

Converting Colors

YIQ(184.8450, 33.9290, -3.6630)

Have a look what the booklet for
YIQ(184.8450, 33.9290, -3.6630)
contains.

YIQ(184.8450, 33.9290, -3.6630)	3
<i>Conversions</i>	4
<i>Details</i>	6
<i>Harmonies</i>	12
<i>Previews</i>	24
<i>Color Blindness Simulation</i>	28
<i>CSS Examples</i>	31

Color

**YIQ(184.8450, 33.9290,
-3.6630)**

Conversions

Conversions Part 1

Format	Color
Hex	D7B28D
RGB	215, 178, 141
RGB Percent	84%, 70%, 55%
CMY	0.1568, 0.3020, 0.4469
CMYK	0.00, 0.17, 0.34, 0.16
HSL	30°, 48%, 70%
HSV	30°, 34%, 84%
XYZ	48.7573, 48.2085, 31.9509
YIQ	184.8450, 33.9290, -3.6630

Conversions

Conversions Part 2

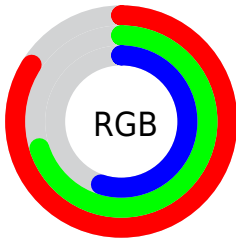
Format	Color
R_{YB}	215, 215, 141
Decimal	14135949
CIE Lab	74.96, 8.20, 23.92
CIE LCh	75, 25.285, 71.070
Yxy	48.2085, 0.3782, 0.3740
Android (android.graphics.Color)	4292326029 (0xFFD7B28D)
YUV	184.8450, -21.6156, 26.4459
Hunter-Lab	69.4323, 3.8411, 21.3189

Details

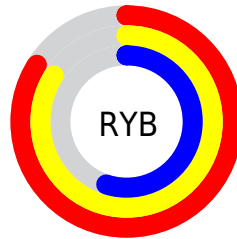
The YIQ color $184.8450, 33.9290, -3.6630$ is a light color, and the websafe version is hex FFCC99 . A complement of this color would be $171.1550, -33.9290, 3.6630$, and the grayscale version is $185.0000, -0.0000, -0.0000$.

A 20% lighter version of the original color is $235.8330, 25.0350, -7.6770$, and $131.2900, 31.1780, -3.3660$ is the 20% darker color. If you saturate the color by 10%, you get $175.9940, 43.6950, -4.4410$, and if you desaturate by 10%, it is $193.8100, 23.8420, -2.5740$.

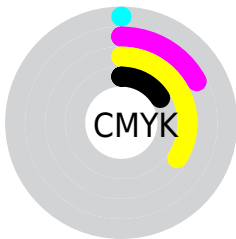
Distribution



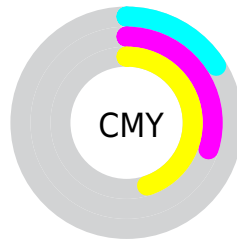
- Red (84%)
- Green (70%)
- Blue (55%)



- Red (84%)
- Yellow (84%)
- Blue (55%)



- Cyan (0%)
- Magenta (17%)
- Yellow (34%)
- Black (16%)



- Cyan (16%)
- Magenta (30%)
- Yellow (45%)

Brightness & Saturation Gradients

These gradients show how the YIQ color 184.8450, 33.9290, -3.6630 changes by changing the brightness by 10 percent. The first figure shows a shift by +10% for each color and the second figure -10%.

Similar to the brightness gradients but the following saturation gradients show a change of the YIQ color 184.8450, 33.9290, -3.6630 by changing the saturation by 10% instead.

■ 184.8450, 33.9290,
-3.6630

■ 184.8450, 33.9290,
-3.6630

255.0000, -0.0000,
-0.0000

■ 157.6600, 33.0120,
-3.5640

■ 235.8330, 25.0350,
-7.6770

■ 131.2900, 31.1780,
-3.3660

■ 251.3520, 10.2720,
-9.9520

■ 105.8060, 29.6650,
-3.4790

■ 254.6580, 0.9630,
-0.9330

■ 81.9090, 27.8770,
-4.1150

■ 58.2400, 25.4470,
-4.1290

■ 35.5280, 24.5760,
-4.8640

■ 16.3240, 16.6430,

1.2430

■ 0.0000, 0.0000,
0.0000

■ 184.8450, 33.9290,
-3.6630

■ 184.8450, 33.9290,
-3.6630

■ 175.9940, 43.6950,
-4.4410

■ 193.8100, 23.8420,
-2.5740

■ 167.0290, 53.7820,
-5.5300

■ 202.6610, 14.0760,
-1.7960

■ 158.7650, 63.2730,
-6.8310

■ 211.0390, 4.2640,
-0.1840

■ 149.8000, 73.3600,
-7.9200

■ 219.8900, -5.5020,
0.5940

■ 140.9490, 83.1260,
-8.6980

■ 228.8550,
-15.5890, 1.6830

■ 131.9840, 93.2130,
-9.7870

■ 235.9960,
-20.5400, -2.2040

■ 127.0940, 98.7150,
-10.3810

■ 241.8660,
-23.2900, -7.4340

■ 243.0400,
-23.8400, -8.4800

Harmonies

Analogous

The Analogous color harmony consists of three colors that are next to each other on the color wheel.



186.5180, 39.7040, 7.3200



184.8450, 33.9290, -3.6630



182.7350, 19.2590, -13.1330

Triad

The Triadic color harmony groups three colors that are evenly spaced from another and form a triangle on the color wheel.



184.8450, 33.9290, -3.6630



174.4070, -44.2870, -17.8790



187.8930, -0.4160, 18.5600

Complementary

The Complementary color scheme is a pair of colors which are on the opposite of each other on the color wheel.



184.8450, 33.9290, -3.6630



171.1550, -33.9290, 3.6630

Split Complementary

Split-complementary colors differ from the complementary color scheme. The scheme consists of three colors, the original color and two neighbors of the complement color.



184.4600, -24.3020, 10.9140



184.8450, 33.9290, -3.6630



175.0290, -51.6700, -10.7260

Square

The Square scheme is like the rectangle color scheme, but the four colors are evenly spaced on the color wheel.



184.8450, 33.9290, -3.6630



177.0640, -24.3880, -20.5800



179.0720, -44.0610, 0.0590



188.9680, 21.3620, 20.3540

Rectangle

The Rectangle color scheme consists of four colors that form a rectangle on the color wheel.



184.8450, 33.9290, -3.6630



180.5700, 6.4220, -17.2740



179.0720, -44.0610, 0.0590



186.5330, -8.2100, 16.6380

Sweetspot

The Sweet Spot groups the original color and five complimentary colors.



184.8450, 33.9290, -3.6630



244.5190, 11.6000, -0.9760



167.4580, 31.9060, 27.5060



121.4800, 7.3360, -0.7920



0.0000, 0.0000, 0.0000



128.0000, -0.0000, -0.0000

Same Dimension

The Same Dimension uses a secret algorithm to generate beautiful new colors.



184.8450, 33.9290, -3.6630



212.5060, 48.0050, -5.4590



205.9770, 24.0290, -22.4910



102.8110, 4.9060, -0.8060



101.0240, 78.5410, -8.2030



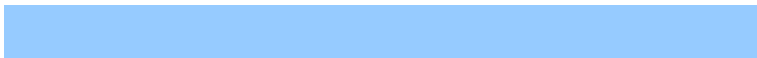
25.7710, 19.5780, -2.3900

Inverse Universe

The Inverse Universe completely reimagines the original color for something new.



171.1550, -33.9290, 3.6630



193.0810, -48.2800, 4.9360



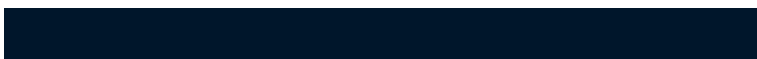
150.0230, -24.0290, 22.4910



100.7760, -5.1810, 0.2830



69.9760, -78.5410, 8.2030



17.8160, -19.8530, 1.8670

Previews

White Background



This preview shows how the YIQ color 184.8450, 33.9290, -3.6630 looks on a white background.

Color Contrast Check

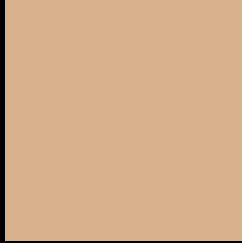
Large Text (above 18pt) WCAG AA × Fail

Any Text WCAG AA × Fail

Large Text (above 18pt) WCAG AAA × Fail

Any Text WCAG AAA × Fail

Black Background



This preview shows how the YIQ color 184.8450, 33.9290, -3.6630 looks on a black background.

Color Contrast Check

Large Text (above 18pt) WCAG AA ✓ Pass

Any Text WCAG AA ✓ Pass

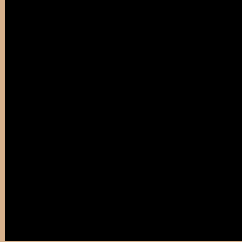
Large Text (above 18pt) WCAG AAA ✓ Pass

Any Text WCAG AAA ✓ Pass

If you want to check with other color combinations, try the [Color Contrast Checker](#).

YIQ 184.8450, 33.9290, -3.6630

Background



This preview shows how black text looks on a background with the YIQ color 184.8450, 33.9290, -3.6630.



This preview shows how white text looks on a background with the YIQ color 184.8450, 33.9290, -3.6630.

-3.6630.

Color Blindness Simulation

Color vision deficiency is a very complex topic, and I could not describe the different causes any better than Wikipedia does, so if you want to learn more, you should check out their [article about color blindness](#).

Dichromacy



Original Color

184.8450, 33.9290, -3.6630

Protanopia

183.3270, 20.5880, -9.6840

Deuteranopia

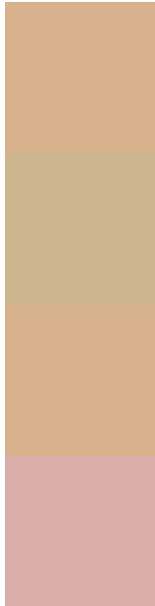
184.8560, 35.3960, -2.7160



Tritanopia

187.8340, 24.4350, 14.2190

Trichromacy



Original Color

184.8450, 33.9290, -3.6630

Protanomaly

184.1320, 25.6310, -7.4650

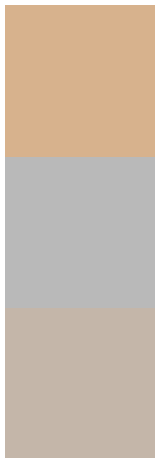
Deuteranomaly

184.5570, 34.8000, -2.9280

Tritanomaly

186.5860, 27.8290, 7.7730

Monochromacy



Original Color

184.8450, 33.9290, -3.6630

Achromatopsia

185.0000, -0.0000, -0.0000

Achromatomaly

184.7040, 12.5170, -1.0750

CSS Examples

Text

The CSS property to change the color of the text to YIQ 184.8450, 33.9290, -3.6630 is called "color". The color property can be set on classes, ids or directly on the HTML element.

This example shows how text in the color `rgb(215, 178, 141)` looks like.

```
.text, #text, p{  
    color:rgb(215, 178, 141)  
}
```

If you want to add a text shadow in that color use the text-shadow property, you can generate a text shadow directly with our [CSS Text Shadow Generator](#).

Here you see how black text with a 4 pixel rgb(215, 178, 141) colored shadow looks like.

```
.shadow{ text-shadow: 4px 4px 2px rgb(215, 178, 141) }
```

Border

The CSS property to change the border of an element to YIQ 184.8450, 33.9290, -3.6630 is called "border". The border property can be set on classes, ids or directly on the HTML element.

This example shows the color as border, it can be applied via the CSS property "border" or "border-color".

```
.border, #border, table{ border:4px solid rgb(215, 178, 141) }
```


If only the border color should be changed use the property `border-color`.

```
.border{ border-color:rgb(215, 178, 141) }
```

If you want to add a box shadow in that color use:

Here you see how a box with a 4 pixel `rgb(215, 178, 141)` colored shadow looks like.

```
.boxshadow{ -moz-box-shadow:4px 4px 4px  
4px rgb(215, 178, 141); -webkit-box-  
shadow:4px 4px 4px 4px rgb(215, 178, 141);  
box-shadow:4px 4px 4px 4px rgb(215, 178,  
141) }
```

Background

The CSS property to change the background color of an element to YIQ 184.8450, 33.9290, -3.6630 is called "background". The background property can be set on classes, ids or directly on the HTML element.

```
.background, #background, body{  
background: rgb(215, 178, 141) }
```

If only the background color should be changed can be used:

```
.background{ background-color: rgb(215,  
178, 141) }
```

This example shows the color as background, it is applied via the CSS property "background".

To optimize and compress your CSS code, you can use our [online CSS compressor and optimizer](#) based on csstidy. If you want to create a linear or radial gradient as background or border, check our [CSS Gradient Generator](#).

Hey! You found this booklet interesting? Support Converting Colors with the new Membership Option!

The pro membership hides all ads, plus gives you double the colors in the color bucket, and more awesome pro features!

[Learn more, Memberships starting at \\$2.50/m!](#)

**Follow me
on Twitter!**

@ConvertingColor