

Converting Colors

YIQ(185.0910, 24.8490, 6.7130)

Have a look what the booklet for
YIQ(185.0910, 24.8490, 6.7130)
contains.

YIQ(185.0910, 24.8490, 6.7130)	3
<i>Conversions</i>	4
<i>Details</i>	6
<i>Harmonies</i>	12
<i>Previews</i>	24
<i>Color Blindness Simulation</i>	28
<i>CSS Examples</i>	31

Color

**YIQ(185.0910, 24.8490,
6.7130)**

Conversions

Conversions Part 1

Format	Color
Hex	D5AEA9
RGB	213, 174, 169
RGB Percent	84%, 68%, 66%
CMY	0.1646, 0.3177, 0.3371
CMYK	0.00, 0.18, 0.21, 0.16
HSL	7°, 34%, 75%
HSV	7°, 21%, 84%
XYZ	49.7440, 47.2809, 44.0533
YIQ	185.0910, 24.8490, 6.7130

Conversions

Conversions Part 2

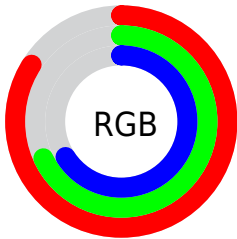
Format	Color
R_{YB}	213, 175, 169
Decimal	14003881
CIE _{Lab}	74.37, 13.42, 7.89
CIE _{LCh}	74, 15.561, 30.447
Yxy	47.2809, 0.3526, 0.3351
Android (android.graphics.Color)	4292193961 (0xFFD5AEA9)
YUV	185.0910, -7.9329, 24.4762
Hunter-Lab	68.7611, 8.8007, 10.1473

Details

The YIQ color **185.0910, 24.8490, 6.7130** is a light color, and the websafe version is hex **CC9999**. A complement of this color would be **196.9090, -24.8490, -6.7130**, and the grayscale version is **185.0000, -0.0000, -0.0000**.

A 20% lighter version of the original color is **236.7910, 16.8260, 3.4340**, and **132.1940, 23.0610, 6.0770** is the 20% darker color. If you saturate the color by 10%, you get **171.5440, 36.8150, 10.1190**, and if you desaturate by 10%, it is **198.6380, 12.8830, 3.3070**.

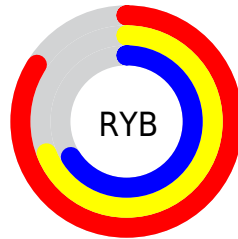
Distribution



Red (84%)

Green (68%)

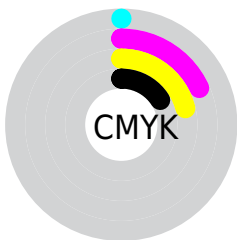
Blue (66%)



Red (84%)

Yellow (69%)

Blue (66%)

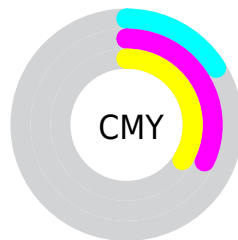


Cyan (0%)

Magenta (18%)

Yellow (21%)

Black (16%)



Cyan (16%)

Magenta (32%)

Yellow (34%)

Brightness & Saturation Gradients

These gradients show how the YIQ color 185.0910, 24.8490, 6.7130 changes by changing the brightness by 10 percent. The first figure shows a shift by +10% for each color and the second figure -10%.

Similar to the brightness gradients but the following saturation gradients show a change of the YIQ color 185.0910, 24.8490, 6.7130 by changing the saturation by 10% instead.

■ 185.0910, 24.8490,
6.7130

■ 185.0910, 24.8490,
6.7130

255.0000, -0.0000,
-0.0000

■ 157.9060, 23.9320,
6.8120

■ 236.7910, 16.8260,
3.4340

■ 132.1940, 23.0610,
6.0770

254.7720, 0.6420,
-0.6220

■ 106.5960, 21.8690,
5.6530

■ 82.1120, 20.3560,
5.5400

■ 58.9270, 19.4390,
5.6390

■ 37.0300, 17.6510,
5.0030

■ 13.9980, 20.6770,

5.2290

■ 0.0000, 0.0000,
0.0000

■ 185.0910, 24.8490,
6.7130

■ 185.0910, 24.8490,
6.7130

■ 171.5440, 36.8150,
10.1190

■ 198.6380, 12.8830,
3.3070

■ 157.8830, 49.1020,
13.2140

■ 212.2990, 0.5960,
0.2120

■ 144.3360, 61.0680,
16.6200

■ 225.8460,
-11.3700, -3.1940

■ 130.7890, 73.0340,
20.0260

■ 239.3930,
-23.3360, -6.6000

■ 117.2420, 85.0000,
23.4320

■ 242.4420,
-25.0320, -8.9040

■ 104.1680, 97.0120,
26.0040

■ 90.6210, 108.9780,
29.4100

■ 77.7750, 120.3480,
32.6040

Harmonies

Analogous

The Analogous color harmony consists of three colors that are next to each other on the color wheel.



185.8010, 20.0340, 11.3780



185.0910, 24.8490, 6.7130



183.9180, 23.6580, 0.7620

Triad

The Triadic color harmony groups three colors that are evenly spaced from another and form a triangle on the color wheel.



185.0910, 24.8490, 6.7130



179.1200, -9.6260, -12.7780



182.2940, -18.2030, 5.0050

Complementary

The Complementary color scheme is a pair of colors which are on the opposite of each other on the color wheel.



185.0910, 24.8490, 6.7130



196.9090, -24.8490, -6.7130

Split Complementary

Split-complementary colors differ from the complementary color scheme. The scheme consists of three colors, the original color and two neighbors of the complement color.



179.4020, -27.5550, -1.7230



185.0910, 24.8490, 6.7130



177.8290, -21.8680, -11.1800

Square

The Square scheme is like the rectangle color scheme, but the four colors are evenly spaced on the color wheel.



185.0910, 24.8490, 6.7130



180.4160, 4.2200, -10.4040



178.2290, -28.7460, -7.6740



184.2850, -4.8160, 10.1920

Rectangle

The Rectangle color scheme consists of four colors that form a rectangle on the color wheel.



185.0910, 24.8490, 6.7130



182.8310, 19.3490, -3.7470



178.2290, -28.7460, -7.6740



181.6740, -22.3290, 2.6870

Sweetspot

The Sweet Spot groups the original color and five complimentary colors.



185.0910, 24.8490, 6.7130



245.0720, 8.6650, 2.6570



186.7160, 13.3840, 21.7680



122.2780, 5.0890, 1.3850



0.0000, 0.0000, 0.0000



128.0000, -0.0000, -0.0000

Same Dimension

The Same Dimension uses a secret algorithm to generate beautiful new colors.



185.0910, 24.8490, 6.7130



214.2450, 36.2190, 9.9070



197.4180, 19.0740, -4.2700



100.4630, 6.0060, 1.2860



62.2820, 96.6910, 26.3150



15.7920, 24.2530, 6.5010

Inverse Universe

The Inverse Universe completely reimagines the original color for something new.



196.9090, -24.8490, -6.7130



231.7550, -36.2190, -9.9070



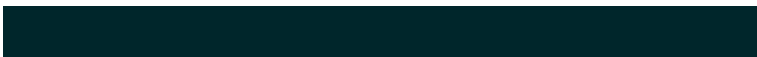
184.5820, -19.0740, 4.2700



103.1240, -6.2810, -1.8090



108.7180, -96.6910, -26.3150



27.2080, -24.2530, -6.5010

Previews

White Background



This preview shows how the YIQ color 185.0910, 24.8490, 6.7130 looks on a white background.

Color Contrast Check

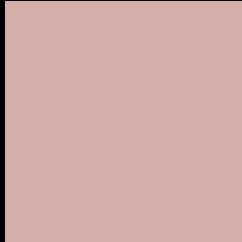
Large Text (above 18pt) WCAG AA × Fail

Any Text WCAG AA × Fail

Large Text (above 18pt) WCAG AAA × Fail

Any Text WCAG AAA × Fail

Black Background



This preview shows how the YIQ color 185.0910, 24.8490, 6.7130 looks on a black background.

Color Contrast Check

Large Text (above 18pt) WCAG AA ✓ Pass

Any Text WCAG AA ✓ Pass

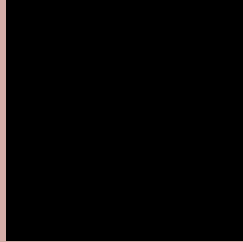
Large Text (above 18pt) WCAG AAA ✓ Pass

Any Text WCAG AAA ✓ Pass

If you want to check with other color combinations, try the [Color Contrast Checker](#).

YIQ 185.0910, 24.8490, 6.7130

Background



This preview shows how black text looks on a background with the YIQ color 185.0910, 24.8490, 6.7130.



This preview shows how white text looks on a background with the YIQ color 185.0910, 24.8490,

Color Blindness Simulation

Color vision deficiency is a very complex topic, and I could not describe the different causes any better than Wikipedia does, so if you want to learn more, you should check out their [article about color blindness](#).

Dichromacy



Original Color

185.0910, 24.8490, 6.7130

Protanopia

183.1810, 6.7400, -1.0040

Deuteranopia

184.7590, 19.8520, 3.6600



Tritanopia

186.3390, 21.4550, 13.1590

Trichromacy



Original Color

185.0910, 24.8490, 6.7130

Protanomaly

183.8830, 13.5710, 1.8510

Deuteranomaly

185.0690, 21.9150, 4.8190

Tritanomaly

185.9430, 22.5100, 10.5580

Monochromacy



Original Color

185.0910, 24.8490, 6.7130

Achromatopsia

185.0000, -0.0000, -0.0000

Achromatomaly

184.9580, 8.9860, 2.3460

CSS Examples

Text

The CSS property to change the color of the text to YIQ 185.0910, 24.8490, 6.7130 is called "color". The color property can be set on classes, ids or directly on the HTML element.

This example shows how text in the color `rgb(213, 174, 169)` looks like.

```
.text, #text, p{  
    color:rgb(213, 174, 169)  
}
```

If you want to add a text shadow in that color use the text-shadow property, you can generate a text shadow directly with our [CSS Text Shadow Generator](#).

Here you see how black text with a 4 pixel rgb(213, 174, 169) colored shadow looks like.

```
.shadow{ text-shadow: 4px 4px 2px rgb(213, 174, 169) }
```

Border

The CSS property to change the border of an element to YIQ 185.0910, 24.8490, 6.7130 is called "border". The border property can be set on classes, ids or directly on the HTML element.

This example shows the color as border, it can be applied via the CSS property "border" or "border-color".

```
.border, #border, table{ border:4px solid rgb(213, 174, 169) }
```


If only the border color should be changed use the property `border-color`.

```
.border{ border-color:rgb(213, 174, 169) }
```

If you want to add a box shadow in that color use:

Here you see how a box with a 4 pixel `rgb(213, 174, 169)` colored shadow looks like.

```
.boxshadow{ -moz-box-shadow:4px 4px 4px  
4px rgb(213, 174, 169); -webkit-box-  
shadow:4px 4px 4px 4px rgb(213, 174, 169);  
box-shadow:4px 4px 4px 4px rgb(213, 174,  
169) }
```

Background

The CSS property to change the background color of an element to YIQ 185.0910, 24.8490, 6.7130 is called "background". The background property can be set on classes, ids or directly on the HTML element.

```
.background, #background, body{  
background: rgb(213, 174, 169) }
```

If only the background color should be changed can be used:

```
.background{ background-color: rgb(213,  
174, 169) }
```

This example shows the color as background, it is applied via the CSS property "background".

To optimize and compress your CSS code, you can use our [online CSS compressor and optimizer](#) based on csstidy. If you want to create a linear or radial gradient as background or border, check our [CSS Gradient Generator](#).

Hey! You found this booklet interesting? Support Converting Colors with the new Membership Option!

The pro membership hides all ads, plus gives you double the colors in the color bucket, and more awesome pro features!

[Learn more, Memberships starting at \\$2.50/m!](#)

**Follow me
on Twitter!**

@ConvertingColor