

Converting Colors

YIQ(185.3090, 30.1670, 9.4550)

Have a look what the booklet for
YIQ(185.3090, 30.1670, 9.4550)
contains.

YIQ(185.3090, 30.1670, 9.4550)	3
<i>Conversions</i>	4
<i>Details</i>	6
<i>Harmonies</i>	12
<i>Previews</i>	24
<i>Color Blindness Simulation</i>	28
<i>CSS Examples</i>	31

Color

**YIQ(185.3090, 30.1670,
9.4550)**

Conversions

Conversions Part 1

Format	Color
Hex	DCABA8
RGB	220, 171, 168
RGB Percent	86%, 67%, 66%
CMY	0.1371, 0.3295, 0.3410
CMYK	0.00, 0.22, 0.24, 0.14
HSL	3°, 43%, 76%
HSV	3°, 24%, 86%
XYZ	51.1539, 47.1666, 43.4689
YIQ	185.3090, 30.1670, 9.4550

Conversions

Conversions Part 2

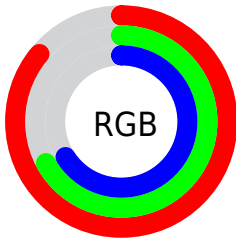
Format	Color
R_{YB}	220, 171, 168
Decimal	14461864
CIE Lab	74.30, 17.50, 8.42
CIE LCh	74, 19.420, 25.685
Yxy	47.1666, 0.3608, 0.3327
Android (android.graphics.Color)	4292651944 (0xFFDCABA8)
YUV	185.3090, -8.5333, 30.4240
Hunter-Lab	68.6779, 12.7671, 10.5476

Details

The YIQ color **185.3090, 30.1670, 9.4550** is a light color, and the websafe version is hex **CC9999**. A complement of this color would be **202.6910, -30.1670, -9.4550**, and the grayscale version is **185.0000, -0.0000, -0.0000**.

A 20% lighter version of the original color is **234.3290, 18.2470, 5.2150**, and **132.1130, 27.7830, 8.6070** is the 20% darker color. If you saturate the color by 10%, you get **170.4740, 43.0040, 13.5960**, and if you desaturate by 10%, it is **200.1440, 17.3300, 5.3140**.

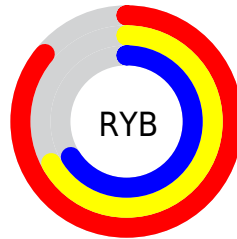
Distribution



Red (86%)

Green (67%)

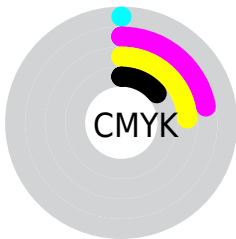
Blue (66%)



Red (86%)

Yellow (67%)

Blue (66%)

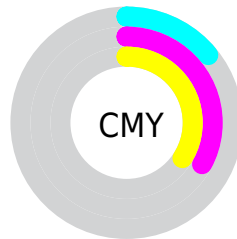


Cyan (0%)

Magenta (22%)

Yellow (24%)

Black (14%)



Cyan (14%)

Magenta (33%)

Yellow (34%)

Brightness & Saturation Gradients

These gradients show how the YIQ color 185.3090, 30.1670, 9.4550 changes by changing the brightness by 10 percent. The first figure shows a shift by +10% for each color and the second figure -10%.

Similar to the brightness gradients but the following saturation gradients show a change of the YIQ color 185.3090, 30.1670, 9.4550 by changing the saturation by 10% instead.

■ 185.3090, 30.1670,
9.4550

■ 185.3090, 30.1670,
9.4550

■ 255.0000, -0.0000,
-0.0000

■ 158.1240, 29.2500,
9.5540

■ 234.3290, 18.2470,
5.2150

■ 132.1130, 27.7830,
8.6070

■ 254.6580, 0.9630,
-0.9330

■ 106.6290, 26.2700,
8.4940

■ 82.0310, 25.0780,
8.0700

■ 58.5470, 23.5650,
7.9570

■ 35.7640, 21.4560,
7.6320

■ 12.5470, 23.5650,

7.9570

■ 0.0000, 0.0000,
0.0000

■ 185.3090, 30.1670,
9.4550

■ 185.3090, 30.1670,
9.4550

■ 170.4740, 43.0040,
13.5960

■ 200.1440, 17.3300,
5.3140

■ 155.6390, 55.8410,
17.7370

■ 214.3920, 4.7680,
1.6960

■ 141.3910, 68.4030,
21.3550

■ 229.2270, -8.0690,
-2.4450

■ 126.5560, 81.2400,
25.4960

■ 243.9480,
-20.5850, -6.8970

■ 111.7210, 94.0770,
29.6370

■ 244.5350,
-20.8600, -7.4200

■ 96.8860, 106.9140,
33.7780

■ 82.6380, 119.4760,
37.3960

■ 72.8240, 127.8200,
40.3640

Harmonies

Analogous

The Analogous color harmony consists of three colors that are next to each other on the color wheel.



185.8770, 22.8760, 14.9400



185.3090, 30.1670, 9.4550



184.2670, 29.9850, 1.7370

Triad

The Triadic color harmony groups three colors that are evenly spaced from another and form a triangle on the color wheel.



185.3090, 30.1670, 9.4550



178.4250, -9.1670, -15.5910



180.9880, -26.0890, 4.7510

Complementary

The Complementary color scheme is a pair of colors which are on the opposite of each other on the color wheel.



185.3090, 30.1670, 9.4550



202.6910, -30.1670, -9.4550

Split Complementary

Split-complementary colors differ from the complementary color scheme. The scheme consists of three colors, the original color and two neighbors of the complement color.



177.8570, -36.2660, -3.5460



185.3090, 30.1670, 9.4550



176.1550, -25.9020, -15.1660

Square

The Square scheme is like the rectangle color scheme, but the four colors are evenly spaced on the color wheel.



185.3090, 30.1670, 9.4550



180.1020, 7.9800, -12.4680



176.1140, -35.8520, -11.0520



184.3000, -9.1720, 12.0440

Rectangle

The Rectangle color scheme consists of four colors that form a rectangle on the color wheel.



185.3090, 30.1670, 9.4550



183.3540, 25.1260, -3.8180



176.1140, -35.8520, -11.0520



179.9550, -30.4900, 1.9100

Sweetspot

The Sweet Spot groups the original color and five complimentary colors.



185.3090, 30.1670, 9.4550



242.9690, 10.4530, 3.2930



189.1340, 15.2630, 26.2630



120.8760, 6.2810, 1.8090



0.0000, 0.0000, 0.0000



128.0000, -0.0000, -0.0000

Same Dimension

The Same Dimension uses a secret algorithm to generate beautiful new colors.



185.3090, 30.1670, 9.4550



207.5770, 41.2160, 12.9600



200.5710, 23.0170, -4.1430



102.2890, 6.5560, 2.3320



57.5970, 100.3580, 31.4460



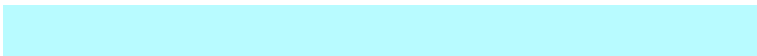
15.5150, 26.5910, 8.1830

Inverse Universe

The Inverse Universe completely reimagines the original color for something new.



202.6910, -30.1670, -9.4550



231.4230, -41.2160, -12.9600



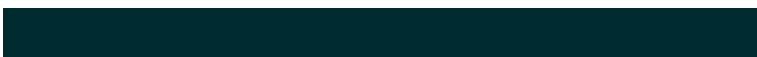
187.4290, -23.0170, 4.1430



106.1240, -6.2810, -1.8090



115.9900, -100.6330, -31.9690



30.4850, -26.5910, -8.1830

Previews

White Background



This preview shows how the YIQ color 185.3090, 30.1670, 9.4550 looks on a white background.

Color Contrast Check

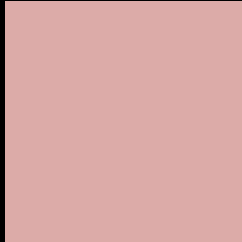
Large Text (above 18pt) WCAG AA × Fail

Any Text WCAG AA × Fail

Large Text (above 18pt) WCAG AAA × Fail

Any Text WCAG AAA × Fail

Black Background



This preview shows how the YIQ color 185.3090, 30.1670, 9.4550 looks on a black background.

Color Contrast Check

Large Text (above 18pt) WCAG AA ✓ Pass

Any Text WCAG AA ✓ Pass

Large Text (above 18pt) WCAG AAA ✓ Pass

Any Text WCAG AAA ✓ Pass

If you want to check with other color combinations, try the [Color Contrast Checker](#).

YIQ 185.3090, 30.1670, 9.4550

Background



This preview shows how black text looks on a background with the YIQ color 185.3090, 30.1670, 9.4550.



This preview shows how white text looks on a background with the YIQ color 185.3090, 30.1670,

9.4550.

Color Blindness Simulation

Color vision deficiency is a very complex topic, and I could not describe the different causes any better than Wikipedia does, so if you want to learn more, you should check out their [article about color blindness](#).

Dichromacy



Original Color

185.3090, 30.1670, 9.4550

Protanopia

182.8820, 6.1440, -1.2160

Deuteranopia

184.2430, 21.3650, 3.7730



Tritanopia

186.3290, 27.4150, 15.2790

Trichromacy



Original Color

185.3090, 30.1670, 9.4550

Protanomaly

183.8940, 15.0380, 2.7980

Deuteranomaly

184.5640, 24.8950, 5.8790

Tritanomaly

186.0470, 28.1490, 12.9890

Monochromacy



Original Color

185.3090, 30.1670, 9.4550

Achromatopsia

185.0000, -0.0000, -0.0000

Achromatomaly

185.2680, 11.0490, 3.5050

CSS Examples

Text

The CSS property to change the color of the text to YIQ 185.3090, 30.1670, 9.4550 is called "color". The color property can be set on classes, ids or directly on the HTML element.

This example shows how text in the color `rgb(220, 171, 168)` looks like.

```
.text, #text, p{  
    color:rgb(220, 171, 168)  
}
```

If you want to add a text shadow in that color use the text-shadow property, you can generate a text shadow directly with our [CSS Text Shadow Generator](#).

Here you see how black text with a 4 pixel rgb(220, 171, 168) colored shadow looks like.

```
.shadow{ text-shadow: 4px 4px 2px rgb(220, 171, 168) }
```

Border

The CSS property to change the border of an element to YIQ 185.3090, 30.1670, 9.4550 is called "border". The border property can be set on classes, ids or directly on the HTML element.

This example shows the color as border, it can be applied via the CSS property "border" or "border-color".

```
.border, #border, table{ border:4px solid rgb(220, 171, 168) }
```


If only the border color should be changed use the property `border-color`.

```
.border{ border-color:rgb(220, 171, 168) }
```

If you want to add a box shadow in that color use:

Here you see how a box with a 4 pixel `rgb(220, 171, 168)` colored shadow looks like.

```
.boxshadow{ -moz-box-shadow:4px 4px 4px  
4px rgb(220, 171, 168); -webkit-box-  
shadow:4px 4px 4px 4px rgb(220, 171, 168);  
box-shadow:4px 4px 4px 4px rgb(220, 171,  
168) }
```

Background

The CSS property to change the background color of an element to YIQ 185.3090, 30.1670, 9.4550 is called "background". The background property can be set on classes, ids or directly on the HTML element.

```
.background, #background, body{  
background: rgb(220, 171, 168) }
```

If only the background color should be changed can be used:

```
.background{ background-color: rgb(220,  
171, 168) }
```

This example shows the color as background, it is applied via the CSS property "background".

To optimize and compress your CSS code, you can use our [online CSS compressor and optimizer](#) based on csstidy. If you want to create a linear or radial gradient as background or border, check our [CSS Gradient Generator](#).

Hey! You found this booklet interesting? Support Converting Colors with the new Membership Option!

The pro membership hides all ads, plus gives you double the colors in the color bucket, and more awesome pro features!

[Learn more, Memberships starting at \\$2.50/m!](#)

**Follow me
on Twitter!**

@ConvertingColor