

Converting Colors

YIQ(185.3180, 16.7800, 4.2680)

Have a look what the booklet for
YIQ(185.3180, 16.7800, 4.2680)
contains.

YIQ(185.3180, 16.7800, 4.2680)	3
<i>Conversions</i>	4
<i>Details</i>	6
<i>Harmonies</i>	12
<i>Previews</i>	24
<i>Color Blindness Simulation</i>	28
<i>CSS Examples</i>	31

Color

**YIQ(185.3180, 16.7800,
4.2680)**

Conversions

Conversions Part 1

Format	Color
Hex	CCB2AE
RGB	204, 178, 174
RGB Percent	80%, 70%, 68%
CMY	0.1999, 0.3020, 0.3176
CMYK	0.00, 0.13, 0.15, 0.20
HSL	8°, 23%, 74%
HSV	8°, 15%, 80%
XYZ	48.4659, 47.7326, 46.7124
YIQ	185.3180, 16.7800, 4.2680

Conversions

Conversions Part 2

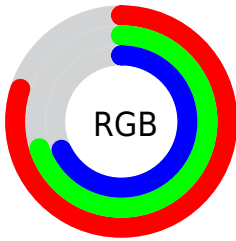
Format	Color
R _Y B	204, 179, 174
Decimal	13415086
CIE Lab	74.66, 8.70, 5.46
CIE LCh	75, 10.271, 32.128
Yxy	47.7326, 0.3391, 0.3340
Android (android.graphics.Color)	4291605166 (0xFFCCB2AE)
YUV	185.3180, -5.5798, 16.3841
Hunter-Lab	69.0888, 4.3127, 8.2750

Details

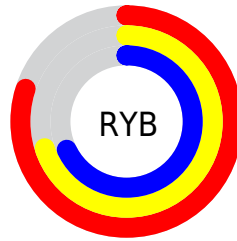
The YIQ color **185.3180, 16.7800, 4.2680** is a light color, and the websafe version is hex **CC9999**. A complement of this color would be **192.6820, -16.7800, -4.2680**, and the grayscale version is **185.0000, -0.0000, -0.0000**.

A 20% lighter version of the original color is **239.7090, 14.1210, 2.8970**, and **132.1330, 15.8630, 4.3670** is the 20% darker color. If you saturate the color by 10%, you get **172.4720, 28.1500, 7.4620**, and if you desaturate by 10%, it is **198.1640, 5.4100, 1.0740**.

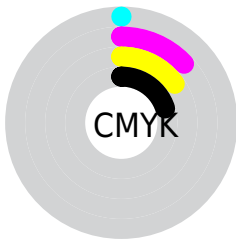
Distribution



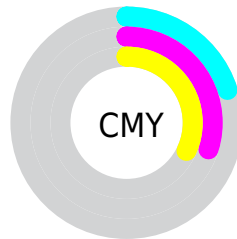
- Red (80%)
- Green (70%)
- Blue (68%)



- Red (80%)
- Yellow (70%)
- Blue (68%)



- Cyan (0%)
- Magenta (13%)
- Yellow (15%)
- Black (20%)



- Cyan (20%)
- Magenta (30%)
- Yellow (32%)

Brightness & Saturation Gradients

These gradients show how the YIQ color 185.3180, 16.7800, 4.2680 changes by changing the brightness by 10 percent. The first figure shows a shift by +10% for each color and the second figure -10%.

Similar to the brightness gradients but the following saturation gradients show a change of the YIQ color 185.3180, 16.7800, 4.2680 by changing the saturation by 10% instead.

■ 185.3180, 16.7800,
4.2680

■ 185.3180, 16.7800,
4.2680

255.0000, -0.0000,
-0.0000

■ 158.0190, 16.1840,
4.0560

■ 239.7090, 14.1210,
2.8970

■ 132.1330, 15.8630,
4.3670

■ 106.8340, 15.2670,
4.1550

■ 82.2360, 14.0750,
3.7310

■ 59.6380, 12.8830,
3.3070

■ 37.4530, 11.9660,
3.4060

■ 15.5950, 14.4420,

2.5860

0.0000, 0.0000,
0.0000

185.3180, 16.7800,
4.2680

185.3180, 16.7800,
4.2680

172.4720, 28.1500,
7.4620

198.1640, 5.4100,
1.0740

160.0990, 39.5660,
9.8220

210.5370, -6.0060,
-1.2860

147.2530, 50.9360,
13.0160

223.3830,
-17.3760, -4.4800

134.2930, 62.6270,
15.8990

236.2290,
-28.7460, -7.6740

122.0340, 73.7220,
18.5700

239.7510,
-30.3960, -10.8120

■ 109.1880, 85.0920,
21.7640

■ 96.2280, 96.7830,
24.6470

■ 83.3820, 108.1530,
27.8410

■ 76.8450, 114.1590,
29.1270

Harmonies

Analogous

The Analogous color harmony consists of three colors that are next to each other on the color wheel.



185.4580, 13.5700, 7.3780



185.3180, 16.7800, 4.2680



184.4980, 16.0930, 0.1970

Triad

The Triadic color harmony groups three colors that are evenly spaced from another and form a triangle on the color wheel.



185.3180, 16.7800, 4.2680



181.1360, -6.5550, -7.8590



183.3610, -11.1420, 3.6900

Complementary

The Complementary color scheme is a pair of colors which are on the opposite of each other on the color wheel.



185.3180, 16.7800, 4.2680



192.6820, -16.7800, -4.2680

Split Complementary

Split-complementary colors differ from the complementary color scheme. The scheme consists of three colors, the original color and two neighbors of the complement color.



181.9040, -17.2850, -0.6210



185.3180, 16.7800, 4.2680



180.3570, -14.4870, -7.2790

Square

The Square scheme is like the rectangle color scheme, but the four colors are evenly spaced on the color wheel.



185.3180, 16.7800, 4.2680



182.1540, 2.2020, -6.8700



180.7850, -18.5680, -4.9040



184.9600, -2.5230, 7.1810

Rectangle

The Rectangle color scheme consists of four colors that form a rectangle on the color wheel.



185.3180, 16.7800, 4.2680



183.6500, 12.6090, -2.7430



180.7850, -18.5680, -4.9040



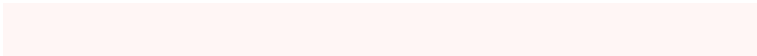
182.7520, -13.8010, 2.3190

Sweetspot

The Sweet Spot groups the original color and five complimentary colors.



185.3180, 16.7800, 4.2680



248.5770, 5.6850, 1.5970



186.0480, 9.2130, 14.7570



123.6800, 3.8970, 0.9610



0.0000, 0.0000, 0.0000



128.0000, -0.0000, -0.0000

Same Dimension

The Same Dimension uses a secret algorithm to generate beautiful new colors.



185.3180, 16.7800, 4.2680



226.2760, 25.7660, 6.6140



194.1230, 12.6550, -3.5770



95.5770, 5.6850, 1.5970



62.5480, 92.8860, 23.6860



14.2970, 21.2730, 5.4410

Inverse Universe

The Inverse Universe completely reimagines the original color for something new.



192.6820, -16.7800, -4.2680



237.7240, -25.7660, -6.6140



184.4640, -12.9300, 3.0540



98.4230, -5.6850, -1.5970



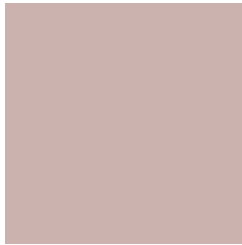
103.4520, -92.8860, -23.6860



23.7030, -21.2730, -5.4410

Previews

White Background



This preview shows how the YIQ color 185.3180, 16.7800, 4.2680 looks on a white background.

Color Contrast Check

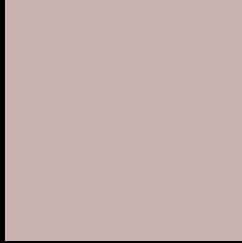
Large Text (above 18pt) WCAG AA × Fail

Any Text WCAG AA × Fail

Large Text (above 18pt) WCAG AAA × Fail

Any Text WCAG AAA × Fail

Black Background



This preview shows how the YIQ color 185.3180, 16.7800, 4.2680 looks on a black background.

Color Contrast Check

Large Text (above 18pt) WCAG AA ✓ Pass

Any Text WCAG AA ✓ Pass

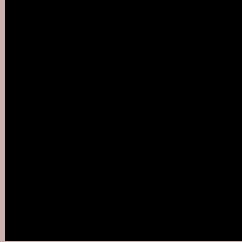
Large Text (above 18pt) WCAG AAA ✓ Pass

Any Text WCAG AAA ✓ Pass

If you want to check with other color combinations, try the [Color Contrast Checker](#).

YIQ 185.3180, 16.7800, 4.2680

Background



This preview shows how black text looks on a background with the YIQ color 185.3180, 16.7800, 4.2680.



This preview shows how white text looks on a background with the YIQ color 185.3180, 16.7800,

4.2680.

Color Blindness Simulation

Color vision deficiency is a very complex topic, and I could not describe the different causes any better than Wikipedia does, so if you want to learn more, you should check out their [article about color blindness](#).

Dichromacy



Original Color

185.3180, 16.7800, 4.2680

Protanopia

184.1100, 5.5020, -0.5940

Deuteranopia

185.6170, 17.3760, 4.4800



Tritanopia

186.4520, 13.7070, 10.4030

Trichromacy



Original Color

185.3180, 16.7800, 4.2680

Protanomaly

184.3170, 9.3530, 1.2010

Deuteranomaly

185.6170, 17.3760, 4.4800

Tritanomaly

186.1700, 14.4410, 8.1130

Monochromacy



Original Color

185.3180, 16.7800, 4.2680

Achromatopsia

185.0000, -0.0000, -0.0000

Achromatomaly

184.8760, 6.2810, 1.8090

CSS Examples

Text

The CSS property to change the color of the text to YIQ 185.3180, 16.7800, 4.2680 is called "color". The color property can be set on classes, ids or directly on the HTML element.

This example shows how text in the color `rgb(204, 178, 174)` looks like.

```
.text, #text, p{  
    color:rgb(204, 178, 174)  
}
```

If you want to add a text shadow in that color use the text-shadow property, you can generate a text shadow directly with our [CSS Text Shadow Generator](#).

Here you see how black text with a 4 pixel rgb(204, 178, 174) colored shadow looks like.

```
.shadow{ text-shadow: 4px 4px 2px rgb(204, 178, 174) }
```

Border

The CSS property to change the border of an element to YIQ 185.3180, 16.7800, 4.2680 is called "border". The border property can be set on classes, ids or directly on the HTML element.

This example shows the color as border, it can be applied via the CSS property "border" or "border-color".

```
.border, #border, table{ border:4px solid rgb(204, 178, 174) }
```


If only the border color should be changed use the property `border-color`.

```
.border{ border-color:rgb(204, 178, 174) }
```

If you want to add a box shadow in that color use:

Here you see how a box with a 4 pixel `rgb(204, 178, 174)` colored shadow looks like.

```
.boxshadow{ -moz-box-shadow:4px 4px 4px  
4px rgb(204, 178, 174); -webkit-box-  
shadow:4px 4px 4px 4px rgb(204, 178, 174);  
box-shadow:4px 4px 4px 4px rgb(204, 178,  
174) }
```

Background

The CSS property to change the background color of an element to YIQ 185.3180, 16.7800, 4.2680 is called "background". The background property can be set on classes, ids or directly on the HTML element.

```
.background, #background, body{  
background: rgb(204, 178, 174) }
```

If only the background color should be changed can be used:

```
.background{ background-color: rgb(204,  
178, 174) }
```

This example shows the color as background, it is applied via the CSS property "background".

To optimize and compress your CSS code, you can use our [online CSS compressor and optimizer](#) based on csstidy. If you want to create a linear or radial gradient as background or border, check our [CSS Gradient Generator](#).

Hey! You found this booklet interesting? Support Converting Colors with the new Membership Option!

The pro membership hides all ads, plus gives you double the colors in the color bucket, and more awesome pro features!

[Learn more, Memberships starting at \\$2.50/m!](#)

**Follow me
on Twitter!**

@ConvertingColor