

Converting Colors

YIQ(185.4530, 11.9660, 3.4060)

Have a look what the booklet for
YIQ(185.4530, 11.9660, 3.4060)
contains.

YIQ(185.4530, 11.9660, 3.4060)	3
<i>Conversions</i>	4
<i>Details</i>	6
<i>Harmonies</i>	12
<i>Previews</i>	24
<i>Color Blindness Simulation</i>	28
<i>CSS Examples</i>	31

Color

**YIQ(185.4530, 11.9660,
3.4060)**

Conversions

Conversions Part 1

Format	Color
Hex	C7B4B2
RGB	199, 180, 178
RGB Percent	78%, 71%, 70%
CMY	0.2196, 0.2941, 0.3019
CMYK	0.00, 0.10, 0.11, 0.22
HSL	6°, 16%, 74%
HSV	6°, 11%, 78%
XYZ	47.9129, 47.9978, 48.8653
YIQ	185.4530, 11.9660, 3.4060

Conversions

Conversions Part 2

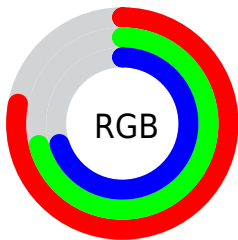
Format	Color
R _Y B	199, 180, 178
Decimal	13087922
CIE Lab	74.82, 6.45, 3.47
CIE LCh	75, 7.324, 28.265
Yxy	47.9978, 0.3309, 0.3315
Android (android.graphics.Color)	4291278002 (0xFFC7B4B2)
YUV	185.4530, -3.6743, 11.8807
Hunter-Lab	69.2804, 2.2062, 6.6775

Details

The YIQ color **185.4530, 11.9660, 3.4060** is a light color, and the websafe version is hex **CCCCCC**. A complement of this color would be **191.5470, -11.9660, -3.4060**, and the grayscale version is **185.0000, -0.0000, -0.0000**.

A 20% lighter version of the original color is **241.4530, 11.9660, 3.4060**, and **132.1540, 11.3700, 3.1940** is the 20% darker color. If you saturate the color by 10%, you get **172.6070, 23.3360, 6.6000**, and if you desaturate by 10%, it is **198.2990, 0.5960, 0.2120**.

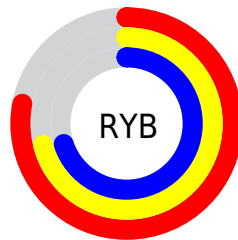
Distribution



Red (78%)

Green (71%)

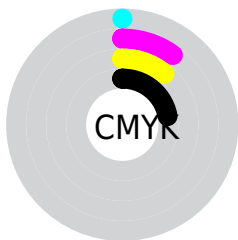
Blue (70%)



Red (78%)

Yellow (71%)

Blue (70%)

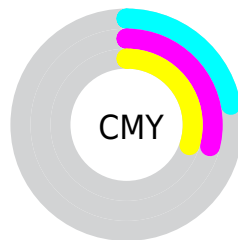


Cyan (0%)

Magenta (10%)

Yellow (11%)

Black (22%)



Cyan (22%)

Magenta (29%)

Yellow (30%)

Brightness & Saturation Gradients

These gradients show how the YIQ color 185.4530, 11.9660, 3.4060 changes by changing the brightness by 10 percent. The first figure shows a shift by +10% for each color and the second figure -10%.

Similar to the brightness gradients but the following saturation gradients show a change of the YIQ color 185.4530, 11.9660, 3.4060 by changing the saturation by 10% instead.

■ 185.4530, 11.9660,
3.4060

■ 185.4530, 11.9660,
3.4060

255.0000, -0.0000,
-0.0000

■ 158.4530, 11.9660,
3.4060

■ 241.4530, 11.9660,
3.4060

■ 132.1540, 11.3700,
3.1940

■ 106.9690, 10.4530,
3.2930

■ 82.6700, 9.8570,
3.0810

■ 59.6700, 9.8570,
3.0810

■ 38.0720, 8.6650,
2.6570

■ 16.4420, 10.4990,

2.4590

0.0000, 0.0000,
0.0000

185.4530, 11.9660,
3.4060

185.4530, 11.9660,
3.4060

172.6070, 23.3360,
6.6000

198.2990, 0.5960,
0.2120

159.7610, 34.7060,
9.7940

211.1450,
-10.7740, -2.9820

146.9150, 46.0760,
12.9880

223.9910,
-22.1440, -6.1760

134.0690, 57.4460,
16.1820

236.4950,
-32.5510, -10.3030

121.3370, 68.4950,
19.6870

238.2560,
-33.3760, -11.8720

■ 108.4910, 79.8650,
22.8810

■ 95.6450, 91.2350,
26.0750

■ 82.7990, 102.6050,
29.2690

■ 70.6540, 113.3790,
32.2510

Harmonies

Analogous

The Analogous color harmony consists of three colors that are next to each other on the color wheel.



185.9520, 9.1230, 5.3710



185.4530, 11.9660, 3.4060



184.5730, 11.5080, 0.6920

Triad

The Triadic color harmony groups three colors that are evenly spaced from another and form a triangle on the color wheel.



185.4530, 11.9660, 3.4060



182.2720, -3.9420, -5.6540



183.9760, -8.6200, 2.0360

Complementary

The Complementary color scheme is a pair of colors which are on the opposite of each other on the color wheel.



185.4530, 11.9660, 3.4060



191.5470, -11.9660, -3.4060

Split Complementary

Split-complementary colors differ from the complementary color scheme. The scheme consists of three colors, the original color and two neighbors of the complement color.



182.8290, -12.7000, -1.1160



185.4530, 11.9660, 3.4060



182.0480, -9.1230, -5.3710

Square

The Square scheme is like the rectangle color scheme, but the four colors are evenly spaced on the color wheel.



185.4530, 11.9660, 3.4060



183.5070, 2.7060, -4.9900



182.2480, -12.5620, -3.6180



185.0800, -2.9810, 4.4670

Rectangle

The Rectangle color scheme consists of four colors that form a rectangle on the color wheel.



185.4530, 11.9660, 3.4060



184.6220, 9.8120, -1.6120



182.2480, -12.5620, -3.6180



183.6660, -10.6830, 0.8770

Sweetspot

The Sweet Spot groups the original color and five complimentary colors.



185.4530, 11.9660, 3.4060



249.9790, 4.4930, 1.1730



186.4450, 6.4170, 10.3610



124.3810, 3.3010, 0.7490



0.0000, 0.0000, 0.0000



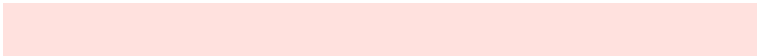
128.0000, -0.0000, -0.0000

Same Dimension

The Same Dimension uses a secret algorithm to generate beautiful new colors.



185.4530, 11.9660, 3.4060



233.6280, 18.8430, 5.4270



191.3230, 9.2160, -1.8240



92.6910, 5.3640, 1.9080



57.5420, 93.0230, 26.7110



12.5250, 20.6310, 6.0630

Inverse Universe

The Inverse Universe completely reimagines the original color for something new.



191.5470, -11.9660, -3.4060



243.3720, -18.8430, -5.4270



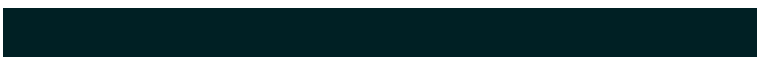
185.6770, -9.2160, 1.8240



96.3090, -5.3640, -1.9080



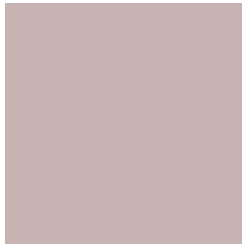
105.4580, -93.0230, -26.7110



22.8880, -20.3560, -5.5400

Previews

White Background



This preview shows how the YIQ color 185.4530, 11.9660, 3.4060 looks on a white background.

Color Contrast Check

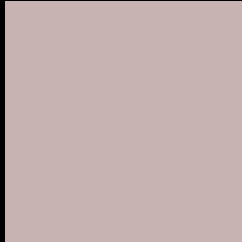
Large Text (above 18pt) WCAG AA × Fail

Any Text WCAG AA × Fail

Large Text (above 18pt) WCAG AAA × Fail

Any Text WCAG AAA × Fail

Black Background



This preview shows how the YIQ color 185.4530, 11.9660, 3.4060 looks on a black background.

Color Contrast Check

Large Text (above 18pt) WCAG AA ✓ Pass

Any Text WCAG AA ✓ Pass

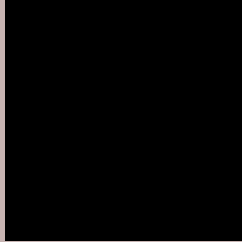
Large Text (above 18pt) WCAG AAA ✓ Pass

Any Text WCAG AAA ✓ Pass

If you want to check with other color combinations, try the [Color Contrast Checker](#).

YIQ 185.4530, 11.9660, 3.4060

Background



This preview shows how black text looks on a background with the YIQ color 185.4530, 11.9660, 3.4060.



This preview shows how white text looks on a background with the YIQ color 185.4530, 11.9660,

3.4060.

Color Blindness Simulation

Color vision deficiency is a very complex topic, and I could not describe the different causes any better than Wikipedia does, so if you want to learn more, you should check out their [article about color blindness](#).

Dichromacy



Original Color

185.4530, 11.9660, 3.4060

Protanopia

184.1530, 3.9430, 0.1270

Deuteranopia

185.7740, 15.4960, 5.5120



Tritanopia

186.4730, 9.2140, 9.2300

Trichromacy



Original Color

185.4530, 11.9660, 3.4060

Protanomaly

184.6480, 6.9230, 1.1870

Deuteranomaly

185.7630, 14.0290, 4.5650

Tritanomaly

186.1910, 9.9480, 6.9400

Monochromacy



Original Color

185.4530, 11.9660, 3.4060

Achromatopsia

185.0000, -0.0000, -0.0000

Achromatomaly

184.9790, 4.4930, 1.1730

CSS Examples

Text

The CSS property to change the color of the text to YIQ 185.4530, 11.9660, 3.4060 is called "color". The color property can be set on classes, ids or directly on the HTML element.

This example shows how text in the color `rgb(199, 180, 178)` looks like.

```
.text, #text, p{  
    color:rgb(199, 180, 178)  
}
```

If you want to add a text shadow in that color use the text-shadow property, you can generate a text shadow directly with our [CSS Text Shadow Generator](#).

Here you see how black text with a 4 pixel rgb(199, 180, 178) colored shadow looks like.

```
.shadow{ text-shadow: 4px 4px 2px rgb(199, 180, 178) }
```

Border

The CSS property to change the border of an element to YIQ 185.4530, 11.9660, 3.4060 is called "border". The border property can be set on classes, ids or directly on the HTML element.

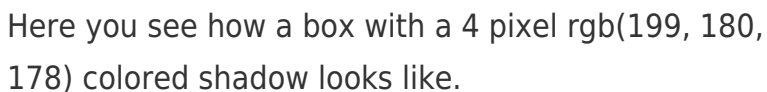
This example shows the color as border, it can be applied via the CSS property "border" or "border-color".

```
.border, #border, table{ border:4px solid rgb(199, 180, 178) }
```


If only the border color should be changed use the property `border-color`.

```
.border{ border-color:rgb(199, 180, 178) }
```

If you want to add a box shadow in that color use:



Here you see how a box with a 4 pixel `rgb(199, 180, 178)` colored shadow looks like.

```
.boxshadow{ -moz-box-shadow:4px 4px 4px 4px rgb(199, 180, 178); -webkit-box-shadow:4px 4px 4px 4px rgb(199, 180, 178); box-shadow:4px 4px 4px 4px rgb(199, 180, 178) }
```

Background

The CSS property to change the background color of an element to YIQ 185.4530, 11.9660, 3.4060 is called "background". The background property can be set on classes, ids or directly on the HTML element.

```
.background, #background, body{  
background: rgb(199, 180, 178) }
```

If only the background color should be changed can be used:

```
.background{ background-color: rgb(199,  
180, 178) }
```

This example shows the color as background, it is applied via the CSS property "background".

To optimize and compress your CSS code, you can use our [online CSS compressor and optimizer](#) based on csstidy. If you want to create a linear or radial gradient as background or border, check our [CSS Gradient Generator](#).

Hey! You found this booklet interesting? Support Converting Colors with the new Membership Option!

The pro membership hides all ads, plus gives you double the colors in the color bucket, and more awesome pro features!

[Learn more, Memberships starting at \\$2.50/m!](#)

**Follow me
on Twitter!**

@ConvertingColor