

Converting Colors

YIQ(185.9770, 25.1700, 6.4020)

Have a look what the booklet for
YIQ(185.9770, 25.1700, 6.4020)
contains.

YIQ(185.9770, 25.1700, 6.4020)	3
<i>Conversions</i>	4
<i>Details</i>	6
<i>Harmonies</i>	12
<i>Previews</i>	24
<i>Color Blindness Simulation</i>	28
<i>CSS Examples</i>	31

Color

**YIQ(185.9770, 25.1700,
6.4020)**

Conversions

Conversions Part 1

Format	Color
Hex	D6AFA9
RGB	214, 175, 169
RGB Percent	84%, 69%, 66%
CMY	0.1607, 0.3138, 0.3371
CMYK	0.00, 0.18, 0.21, 0.16
HSL	8°, 35%, 75%
HSV	8°, 21%, 84%
XYZ	50.2289, 47.8187, 44.1318
YIQ	185.9770, 25.1700, 6.4020

Conversions

Conversions Part 2

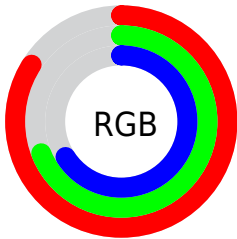
Format	Color
R_{YB}	214, 176, 169
Decimal	14069673
CIE _{Lab}	74.71, 13.25, 8.39
CIE _{LCh}	75, 15.680, 32.333
Yxy	47.8187, 0.3533, 0.3363
Android (android.graphics.Color)	4292259753 (0xFFD6AFA9)
YUV	185.9770, -8.3697, 24.5762
Hunter-Lab	69.1511, 8.6418, 10.5672

Details

The YIQ color **185.9770, 25.1700, 6.4020** is a light color, and the websafe version is hex **CC9999**. A complement of this color would be **197.0230, -25.1700, -6.4020**, and the grayscale version is **186.0000, -0.0000, -0.0000**.

A 20% lighter version of the original color is **237.3780, 16.5510, 2.9110**, and **132.4930, 23.6570, 6.2890** is the 20% darker color. If you saturate the color by 10%, you get **172.4300, 37.1360, 9.8080**, and if you desaturate by 10%, it is **199.5240, 13.2040, 2.9960**.

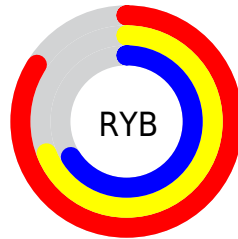
Distribution



Red (84%)

Green (69%)

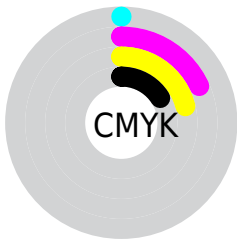
Blue (66%)



Red (84%)

Yellow (69%)

Blue (66%)

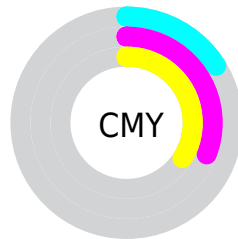


Cyan (0%)

Magenta (18%)

Yellow (21%)

Black (16%)



Cyan (16%)


Magenta (31%)


Yellow (34%)

Brightness & Saturation Gradients


These gradients show how the YIQ color 185.9770, 25.1700, 6.4020 changes by changing the brightness by 10 percent. The first figure shows a shift by +10% for each color and the second figure -10%.


Similar to the brightness gradients but the following saturation gradients show a change of the YIQ color 185.9770, 25.1700, 6.4020 by changing the saturation by 10% instead.


 185.9770, 25.1700,
6.4020

 185.9770, 25.1700,
6.4020


255.0000, -0.0000,
-0.0000


 158.7920, 24.2530,
6.5010


 237.3780, 16.5510,
2.9110


 132.4930, 23.6570,
6.2890

254.7720, 0.6420,
-0.6220

 107.4820, 22.1900,
5.3420

 82.9980, 20.6770,
5.2290

 59.5140, 19.1640,
5.1160

 37.0300, 17.6510,
5.0030

 14.5850, 20.4020,

4.7060

0.0000, 0.0000,
0.0000

185.9770, 25.1700,
6.4020

185.9770, 25.1700,
6.4020

172.4300, 37.1360,
9.8080

199.5240, 13.2040,
2.9960

159.3560, 49.1480,
12.3800

212.5980, 1.1920,
0.4240

145.8090, 61.1140,
15.7860

226.1450,
-10.7740, -2.9820

132.7350, 73.1260,
18.3580

239.2190,
-22.7860, -5.5540

119.1880, 85.0920,
21.7640

242.7410,
-24.4360, -8.6920

■ 106.2280, 96.7830,
24.6470

■ 92.5670, 109.0700,
27.7420

■ 80.4220, 119.8440,
30.7240

Harmonies

Analogous

The Analogous color harmony consists of three colors that are next to each other on the color wheel.



186.6870, 20.3550, 11.0670



185.9770, 25.1700, 6.4020



184.5050, 23.3830, 0.2390

Triad

The Triadic color harmony groups three colors that are evenly spaced from another and form a triangle on the color wheel.



185.9770, 25.1700, 6.4020



179.9350, -10.5430, -12.6790



183.2940, -18.2030, 5.0050

Complementary

The Complementary color scheme is a pair of colors which are on the opposite of each other on the color wheel.



185.9770, 25.1700, 6.4020



197.0230, -25.1700, -6.4020

Split Complementary

Split-complementary colors differ from the complementary color scheme. The scheme consists of three colors, the original color and two neighbors of the complement color.



180.8150, -27.2800, -1.2000



185.9770, 25.1700, 6.4020



178.5300, -22.4640, -11.3920

Square

The Square scheme is like the rectangle color scheme, but the four colors are evenly spaced on the color wheel.



185.9770, 25.1700, 6.4020



181.7040, 3.3490, -11.1390



179.0440, -29.6630, -7.5750



185.5840, -4.2200, 10.4040

Rectangle

The Rectangle color scheme consists of four colors that form a rectangle on the color wheel.



185.9770, 25.1700, 6.4020



184.1190, 18.4780, -4.4820



179.0440, -29.6630, -7.5750



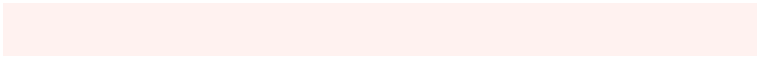
182.3860, -21.4580, 3.4220

Sweetspot

The Sweet Spot groups the original color and five complimentary colors.



185.9770, 25.1700, 6.4020



245.6590, 8.3900, 2.1340



187.0150, 13.9800, 21.9800



122.2780, 5.0890, 1.3850



0.0000, 0.0000, 0.0000



128.0000, -0.0000, -0.0000

Same Dimension

The Same Dimension uses a secret algorithm to generate beautiful new colors.



185.9770, 25.1700, 6.4020



215.4190, 35.6690, 8.8610



198.8910, 19.1200, -5.1040



100.4630, 6.0060, 1.2860



64.6300, 95.5910, 24.2230



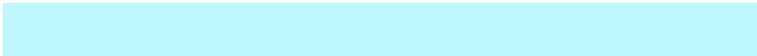
16.3790, 23.9780, 5.9780

Inverse Universe

The Inverse Universe completely reimagines the original color for something new.



197.0230, -25.1700, -6.4020



231.1680, -35.9440, -9.3840



184.1090, -19.1200, 5.1040



103.1240, -6.2810, -1.8090



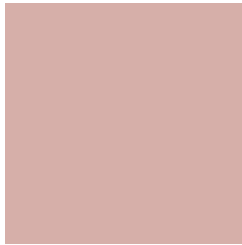
106.3700, -95.5910, -24.2230



27.2080, -24.2530, -6.5010

Previews

White Background



This preview shows how the YIQ color 185.9770, 25.1700, 6.4020 looks on a white background.

Color Contrast Check

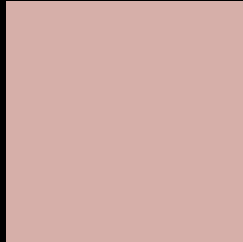
Large Text (above 18pt) WCAG AA × Fail

Any Text WCAG AA × Fail

Large Text (above 18pt) WCAG AAA × Fail

Any Text WCAG AAA × Fail

Black Background



This preview shows how the YIQ color 185.9770, 25.1700, 6.4020 looks on a black background.

Color Contrast Check

Large Text (above 18pt) WCAG AA ✓ Pass

Any Text WCAG AA ✓ Pass

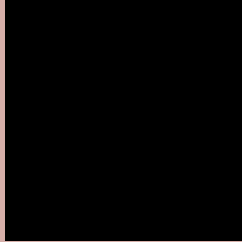
Large Text (above 18pt) WCAG AAA ✓ Pass

Any Text WCAG AAA ✓ Pass

If you want to check with other color combinations, try the [Color Contrast Checker](#).

YIQ 185.9770, 25.1700, 6.4020

Background



This preview shows how black text looks on a background with the YIQ color 185.9770, 25.1700, 6.4020.



This preview shows how white text looks on a background with the YIQ color 185.9770, 25.1700,

Color Blindness Simulation

Color vision deficiency is a very complex topic, and I could not describe the different causes any better than Wikipedia does, so if you want to learn more, you should check out their [article about color blindness](#).

Dichromacy



Original Color

185.9770, 25.1700, 6.4020

Protanopia

184.0670, 7.0610, -1.3150

Deuteranopia

185.9440, 20.7690, 3.5610



Tritanopia

186.7520, 21.7300, 13.6820

Trichromacy



Original Color

185.9770, 25.1700, 6.4020

Protanomaly

184.7690, 13.8920, 1.5400

Deuteranomaly

185.9550, 22.2360, 4.5080

Tritanomaly

186.3560, 22.7850, 11.0810

Monochromacy



Original Color

185.9770, 25.1700, 6.4020

Achromatopsia

186.0000, -0.0000, -0.0000

Achromatomaly

185.9580, 8.9860, 2.3460

CSS Examples

Text

The CSS property to change the color of the text to YIQ 185.9770, 25.1700, 6.4020 is called "color". The color property can be set on classes, ids or directly on the HTML element.

This example shows how text in the color `rgb(214, 175, 169)` looks like.

```
.text, #text, p{  
    color:rgb(214, 175, 169)  
}
```

If you want to add a text shadow in that color use the text-shadow property, you can generate a text shadow directly with our [CSS Text Shadow Generator](#).

Here you see how black text with a 4 pixel rgb(214, 175, 169) colored shadow looks like.

```
.shadow{ text-shadow: 4px 4px 2px rgb(214, 175, 169) }
```

Border

The CSS property to change the border of an element to YIQ 185.9770, 25.1700, 6.4020 is called "border". The border property can be set on classes, ids or directly on the HTML element.

This example shows the color as border, it can be applied via the CSS property "border" or "border-color".

```
.border, #border, table{ border:4px solid rgb(214, 175, 169) }
```


If only the border color should be changed use the property `border-color`.

```
.border{ border-color:rgb(214, 175, 169) }
```

If you want to add a box shadow in that color use:

Here you see how a box with a 4 pixel `rgb(214, 175, 169)` colored shadow looks like.

```
.boxshadow{ -moz-box-shadow:4px 4px 4px  
4px rgb(214, 175, 169); -webkit-box-  
shadow:4px 4px 4px 4px rgb(214, 175, 169);  
box-shadow:4px 4px 4px 4px rgb(214, 175,  
169) }
```

Background

The CSS property to change the background color of an element to YIQ 185.9770, 25.1700, 6.4020 is called "background". The background property can be set on classes, ids or directly on the HTML element.

```
.background, #background, body{  
background: rgb(214, 175, 169) }
```

If only the background color should be changed can be used:

```
.background{ background-color: rgb(214,  
175, 169) }
```

This example shows the color as background, it is applied via the CSS property "background".

To optimize and compress your CSS code, you can use our [online CSS compressor and optimizer](#) based on csstidy. If you want to create a linear or radial gradient as background or border, check our [CSS Gradient Generator](#).

Hey! You found this booklet interesting? Support Converting Colors with the new Membership Option!

The pro membership hides all ads, plus gives you double the colors in the color bucket, and more awesome pro features!

[Learn more, Memberships starting at \\$2.50/m!](#)

**Follow me
on Twitter!**

@ConvertingColor