

Converting Colors

YIQ(186.0480, 26.4080, 5.9920)

Have a look what the booklet for
YIQ(186.0480, 26.4080, 5.9920)
contains.

YIQ(186.0480, 26.4080, 5.9920)	3
<i>Conversions</i>	4
<i>Details</i>	6
<i>Harmonies</i>	12
<i>Previews</i>	24
<i>Color Blindness Simulation</i>	28
<i>CSS Examples</i>	31

Color

**YIQ(186.0480, 26.4080,
5.9920)**

Conversions

Conversions Part 1

Format	Color
Hex	D7AFA7
RGB	215, 175, 167
RGB Percent	84%, 69%, 65%
CMY	0.1568, 0.3138, 0.3450
CMYK	0.00, 0.19, 0.22, 0.16
HSL	10°, 38%, 75%
HSV	10°, 22%, 84%
XYZ	50.3355, 47.8950, 43.1646
YIQ	186.0480, 26.4080, 5.9920

Conversions

Conversions Part 2

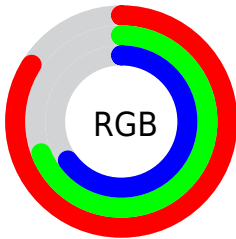
Format	Color
R _Y B	215, 177, 167
Decimal	14135207
CIE Lab	74.76, 13.33, 9.56
CIE LCh	75, 16.400, 35.650
Yxy	47.8950, 0.3560, 0.3387
Android (android.graphics.Color)	4292325287 (0xFFD7AFA7)
YUV	186.0480, -9.3907, 25.3909
Hunter-Lab	69.2062, 8.7167, 11.4646

Details

The YIQ color **186.0480, 26.4080, 5.9920** is a light color, and the websafe version is hex **CC9999**. A complement of this color would be **195.9520, -26.4080, -5.9920**, and the grayscale version is **186.0000, -0.0000, -0.0000**.

A 20% lighter version of the original color is **237.1500, 17.1930, 2.2890**, and **132.5640, 24.8950, 5.8790** is the 20% darker color. If you saturate the color by 10%, you get **173.0880, 38.0990, 8.8750**, and if you desaturate by 10%, it is **199.1220, 14.3960, 3.4200**.

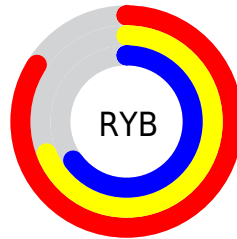
Distribution



Red (84%)

Green (69%)

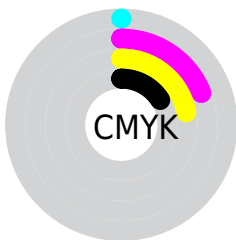
Blue (65%)



Red (84%)

Yellow (69%)

Blue (65%)

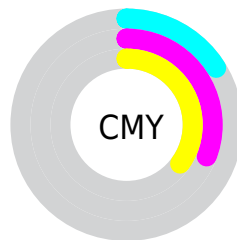


Cyan (0%)

Magenta (19%)

Yellow (22%)

Black (16%)



Cyan (16%)

Magenta (31%)

Yellow (35%)

Brightness & Saturation Gradients

These gradients show how the YIQ color 186.0480, 26.4080, 5.9920 changes by changing the brightness by 10 percent. The first figure shows a shift by +10% for each color and the second figure -10%.

Similar to the brightness gradients but the following saturation gradients show a change of the YIQ color 186.0480, 26.4080, 5.9920 by changing the saturation by 10% instead.

■ 186.0480, 26.4080,
5.9920

■ 186.0480, 26.4080,
5.9920

255.0000, -0.0000,
-0.0000

■ 158.8630, 25.4910,
6.0910

■ 237.1500, 17.1930,
2.2890

■ 132.5640, 24.8950,
5.8790

■ 254.5440, 1.2840,
-1.2440

■ 107.6670, 23.1070,
5.2430

■ 83.0690, 21.9150,
4.8190

■ 59.5850, 20.4020,
4.7060

■ 37.1010, 18.8890,
4.5930

■ 14.5850, 20.4020,

4.7060

0.0000, 0.0000,
0.0000

186.0480, 26.4080,
5.9920

186.0480, 26.4080,
5.9920

173.0880, 38.0990,
8.8750

199.1220, 14.3960,
3.4200

160.0140, 50.1110,
11.4470

212.0820, 2.7050,
0.5370

147.0540, 61.8020,
14.3300

225.1560, -9.3070,
-2.0350

133.9800, 73.8140,
16.9020

238.1160,
-20.9980, -4.9180

121.0200, 85.5050,
19.7850

243.0400,
-23.8400, -8.4800

■ 107.9460, 97.5170,
22.3570

■ 94.9860, 109.2080,
25.2400

■ 85.4170, 118.2400,
26.7520

Harmonies

Analogous

The Analogous color harmony consists of three colors that are next to each other on the color wheel.



187.1710, 21.8680, 11.1800



186.0480, 26.4080, 5.9920



184.8640, 23.7500, -0.9060

Triad

The Triadic color harmony groups three colors that are evenly spaced from another and form a triangle on the color wheel.



186.0480, 26.4080, 5.9920



179.7390, -12.9270, -13.5270



183.5330, -17.3780, 6.5740

Complementary

The Complementary color scheme is a pair of colors which are on the opposite of each other on the color wheel.



186.0480, 26.4080, 5.9920



195.9520, -26.4080, -5.9920

Split Complementary

Split-complementary colors differ from the complementary color scheme. The scheme consists of three colors, the original color and two neighbors of the complement color.



181.0430, -27.9220, -0.5780



186.0480, 26.4080, 5.9920



178.4480, -25.1690, -11.9290

Square

The Square scheme is like the rectangle color scheme, but the four colors are evenly spaced on the color wheel.



186.0480, 26.4080, 5.9920



181.1060, 2.1570, -11.5630



178.9730, -30.9010, -7.1650



185.5950, -2.7530, 11.3510

Rectangle

The Rectangle color scheme consists of four colors that form a rectangle on the color wheel.



186.0480, 26.4080, 5.9920



183.5920, 18.5240, -5.3160



178.9730, -30.9010, -7.1650



182.9130, -21.5040, 4.2560

Sweetspot

The Sweet Spot groups the original color and five complimentary colors.



186.0480, 26.4080, 5.9920



244.1430, 9.9030, 2.2470



186.0260, 15.4470, 22.9270



121.4630, 6.0060, 1.2860



0.0000, 0.0000, 0.0000



128.0000, -0.0000, -0.0000

Same Dimension

The Same Dimension uses a secret algorithm to generate beautiful new colors.



186.0480, 26.4080, 5.9920



213.6750, 37.8240, 8.3520



199.5490, 20.0830, -6.0370



100.4630, 6.0060, 1.2860



67.5650, 94.2160, 21.6080



16.9660, 23.7030, 5.4550

Inverse Universe

The Inverse Universe completely reimagines the original color for something new.



195.9520, -26.4080, -5.9920



227.9120, -38.0990, -8.8750



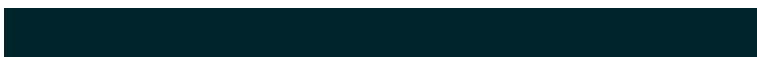
182.4510, -20.0830, 6.0370



102.5370, -6.0060, -1.2860



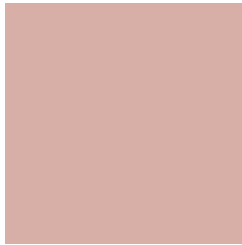
103.4350, -94.2160, -21.6080



26.0340, -23.7030, -5.4550

Previews

White Background



This preview shows how the YIQ color 186.0480, 26.4080, 5.9920 looks on a white background.

Color Contrast Check

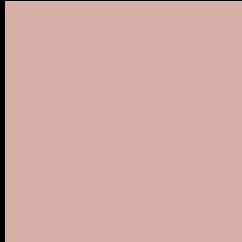
Large Text (above 18pt) WCAG AA × Fail

Any Text WCAG AA × Fail

Large Text (above 18pt) WCAG AAA × Fail

Any Text WCAG AAA × Fail

Black Background



This preview shows how the YIQ color 186.0480, 26.4080, 5.9920 looks on a black background.

Color Contrast Check

Large Text (above 18pt) WCAG AA ✓ Pass

Any Text WCAG AA ✓ Pass

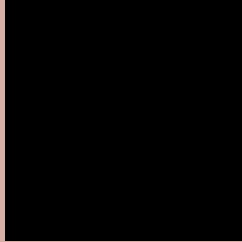
Large Text (above 18pt) WCAG AAA ✓ Pass

Any Text WCAG AAA ✓ Pass

If you want to check with other color combinations, try the [Color Contrast Checker](#).

YIQ 186.0480, 26.4080, 5.9920

Background



This preview shows how black text looks on a background with the YIQ color 186.0480, 26.4080, 5.9920.



This preview shows how white text looks on a background with the YIQ color 186.0480, 26.4080,

Color Blindness Simulation

Color vision deficiency is a very complex topic, and I could not describe the different causes any better than Wikipedia does, so if you want to learn more, you should check out their [article about color blindness](#).

Dichromacy



Original Color

186.0480, 26.4080, 5.9920

Protanopia

184.4260, 7.4280, -2.4600

Deuteranopia

185.7160, 21.4110, 2.9390



Tritanopia

187.0510, 22.3260, 13.8940

Trichromacy



Original Color

186.0480, 26.4080, 5.9920

Protanomaly

185.1280, 14.2590, 0.3950

Deuteranomaly

186.0260, 23.4740, 4.0980

Tritanomaly

186.5410, 23.7020, 10.9820

Monochromacy



Original Color

186.0480, 26.4080, 5.9920

Achromatopsia

186.0000, -0.0000, -0.0000

Achromatomaly

186.1430, 9.9030, 2.2470

CSS Examples

Text

The CSS property to change the color of the text to YIQ 186.0480, 26.4080, 5.9920 is called "color". The color property can be set on classes, ids or directly on the HTML element.

This example shows how text in the color `rgb(215, 175, 167)` looks like.

```
.text, #text, p{  
    color:rgb(215, 175, 167)  
}
```

If you want to add a text shadow in that color use the text-shadow property, you can generate a text shadow directly with our [CSS Text Shadow Generator](#).

Here you see how black text with a 4 pixel rgb(215, 175, 167) colored shadow looks like.

```
.shadow{ text-shadow: 4px 4px 2px rgb(215, 175, 167) }
```

Border

The CSS property to change the border of an element to YIQ 186.0480, 26.4080, 5.9920 is called "border". The border property can be set on classes, ids or directly on the HTML element.

This example shows the color as border, it can be applied via the CSS property "border" or "border-color".

```
.border, #border, table{ border:4px solid rgb(215, 175, 167) }
```


If only the border color should be changed use the property `border-color`.

```
.border{ border-color:rgb(215, 175, 167) }
```

If you want to add a box shadow in that color use:

Here you see how a box with a 4 pixel `rgb(215, 175, 167)` colored shadow looks like.

```
.boxshadow{ -moz-box-shadow:4px 4px 4px  
4px rgb(215, 175, 167); -webkit-box-  
shadow:4px 4px 4px 4px rgb(215, 175, 167);  
box-shadow:4px 4px 4px 4px rgb(215, 175,  
167) }
```

Background

The CSS property to change the background color of an element to YIQ 186.0480, 26.4080, 5.9920 is called "background". The background property can be set on classes, ids or directly on the HTML element.

```
.background, #background, body{  
background: rgb(215, 175, 167) }
```

If only the background color should be changed can be used:

```
.background{ background-color: rgb(215,  
175, 167) }
```

This example shows the color as background, it is applied via the CSS property "background".

To optimize and compress your CSS code, you can use our [online CSS compressor and optimizer](#) based on csstidy. If you want to create a linear or radial gradient as background or border, check our [CSS Gradient Generator](#).

Hey! You found this booklet interesting? Support Converting Colors with the new Membership Option!

The pro membership hides all ads, plus gives you double the colors in the color bucket, and more awesome pro features!

[Learn more, Memberships starting at \\$2.50/m!](#)

**Follow me
on Twitter!**

@ConvertingColor