

Converting Colors

YIQ(186.1770, 12.5630, -1.9090)

Have a look what the booklet for
YIQ(186.1770, 12.5630, -1.9090)
contains.

YIQ(186.1770, 12.5630, -1.9090)	3
<i>Conversions</i>	4
<i>Details</i>	6
<i>Harmonies</i>	12
<i>Previews</i>	24
<i>Color Blindness Simulation</i>	28
<i>CSS Examples</i>	31

Color

**YIQ(186.1770, 12.5630,
-1.9090)**

Conversions

Conversions Part 1

Format	Color
Hex	C5B8A9
RGB	197, 184, 169
RGB Percent	77%, 72%, 66%
CMY	0.2274, 0.2784, 0.3372
CMYK	0.00, 0.07, 0.14, 0.23
HSL	32°, 19%, 72%
HSV	32°, 14%, 77%
XYZ	47.3297, 49.0149, 44.5101
YIQ	186.1770, 12.5630, -1.9090

Conversions

Conversions Part 2

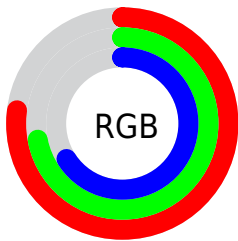
Format	Color
RYB	193, 197, 169
Decimal	12957865
CIELab	75.46, 2.08, 9.26
CIELCh	75, 9.489, 77.319
Yxy	49.0149, 0.3360, 0.3480
Android (android.graphics.Color)	4291147945 (0xFFC5B8A9)
YUV	186.1770, -8.4683, 9.4918
Hunter-Lab	70.0107, -1.8464, 11.3131

Details

The YIQ color **186.1770, 12.5630, -1.9090** is a light color, and the websafe version is hex **CCCCCC**. A complement of this color would be **179.8230, -12.5630, 1.9090**, and the grayscale version is **186.0000, -0.0000, -0.0000**.

A 20% lighter version of the original color is **242.3620, 13.4800, -2.0080**, and **132.9920, 11.6460, -1.8100** is the 20% darker color. If you saturate the color by 10%, you get **178.6140, 21.4580, -3.4220**, and if you desaturate by 10%, it is **193.7400, 3.6680, -0.3960**.

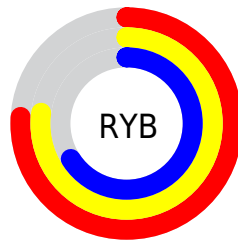
Distribution



Red (77%)

Green (72%)

Blue (66%)



Red (76%)

Yellow (77%)

Blue (66%)

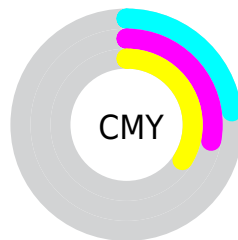


Cyan (0%)

Magenta (7%)

Yellow (14%)

Black (23%)



Cyan (23%)

Magenta (28%)

Yellow (34%)

Brightness & Saturation Gradients

These gradients show how the YIQ color 186.1770, 12.5630, -1.9090 changes by changing the brightness by 10 percent. The first figure shows a shift by +10% for each color and the second figure -10%.

Similar to the brightness gradients but the following saturation gradients show a change of the YIQ color 186.1770, 12.5630, -1.9090 by changing the saturation by 10% instead.

■ 186.1770, 12.5630,
-1.9090

■ 186.1770, 12.5630,
-1.9090

255.0000, -0.0000,
-0.0000

■ 159.2910, 12.2420,
-1.5980

■ 242.3620, 13.4800,
-2.0080

■ 132.9920, 11.6460,
-1.8100

254.7720, 0.6420,
-0.6220

■ 107.6930, 11.0500,
-2.0220

■ 83.8070, 10.7290,
-1.7110

■ 60.5080, 10.1330,
-1.9230

■ 38.4370, 8.8950,
-1.5130

■ 17.4650, 11.6920,

-2.6440

■ 0.0000, 0.0000,
0.0000

■ 186.1770, 12.5630,
-1.9090

■ 186.1770, 12.5630,
-1.9090

■ 178.6140, 21.4580,
-3.4220

■ 193.7400, 3.6680,
-0.3960

■ 171.1650, 30.0320,
-4.6240

■ 201.1890, -4.9060,
0.8060

■ 163.6020, 38.9270,
-6.1370

■ 208.7520,
-13.8010, 2.3190

■ 155.4520, 48.0970,
-7.1270

■ 216.9020,
-22.9710, 3.3090

■ 148.0030, 56.6710,
-8.3290

■ 222.9830,
-27.6930, 0.7790

■ 140.4400, 65.5660,
-9.8420

■ 228.2660,
-30.1680, -3.9280

■ 132.8770, 74.4610,
-11.3550

■ 233.5490,
-32.6430, -8.6350

■ 125.3140, 83.3560,
-12.8680

■ 237.6580,
-34.5680, -12.2960

■ 120.5380, 88.5370,
-13.1510

Harmonies

Analogous

The Analogous color harmony consists of three colors that are next to each other on the color wheel.



186.6660, 15.6800, 2.1760



186.1770, 12.5630, -1.9090



185.2470, 6.3740, -5.3860

Triad

The Triadic color harmony groups three colors that are evenly spaced from another and form a triangle on the color wheel.



186.1770, 12.5630, -1.9090



183.2260, -15.4960, -5.5120



187.4120, 2.0160, 7.5200

Complementary

The Complementary color scheme is a pair of colors which are on the opposite of each other on the color wheel.



186.1770, 12.5630, -1.9090



179.8230, -12.5630, 1.9090

Split Complementary

Split-complementary colors differ from the complementary color scheme. The scheme consists of three colors, the original color and two neighbors of the complement color.



186.3400, -6.6490, 4.8630



186.1770, 12.5630, -1.9090



183.7360, -16.8720, -2.6000

Square

The Square scheme is like the rectangle color scheme, but the four colors are evenly spaced on the color wheel.



186.1770, 12.5630, -1.9090



183.3960, -10.2230, -7.4630



185.2250, -13.7550, 1.4850



187.7180, 9.9020, 7.7740

Rectangle

The Rectangle color scheme consists of four colors that form a rectangle on the color wheel.



186.1770, 12.5630, -1.9090



184.6700, 0.6890, -6.9830



185.2250, -13.7550, 1.4850



187.0310, -1.2850, 6.7710

Sweetspot

The Sweet Spot groups the original color and five complimentary colors.



186.1770, 12.5630, -1.9090



250.9250, 4.5850, -0.4950



178.8540, 12.5150, 9.9790



125.4410, 3.0720, -0.6080



0.0000, 0.0000, 0.0000



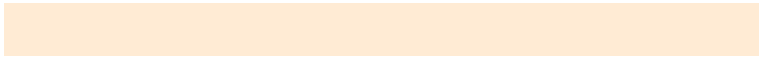
128.0000, -0.0000, -0.0000

Same Dimension

The Same Dimension uses a secret algorithm to generate beautiful new colors.



186.1770, 12.5630, -1.9090



238.3580, 19.3030, -2.9130



193.5090, 8.3920, -8.9200



95.6260, 3.9890, -0.7070



99.8060, 73.2230, -10.9450



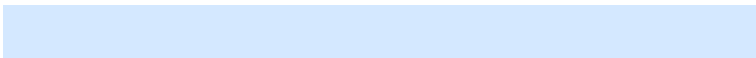
21.9170, 16.2310, -2.3050

Inverse Universe

The Inverse Universe completely reimagines the original color for something new.



179.8230, -12.5630, 1.9090



228.6420, -19.3030, 2.9130



172.4910, -8.3920, 8.9200



93.3740, -3.9890, 0.7070



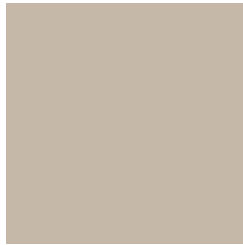
63.1940, -73.2230, 10.9450



14.0830, -16.2310, 2.3050

Previews

White Background



This preview shows how the YIQ color 186.1770, 12.5630, -1.9090 looks on a white background.

Color Contrast Check

Large Text (above 18pt) WCAG AA × Fail

Any Text WCAG AA × Fail

Large Text (above 18pt) WCAG AAA × Fail

Any Text WCAG AAA × Fail

Black Background



This preview shows how the YIQ color 186.1770, 12.5630, -1.9090 looks on a black background.

Color Contrast Check

Large Text (above 18pt) WCAG AA ✓ Pass

Any Text WCAG AA ✓ Pass

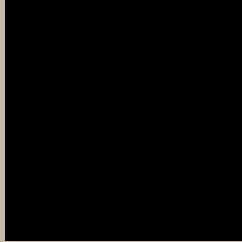
Large Text (above 18pt) WCAG AAA ✓ Pass

Any Text WCAG AAA ✓ Pass

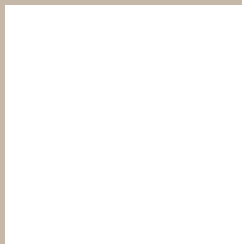
If you want to check with other color combinations, try the [Color Contrast Checker](#).

YIQ 186.1770, 12.5630, -1.9090

Background



This preview shows how black text looks on a background with the YIQ color 186.1770, 12.5630, -1.9090.



This preview shows how white text looks on a background with the YIQ color 186.1770, 12.5630,

-1.9090.

Color Blindness Simulation

Color vision deficiency is a very complex topic, and I could not describe the different causes any better than Wikipedia does, so if you want to learn more, you should check out their [article about color blindness](#).

Dichromacy



Original Color

186.1770, 12.5630, -1.9090

Protanopia

185.6820, 9.5830, -2.9690

Deuteranopia

187.2430, 21.3650, 3.7730



Tritanopia

187.5760, 7.4260, 8.5940

Trichromacy



Original Color

186.1770, 12.5630, -1.9090

Protanomaly

185.9810, 10.1790, -2.7570

Deuteranomaly

186.9220, 17.8350, 1.6670

Tritanomaly

186.8380, 9.4440, 5.0600

Monochromacy



Original Color

186.1770, 12.5630, -1.9090

Achromatopsia

186.0000, -0.0000, -0.0000

Achromatomaly

185.9250, 4.5850, -0.4950

CSS Examples

Text

The CSS property to change the color of the text to YIQ 186.1770, 12.5630, -1.9090 is called "color". The color property can be set on classes, ids or directly on the HTML element.

This example shows how text in the color `rgb(197, 184, 169)` looks like.

```
.text, #text, p{  
    color:rgb(197, 184, 169)  
}
```

If you want to add a text shadow in that color use the text-shadow property, you can generate a text shadow directly with our [CSS Text Shadow Generator](#).

Here you see how black text with a 4 pixel rgb(197, 184, 169) colored shadow looks like.

```
.shadow{ text-shadow: 4px 4px 2px rgb(197, 184, 169) }
```

Border

The CSS property to change the border of an element to YIQ 186.1770, 12.5630, -1.9090 is called "border". The border property can be set on classes, ids or directly on the HTML element.

This example shows the color as border, it can be applied via the CSS property "border" or "border-color".

```
.border, #border, table{ border:4px solid rgb(197, 184, 169) }
```


If only the border color should be changed use the property `border-color`.

```
.border{ border-color:rgb(197, 184, 169) }
```

If you want to add a box shadow in that color use:

Here you see how a box with a 4 pixel `rgb(197, 184, 169)` colored shadow looks like.

```
.boxshadow{ -moz-box-shadow:4px 4px 4px  
4px rgb(197, 184, 169); -webkit-box-  
shadow:4px 4px 4px 4px rgb(197, 184, 169);  
box-shadow:4px 4px 4px 4px rgb(197, 184,  
169) }
```

Background

The CSS property to change the background color of an element to YIQ 186.1770, 12.5630, -1.9090 is called "background". The background property can be set on classes, ids or directly on the HTML element.

```
.background, #background, body{  
background: rgb(197, 184, 169) }
```

If only the background color should be changed can be used:

```
.background{ background-color: rgb(197,  
184, 169) }
```

This example shows the color as background, it is applied via the CSS property "background".

To optimize and compress your CSS code, you can use our [online CSS compressor and optimizer](#) based on csstidy. If you want to create a linear or radial gradient as background or border, check our [CSS Gradient Generator](#).

Hey! You found this booklet interesting? Support Converting Colors with the new Membership Option!

The pro membership hides all ads, plus gives you double the colors in the color bucket, and more awesome pro features!

[Learn more, Memberships starting at \\$2.50/m!](#)

**Follow me
on Twitter!**

@ConvertingColor