

Converting Colors

YIQ(186.3220, 28.1520, -3.5920)

Have a look what the booklet for
YIQ(186.3220, 28.1520, -3.5920)
contains.

YIQ(186.3220, 28.1520, -3.5920)	3
<i>Conversions</i>	4
<i>Details</i>	6
<i>Harmonies</i>	12
<i>Previews</i>	24
<i>Color Blindness Simulation</i>	28
<i>CSS Examples</i>	31

Color

**YIQ(186.3220, 28.1520,
-3.5920)**

Conversions

Conversions Part 1

Format	Color
Hex	D3B595
RGB	211, 181, 149
RGB Percent	83%, 71%, 58%
CMY	0.1725, 0.2902, 0.4155
CMYK	0.00, 0.14, 0.29, 0.17
HSL	31°, 41%, 71%
HSV	31°, 29%, 83%
XYZ	48.8166, 49.0644, 35.3458
YIQ	186.3220, 28.1520, -3.5920

Conversions

Conversions Part 2

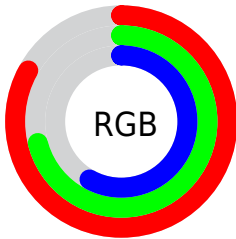
Format	Color
R _Y B	207, 211, 149
Decimal	13874581
CIE Lab	75.49, 6.06, 20.29
CIE LCh	75, 21.175, 73.376
Yxy	49.0644, 0.3664, 0.3683
Android (android.graphics.Color)	4292064661 (0xFFD3B595)
YUV	186.3220, -18.3997, 21.6426
Hunter-Lab	70.0460, 1.8201, 19.1140

Details

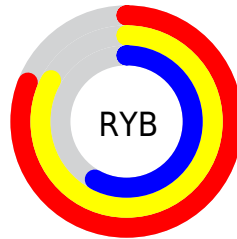
The YIQ color **186.3220, 28.1520, -3.5920** is a light color, and the websafe version is hex **CCCC99**. A complement of this color would be **173.6780, -28.1520, 3.5920**, and the grayscale version is **186.0000, -0.0000, -0.0000**.

A 20% lighter version of the original color is **238.5060, 21.6420, -6.7580**, and **132.9520, 26.3180, -3.3940** is the 20% darker color. If you saturate the color by 10%, you get **178.0580, 37.6430, -4.8930**, and if you desaturate by 10%, it is **194.5860, 18.6610, -2.2910**.

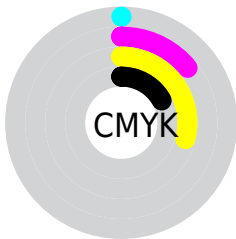
Distribution



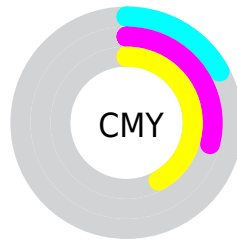
- Red (83%)
- Green (71%)
- Blue (58%)



- Red (81%)
- Yellow (83%)
- Blue (58%)



- Cyan (0%)
- Magenta (14%)
- Yellow (29%)
- Black (17%)





- Cyan (17%)
- Magenta (29%)
- Yellow (42%)

Brightness & Saturation Gradients


These gradients show how the YIQ color 186.3220, 28.1520, -3.5920 changes by changing the brightness by 10 percent. The first figure shows a shift by +10% for each color and the second figure -10%.


Similar to the brightness gradients but the following saturation gradients show a change of the YIQ color 186.3220, 28.1520, -3.5920 by changing the saturation by 10% instead.


 186.3220, 28.1520,
-3.5920

 186.3220, 28.1520,
-3.5920


255.0000, -0.0000,
-0.0000


 159.1370, 27.2350,
-3.4930


 238.5060, 21.6420,
-6.7580


 132.9520, 26.3180,
-3.3940

 252.2640, 7.7040,
-7.4640

 107.4680, 24.8050,
-3.5070

 82.9840, 23.2920,
-3.6200

 59.6140, 21.4580,
-3.4220

 37.3750, 20.6330,
-4.9910

 17.7860, 15.2220,

-0.5380

■ 0.0000, 0.0000,
0.0000

■ 186.3220, 28.1520,
-3.5920

■ 186.3220, 28.1520,
-3.5920

■ 178.0580, 37.6430,
-4.8930

■ 194.5860, 18.6610,
-2.2910

■ 169.7940, 47.1340,
-6.1940

■ 202.8500, 9.1700,
-0.9900

■ 160.9430, 56.9000,
-6.9720

■ 211.7010, -0.5960,
-0.2120

■ 152.6790, 66.3910,
-8.2730

■ 219.9650,
-10.0870, 1.0890

■ 144.4150, 75.8820,
-9.5740

■ 228.3430,
-19.8990, 2.7010

■ 136.0370, 85.6940,
-11.1860

■ 234.2130,
-22.6490, -2.5290

■ 127.1860, 95.4600,
-11.9640

■ 240.6700,
-25.6740, -8.2820

■ 127.0720, 95.7810,
-12.2750

■ 241.8440,
-26.2240, -9.3280

Harmonies

Analogous

The Analogous color harmony consists of three colors that are next to each other on the color wheel.



187.9410, 34.0190, 5.7230



186.3220, 28.1520, -3.5920



184.0490, 15.4990, -11.0690

Triad

The Triadic color harmony groups three colors that are evenly spaced from another and form a triangle on the color wheel.



186.3220, 28.1520, -3.5920



178.1200, -35.9890, -14.0770



188.6820, 1.5560, 15.8600

Complementary

The Complementary color scheme is a pair of colors which are on the opposite of each other on the color wheel.



186.3220, 28.1520, -3.5920



173.6780, -28.1520, 3.5920

Split Complementary

Split-complementary colors differ from the complementary color scheme. The scheme consists of three colors, the original color and two neighbors of the complement color.



186.4560, -18.4790, 10.0090



186.3220, 28.1520, -3.5920



178.6990, -41.8130, -7.6450

Square

The Square scheme is like the rectangle color scheme, but the four colors are evenly spaced on the color wheel.



186.3220, 28.1520, -3.5920



179.4390, -20.9500, -16.8060



182.3890, -34.7080, 1.2600



189.3050, 18.7950, 17.3150

Rectangle

The Rectangle color scheme consists of four colors that form a rectangle on the color wheel.



186.3220, 28.1520, -3.5920



182.4820, 3.8540, -14.7860



182.3890, -34.7080, 1.2600



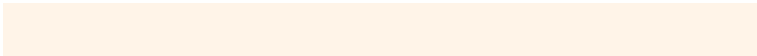
188.0340, -5.3670, 14.6730

Sweetspot

The Sweet Spot groups the original color and five complimentary colors.



186.3220, 28.1520, -3.5920



245.9210, 10.4080, -1.4000



171.0720, 27.0010, 22.7850



122.1810, 6.7400, -1.0040



0.0000, 0.0000, 0.0000



128.0000, -0.0000, -0.0000

Same Dimension

The Same Dimension uses a secret algorithm to generate beautiful new colors.



186.3220, 28.1520, -3.5920



219.6130, 40.3940, -5.1900



203.9320, 19.9020, -19.2820



100.2240, 5.1810, -0.2830



101.3010, 76.2030, -9.8850



24.5860, 18.6610, -2.2910

Inverse Universe

The Inverse Universe completely reimagines the original color for something new.



173.6780, -28.1520, 3.5920



201.3870, -40.3940, 5.1900



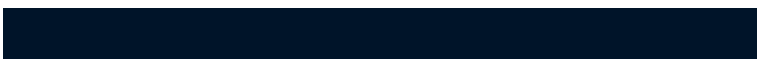
156.0680, -19.9020, 19.2820



98.1890, -4.9060, 0.8060



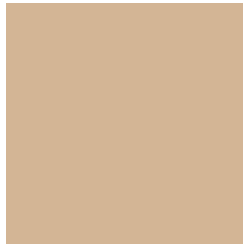
67.2860, -76.4780, 9.3620



16.4140, -18.6610, 2.2910

Previews

White Background



This preview shows how the YIQ color 186.3220, 28.1520, -3.5920 looks on a white background.

Color Contrast Check

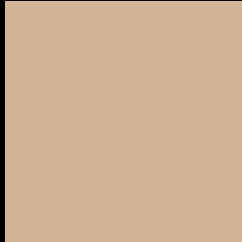
Large Text (above 18pt) WCAG AA × Fail

Any Text WCAG AA × Fail

Large Text (above 18pt) WCAG AAA × Fail

Any Text WCAG AAA × Fail

Black Background



This preview shows how the YIQ color 186.3220, 28.1520, -3.5920 looks on a black background.

Color Contrast Check

Large Text (above 18pt) WCAG AA ✓ Pass

Any Text WCAG AA ✓ Pass

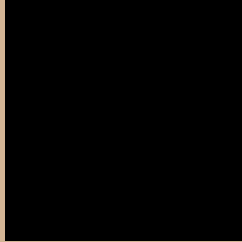
Large Text (above 18pt) WCAG AAA ✓ Pass

Any Text WCAG AAA ✓ Pass

If you want to check with other color combinations, try the [Color Contrast Checker](#).

YIQ 186.3220, 28.1520, -3.5920

Background



This preview shows how black text looks on a background with the YIQ color 186.3220, 28.1520, -3.5920.



This preview shows how white text looks on a background with the YIQ color 186.3220, 28.1520, -3.5920.

-3.5920.

Color Blindness Simulation

Color vision deficiency is a very complex topic, and I could not describe the different causes any better than Wikipedia does, so if you want to learn more, you should check out their [article about color blindness](#).

Dichromacy



Original Color

186.3220, 28.1520, -3.5920

Protanopia

185.2990, 17.7910, -8.5530

Deuteranopia

186.9420, 32.2780, -1.2740



Tritanopia

188.8550, 19.9420, 13.0460

Trichromacy



Original Color

186.3220, 28.1520, -3.5920

Protanomaly

185.5060, 21.6420, -6.7580

Deuteranomaly

186.9310, 30.8110, -2.2210

Tritanomaly

187.7210, 23.0150, 6.9110

Monochromacy



Original Color

186.3220, 28.1520, -3.5920

Achromatopsia

186.0000, -0.0000, -0.0000

Achromatomaly

186.0350, 10.0870, -1.0890

CSS Examples

Text

The CSS property to change the color of the text to YIQ 186.3220, 28.1520, -3.5920 is called "color". The color property can be set on classes, ids or directly on the HTML element.

This example shows how text in the color `rgb(211, 181, 149)` looks like.

```
.text, #text, p{  
    color:rgb(211, 181, 149)  
}
```

If you want to add a text shadow in that color use the text-shadow property, you can generate a text shadow directly with our [CSS Text Shadow Generator](#).

Here you see how black text with a 4 pixel rgb(211, 181, 149) colored shadow looks like.

```
.shadow{ text-shadow: 4px 4px 2px rgb(211, 181, 149) }
```

Border

The CSS property to change the border of an element to YIQ 186.3220, 28.1520, -3.5920 is called "border". The border property can be set on classes, ids or directly on the HTML element.

This example shows the color as border, it can be applied via the CSS property "border" or "border-color".

```
.border, #border, table{ border:4px solid rgb(211, 181, 149) }
```


If only the border color should be changed use the property `border-color`.

```
.border{ border-color:rgb(211, 181, 149) }
```

If you want to add a box shadow in that color use:

Here you see how a box with a 4 pixel `rgb(211, 181, 149)` colored shadow looks like.

```
.boxshadow{ -moz-box-shadow:4px 4px 4px  
4px rgb(211, 181, 149); -webkit-box-  
shadow:4px 4px 4px 4px rgb(211, 181, 149);  
box-shadow:4px 4px 4px 4px rgb(211, 181,  
149) }
```

Background

The CSS property to change the background color of an element to YIQ 186.3220, 28.1520, -3.5920 is called "background". The background property can be set on classes, ids or directly on the HTML element.

```
.background, #background, body{  
background: rgb(211, 181, 149) }
```

If only the background color should be changed can be used:

```
.background{ background-color: rgb(211,  
181, 149) }
```

This example shows the color as background, it is applied via the CSS property "background".

To optimize and compress your CSS code, you can use our [online CSS compressor and optimizer](#) based on csstidy. If you want to create a linear or radial gradient as background or border, check our [CSS Gradient Generator](#).

Hey! You found this booklet interesting? Support Converting Colors with the new Membership Option!

The pro membership hides all ads, plus gives you double the colors in the color bucket, and more awesome pro features!

[Learn more, Memberships starting at \\$2.50/m!](#)

**Follow me
on Twitter!**

@ConvertingColor