

# Converting Colors

YIQ(186.4470, 12.1030, 6.4310)

Have a look what the booklet for  
YIQ(186.4470, 12.1030, 6.4310)  
contains.

<b>YIQ(186.4470, 12.1030, 6.4310)</b> .....	3
<b><i>Conversions</i></b> .....	4
<b><i>Details</i></b> .....	6
<b><i>Harmonies</i></b> .....	12
<b><i>Previews</i></b> .....	24
<b><i>Color Blindness Simulation</i></b> .....	28
<b><i>CSS Examples</i></b> .....	31

# Color

**YIQ(186.4470, 12.1030,  
6.4310)**

# Conversions

## Conversions Part 1

Format	Color
Hex	CAB3B8
RGB	202, 179, 184
RGB Percent	79%, 70%, 72%
CMY	0.2078, 0.2981, 0.2784
CMYK	0.00, 0.11, 0.09, 0.21
HSL	347°, 18%, 75%
HSV	347°, 11%, 79%
XYZ	49.1322, 48.2561, 52.0784
YIQ	186.4470, 12.1030, 6.4310

# Conversions

## Conversions Part 2

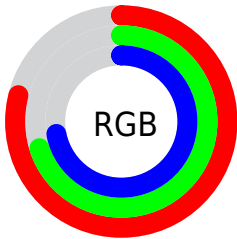
Format	Color
R <sub>Y</sub> B	202, 179, 184
Decimal	13284280
CIE Lab	74.99, 9.10, 0.46
CIE LCh	75, 9.109, 2.916
Yxy	48.2561, 0.3287, 0.3229
Android (android.graphics.Color)	4291474360 (0xFFCAB3B8)
YUV	186.4470, -1.2064, 13.6400
Hunter-Lab	69.4666, 4.6825, 4.1775

# Details

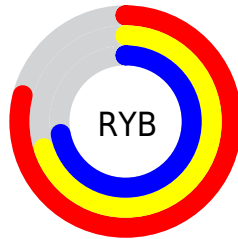
The YIQ color **186.4470, 12.1030, 6.4310** is a light color, and the websafe version is hex **CCCCCC**. A complement of this color would be **194.5530, -12.1030, -6.4310**, and the grayscale version is **186.0000, -0.0000, -0.0000**.

A 20% lighter version of the original color is **241.5500, 10.3150, 5.7950**, and **133.1480, 11.5070, 6.2190** is the 20% darker color. If you saturate the color by 10%, you get **172.8830, 22.7390, 11.9150**, and if you desaturate by 10%, it is **200.0110, 1.4670, 0.9470**.

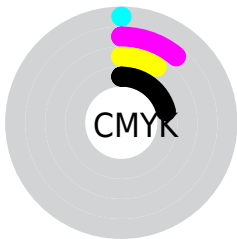
# Distribution



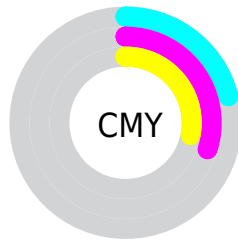
- Red (79%)
- Green (70%)
- Blue (72%)



- Red (79%)
- Yellow (70%)
- Blue (72%)



- Cyan (0%)
- Magenta (11%)
- Yellow (9%)
- Black (21%)



- Cyan (21%)
- Magenta (30%)
- Yellow (28%)

# Brightness & Saturation Gradients

These gradients show how the YIQ color 186.4470, 12.1030, 6.4310 changes by changing the brightness by 10 percent. The first figure shows a shift by +10% for each color and the second figure -10%.

Similar to the brightness gradients but the following saturation gradients show a change of the YIQ color 186.4470, 12.1030, 6.4310 by changing the saturation by 10% instead.



■ 186.4470, 12.1030,  
6.4310

■ 186.4470, 12.1030,  
6.4310

255.0000, -0.0000,  
-0.0000

■ 159.4470, 12.1030,  
6.4310

■ 241.5500, 10.3150,  
5.7950

■ 133.1480, 11.5070,  
6.2190

■ 107.8490, 10.9110,  
6.0070

■ 83.5500, 10.3150,  
5.7950

■ 60.2510, 9.7190,  
5.5830

■ 38.5390, 8.8480,  
4.8480

■ 17.2510, 9.7190,

5.5830

0.0000, 0.0000,  
0.0000

186.4470, 12.1030,  
6.4310

186.4470, 12.1030,  
6.4310

172.8830, 22.7390,  
11.9150

200.0110, 1.4670,  
0.9470

159.3190, 33.3750,  
17.3990

213.5750, -9.1690,  
-4.5370

145.2820, 43.9650,  
23.7170

227.6120,  
-19.7590, -10.8550

131.7180, 54.6010,  
29.2010

238.2410,  
-29.0200, -13.7240

118.1540, 65.2370,  
34.6850

239.1530,  
-31.5880, -11.2360

■ 104.5900, 75.8730,  
40.1690

■ 91.0260, 86.5090,  
45.6530

■ 76.9890, 97.0990,  
51.9710

■ 65.4140, 106.2680,  
56.5080

# Harmonies

## Analogous

The Analogous color harmony consists of three colors that are next to each other on the color wheel.



186.4510, 6.2800, 7.3360



186.4470, 12.1030, 6.4310



186.4210, 14.9920, 3.6320

# Triad

The Triadic color harmony groups three colors that are evenly spaced from another and form a triangle on the color wheel.



186.4470, 12.1030, 6.4310



183.2680, 1.8810, -6.5590



183.2740, -15.4510, -0.8190

# Complementary

The Complementary color scheme is a pair of colors which are on the opposite of each other on the color wheel.



186.4470, 12.1030, 6.4310



194.5530, -12.1030, -6.4310

# Split Complementary

Split-complementary colors differ from the complementary color scheme. The scheme consists of three colors, the original color and two neighbors of the complement color.



181.9810, -16.1840, -4.0560



186.4470, 12.1030, 6.4310



182.5490, -6.2800, -7.3360

# Square

The Square scheme is like the rectangle color scheme, but the four colors are evenly spaced on the color wheel.



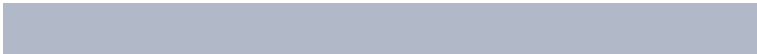
186.4470, 12.1030, 6.4310



184.2690, 9.3080, -3.4920



182.2540, -12.6990, -6.6430



184.4320, -9.9040, 3.2800



# Rectangle

The Rectangle color scheme consists of four colors that form a rectangle on the color wheel.



186.4470, 12.1030, 6.4310



185.6550, 14.2130, 1.2290



182.2540, -12.6990, -6.6430



182.5620, -16.3220, -1.5540

# Sweetspot

The Sweet Spot groups the original color and five complimentary colors.



186.4470, 12.1030, 6.4310



249.6200, 4.1260, 2.3180



187.0040, 3.3450, 10.9690



124.0220, 2.9340, 1.8940



0.0000, 0.0000, 0.0000



128.0000, -0.0000, -0.0000



# Same Dimension

The Same Dimension uses a secret algorithm to generate beautiful new colors.



186.4470, 12.1030, 6.4310



230.6760, 18.8880, 10.1200



189.3990, 12.0580, 1.7380



95.2180, 5.3180, 2.7420



53.7380, 87.3800, 46.3880



12.2740, 20.0800, 10.5440



# Inverse Universe

The Inverse Universe completely reimagines the original color for something new.



186.4470, 12.1030, 6.4310



230.6760, 18.8880, 10.1200



191.6010, -12.0580, -1.7380



95.2180, 5.3180, 2.7420



53.7380, 87.3800, 46.3880



12.2740, 20.0800, 10.5440



# Previews

## White Background



This preview shows how the YIQ color 186.4470, 12.1030, 6.4310 looks on a white background.

## Color Contrast Check

Large Text (above 18pt) WCAG AA × Fail

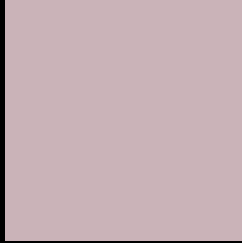
Any Text WCAG AA × Fail

Large Text (above 18pt) WCAG AAA × Fail

Any Text WCAG AAA × Fail



# Black Background



This preview shows how the YIQ color 186.4470, 12.1030, 6.4310 looks on a black background.

## Color Contrast Check

Large Text (above 18pt) WCAG AA ✓ Pass

Any Text WCAG AA ✓ Pass

Large Text (above 18pt) WCAG AAA ✓ Pass

Any Text WCAG AAA ✓ Pass

If you want to check with other color combinations, try the [Color Contrast Checker](#).

# YIQ 186.4470, 12.1030, 6.4310

## Background



This preview shows how black text looks on a background with the YIQ color 186.4470, 12.1030, 6.4310.



This preview shows how white text looks on a background with the YIQ color 186.4470, 12.1030,



# Color Blindness Simulation

Color vision deficiency is a very complex topic, and I could not describe the different causes any better than Wikipedia does, so if you want to learn more, you should check out their [article about color blindness](#).

## Dichromacy



### Original Color

186.4470, 12.1030, 6.4310

### Protanopia

185.2390, 0.8250, 1.5690

### Deuteranopia

186.7460, 12.6990, 6.6430



## Tritanopia

187.0710, 10.4060, 9.6540

# Trichromacy



## Original Color

186.4470, 12.1030, 6.4310

## Protanomaly

185.4460, 4.6760, 3.3640

## Deuteranomaly

186.7460, 12.6990, 6.6430

## Tritanomaly

186.7290, 11.3690, 8.7210

# Monochromacy



## Original Color

186.4470, 12.1030, 6.4310

## Achromatopsia

186.0000, -0.0000, -0.0000

## Achromatomaly

185.9190, 4.7220, 2.5300

# CSS Examples

## Text

The CSS property to change the color of the text to YIQ 186.4470, 12.1030, 6.4310 is called "color". The color property can be set on classes, ids or directly on the HTML element.

This example shows how text in the color `rgb(202, 179, 184)` looks like.

```
.text, #text, p{  
    color:rgb(202, 179, 184)  
}
```

If you want to add a text shadow in that color use the text-shadow property, you can generate a text shadow directly with our [CSS Text Shadow Generator](#).

Here you see how black text with a 4 pixel rgb(202, 179, 184) colored shadow looks like.

```
.shadow{ text-shadow: 4px 4px 2px rgb(202, 179, 184) }
```

## Border

The CSS property to change the border of an element to YIQ 186.4470, 12.1030, 6.4310 is called "border". The border property can be set on classes, ids or directly on the HTML element.

This example shows the color as border, it can be applied via the CSS property "border" or "border-color".

```
.border, #border, table{ border:4px solid rgb(202, 179, 184) }
```



If only the border color should be changed use the property `border-color`.

```
.border{ border-color:rgb(202, 179, 184) }
```

If you want to add a box shadow in that color use:

Here you see how a box with a 4 pixel `rgb(202, 179, 184)` colored shadow looks like.

```
.boxshadow{ -moz-box-shadow:4px 4px 4px  
4px rgb(202, 179, 184); -webkit-box-  
shadow:4px 4px 4px 4px rgb(202, 179, 184);  
box-shadow:4px 4px 4px 4px rgb(202, 179,  
184) }
```

# Background

The CSS property to change the background color of an element to YIQ 186.4470, 12.1030, 6.4310 is called "background". The background property can be set on classes, ids or directly on the HTML element.

```
.background, #background, body{  
background: rgb(202, 179, 184) }
```

If only the background color should be changed can be used:

```
.background{ background-color: rgb(202,  
179, 184) }
```

This example shows the color as background, it is applied via the CSS property "background".

To optimize and compress your CSS code, you can use our [online CSS compressor and optimizer](#) based on csstidy. If you want to create a linear or radial gradient as background or border, check our [CSS Gradient Generator](#).

Hey! You found this booklet interesting? Support Converting Colors with the new Membership Option!

The pro membership hides all ads, plus gives you double the colors in the color bucket, and more awesome pro features!

**[Learn more, Memberships starting at \\$2.50/m!](#)**

**Follow me  
on Twitter!**

@ConvertingColor