

Converting Colors

YIQ(186.4750, 14.9000, 5.3000)

Have a look what the booklet for
YIQ(186.4750, 14.9000, 5.3000)
contains.

YIQ(186.4750, 14.9000, 5.3000)	3
<i>Conversions</i>	4
<i>Details</i>	6
<i>Harmonies</i>	12
<i>Previews</i>	24
<i>Color Blindness Simulation</i>	28
<i>CSS Examples</i>	31

Color

**YIQ(186.4750, 14.9000,
5.3000)**

Conversions

Conversions Part 1

Format	Color
Hex	CCB3B3
RGB	204, 179, 179
RGB Percent	80%, 70%, 70%
CMY	0.1999, 0.2981, 0.2980
CMYK	0.00, 0.12, 0.12, 0.20
HSL	360°, 20%, 75%
HSV	360°, 12%, 80%
XYZ	49.1622, 48.3308, 49.3935
YIQ	186.4750, 14.9000, 5.3000

Conversions

Conversions Part 2

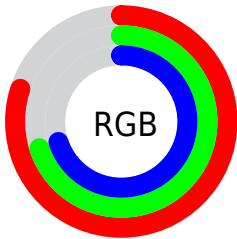
Format	Color
RYB	204, 179, 179
Decimal	13415347
CIELab	75.03, 8.98, 3.28
CIElCh	75, 9.557, 20.072
Yxy	48.3308, 0.3347, 0.3290
Android (android.graphics.Color)	4291605427 (0xFFCCB3B3)
YUV	186.4750, -3.6852, 15.3694
Hunter-Lab	69.5203, 4.5680, 6.5393

Details

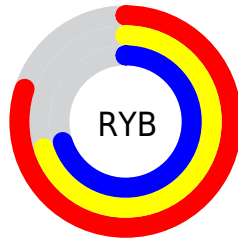
The YIQ color **186.4750, 14.9000, 5.3000** is a light color, and the websafe version is hex **CCCCCC**. A complement of this color would be **196.5250, -14.9000, -5.3000**, and the grayscale version is **187.0000, -0.0000, -0.0000**.

A 20% lighter version of the original color is **240.9800, 11.9200, 4.2400**, and **133.1760, 14.3040, 5.0880** is the 20% darker color. If you saturate the color by 10%, you get **172.4550, 26.8200, 9.5400**, and if you desaturate by 10%, it is **200.4950, 2.9800, 1.0600**.

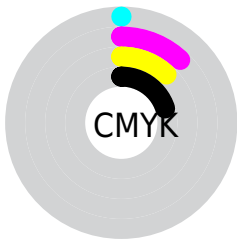
Distribution



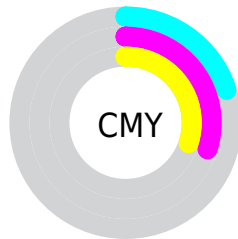
- Red (80%)
- Green (70%)
- Blue (70%)



- Red (80%)
- Yellow (70%)
- Blue (70%)



- Cyan (0%)
- Magenta (12%)
- Yellow (12%)
- Black (20%)



- Cyan (20%)
- Magenta (30%)
- Yellow (30%)

Brightness & Saturation Gradients

These gradients show how the YIQ color 186.4750, 14.9000, 5.3000 changes by changing the brightness by 10 percent. The first figure shows a shift by +10% for each color and the second figure -10%.

Similar to the brightness gradients but the following saturation gradients show a change of the YIQ color 186.4750, 14.9000, 5.3000 by changing the saturation by 10% instead.

■ 186.4750, 14.9000,
5.3000

■ 186.4750, 14.9000,
5.3000

255.0000, -0.0000,
-0.0000

■ 159.1760, 14.3040,
5.0880

■ 240.9800, 11.9200,
4.2400

■ 133.1760, 14.3040,
5.0880

■ 107.8770, 13.7080,
4.8760

■ 83.5780, 13.1120,
4.6640

■ 60.0940, 11.5990,
4.5510

■ 38.3820, 10.7280,
3.8160

■ 16.9800, 11.9200,

4.2400

■ 0.0000, 0.0000,
0.0000

■ 186.4750, 14.9000,
5.3000

■ 186.4750, 14.9000,
5.3000

■ 172.4550, 26.8200,
9.5400

■ 200.4950, 2.9800,
1.0600

■ 157.7340, 39.3360,
13.9920

■ 215.2160, -9.5360,
-3.3920

■ 143.7140, 51.2560,
18.2320

■ 229.2360,
-21.4560, -7.6320

■ 128.9930, 63.7720,
22.6840

■ 239.7510,
-30.3960, -10.8120

■ 114.9730, 75.6920,
26.9240

■ 100.9530, 87.6120,
31.1640

■ 86.2320, 100.1280,
35.6160

■ 72.2120, 112.0480,
39.8560

■ 60.9960, 121.5840,
43.2480

Harmonies

Analogous

The Analogous color harmony consists of three colors that are next to each other on the color wheel.



186.6040, 10.2230, 7.4630



186.4750, 14.9000, 5.3000



185.6660, 15.6800, 2.1760

Triad

The Triadic color harmony groups three colors that are evenly spaced from another and form a triangle on the color wheel.



186.4750, 14.9000, 5.3000



182.4030, -2.9330, -7.4210



183.6380, -13.4800, 2.0080

Complementary

The Complementary color scheme is a pair of colors which are on the opposite of each other on the color wheel.



186.4750, 14.9000, 5.3000



196.5250, -14.9000, -5.3000

Split Complementary

Split-complementary colors differ from the complementary color scheme. The scheme consists of three colors, the original color and two neighbors of the complement color.



182.8500, -17.1930, -2.2890



186.4750, 14.9000, 5.3000



182.0970, -10.8190, -7.6750

Square

The Square scheme is like the rectangle color scheme, but the four colors are evenly spaced on the color wheel.



186.4750, 14.9000, 5.3000



183.9480, 5.7780, -5.5980



181.9270, -16.0920, -5.7240



185.0520, -5.7780, 5.5980

Rectangle

The Rectangle color scheme consists of four colors that form a rectangle on the color wheel.



186.4750, 14.9000, 5.3000



185.1880, 14.0300, -0.9620



181.9270, -16.0920, -5.7240



183.2140, -15.2220, 0.5380

Sweetspot

The Sweet Spot groups the original color and five complimentary colors.



186.4750, 14.9000, 5.3000



247.9900, 5.9600, 2.1200



189.3250, 6.8750, 13.0750



123.0930, 4.1720, 1.4840



0.0000, 0.0000, 0.0000



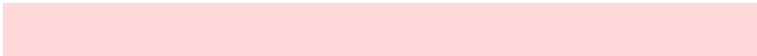
128.0000, -0.0000, -0.0000

Same Dimension

The Same Dimension uses a secret algorithm to generate beautiful new colors.



186.4750, 14.9000, 5.3000



228.3620, 22.6480, 8.0560



193.5190, 11.6000, -0.9760



94.9900, 5.9600, 2.1200



49.6340, 98.9360, 35.1920



11.3620, 22.6480, 8.0560

Inverse Universe

The Inverse Universe completely reimagines the original color for something new.



186.4750, 14.9000, 5.3000



228.3620, 22.6480, 8.0560



189.4810, -11.6000, 0.9760



94.9900, 5.9600, 2.1200



49.6340, 98.9360, 35.1920



11.3620, 22.6480, 8.0560

Previews

White Background



This preview shows how the YIQ color 186.4750, 14.9000, 5.3000 looks on a white background.

Color Contrast Check

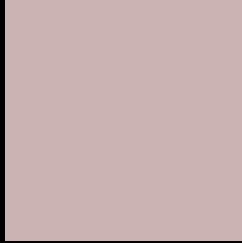
Large Text (above 18pt) WCAG AA × Fail

Any Text WCAG AA × Fail

Large Text (above 18pt) WCAG AAA × Fail

Any Text WCAG AAA × Fail

Black Background



This preview shows how the YIQ color 186.4750, 14.9000, 5.3000 looks on a black background.

Color Contrast Check

Large Text (above 18pt) WCAG AA ✓ Pass

Any Text WCAG AA ✓ Pass

Large Text (above 18pt) WCAG AAA ✓ Pass

Any Text WCAG AAA ✓ Pass

If you want to check with other color combinations, try the [Color Contrast Checker](#).

YIQ 186.4750, 14.9000, 5.3000

Background



This preview shows how black text looks on a background with the YIQ color 186.4750, 14.9000, 5.3000.



This preview shows how white text looks on a background with the YIQ color 186.4750, 14.9000,

5.3000.

Color Blindness Simulation

Color vision deficiency is a very complex topic, and I could not describe the different causes any better than Wikipedia does, so if you want to learn more, you should check out their [article about color blindness](#).

Dichromacy



Original Color

186.4750, 14.9000, 5.3000

Protanopia

185.2670, 3.6220, 0.4380

Deuteranopia

186.7740, 15.4960, 5.5120



Tritanopia

187.2670, 12.7900, 10.5020

Trichromacy



Original Color

186.4750, 14.9000, 5.3000

Protanomaly

185.4740, 7.4730, 2.2330

Deuteranomaly

186.7740, 15.4960, 5.5120

Tritanomaly

187.0990, 13.2030, 8.5230

Monochromacy



Original Color

186.4750, 14.9000, 5.3000

Achromatopsia

186.0000, -0.0000, -0.0000

Achromatomaly

185.9900, 5.9600, 2.1200

CSS Examples

Text

The CSS property to change the color of the text to YIQ 186.4750, 14.9000, 5.3000 is called "color". The color property can be set on classes, ids or directly on the HTML element.

This example shows how text in the color `rgb(204, 179, 179)` looks like.

```
.text, #text, p{  
    color:rgb(204, 179, 179)  
}
```

If you want to add a text shadow in that color use the text-shadow property, you can generate a text shadow directly with our [CSS Text Shadow Generator](#).

Here you see how black text with a 4 pixel rgb(204, 179, 179) colored shadow looks like.

```
.shadow{ text-shadow: 4px 4px 2px rgb(204, 179, 179) }
```

Border

The CSS property to change the border of an element to YIQ 186.4750, 14.9000, 5.3000 is called "border". The border property can be set on classes, ids or directly on the HTML element.

This example shows the color as border, it can be applied via the CSS property "border" or "border-color".

```
.border, #border, table{ border:4px solid rgb(204, 179, 179) }
```


If only the border color should be changed use the property `border-color`.

```
.border{ border-color:rgb(204, 179, 179) }
```

If you want to add a box shadow in that color use:

Here you see how a box with a 4 pixel `rgb(204, 179, 179)` colored shadow looks like.

```
.boxshadow{ -moz-box-shadow:4px 4px 4px  
4px rgb(204, 179, 179); -webkit-box-  
shadow:4px 4px 4px 4px rgb(204, 179, 179);  
box-shadow:4px 4px 4px 4px rgb(204, 179,  
179) }
```

Background

The CSS property to change the background color of an element to YIQ 186.4750, 14.9000, 5.3000 is called "background". The background property can be set on classes, ids or directly on the HTML element.

```
.background, #background, body{  
background: rgb(204, 179, 179) }
```

If only the background color should be changed can be used:

```
.background{ background-color: rgb(204,  
179, 179) }
```

This example shows the color as background, it is applied via the CSS property "background".

To optimize and compress your CSS code, you can use our [online CSS compressor and optimizer](#) based on csstidy. If you want to create a linear or radial gradient as background or border, check our [CSS Gradient Generator](#).

Hey! You found this booklet interesting? Support Converting Colors with the new Membership Option!

The pro membership hides all ads, plus gives you double the colors in the color bucket, and more awesome pro features!

[Learn more, Memberships starting at \\$2.50/m!](#)

**Follow me
on Twitter!**

@ConvertingColor