

Converting Colors

YIQ(186.7530, 19.9890, 6.6850)

Have a look what the booklet for
YIQ(186.7530, 19.9890, 6.6850)
contains.

YIQ(186.7530, 19.9890, 6.6850)	3
<i>Conversions</i>	4
<i>Details</i>	6
<i>Harmonies</i>	12
<i>Previews</i>	24
<i>Color Blindness Simulation</i>	28
<i>CSS Examples</i>	31

Color

**YIQ(186.7530, 19.9890,
6.6850)**

Conversions

Conversions Part 1

Format	Color
Hex	D2B1B0
RGB	210, 177, 176
RGB Percent	82%, 69%, 69%
CMY	0.1764, 0.3059, 0.3097
CMYK	0.00, 0.16, 0.16, 0.18
HSL	2°, 27%, 76%
HSV	2°, 16%, 82%
XYZ	50.1419, 48.2788, 47.7609
YIQ	186.7530, 19.9890, 6.6850

Conversions

Conversions Part 2

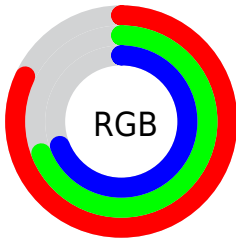
Format	Color
R _Y B	210, 177, 176
Decimal	13808048
CIE Lab	75.00, 11.77, 4.94
CIE LCh	75, 12.759, 22.758
Yxy	48.2788, 0.3430, 0.3303
Android (android.graphics.Color)	4291998128 (0xFFD2B1B0)
YUV	186.7530, -5.3012, 20.3876
Hunter-Lab	69.4829, 7.2183, 7.8835

Details

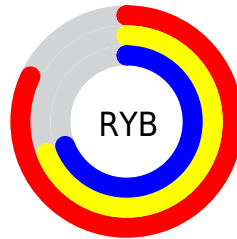
The YIQ color **186.7530, 19.9890, 6.6850** is a light color, and the websafe version is hex **CC9999**. A complement of this color would be **199.2470, -19.9890, -6.6850**, and the grayscale version is **187.0000, -0.0000, -0.0000**.

A 20% lighter version of the original color is **239.4640, 13.4330, 4.3530**, and **133.2690, 18.4760, 6.5720** is the 20% darker color. If you saturate the color by 10%, you get **172.6190, 32.2300, 10.6140**, and if you desaturate by 10%, it is **200.8870, 7.7480, 2.7560**.

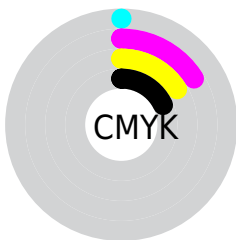
Distribution



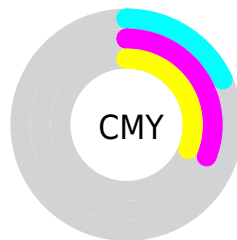
- Red (82%)
- Green (69%)
- Blue (69%)



- Red (82%)
- Yellow (69%)
- Blue (69%)



- Cyan (0%)
- Magenta (16%)
- Yellow (16%)
- Black (18%)



- Cyan (18%)
- Magenta (31%)
- Yellow (31%)

Brightness & Saturation Gradients

These gradients show how the YIQ color 186.7530, 19.9890, 6.6850 changes by changing the brightness by 10 percent. The first figure shows a shift by +10% for each color and the second figure -10%.

Similar to the brightness gradients but the following saturation gradients show a change of the YIQ color 186.7530, 19.9890, 6.6850 by changing the saturation by 10% instead.

■ 186.7530, 19.9890,
6.6850

■ 186.7530, 19.9890,
6.6850

255.0000, -0.0000,
-0.0000

■ 159.4540, 19.3930,
6.4730

■ 239.4640, 13.4330,
4.3530

■ 133.2690, 18.4760,
6.5720

■ 107.9700, 17.8800,
6.3600

■ 83.3720, 16.6880,
5.9360

■ 60.6600, 15.8170,
5.2010

■ 38.1760, 14.3040,
5.0880

■ 16.5460, 16.1380,

4.8900

■ 0.0000, 0.0000,
0.0000

■ 186.7530, 19.9890,
6.6850

■ 186.7530, 19.9890,
6.6850

■ 172.6190, 32.2300,
10.6140

■ 200.8870, 7.7480,
2.7560

■ 157.8980, 44.7460,
15.0660

■ 215.6080, -4.7680,
-1.6960

■ 143.7640, 56.9870,
18.9950

■ 229.7420,
-17.0090, -5.6250

■ 129.0430, 69.5030,
23.4470

■ 241.5450,
-26.8200, -9.5400

■ 114.9090, 81.7440,
27.3760

■ 100.7750, 93.9850,
31.3050

■ 86.0540, 106.5010,
35.7570

■ 71.9200, 118.7420,
39.6860

■ 66.3120, 123.5100,
41.3820

Harmonies

Analogous

The Analogous color harmony consists of three colors that are next to each other on the color wheel.



187.2240, 14.3490, 9.7810



186.7530, 19.9890, 6.6850



185.5910, 20.2650, 1.6810

Triad

The Triadic color harmony groups three colors that are evenly spaced from another and form a triangle on the color wheel.



186.7530, 19.9890, 6.6850



182.0390, -4.9040, -10.2480



184.0120, -17.4690, 2.7150

Complementary

The Complementary color scheme is a pair of colors which are on the opposite of each other on the color wheel.



186.7530, 19.9890, 6.6850



199.2470, -19.9890, -6.6850

Split Complementary

Split-complementary colors differ from the complementary color scheme. The scheme consists of three colors, the original color and two neighbors of the complement color.



181.9140, -23.2450, -2.7410



186.7530, 19.9890, 6.6850



180.5910, -15.2660, -9.6820

Square

The Square scheme is like the rectangle color scheme, but the four colors are evenly spaced on the color wheel.



186.7530, 19.9890, 6.6850



183.3670, 5.9160, -8.1000



180.4640, -22.0980, -7.0100



185.6220, -7.3830, 7.1530

Rectangle

The Rectangle color scheme consists of four colors that form a rectangle on the color wheel.



186.7530, 19.9890, 6.6850



185.5150, 17.4230, -1.8810



180.4640, -22.0980, -7.0100



183.2890, -19.8070, 1.0330

Sweetspot

The Sweet Spot groups the original color and five complimentary colors.



186.7530, 19.9890, 6.6850



246.4740, 7.4730, 2.2330



189.9280, 9.6710, 17.4710



122.3920, 4.7680, 1.6960



0.0000, 0.0000, 0.0000



128.0000, -0.0000, -0.0000

Same Dimension

The Same Dimension uses a secret algorithm to generate beautiful new colors.



186.7530, 19.9890, 6.6850



221.9390, 28.3330, 9.6530



196.7320, 15.3140, -2.2060



97.2890, 6.5560, 2.3320



53.1670, 98.7530, 33.0010



12.8460, 24.1610, 8.1690

Inverse Universe

The Inverse Universe completely reimagines the original color for something new.



199.2470, -19.9890, -6.6850



240.0610, -28.3330, -9.6530



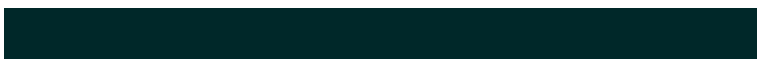
189.2680, -15.3140, 2.2060



101.1240, -6.2810, -1.8090



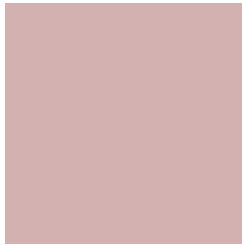
115.4200, -99.0280, -33.5240



28.1540, -24.1610, -8.1690

Previews

White Background



This preview shows how the YIQ color 186.7530, 19.9890, 6.6850 looks on a white background.

Color Contrast Check

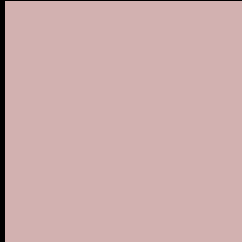
Large Text (above 18pt) WCAG AA × Fail

Any Text WCAG AA × Fail

Large Text (above 18pt) WCAG AAA × Fail

Any Text WCAG AAA × Fail

Black Background



This preview shows how the YIQ color 186.7530, 19.9890, 6.6850 looks on a black background.

Color Contrast Check

Large Text (above 18pt) WCAG AA ✓ Pass

Any Text WCAG AA ✓ Pass

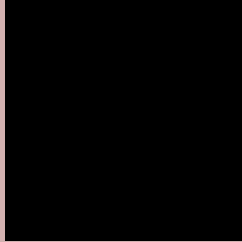
Large Text (above 18pt) WCAG AAA ✓ Pass

Any Text WCAG AAA ✓ Pass

If you want to check with other color combinations, try the [Color Contrast Checker](#).

YIQ 186.7530, 19.9890, 6.6850

Background



This preview shows how black text looks on a background with the YIQ color 186.7530, 19.9890, 6.6850.



This preview shows how white text looks on a background with the YIQ color 186.7530, 19.9890,

6.6850.

Color Blindness Simulation

Color vision deficiency is a very complex topic, and I could not describe the different causes any better than Wikipedia does, so if you want to learn more, you should check out their [article about color blindness](#).

Dichromacy



Original Color

186.7530, 19.9890, 6.6850

Protanopia

185.0390, 4.2640, -0.1840

Deuteranopia

186.7310, 17.0550, 4.7910



Tritanopia

187.6590, 17.5580, 12.1980

Trichromacy



Original Color

186.7530, 19.9890, 6.6850

Protanomaly

185.5560, 10.1780, 2.7700

Deuteranomaly

186.4430, 17.9260, 5.5260

Tritanomaly

187.3770, 18.2920, 9.9080

Monochromacy



Original Color

186.7530, 19.9890, 6.6850

Achromatopsia

187.0000, -0.0000, -0.0000

Achromatomaly

186.5880, 7.1520, 2.5440

CSS Examples

Text

The CSS property to change the color of the text to YIQ 186.7530, 19.9890, 6.6850 is called "color". The color property can be set on classes, ids or directly on the HTML element.

This example shows how text in the color `rgb(210, 177, 176)` looks like.

```
.text, #text, p{  
    color:rgb(210, 177, 176)  
}
```

If you want to add a text shadow in that color use the text-shadow property, you can generate a text shadow directly with our [CSS Text Shadow Generator](#).

Here you see how black text with a 4 pixel rgb(210, 177, 176) colored shadow looks like.

```
.shadow{ text-shadow: 4px 4px 2px rgb(210, 177, 176) }
```

Border

The CSS property to change the border of an element to YIQ 186.7530, 19.9890, 6.6850 is called "border". The border property can be set on classes, ids or directly on the HTML element.

This example shows the color as border, it can be applied via the CSS property "border" or "border-color".

```
.border, #border, table{ border:4px solid rgb(210, 177, 176) }
```


If only the border color should be changed use the property `border-color`.

```
.border{ border-color:rgb(210, 177, 176) }
```

If you want to add a box shadow in that color use:

Here you see how a box with a 4 pixel `rgb(210, 177, 176)` colored shadow looks like.

```
.boxshadow{ -moz-box-shadow:4px 4px 4px  
4px rgb(210, 177, 176); -webkit-box-  
shadow:4px 4px 4px 4px rgb(210, 177, 176);  
box-shadow:4px 4px 4px 4px rgb(210, 177,  
176) }
```

Background

The CSS property to change the background color of an element to YIQ 186.7530, 19.9890, 6.6850 is called "background". The background property can be set on classes, ids or directly on the HTML element.

```
.background, #background, body{  
background: rgb(210, 177, 176) }
```

If only the background color should be changed can be used:

```
.background{ background-color: rgb(210,  
177, 176) }
```

This example shows the color as background, it is applied via the CSS property "background".

To optimize and compress your CSS code, you can use our [online CSS compressor and optimizer](#) based on csstidy. If you want to create a linear or radial gradient as background or border, check our [CSS Gradient Generator](#).

Hey! You found this booklet interesting? Support Converting Colors with the new Membership Option!

The pro membership hides all ads, plus gives you double the colors in the color bucket, and more awesome pro features!

[Learn more, Memberships starting at \\$2.50/m!](#)

**Follow me
on Twitter!**

@ConvertingColor