

Converting Colors

YIQ(186.9320, 21.0430, 9.6110)

Have a look what the booklet for
YIQ(186.9320, 21.0430, 9.6110)
contains.

YIQ(186.9320, 21.0430, 9.6110)	3
<i>Conversions</i>	4
<i>Details</i>	6
<i>Harmonies</i>	12
<i>Previews</i>	24
<i>Color Blindness Simulation</i>	28
<i>CSS Examples</i>	31

Color

**YIQ(186.9320, 21.0430,
9.6110)**

Conversions

Conversions Part 1

Format	Color
Hex	D5AFB4
RGB	213, 175, 180
RGB Percent	84%, 69%, 71%
CMY	0.1646, 0.3138, 0.2940
CMYK	0.00, 0.18, 0.15, 0.16
HSL	352°, 31%, 76%
HSV	352°, 18%, 84%
XYZ	51.0146, 48.0995, 49.7862
YIQ	186.9320, 21.0430, 9.6110

Conversions

Conversions Part 2

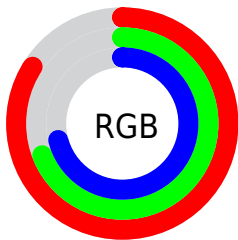
Format	Color
RYB	213, 175, 180
Decimal	14004148
CIELab	74.89, 14.58, 2.62
CIElCh	75, 14.816, 10.197
Yxy	48.0995, 0.3426, 0.3230
Android (android.graphics.Color)	4292194228 (0xFFD5AFB4)
YUV	186.9320, -3.4175, 22.8616
Hunter-Lab	69.3538, 9.9301, 5.9859

Details

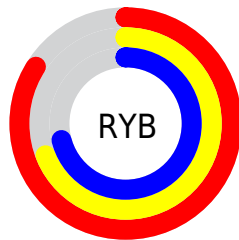
The YIQ color **186.9320, 21.0430, 9.6110** is a light color, and the websafe version is hex **CC9999**. A complement of this color would be **201.0680, -21.0430, -9.6110**, and the grayscale version is **187.0000, -0.0000, -0.0000**.

A 20% lighter version of the original color is **238.7460, 12.6990, 6.6430**, and **133.3340, 19.8510, 9.1870** is the 20% darker color. If you saturate the color by 10%, you get **172.5530, 32.5960, 14.9960**, and if you desaturate by 10%, it is **201.4250, 9.1690, 4.5370**.

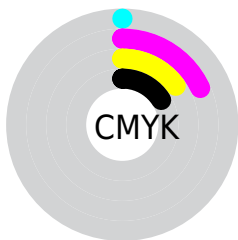
Distribution



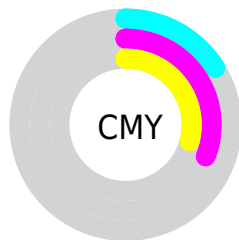
- Red (84%)
- Green (69%)
- Blue (71%)



- Red (84%)
- Yellow (69%)
- Blue (71%)



- Cyan (0%)
- Magenta (18%)
- Yellow (15%)
- Black (16%)





- Cyan (16%)
- Magenta (31%)
- Yellow (29%)

Brightness & Saturation Gradients


These gradients show how the YIQ color 186.9320, 21.0430, 9.6110 changes by changing the brightness by 10 percent. The first figure shows a shift by +10% for each color and the second figure -10%.

Similar to the brightness gradients but the following saturation gradients show a change of the YIQ color 186.9320, 21.0430, 9.6110 by changing the saturation by 10% instead.


 186.9320, 21.0430,
9.6110


 186.9320, 21.0430,
9.6110


255.0000, -0.0000,
-0.0000


 159.6330, 20.4470,
9.3990


 238.7460, 12.6990,
6.6430

 133.3340, 19.8510,
9.1870

 107.7360, 18.6590,
8.7630

 83.4370, 18.0630,
8.5510

 60.5400, 16.2750,
7.9150

 37.9420, 15.0830,
7.4910

 15.6540, 15.9540,

8.2260

■ 0.0000, 0.0000,
0.0000

■ 186.9320, 21.0430,
9.6110

■ 186.9320, 21.0430,
9.6110

■ 172.5530, 32.5960,
14.9960

■ 201.4250, 9.1690,
4.5370

■ 157.4730, 44.7450,
20.5930

■ 216.3910, -2.6590,
-1.3710

■ 143.0940, 56.2980,
25.9780

■ 230.7700,
-14.2120, -6.7560

■ 128.6010, 68.1720,
31.0520

■ 242.3280,
-24.7110, -9.2150

■ 113.6350, 80.0000,
36.9600

■ 242.4420,
-25.0320, -8.9040

■ 99.1420, 91.8740,
42.0340

■ 84.7630, 103.4270,
47.4190

■ 70.2700, 115.3010,
52.4930

■ 66.8790, 117.9600,
53.8640

Harmonies

Analogous

The Analogous color harmony consists of three colors that are next to each other on the color wheel.



187.0220, 12.1020, 11.9580



186.9320, 21.0430, 9.6110



186.3250, 24.0700, 4.3100

Triad

The Triadic color harmony groups three colors that are evenly spaced from another and form a triangle on the color wheel.



186.9320, 21.0430, 9.6110



181.8500, 0.0020, -11.0540



181.8370, -24.3460, 0.6940

Complementary

The Complementary color scheme is a pair of colors which are on the opposite of each other on the color wheel.



186.9320, 21.0430, 9.6110



201.0680, -21.0430, -9.6110

Split Complementary

Split-complementary colors differ from the complementary color scheme. The scheme consists of three colors, the original color and two neighbors of the complement color.



179.8810, -27.6460, -5.5820



186.9320, 21.0430, 9.6110



180.4940, -13.6150, -12.0710

Square

The Square scheme is like the rectangle color scheme, but the four colors are evenly spaced on the color wheel.



186.9320, 21.0430, 9.6110



183.4170, 11.6470, -7.3370



179.3990, -23.4730, -9.6250



184.3870, -14.0310, 6.4890

Rectangle

The Rectangle color scheme consists of four colors that form a rectangle on the color wheel.



186.9320, 21.0430, 9.6110



185.3200, 22.4660, 0.3380



179.3990, -23.4730, -9.6250



180.8860, -26.0420, -1.6100

Sweetspot

The Sweet Spot groups the original color and five complimentary colors.



186.9320, 21.0430, 9.6110



246.1150, 7.1060, 3.3780



189.1990, 7.4700, 18.8140



122.5060, 4.4470, 2.0070



0.0000, 0.0000, 0.0000



128.0000, -0.0000, -0.0000

Same Dimension

The Same Dimension uses a secret algorithm to generate beautiful new colors.



186.9320, 21.0430, 9.6110



218.0580, 29.6160, 13.9360



194.5800, 18.7980, 0.7340



99.5170, 5.9140, 2.9540



53.7510, 94.5330, 43.4050



13.5410, 23.7020, 10.9820

Inverse Universe

The Inverse Universe completely reimagines the original color for something new.



186.9320, 21.0430, 9.6110



218.0580, 29.6160, 13.9360



193.4200, -18.7980, -0.7340



99.5170, 5.9140, 2.9540



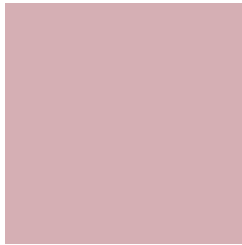
53.7510, 94.5330, 43.4050



13.5410, 23.7020, 10.9820

Previews

White Background



This preview shows how the YIQ color 186.9320, 21.0430, 9.6110 looks on a white background.

Color Contrast Check

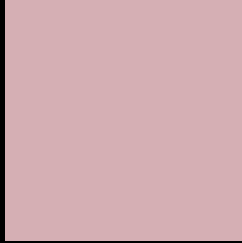
Large Text (above 18pt) WCAG AA × Fail

Any Text WCAG AA × Fail

Large Text (above 18pt) WCAG AAA × Fail

Any Text WCAG AAA × Fail

Black Background



This preview shows how the YIQ color 186.9320, 21.0430, 9.6110 looks on a black background.

Color Contrast Check

Large Text (above 18pt) WCAG AA ✓ Pass

Any Text WCAG AA ✓ Pass

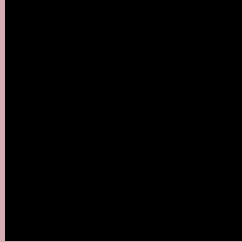
Large Text (above 18pt) WCAG AAA ✓ Pass

Any Text WCAG AAA ✓ Pass

If you want to check with other color combinations, try the [Color Contrast Checker](#).

YIQ 186.9320, 21.0430, 9.6110

Background



This preview shows how black text looks on a background with the YIQ color 186.9320, 21.0430, 9.6110.



This preview shows how white text looks on a background with the YIQ color 186.9320, 21.0430,

Color Blindness Simulation

Color vision deficiency is a very complex topic, and I could not describe the different causes any better than Wikipedia does, so if you want to learn more, you should check out their [article about color blindness](#).

Dichromacy



Original Color

186.9320, 21.0430, 9.6110

Protanopia

185.3100, 2.0630, 1.1590

Deuteranopia

185.8880, 15.1750, 5.8230



Tritanopia

187.4420, 19.6670, 12.5230

Trichromacy



Original Color

186.9320, 21.0430, 9.6110

Protanomaly

186.0120, 8.8940, 4.0140

Deuteranomaly

186.1980, 17.2380, 6.9820

Tritanomaly

187.1000, 20.6300, 11.5900

Monochromacy



Original Color

186.9320, 21.0430, 9.6110

Achromatopsia

187.0000, -0.0000, -0.0000

Achromatomaly

187.0010, 7.4270, 3.0670

CSS Examples

Text

The CSS property to change the color of the text to YIQ 186.9320, 21.0430, 9.6110 is called "color". The color property can be set on classes, ids or directly on the HTML element.

This example shows how text in the color `rgb(213, 175, 180)` looks like.

```
.text, #text, p{  
    color:rgb(213, 175, 180)  
}
```

If you want to add a text shadow in that color use the text-shadow property, you can generate a text shadow directly with our [CSS Text Shadow Generator](#).

Here you see how black text with a 4 pixel rgb(213, 175, 180) colored shadow looks like.

```
.shadow{ text-shadow: 4px 4px 2px rgb(213, 175, 180) }
```

Border

The CSS property to change the border of an element to YIQ 186.9320, 21.0430, 9.6110 is called "border". The border property can be set on classes, ids or directly on the HTML element.

This example shows the color as border, it can be applied via the CSS property "border" or "border-color".

```
.border, #border, table{ border:4px solid rgb(213, 175, 180) }
```


If only the border color should be changed use the property `border-color`.

```
.border{ border-color:rgb(213, 175, 180) }
```

If you want to add a box shadow in that color use:

Here you see how a box with a 4 pixel `rgb(213, 175, 180)` colored shadow looks like.

```
.boxshadow{ -moz-box-shadow:4px 4px 4px  
4px rgb(213, 175, 180); -webkit-box-  
shadow:4px 4px 4px 4px rgb(213, 175, 180);  
box-shadow:4px 4px 4px 4px rgb(213, 175,  
180) }
```

Background

The CSS property to change the background color of an element to YIQ 186.9320, 21.0430, 9.6110 is called "background". The background property can be set on classes, ids or directly on the HTML element.

```
.background, #background, body{  
background: rgb(213, 175, 180) }
```

If only the background color should be changed can be used:

```
.background{ background-color: rgb(213,  
175, 180) }
```

This example shows the color as background, it is applied via the CSS property "background".

To optimize and compress your CSS code, you can use our [online CSS compressor and optimizer](#) based on csstidy. If you want to create a linear or radial gradient as background or border, check our [CSS Gradient Generator](#).

Hey! You found this booklet interesting? Support Converting Colors with the new Membership Option!

The pro membership hides all ads, plus gives you double the colors in the color bucket, and more awesome pro features!

[Learn more, Memberships starting at \\$2.50/m!](#)

**Follow me
on Twitter!**

@ConvertingColor