

Converting Colors

YIQ(186.9530, 16.5500, 8.4380)

Have a look what the booklet for
YIQ(186.9530, 16.5500, 8.4380)
contains.

YIQ(186.9530, 16.5500, 8.4380)	3
<i>Conversions</i>	4
<i>Details</i>	6
<i>Harmonies</i>	12
<i>Previews</i>	24
<i>Color Blindness Simulation</i>	28
<i>CSS Examples</i>	31

Color

**YIQ(186.9530, 16.5500,
8.4380)**

Conversions

Conversions Part 1

Format	Color
Hex	D0B1B7
RGB	208, 177, 183
RGB Percent	82%, 69%, 72%
CMY	0.1842, 0.3059, 0.2823
CMYK	0.00, 0.15, 0.12, 0.18
HSL	348°, 25%, 75%
HSV	348°, 15%, 82%
XYZ	50.2864, 48.2714, 51.4752
YIQ	186.9530, 16.5500, 8.4380

Conversions

Conversions Part 2

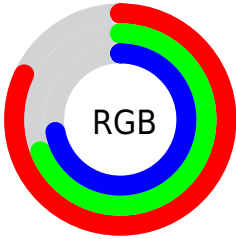
Format	Color
R _Y B	208, 177, 183
Decimal	13676983
CIE Lab	75.00, 12.17, 1.09
CIE LCh	75, 12.222, 5.099
Yxy	48.2714, 0.3352, 0.3217
Android (android.graphics.Color)	4291867063 (0xFFD0B1B7)
YUV	186.9530, -1.9488, 18.4582
Hunter-Lab	69.4777, 7.6085, 4.7071

Details

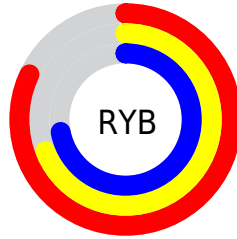
The YIQ color **186.9530, 16.5500, 8.4380** is a light color, and the websafe version is hex **CC9999**. A complement of this color would be **198.0470, -16.5500, -8.4380**, and the grayscale version is **187.0000, -0.0000, -0.0000**.

A 20% lighter version of the original color is **240.2620, 11.1860, 6.5300**, and **133.3550, 15.3580, 8.0140** is the 20% darker color. If you saturate the color by 10%, you get **172.6880, 27.7820, 14.1340**, and if you desaturate by 10%, it is **201.2180, 5.3180, 2.7420**.

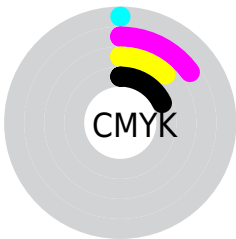
Distribution



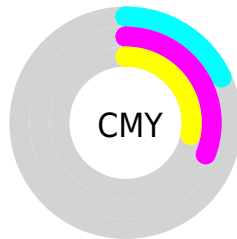
- Red (82%)
- Green (69%)
- Blue (72%)



- Red (82%)
- Yellow (69%)
- Blue (72%)



- Cyan (0%)
- Magenta (15%)
- Yellow (12%)
- Black (18%)



- Cyan (18%)
- Magenta (31%)
- Yellow (28%)

Brightness & Saturation Gradients

These gradients show how the YIQ color 186.9530, 16.5500, 8.4380 changes by changing the brightness by 10 percent. The first figure shows a shift by +10% for each color and the second figure -10%.

Similar to the brightness gradients but the following saturation gradients show a change of the YIQ color 186.9530, 16.5500, 8.4380 by changing the saturation by 10% instead.

■ 186.9530, 16.5500,
8.4380

■ 186.9530, 16.5500,
8.4380

255.0000, -0.0000,
-0.0000

■ 159.6540, 15.9540,
8.2260

■ 240.2620, 11.1860,
6.5300

■ 133.3550, 15.3580,
8.0140

■ 108.0560, 14.7620,
7.8020

■ 83.7570, 14.1660,
7.5900

■ 61.0450, 13.2950,
6.8550

■ 38.4470, 12.1030,
6.4310

■ 16.8600, 12.3780,

6.9540

■ 0.0000, 0.0000,
0.0000

■ 186.9530, 16.5500,
8.4380

■ 186.9530, 16.5500,
8.4380

■ 172.6880, 27.7820,
14.1340

■ 201.2180, 5.3180,
2.7420

■ 158.4230, 39.0140,
19.8300

■ 215.4830, -5.9140,
-2.9540

■ 144.8590, 49.6500,
25.3140

■ 229.0470,
-16.5500, -8.4380

■ 130.5940, 60.8820,
31.0100

■ 240.3770,
-26.4070, -11.5190

■ 116.3290, 72.1140,
36.7060

■ 240.9470,
-28.0120, -9.9640

■ 102.0640, 83.3460,
42.4020

■ 87.9130, 94.2570,
48.4090

■ 74.2350, 105.2140,
53.5820

■ 66.7520, 111.1280,
56.5360

Harmonies

Analogous

The Analogous color harmony consists of three colors that are next to each other on the color wheel.



186.7010, 8.5720, 9.8520



186.9530, 16.5500, 8.4380



186.2860, 19.8060, 4.4940

Triad

The Triadic color harmony groups three colors that are evenly spaced from another and form a triangle on the color wheel.



186.9530, 16.5500, 8.4380



182.8010, 1.6980, -8.7500



182.4630, -20.3570, -0.0130

Complementary

The Complementary color scheme is a pair of colors which are on the opposite of each other on the color wheel.



186.9530, 16.5500, 8.4380



198.0470, -16.5500, -8.4380

Split Complementary

Split-complementary colors differ from the complementary color scheme. The scheme consists of three colors, the original color and two neighbors of the complement color.



181.5180, -22.1900, -5.3420



186.9530, 16.5500, 8.4380



181.4130, -8.8930, -9.5410

Square

The Square scheme is like the rectangle color scheme, but the four colors are evenly spaced on the color wheel.



186.9530, 16.5500, 8.4380



183.8840, 11.8300, -5.1460



180.5630, -18.0630, -8.5510



184.5180, -13.0220, 4.7220

Rectangle

The Rectangle color scheme consists of four colors that form a rectangle on the color wheel.



186.9530, 16.5500, 8.4380



185.9930, 19.0730, 1.2570



180.5630, -18.0630, -8.5510



181.9250, -21.7780, -1.7940

Sweetspot

The Sweet Spot groups the original color and five complimentary colors.



186.9530, 16.5500, 8.4380



248.2180, 5.3180, 2.7420



188.0090, 4.9490, 14.9410



123.2070, 3.8510, 1.7950



0.0000, 0.0000, 0.0000



128.0000, -0.0000, -0.0000

Same Dimension

The Same Dimension uses a secret algorithm to generate beautiful new colors.



186.9530, 16.5500, 8.4380



223.7800, 24.5270, 12.5510



191.5520, 16.0010, 1.8650



97.5170, 5.9140, 2.9540



53.9940, 89.5350, 45.8790



13.1710, 21.8680, 11.1800

Inverse Universe

The Inverse Universe completely reimagines the original color for something new.



186.9530, 16.5500, 8.4380



223.7800, 24.5270, 12.5510



193.4480, -16.0010, -1.8650



97.5170, 5.9140, 2.9540



53.9940, 89.5350, 45.8790



13.1710, 21.8680, 11.1800

Previews

White Background



This preview shows how the YIQ color 186.9530, 16.5500, 8.4380 looks on a white background.

Color Contrast Check

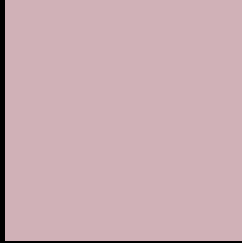
Large Text (above 18pt) WCAG AA × Fail

Any Text WCAG AA × Fail

Large Text (above 18pt) WCAG AAA × Fail

Any Text WCAG AAA × Fail

Black Background



This preview shows how the YIQ color 186.9530, 16.5500, 8.4380 looks on a black background.

Color Contrast Check

Large Text (above 18pt) WCAG AA ✓ Pass

Any Text WCAG AA ✓ Pass

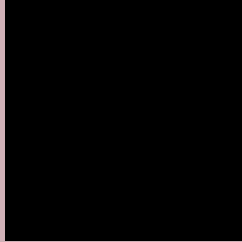
Large Text (above 18pt) WCAG AAA ✓ Pass

Any Text WCAG AAA ✓ Pass

If you want to check with other color combinations, try the [Color Contrast Checker](#).

YIQ 186.9530, 16.5500, 8.4380

Background



This preview shows how black text looks on a background with the YIQ color 186.9530, 16.5500, 8.4380.



This preview shows how white text looks on a background with the YIQ color 186.9530, 16.5500,

8.4380.

Color Blindness Simulation

Color vision deficiency is a very complex topic, and I could not describe the different causes any better than Wikipedia does, so if you want to learn more, you should check out their [article about color blindness](#).

Dichromacy



Original Color

186.9530, 16.5500, 8.4380

Protanopia

185.2390, 0.8250, 1.5690

Deuteranopia

186.6320, 13.0200, 6.3320



Tritanopia

187.4630, 15.1740, 11.3500

Trichromacy



Original Color

186.9530, 16.5500, 8.4380

Protanomaly

185.7560, 6.7390, 4.5230

Deuteranomaly

186.6430, 14.4870, 7.2790

Tritanomaly

187.1210, 16.1370, 10.4170

Monochromacy



Original Color

186.9530, 16.5500, 8.4380

Achromatopsia

187.0000, -0.0000, -0.0000

Achromatomaly

186.9300, 6.1890, 3.4770

CSS Examples

Text

The CSS property to change the color of the text to YIQ 186.9530, 16.5500, 8.4380 is called "color". The color property can be set on classes, ids or directly on the HTML element.

This example shows how text in the color `rgb(208, 177, 183)` looks like.

```
.text, #text, p{  
    color:rgb(208, 177, 183)  
}
```

If you want to add a text shadow in that color use the text-shadow property, you can generate a text shadow directly with our [CSS Text Shadow Generator](#).

Here you see how black text with a 4 pixel rgb(208, 177, 183) colored shadow looks like.

```
.shadow{ text-shadow: 4px 4px 2px rgb(208, 177, 183) }
```

Border

The CSS property to change the border of an element to YIQ 186.9530, 16.5500, 8.4380 is called "border". The border property can be set on classes, ids or directly on the HTML element.

This example shows the color as border, it can be applied via the CSS property "border" or "border-color".

```
.border, #border, table{ border:4px solid rgb(208, 177, 183) }
```


If only the border color should be changed use the property border-color.

```
.border{ border-color:rgb(208, 177, 183) }
```

If you want to add a box shadow in that color use:

Here you see how a box with a 4 pixel rgb(208, 177, 183) colored shadow looks like.

```
.boxshadow{ -moz-box-shadow:4px 4px 4px  
4px rgb(208, 177, 183); -webkit-box-  
shadow:4px 4px 4px 4px rgb(208, 177, 183);  
box-shadow:4px 4px 4px 4px rgb(208, 177,  
183) }
```

Background

The CSS property to change the background color of an element to YIQ 186.9530, 16.5500, 8.4380 is called "background". The background property can be set on classes, ids or directly on the HTML element.

```
.background, #background, body{  
background: rgb(208, 177, 183) }
```

If only the background color should be changed can be used:

```
.background{ background-color: rgb(208,  
177, 183) }
```

This example shows the color as background, it is applied via the CSS property "background".

To optimize and compress your CSS code, you can use our [online CSS compressor and optimizer](#) based on csstidy. If you want to create a linear or radial gradient as background or border, check our [CSS Gradient Generator](#).

Hey! You found this booklet interesting? Support Converting Colors with the new Membership Option!

The pro membership hides all ads, plus gives you double the colors in the color bucket, and more awesome pro features!

[Learn more, Memberships starting at \\$2.50/m!](#)

**Follow me
on Twitter!**

@ConvertingColor