

Converting Colors

YIQ(187.0060, 9.0310, 7.0390)

Have a look what the booklet for
YIQ(187.0060, 9.0310, 7.0390)
contains.

YIQ(187.0060, 9.0310, 7.0390)	3
<i>Conversions</i>	4
<i>Details</i>	6
<i>Harmonies</i>	12
<i>Previews</i>	24
<i>Color Blindness Simulation</i>	28
<i>CSS Examples</i>	31

Color

**YIQ(187.0060, 9.0310,
7.0390)**

Conversions

Conversions Part 1

Format	Color
Hex	C8B4BD
RGB	200, 180, 189
RGB Percent	78%, 71%, 74%
CMY	0.2156, 0.2941, 0.2588
CMYK	0.00, 0.10, 0.06, 0.22
HSL	333°, 15%, 75%
HSV	333°, 10%, 78%
XYZ	49.3287, 48.5948, 54.9281
YIQ	187.0060, 9.0310, 7.0390

Conversions

Conversions Part 2

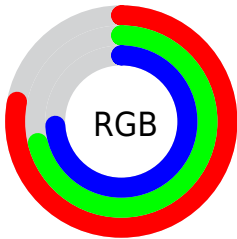
Format	Color
R _Y B	200, 180, 189
Decimal	13153469
CIE Lab	75.20, 8.72, -1.97
CIE LCh	75, 8.936, 347.246
Yxy	48.5948, 0.3227, 0.3179
Android (android.graphics.Color)	4291343549 (0xFFC8B4BD)
YUV	187.0060, 0.9830, 11.3957
Hunter-Lab	69.7100, 4.3191, 2.0793

Details

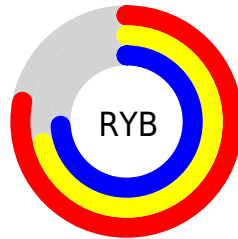
The YIQ color $187.0060, 9.0310, 7.0390$ is a light color, and the websafe version is hex `CCCCCC`. A complement of this color would be $192.9940, -9.0310, -7.0390$, and the grayscale version is $187.0000, -0.0000, -0.0000$.

A 20% lighter version of the original color is $242.7070, 8.4350, 6.8270$, and $133.7070, 8.4350, 6.8270$ is the 20% darker color. If you saturate the color by 10%, you get $174.0120, 18.0620, 14.0780$, and if you desaturate by 10%, it is $200.0000, -0.0000, -0.0000$.

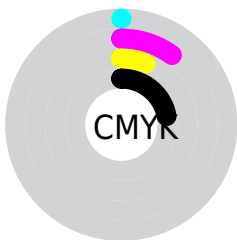
Distribution



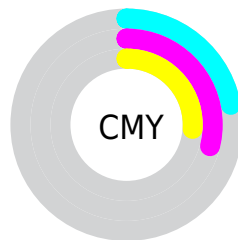
- Red (78%)
- Green (71%)
- Blue (74%)



- Red (78%)
- Yellow (71%)
- Blue (74%)



- Cyan (0%)
- Magenta (10%)
- Yellow (6%)
- Black (22%)



- Cyan (22%)
- Magenta (29%)
- Yellow (26%)

Brightness & Saturation Gradients

These gradients show how the YIQ color 187.0060, 9.0310, 7.0390 changes by changing the brightness by 10 percent. The first figure shows a shift by +10% for each color and the second figure -10%.

Similar to the brightness gradients but the following saturation gradients show a change of the YIQ color 187.0060, 9.0310, 7.0390 by changing the saturation by 10% instead.

■ 187.0060, 9.0310,
7.0390

■ 187.0060, 9.0310,
7.0390

255.0000, -0.0000,
-0.0000

■ 160.0060, 9.0310,
7.0390

■ 242.7070, 8.4350,
6.8270

■ 133.7070, 8.4350,
6.8270

■ 108.2940, 8.1600,
6.3040

■ 83.9950, 7.5640,
6.0920

■ 60.9950, 7.5640,
6.0920

■ 39.2830, 6.6930,
5.3570

■ 18.1090, 7.2430,

6.4030

0.0000, 0.0000,
0.0000

187.0060, 9.0310,
7.0390

187.0060, 9.0310,
7.0390

174.0120, 18.0620,
14.0780

200.0000, -0.0000,
-0.0000

161.0180, 27.0930,
21.1170

212.9940, -9.0310,
-7.0390

148.0240, 36.1240,
28.1560

225.9880,
-18.0620, -14.0780

135.0300, 45.1550,
35.1950

236.0470,
-25.7180, -18.5020

122.0360, 54.1860,
42.2340

237.3010,
-29.2490, -15.0810

■ 109.0420, 63.2170,
49.2730

■ 238.5550,
-32.7800, -11.6600

■ 96.0480, 72.2480,
56.3120

■ 83.0540, 81.2790,
63.3510

■ 70.0600, 90.3100,
70.3900

Harmonies

Analogous

The Analogous color harmony consists of three colors that are next to each other on the color wheel.



186.8850, 2.0620, 6.6860



187.0060, 9.0310, 7.0390



186.9910, 13.3870, 5.1870

Triad

The Triadic color harmony groups three colors that are evenly spaced from another and form a triangle on the color wheel.



187.0060, 9.0310, 7.0390



184.3610, 6.0530, -5.0750



183.0350, -16.2760, -2.3880

Complementary

The Complementary color scheme is a pair of colors which are on the opposite of each other on the color wheel.



187.0060, 9.0310, 7.0390



192.9940, -9.0310, -7.0390

Split Complementary

Split-complementary colors differ from the complementary color scheme. The scheme consists of three colors, the original color and two neighbors of the complement color.



182.5250, -14.9000, -5.3000



187.0060, 9.0310, 7.0390



183.1150, -2.0620, -6.6860

Square

The Square scheme is like the rectangle color scheme, but the four colors are evenly spaced on the color wheel.



187.0060, 9.0310, 7.0390



185.2910, 12.2420, -1.5980



182.6950, -9.6270, -7.2510



184.4100, -12.8380, 1.3860

Rectangle

The Rectangle color scheme consists of four colors that form a rectangle on the color wheel.



187.0060, 9.0310, 7.0390



186.4210, 14.9920, 3.6320



182.6950, -9.6270, -7.2510



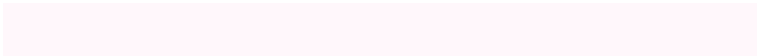
183.0950, -16.5050, -3.7450

Sweetspot

The Sweet Spot groups the original color and five complimentary colors.



187.0060, 9.0310, 7.0390



249.8480, 3.4840, 2.9400



185.5690, 0.1360, 8.5520



124.1360, 2.6130, 2.2050



0.0000, 0.0000, 0.0000



128.0000, -0.0000, -0.0000

Same Dimension

The Same Dimension uses a secret algorithm to generate beautiful new colors.



187.0060, 9.0310, 7.0390



234.8650, 13.9820, 10.9260



186.5670, 11.6450, 3.7170



93.1470, 4.0800, 3.1520



57.0590, 73.7150, 57.2590



12.5880, 16.3200, 12.6080

Inverse Universe

The Inverse Universe completely reimagines the original color for something new.



187.0060, 9.0310, 7.0390



234.8650, 13.9820, 10.9260



193.4330, -11.6450, -3.7170



93.1470, 4.0800, 3.1520



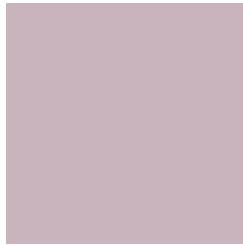
57.0590, 73.7150, 57.2590



12.5880, 16.3200, 12.6080

Previews

White Background



This preview shows how the YIQ color 187.0060, 9.0310, 7.0390 looks on a white background.

Color Contrast Check

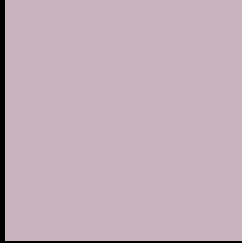
Large Text (above 18pt) WCAG AA × Fail

Any Text WCAG AA × Fail

Large Text (above 18pt) WCAG AAA × Fail

Any Text WCAG AAA × Fail

Black Background



This preview shows how the YIQ color 187.0060, 9.0310, 7.0390 looks on a black background.

Color Contrast Check

Large Text (above 18pt) WCAG AA ✓ Pass

Any Text WCAG AA ✓ Pass

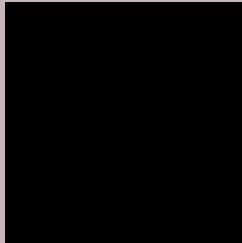
Large Text (above 18pt) WCAG AAA ✓ Pass

Any Text WCAG AAA ✓ Pass

If you want to check with other color combinations, try the [Color Contrast Checker](#).

YIQ 187.0060, 9.0310, 7.0390

Background



This preview shows how black text looks on a background with the YIQ color 187.0060, 9.0310, 7.0390.



This preview shows how white text looks on a background with the YIQ color 187.0060, 9.0310,

Color Blindness Simulation

Color vision deficiency is a very complex topic, and I could not describe the different causes any better than Wikipedia does, so if you want to learn more, you should check out their [article about color blindness](#).

Dichromacy



Original Color

187.0060, 9.0310, 7.0390

Protanopia

185.6950, -0.4590, 2.8130

Deuteranopia

187.3050, 9.6270, 7.2510



Tritanopia

187.1740, 8.6180, 9.0180

Trichromacy



Original Color

187.0060, 9.0310, 7.0390

Protanomaly

186.4890, 3.1170, 4.0850

Deuteranomaly

187.3050, 9.6270, 7.2510

Tritanomaly

187.0600, 8.9390, 8.7070

Monochromacy



Original Color

187.0060, 9.0310, 7.0390

Achromatopsia

187.0000, -0.0000, -0.0000

Achromatomaly

186.8480, 3.4840, 2.9400

CSS Examples

Text

The CSS property to change the color of the text to YIQ 187.0060, 9.0310, 7.0390 is called "color". The color property can be set on classes, ids or directly on the HTML element.

This example shows how text in the color `rgb(200, 180, 189)` looks like.

```
.text, #text, p{  
    color:rgb(200, 180, 189)  
}
```

If you want to add a text shadow in that color use the text-shadow property, you can generate a text shadow directly with our [CSS Text Shadow Generator](#).

Here you see how black text with a 4 pixel rgb(200, 180, 189) colored shadow looks like.

```
.shadow{ text-shadow: 4px 4px 2px rgb(200, 180, 189) }
```

Border

The CSS property to change the border of an element to YIQ 187.0060, 9.0310, 7.0390 is called "border". The border property can be set on classes, ids or directly on the HTML element.

This example shows the color as border, it can be applied via the CSS property "border" or "border-color".

```
.border, #border, table{ border:4px solid rgb(200, 180, 189) }
```


If only the border color should be changed use the property border-color.

```
.border{ border-color:rgb(200, 180, 189) }
```

If you want to add a box shadow in that color use:

Here you see how a box with a 4 pixel rgb(200, 180, 189) colored shadow looks like.

```
.boxshadow{ -moz-box-shadow:4px 4px 4px  
4px rgb(200, 180, 189); -webkit-box-  
shadow:4px 4px 4px 4px rgb(200, 180, 189);  
box-shadow:4px 4px 4px 4px rgb(200, 180,  
189) }
```

Background

The CSS property to change the background color of an element to YIQ 187.0060, 9.0310, 7.0390 is called "background". The background property can be set on classes, ids or directly on the HTML element.

```
.background, #background, body{  
background: rgb(200, 180, 189) }
```

If only the background color should be changed can be used:

```
.background{ background-color: rgb(200,  
180, 189) }
```

This example shows the color as background, it is applied via the CSS property "background".

To optimize and compress your CSS code, you can use our [online CSS compressor and optimizer](#) based on csstidy. If you want to create a linear or radial gradient as background or border, check our [CSS Gradient Generator](#).

Hey! You found this booklet interesting? Support Converting Colors with the new Membership Option!

The pro membership hides all ads, plus gives you double the colors in the color bucket, and more awesome pro features!

[Learn more, Memberships starting at \\$2.50/m!](#)

**Follow me
on Twitter!**

@ConvertingColor