

Converting Colors

YIQ(187.1220, 14.3960, 3.4200)

Have a look what the booklet for
YIQ(187.1220, 14.3960, 3.4200)
contains.

YIQ(187.1220, 14.3960, 3.4200)	3
<i>Conversions</i>	4
<i>Details</i>	6
<i>Harmonies</i>	12
<i>Previews</i>	24
<i>Color Blindness Simulation</i>	28
<i>CSS Examples</i>	31

Color

**YIQ(187.1220, 14.3960,
3.4200)**

Conversions

Conversions Part 1

Format	Color
Hex	CBB5B1
RGB	203, 181, 177
RGB Percent	80%, 71%, 69%
CMY	0.2039, 0.2902, 0.3058
CMYK	0.00, 0.11, 0.13, 0.20
HSL	9°, 20%, 75%
HSV	9°, 13%, 80%
XYZ	49.0914, 48.9172, 48.4576
YIQ	187.1220, 14.3960, 3.4200

Conversions

Conversions Part 2

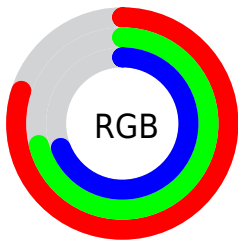
Format	Color
R_{YB}	203, 182, 177
Decimal	13350321
CIE Lab	75.40, 7.20, 4.89
CIE LCh	75, 8.705, 34.166
Yxy	48.9172, 0.3352, 0.3340
Android (android.graphics.Color)	4291540401 (0xFFCBB5B1)
YUV	187.1220, -4.9901, 13.9250
Hunter-Lab	69.9408, 2.8925, 7.8803

Details

The YIQ color **187.1220, 14.3960, 3.4200** is a light color, and the websafe version is hex **CCCCCC**. A complement of this color would be **192.8780, -14.3960, -3.4200**, and the grayscale version is **187.0000, -0.0000, -0.0000**.

A 20% lighter version of the original color is **241.9260, 12.0120, 2.5720**, and **133.8230, 13.8000, 3.2080** is the 20% darker color. If you saturate the color by 10%, you get **174.8630, 25.4910, 6.0910**, and if you desaturate by 10%, it is **199.3810, 3.3010, 0.7490**.

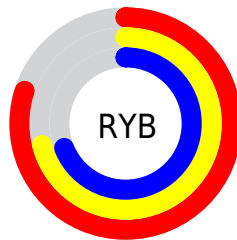
Distribution



Red (80%)

Green (71%)

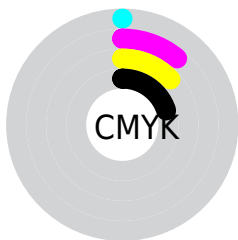
Blue (69%)



Red (80%)

Yellow (71%)

Blue (69%)

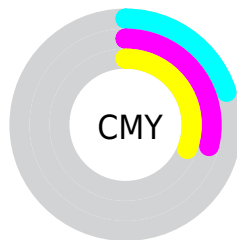


Cyan (0%)

Magenta (11%)

Yellow (13%)

Black (20%)



Cyan (20%)

Magenta (29%)

Yellow (31%)

Brightness & Saturation Gradients

These gradients show how the YIQ color 187.1220, 14.3960, 3.4200 changes by changing the brightness by 10 percent. The first figure shows a shift by +10% for each color and the second figure -10%.

Similar to the brightness gradients but the following saturation gradients show a change of the YIQ color 187.1220, 14.3960, 3.4200 by changing the saturation by 10% instead.

■ 187.1220, 14.3960,
3.4200

■ 187.1220, 14.3960,
3.4200

255.0000, -0.0000,
-0.0000

■ 159.8230, 13.8000,
3.2080

■ 241.9260, 12.0120,
2.5720

■ 133.9370, 13.4790,
3.5190

■ 108.6380, 12.8830,
3.3070

■ 84.3390, 12.2870,
3.0950

■ 61.0400, 11.6910,
2.8830

■ 39.4420, 10.4990,
2.4590

■ 17.8120, 12.3330,

2.2610

■ 0.0000, 0.0000,
0.0000

■ 187.1220, 14.3960,
3.4200

■ 187.1220, 14.3960,
3.4200

■ 174.8630, 25.4910,
6.0910

■ 199.3810, 3.3010,
0.7490

■ 162.4900, 36.9070,
8.4510

■ 211.7540, -8.1150,
-1.6110

■ 149.6440, 48.2770,
11.6450

■ 224.6000,
-19.4850, -4.8050

■ 137.3850, 59.3720,
14.3160

■ 236.5170,
-29.6170, -8.4090

■ 125.1260, 70.4670,
16.9870

■ 239.4520,
-30.9920, -11.0240

■ 112.7530, 81.8830,
19.3470

■ 100.4940, 92.9780,
22.0180

■ 87.6480, 104.3480,
25.2120

■ 78.8940, 112.4630,
26.8230

Harmonies

Analogous

The Analogous color harmony consists of three colors that are next to each other on the color wheel.



187.4470, 12.1030, 6.4310



187.1220, 14.3960, 3.4200



186.5300, 13.0670, -0.0290

Triad

The Triadic color harmony groups three colors that are evenly spaced from another and form a triangle on the color wheel.



187.1220, 14.3960, 3.4200



183.5490, -6.2800, -7.3360



185.7310, -9.3080, 3.4920

Complementary

The Complementary color scheme is a pair of colors which are on the opposite of each other on the color wheel.



187.1220, 14.3960, 3.4200



192.8780, -14.3960, -3.4200

Split Complementary

Split-complementary colors differ from the complementary color scheme. The scheme consists of three colors, the original color and two neighbors of the complement color.



183.9860, -14.5800, -0.0840



187.1220, 14.3960, 3.4200



183.3680, -13.0200, -6.3320

Square

The Square scheme is like the rectangle color scheme, but the four colors are evenly spaced on the color wheel.



187.1220, 14.3960, 3.4200



184.3820, 1.5600, -6.2480



183.2800, -15.5880, -3.8440



186.6180, -1.5600, 6.2480

Rectangle

The Rectangle color scheme consists of four colors that form a rectangle on the color wheel.



187.1220, 14.3960, 3.4200



185.9810, 10.1790, -2.7570



183.2800, -15.5880, -3.8440



185.3070, -11.0500, 2.0220

Sweetspot

The Sweet Spot groups the original color and five complimentary colors.



187.1220, 14.3960, 3.4200



248.5770, 5.6850, 1.5970



187.2820, 8.4340, 12.3540



123.6800, 3.8970, 0.9610



0.0000, 0.0000, 0.0000



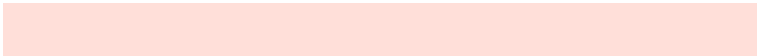
128.0000, -0.0000, -0.0000

Same Dimension

The Same Dimension uses a secret algorithm to generate beautiful new colors.



187.1220, 14.3960, 3.4200



231.8840, 20.9980, 4.9180



194.7530, 10.8210, -3.3790



95.5770, 5.6850, 1.5970



64.3090, 92.0610, 22.1170



14.8840, 20.9980, 4.9180

Inverse Universe

The Inverse Universe completely reimagines the original color for something new.



192.8780, -14.3960, -3.4200



240.1160, -20.9980, -4.9180



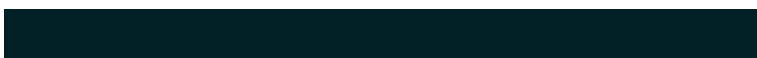
185.2470, -10.8210, 3.3790



97.8360, -5.4100, -1.0740



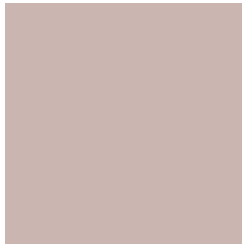
101.1040, -91.7860, -21.5940



23.1160, -20.9980, -4.9180

Previews

White Background



This preview shows how the YIQ color 187.1220, 14.3960, 3.4200 looks on a white background.

Color Contrast Check

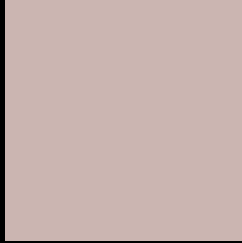
Large Text (above 18pt) WCAG AA × Fail

Any Text WCAG AA × Fail

Large Text (above 18pt) WCAG AAA × Fail

Any Text WCAG AAA × Fail

Black Background



This preview shows how the YIQ color 187.1220, 14.3960, 3.4200 looks on a black background.

Color Contrast Check

Large Text (above 18pt) WCAG AA ✓ Pass

Any Text WCAG AA ✓ Pass

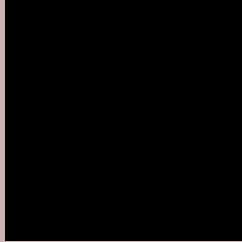
Large Text (above 18pt) WCAG AAA ✓ Pass

Any Text WCAG AAA ✓ Pass

If you want to check with other color combinations, try the [Color Contrast Checker](#).

YIQ 187.1220, 14.3960, 3.4200

Background



This preview shows how black text looks on a background with the YIQ color 187.1220, 14.3960, 3.4200.



This preview shows how white text looks on a background with the YIQ color 187.1220, 14.3960,

3.4200.

Color Blindness Simulation

Color vision deficiency is a very complex topic, and I could not describe the different causes any better than Wikipedia does, so if you want to learn more, you should check out their [article about color blindness](#).

Dichromacy



Original Color

187.1220, 14.3960, 3.4200

Protanopia

186.1100, 5.5020, -0.5940

Deuteranopia

187.7310, 17.0550, 4.7910



Tritanopia

188.3700, 11.0020, 9.8660

Trichromacy



Original Color

187.1220, 14.3960, 3.4200

Protanomaly

186.6050, 8.4820, 0.4660

Deuteranomaly

187.4320, 16.4590, 4.5790

Tritanomaly

187.9740, 12.0570, 7.2650

Monochromacy



Original Color

187.1220, 14.3960, 3.4200

Achromatopsia

187.0000, -0.0000, -0.0000

Achromatomaly

187.1640, 5.4100, 1.0740

CSS Examples

Text

The CSS property to change the color of the text to YIQ 187.1220, 14.3960, 3.4200 is called "color". The color property can be set on classes, ids or directly on the HTML element.

This example shows how text in the color `rgb(203, 181, 177)` looks like.

```
.text, #text, p{  
    color:rgb(203, 181, 177)  
}
```

If you want to add a text shadow in that color use the text-shadow property, you can generate a text shadow directly with our [CSS Text Shadow Generator](#).

Here you see how black text with a 4 pixel rgb(203, 181, 177) colored shadow looks like.

```
.shadow{ text-shadow: 4px 4px 2px rgb(203, 181, 177) }
```

Border

The CSS property to change the border of an element to YIQ 187.1220, 14.3960, 3.4200 is called "border". The border property can be set on classes, ids or directly on the HTML element.

This example shows the color as border, it can be applied via the CSS property "border" or "border-color".

```
.border, #border, table{ border:4px solid rgb(203, 181, 177) }
```


If only the border color should be changed use the property border-color.

```
.border{ border-color:rgb(203, 181, 177) }
```

If you want to add a box shadow in that color use:

Here you see how a box with a 4 pixel rgb(203, 181, 177) colored shadow looks like.

```
.boxshadow{ -moz-box-shadow:4px 4px 4px  
4px rgb(203, 181, 177); -webkit-box-  
shadow:4px 4px 4px 4px rgb(203, 181, 177);  
box-shadow:4px 4px 4px 4px rgb(203, 181,  
177) }
```

Background

The CSS property to change the background color of an element to YIQ 187.1220, 14.3960, 3.4200 is called "background". The background property can be set on classes, ids or directly on the HTML element.

```
.background, #background, body{  
background: rgb(203, 181, 177) }
```

If only the background color should be changed can be used:

```
.background{ background-color: rgb(203,  
181, 177) }
```

This example shows the color as background, it is applied via the CSS property "background".

To optimize and compress your CSS code, you can use our [online CSS compressor and optimizer](#) based on csstidy. If you want to create a linear or radial gradient as background or border, check our [CSS Gradient Generator](#).

Hey! You found this booklet interesting? Support Converting Colors with the new Membership Option!

The pro membership hides all ads, plus gives you double the colors in the color bucket, and more awesome pro features!

[Learn more, Memberships starting at \\$2.50/m!](#)

**Follow me
on Twitter!**

@ConvertingColor