

Converting Colors

YIQ(187.1880, 23.1980, 9.1020)

Have a look what the booklet for
YIQ(187.1880, 23.1980, 9.1020)
contains.

YIQ(187.1880, 23.1980, 9.1020)	3
<i>Conversions</i>	4
<i>Details</i>	6
<i>Harmonies</i>	12
<i>Previews</i>	24
<i>Color Blindness Simulation</i>	28
<i>CSS Examples</i>	31

Color

**YIQ(187.1880, 23.1980,
9.1020)**

Conversions

Conversions Part 1

Format	Color
Hex	D7AFB1
RGB	215, 175, 177
RGB Percent	84%, 69%, 69%
CMY	0.1568, 0.3138, 0.3058
CMYK	0.00, 0.19, 0.18, 0.16
HSL	357°, 33%, 76%
HSV	357°, 19%, 84%
XYZ	51.2964, 48.2794, 48.2223
YIQ	187.1880, 23.1980, 9.1020

Conversions

Conversions Part 2

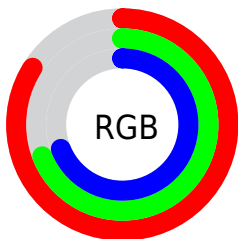
Format	Color
RYB	215, 175, 177
Decimal	14135217
CIELab	75.00, 14.84, 4.45
CIELCh	75, 15.493, 16.686
Yxy	48.2794, 0.3471, 0.3267
Android (android.graphics.Color)	4292325297 (0xFFD7AFB1)
YUV	187.1880, -5.0227, 24.3911
Hunter-Lab	69.4834, 10.1823, 7.4904

Details

The YIQ color **187.1880, 23.1980, 9.1020** is a light color, and the websafe version is hex **CC9999**. A complement of this color would be **202.8120, -23.1980, -9.1020**, and the grayscale version is **187.0000, -0.0000, -0.0000**.

A 20% lighter version of the original color is **238.4040, 13.6620, 5.7100**, and **133.5900, 22.0060, 8.6780** is the 20% darker color. If you saturate the color by 10%, you get **171.9940, 35.6680, 14.3880**, and if you desaturate by 10%, it is **201.7950, 11.0030, 4.3390**.

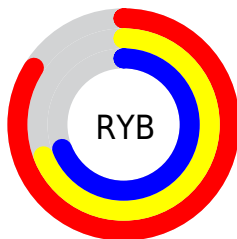
Distribution



Red (84%)

Green (69%)

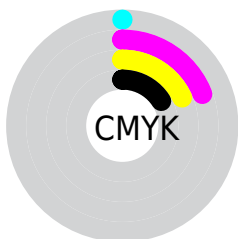
Blue (69%)



Red (84%)

Yellow (69%)

Blue (69%)

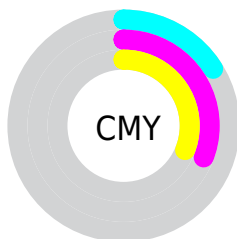


Cyan (0%)

Magenta (19%)

Yellow (18%)

Black (16%)



Cyan (16%)

Magenta (31%)

Yellow (31%)

Brightness & Saturation Gradients

These gradients show how the YIQ color 187.1880, 23.1980, 9.1020 changes by changing the brightness by 10 percent. The first figure shows a shift by +10% for each color and the second figure -10%.

Similar to the brightness gradients but the following saturation gradients show a change of the YIQ color 187.1880, 23.1980, 9.1020 by changing the saturation by 10% instead.

■ 187.1880, 23.1980,
9.1020

■ 187.1880, 23.1980,
9.1020

255.0000, -0.0000,
-0.0000

■ 159.8890, 22.6020,
8.8900

■ 238.4040, 13.6620,
5.7100

■ 133.7040, 21.6850,
8.9890

■ 108.1060, 20.4930,
8.5650

■ 83.5080, 19.3010,
8.1410

■ 60.7960, 18.4300,
7.4060

■ 38.3120, 16.9170,
7.2930

■ 15.4970, 17.8340,

7.1940

■ 0.0000, 0.0000,
0.0000

■ 187.1880, 23.1980,
9.1020

■ 187.1880, 23.1980,
9.1020

■ 171.9940, 35.6680,
14.3880

■ 201.7950, 11.0030,
4.3390

■ 157.2730, 48.1840,
18.8400

■ 217.1030, -1.7880,
-0.6360

■ 142.0790, 60.6540,
24.1260

■ 231.7100,
-13.9830, -5.3990

■ 127.3580, 73.1700,
28.5780

■ 243.0400,
-23.8400, -8.4800

■ 112.1640, 85.6400,
33.8640

■ 97.5570, 97.8350,
38.6270

■ 82.2490, 110.6260,
43.6020

■ 67.6420, 122.8210,
48.3650

■ 65.5390, 124.6090,
49.0010

Harmonies

Analogous

The Analogous color harmony consists of three colors that are next to each other on the color wheel.



187.4030, 15.4030, 12.7070



187.1880, 23.1980, 9.1020



185.9830, 25.0330, 3.3770

Triad

The Triadic color harmony groups three colors that are evenly spaced from another and form a triangle on the color wheel.



187.1880, 23.1980, 9.1020



181.4690, -3.2990, -11.8030



182.9620, -23.2000, 1.9520

Complementary

The Complementary color scheme is a pair of colors which are on the opposite of each other on the color wheel.



187.1880, 23.1980, 9.1020



202.8120, -23.1980, -9.1020

Split Complementary

Split-complementary colors differ from the complementary color scheme. The scheme consists of three colors, the original color and two neighbors of the complement color.



180.3370, -28.9300, -4.3380



187.1880, 23.1980, 9.1020



180.5260, -16.6410, -12.2970

Square

The Square scheme is like the rectangle color scheme, but the four colors are evenly spaced on the color wheel.



187.1880, 23.1980, 9.1020



183.2920, 10.5010, -8.5950



179.4310, -26.4990, -9.8510



185.1100, -11.6930, 8.1710

Rectangle

The Rectangle color scheme consists of four colors that form a rectangle on the color wheel.



187.1880, 23.1980, 9.1020



185.3800, 22.2370, -1.0190



179.4310, -26.4990, -9.8510



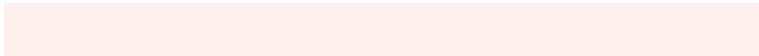
181.8260, -25.8130, -0.2530

Sweetspot

The Sweet Spot groups the original color and five complimentary colors.



187.1880, 23.1980, 9.1020



244.4850, 8.9400, 3.1800



190.6230, 9.2120, 20.2840



121.6910, 5.3640, 1.9080



0.0000, 0.0000, 0.0000



128.0000, -0.0000, -0.0000

Same Dimension

The Same Dimension uses a secret algorithm to generate beautiful new colors.



187.1880, 23.1980, 9.1020



216.0860, 32.4130, 12.8050



196.9390, 19.1650, -0.4110



99.4030, 6.2350, 2.6430



52.1550, 99.0270, 39.0510



13.0850, 24.9860, 9.7380

Inverse Universe

The Inverse Universe completely reimagines the original color for something new.



187.1880, 23.1980, 9.1020



216.0860, 32.4130, 12.8050



193.0610, -19.1650, 0.4110



99.4030, 6.2350, 2.6430



52.1550, 99.0270, 39.0510



13.0850, 24.9860, 9.7380

Previews

White Background



This preview shows how the YIQ color 187.1880, 23.1980, 9.1020 looks on a white background.

Color Contrast Check

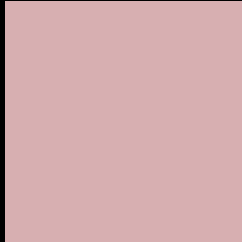
Large Text (above 18pt) WCAG AA × Fail

Any Text WCAG AA × Fail

Large Text (above 18pt) WCAG AAA × Fail

Any Text WCAG AAA × Fail

Black Background



This preview shows how the YIQ color 187.1880, 23.1980, 9.1020 looks on a black background.

Color Contrast Check

Large Text (above 18pt) WCAG AA ✓ Pass

Any Text WCAG AA ✓ Pass

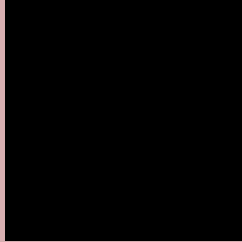
Large Text (above 18pt) WCAG AAA ✓ Pass

Any Text WCAG AAA ✓ Pass

If you want to check with other color combinations, try the [Color Contrast Checker](#).

YIQ 187.1880, 23.1980, 9.1020

Background



This preview shows how black text looks on a background with the YIQ color 187.1880, 23.1980, 9.1020.



This preview shows how white text looks on a background with the YIQ color 187.1880, 23.1980,

Color Blindness Simulation

Color vision deficiency is a very complex topic, and I could not describe the different causes any better than Wikipedia does, so if you want to learn more, you should check out their [article about color blindness](#).

Dichromacy



Original Color

187.1880, 23.1980, 9.1020

Protanopia

185.2670, 3.6220, 0.4380

Deuteranopia

186.7310, 17.0550, 4.7910



Tritanopia

187.4530, 21.1340, 13.4700

Trichromacy



Original Color

187.1880, 23.1980, 9.1020

Protanomaly

185.9690, 10.4530, 3.2930

Deuteranomaly

187.0410, 19.1180, 5.9500

Tritanomaly

187.5840, 22.1430, 11.7030

Monochromacy



Original Color

187.1880, 23.1980, 9.1020

Achromatopsia

187.0000, -0.0000, -0.0000

Achromatomaly

187.1860, 8.3440, 2.9680

CSS Examples

Text

The CSS property to change the color of the text to YIQ 187.1880, 23.1980, 9.1020 is called "color". The color property can be set on classes, ids or directly on the HTML element.

This example shows how text in the color `rgb(215, 175, 177)` looks like.

```
.text, #text, p{  
    color:rgb(215, 175, 177)  
}
```

If you want to add a text shadow in that color use the text-shadow property, you can generate a text shadow directly with our [CSS Text Shadow Generator](#).

Here you see how black text with a 4 pixel rgb(215, 175, 177) colored shadow looks like.

```
.shadow{ text-shadow: 4px 4px 2px rgb(215, 175, 177) }
```

Border

The CSS property to change the border of an element to YIQ 187.1880, 23.1980, 9.1020 is called "border". The border property can be set on classes, ids or directly on the HTML element.

This example shows the color as border, it can be applied via the CSS property "border" or "border-color".

```
.border, #border, table{ border:4px solid rgb(215, 175, 177) }
```


If only the border color should be changed use the property `border-color`.

```
.border{ border-color:rgb(215, 175, 177) }
```

If you want to add a box shadow in that color use:

Here you see how a box with a 4 pixel `rgb(215, 175, 177)` colored shadow looks like.

```
.boxshadow{ -moz-box-shadow:4px 4px 4px  
4px rgb(215, 175, 177); -webkit-box-  
shadow:4px 4px 4px 4px rgb(215, 175, 177);  
box-shadow:4px 4px 4px 4px rgb(215, 175,  
177) }
```

Background

The CSS property to change the background color of an element to YIQ 187.1880, 23.1980, 9.1020 is called "background". The background property can be set on classes, ids or directly on the HTML element.

```
.background, #background, body{  
background: rgb(215, 175, 177) }
```

If only the background color should be changed can be used:

```
.background{ background-color: rgb(215,  
175, 177) }
```

This example shows the color as background, it is applied via the CSS property "background".

To optimize and compress your CSS code, you can use our [online CSS compressor and optimizer](#) based on csstidy. If you want to create a linear or radial gradient as background or border, check our [CSS Gradient Generator](#).

Hey! You found this booklet interesting? Support Converting Colors with the new Membership Option!

The pro membership hides all ads, plus gives you double the colors in the color bucket, and more awesome pro features!

[Learn more, Memberships starting at \\$2.50/m!](#)

**Follow me
on Twitter!**

@ConvertingColor