

Converting Colors

YIQ(187.2110, 41.5860, -4.7660)

Have a look what the booklet for
YIQ(187.2110, 41.5860, -4.7660)
contains.

YIQ(187.2110, 41.5860, -4.7660)	3
<i>Conversions</i>	4
<i>Details</i>	6
<i>Harmonies</i>	12
<i>Previews</i>	24
<i>Color Blindness Simulation</i>	28
<i>CSS Examples</i>	31

Color

**YIQ(187.2110, 41.5860,
-4.7660)**

Conversions

Conversions Part 1

Format	Color
Hex	E0B385
RGB	224, 179, 133
RGB Percent	88%, 70%, 52%
CMY	0.1215, 0.2981, 0.4782
CMYK	0.00, 0.20, 0.41, 0.12
HSL	30°, 59%, 70%
HSV	30°, 41%, 88%
XYZ	51.1001, 49.7779, 29.1237
YIQ	187.2110, 41.5860, -4.7660

Conversions

Conversions Part 2

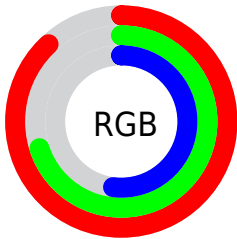
Format	Color
R_{YB}	222, 224, 133
Decimal	14726021
CIE _{Lab}	75.93, 10.30, 29.64
CIE _{LCh}	76, 31.383, 70.832
Yxy	49.7779, 0.3931, 0.3829
Android (android.graphics.Color)	4292916101 (0xFFE0B385)
YUV	187.2110, -26.7260, 32.2640
Hunter-Lab	70.5535, 5.8145, 24.9132

Details

The YIQ color **187.2110, 41.5860, -4.7660** is a light color, and the websafe version is hex **FFCC99**. A complement of this color would be **169.7890, -41.5860, 4.7660**, and the grayscale version is **187.0000, -0.0000, -0.0000**.

A 20% lighter version of the original color is **235.5080, 27.3280, -10.6880**, and **133.3570, 38.2390, -4.6810** is the 20% darker color. If you saturate the color by 10%, you get **178.2460, 51.6730, -5.8550**, and if you desaturate by 10%, it is **196.1760, 31.4990, -3.6770**.

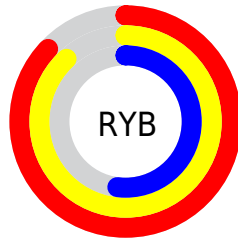
Distribution



Red (88%)

Green (70%)

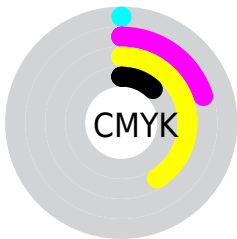
Blue (52%)



Red (87%)

Yellow (88%)

Blue (52%)

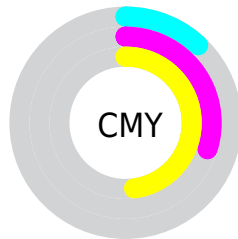


Cyan (0%)

Magenta (20%)

Yellow (41%)

Black (12%)



Cyan (12%)

Magenta (30%)

Yellow (48%)

Brightness & Saturation Gradients

These gradients show how the YIQ color 187.2110, 41.5860, -4.7660 changes by changing the brightness by 10 percent. The first figure shows a shift by +10% for each color and the second figure -10%.

Similar to the brightness gradients but the following saturation gradients show a change of the YIQ color 187.2110, 41.5860, -4.7660 by changing the saturation by 10% instead.

■ 187.2110, 41.5860,
-4.7660

■ 187.2110, 41.5860,
-4.7660

■ 255.0000, -0.0000,
-0.0000

■ 159.8410, 39.7520,
-4.5680

■ 235.5080, 27.3280,
-10.6880

■ 133.3570, 38.2390,
-4.6810

■ 250.3260, 13.1610,
-12.7510

■ 107.5740, 36.1300,
-5.0060

■ 253.6320, 3.8520,
-3.7320

■ 83.0900, 34.6170,
-5.1190

■ 59.5950, 31.6370,
-6.1790

■ 37.9090, 27.8770,
-4.1150

■ 18.1070, 18.7520,

1.5680

■ 0.0000, 0.0000,
0.0000

■ 187.2110, 41.5860,
-4.7660

■ 187.2110, 41.5860,
-4.7660

■ 178.2460, 51.6730,
-5.8550

■ 196.1760, 31.4990,
-3.6770

■ 169.1670, 62.0810,
-7.2550

■ 205.2550, 21.0910,
-2.2770

■ 160.2020, 72.1680,
-8.3440

■ 214.2200, 11.0040,
-1.1880

■ 151.1230, 82.5760,
-9.7440

■ 223.2990, 0.5960,
0.2120

■ 142.1580, 92.6630,
-10.8330

■ 232.2640, -9.4910,
1.3010

■ 133.3070,
102.4290, -11.6110

■ 240.4480,
-16.0010, -1.8650

■ 245.7310,
-18.4760, -6.5720

Harmonies

Analogous

The Analogous color harmony consists of three colors that are next to each other on the color wheel.



189.0630, 48.4150, 9.1430



187.2110, 41.5860, -4.7660



184.6660, 23.7070, -16.6530

Triad

The Triadic color harmony groups three colors that are evenly spaced from another and form a triangle on the color wheel.



187.2110, 41.5860, -4.7660



172.4160, -57.6740, -23.0660



190.9410, -0.3710, 23.2530

Complementary

The Complementary color scheme is a pair of colors which are on the opposite of each other on the color wheel.



187.2110, 41.5860, -4.7660



169.7890, -41.5860, 4.7660

Split Complementary

Split-complementary colors differ from the complementary color scheme. The scheme consists of three colors, the original color and two neighbors of the complement color.



186.3330, -31.1340, 13.5860



187.2110, 41.5860, -4.7660



172.5260, -69.3670, -14.8950

Square

The Square scheme is like the rectangle color scheme, but the four colors are evenly spaced on the color wheel.



187.2110, 41.5860, -4.7660



176.7810, -31.0810, -25.9370



178.7160, -57.6780, -0.9580



191.8810, 26.2210, 25.9090

Rectangle

The Rectangle color scheme consists of four colors that form a rectangle on the color wheel.



187.2110, 41.5860, -4.7660



182.1200, 7.5690, -21.5430



178.7160, -57.6780, -0.9580



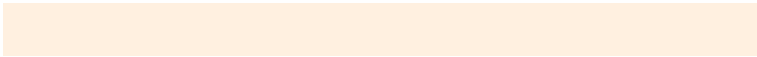
189.4990, -10.8700, 20.7940

Sweetspot

The Sweet Spot groups the original color and five complimentary colors.



187.2110, 41.5860, -4.7660



242.6610, 14.0760, -1.7960



165.4530, 39.4700, 33.5980



120.6650, 8.2530, -0.8910



0.0000, 0.0000, 0.0000



128.0000, -0.0000, -0.0000

Same Dimension

The Same Dimension uses a secret algorithm to generate beautiful new colors.



187.2110, 41.5860, -4.7660



204.3560, 57.1750, -6.4490



213.6260, 29.2110, -28.3010



107.8110, 4.9060, -0.8060



104.8670, 80.4210, -9.2350



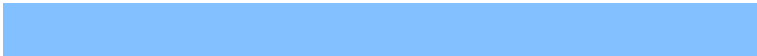
28.4400, 22.0080, -2.3760

Inverse Universe

The Inverse Universe completely reimagines the original color for something new.



169.7890, -41.5860, 4.7660



180.6440, -57.1750, 6.4490



143.3740, -29.2110, 28.3010



105.7760, -5.1810, 0.2830



71.1330, -80.4210, 9.2350



19.5600, -22.0080, 2.3760

Previews

White Background



This preview shows how the YIQ color 187.2110, 41.5860, -4.7660 looks on a white background.

Color Contrast Check

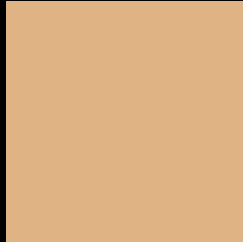
Large Text (above 18pt) WCAG AA × Fail

Any Text WCAG AA × Fail

Large Text (above 18pt) WCAG AAA × Fail

Any Text WCAG AAA × Fail

Black Background



This preview shows how the YIQ color 187.2110, 41.5860, -4.7660 looks on a black background.

Color Contrast Check

Large Text (above 18pt) WCAG AA ✓ Pass

Any Text WCAG AA ✓ Pass

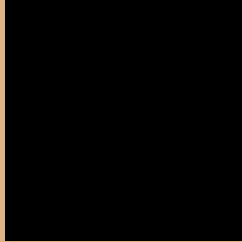
Large Text (above 18pt) WCAG AAA ✓ Pass

Any Text WCAG AAA ✓ Pass

If you want to check with other color combinations, try the [Color Contrast Checker](#).

YIQ 187.2110, 41.5860, -4.7660

Background



This preview shows how black text looks on a background with the YIQ color 187.2110, 41.5860, -4.7660.



This preview shows how white text looks on a background with the YIQ color 187.2110, 41.5860,

-4.7660.

Color Blindness Simulation

Color vision deficiency is a very complex topic, and I could not describe the different causes any better than Wikipedia does, so if you want to learn more, you should check out their [article about color blindness](#).

Dichromacy



Original Color

187.2110, 41.5860, -4.7660

Protanopia

185.4860, 24.3940, -12.5820

Deuteranopia

186.9120, 40.9900, -4.9780



Tritanopia

190.5250, 29.7990, 16.1270

Trichromacy



Original Color

187.2110, 41.5860, -4.7660

Protanomaly

186.0030, 30.3080, -9.6280

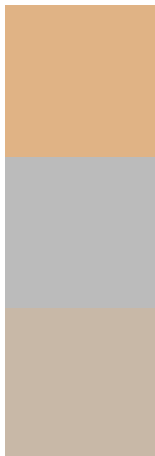
Deuteranomaly

186.9120, 40.9900, -4.9780

Tritanomaly

189.5220, 33.8810, 8.2250

Monochromacy



Original Color

187.2110, 41.5860, -4.7660

Achromatopsia

187.0000, -0.0000, -0.0000

Achromatomaly

186.8460, 14.9930, -1.8950

CSS Examples

Text

The CSS property to change the color of the text to YIQ 187.2110, 41.5860, -4.7660 is called "color". The color property can be set on classes, ids or directly on the HTML element.

This example shows how text in the color `rgb(224, 179, 133)` looks like.

```
.text, #text, p{  
    color:rgb(224, 179, 133)  
}
```

If you want to add a text shadow in that color use the text-shadow property, you can generate a text shadow directly with our [CSS Text Shadow Generator](#).

Here you see how black text with a 4 pixel rgb(224, 179, 133) colored shadow looks like.

```
.shadow{ text-shadow: 4px 4px 2px rgb(224, 179, 133) }
```

Border

The CSS property to change the border of an element to YIQ 187.2110, 41.5860, -4.7660 is called "border". The border property can be set on classes, ids or directly on the HTML element.

This example shows the color as border, it can be applied via the CSS property "border" or "border-color".

```
.border, #border, table{ border:4px solid rgb(224, 179, 133) }
```


If only the border color should be changed use the property `border-color`.

```
.border{ border-color:rgb(224, 179, 133) }
```

If you want to add a box shadow in that color use:

Here you see how a box with a 4 pixel `rgb(224, 179, 133)` colored shadow looks like.

```
.boxshadow{ -moz-box-shadow:4px 4px 4px  
4px rgb(224, 179, 133); -webkit-box-  
shadow:4px 4px 4px 4px rgb(224, 179, 133);  
box-shadow:4px 4px 4px 4px rgb(224, 179,  
133) }
```

Background

The CSS property to change the background color of an element to YIQ 187.2110, 41.5860, -4.7660 is called "background". The background property can be set on classes, ids or directly on the HTML element.

```
.background, #background, body{  
background: rgb(224, 179, 133) }
```

If only the background color should be changed can be used:

```
.background{ background-color: rgb(224,  
179, 133) }
```

This example shows the color as background, it is applied via the CSS property "background".

To optimize and compress your CSS code, you can use our [online CSS compressor and optimizer](#) based on csstidy. If you want to create a linear or radial gradient as background or border, check our [CSS Gradient Generator](#).

Hey! You found this booklet interesting? Support Converting Colors with the new Membership Option!

The pro membership hides all ads, plus gives you double the colors in the color bucket, and more awesome pro features!

[Learn more, Memberships starting at \\$2.50/m!](#)

**Follow me
on Twitter!**

@ConvertingColor