

Converting Colors

YIQ(187.5780, 13.1120, 4.6640)

Have a look what the booklet for
YIQ(187.5780, 13.1120, 4.6640)
contains.

YIQ(187.5780, 13.1120, 4.6640)	3
<i>Conversions</i>	4
<i>Details</i>	6
<i>Harmonies</i>	12
<i>Previews</i>	24
<i>Color Blindness Simulation</i>	28
<i>CSS Examples</i>	31

Color

**YIQ(187.5780, 13.1120,
4.6640)**

Conversions

Conversions Part 1

Format	Color
Hex	CBB5B5
RGB	203, 181, 181
RGB Percent	80%, 71%, 71%
CMY	0.2039, 0.2902, 0.2901
CMYK	0.00, 0.11, 0.11, 0.20
HSL	360°, 17%, 75%
HSV	360°, 11%, 80%
XYZ	49.4961, 49.0791, 50.5877
YIQ	187.5780, 13.1120, 4.6640

Conversions

Conversions Part 2

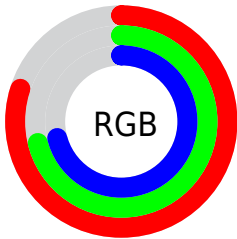
Format	Color
R_{YB}	203, 181, 181
Decimal	13350325
CIE Lab	75.50, 7.87, 2.86
CIE LCh	76, 8.371, 19.957
Yxy	49.0791, 0.3318, 0.3290
Android (android.graphics.Color)	4291540405 (0xFFCBB5B5)
YUV	187.5780, -3.2430, 13.5251
Hunter-Lab	70.0565, 3.5144, 6.2263

Details

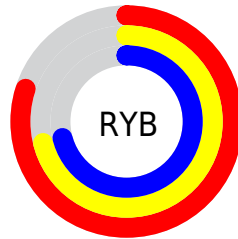
The YIQ color **187.5780, 13.1120, 4.6640** is a light color, and the websafe version is hex **CCCCCC**. A complement of this color would be **196.4220, -13.1120, -4.6640**, and the grayscale version is **188.0000, 0.0000, 0.0000**.

A 20% lighter version of the original color is **242.3820, 10.7280, 3.8160**, and **134.2790, 12.5160, 4.4520** is the 20% darker color. If you saturate the color by 10%, you get **173.5580, 25.0320, 8.9040**, and if you desaturate by 10%, it is **201.5980, 1.1920, 0.4240**.

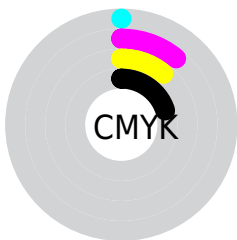
Distribution



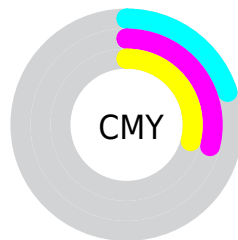
- Red (80%)
- Green (71%)
- Blue (71%)



- Red (80%)
- Yellow (71%)
- Blue (71%)



- Cyan (0%)
- Magenta (11%)
- Yellow (11%)
- Black (20%)



- Cyan (20%)
- Magenta (29%)
- Yellow (29%)

Brightness & Saturation Gradients

These gradients show how the YIQ color 187.5780, 13.1120, 4.6640 changes by changing the brightness by 10 percent. The first figure shows a shift by +10% for each color and the second figure -10%.

Similar to the brightness gradients but the following saturation gradients show a change of the YIQ color 187.5780, 13.1120, 4.6640 by changing the saturation by 10% instead.

■ 187.5780, 13.1120,
4.6640

■ 187.5780, 13.1120,
4.6640

255.0000, -0.0000,
-0.0000

■ 160.5780, 13.1120,
4.6640

■ 242.3820, 10.7280,
3.8160

■ 134.2790, 12.5160,
4.4520

■ 108.9800, 11.9200,
4.2400

■ 84.6810, 11.3240,
4.0280

■ 61.3820, 10.7280,
3.8160

■ 39.7840, 9.5360,
3.3920

■ 18.0830, 10.1320,

3.6040

■ 0.0000, 0.0000,
0.0000

■ 187.5780, 13.1120,
4.6640

■ 187.5780, 13.1120,
4.6640

■ 173.5580, 25.0320,
8.9040

■ 201.5980, 1.1920,
0.4240

■ 158.8370, 37.5480,
13.3560

■ 216.3190,
-11.3240, -4.0280

■ 144.8170, 49.4680,
17.5960

■ 230.3390,
-23.2440, -8.2680

■ 130.7970, 61.3880,
21.8360

■ 239.4520,
-30.9920, -11.0240

■ 116.1900, 73.5830,
26.5990

■ 102.0560, 85.8240,
30.5280

■ 88.0360, 97.7440,
34.7680

■ 74.0160, 109.6640,
39.0080

■ 60.6970, 120.9880,
43.0360

Harmonies

Analogous

The Analogous color harmony consists of three colors that are next to each other on the color wheel.



187.5930, 8.7560, 6.5160



187.5780, 13.1120, 4.6640



186.7690, 13.8920, 1.5400

Triad

The Triadic color harmony groups three colors that are evenly spaced from another and form a triangle on the color wheel.



187.5780, 13.1120, 4.6640



184.2290, -2.3830, -6.3750



185.0080, -11.6460, 1.8100

Complementary

The Complementary color scheme is a pair of colors which are on the opposite of each other on the color wheel.



187.5780, 13.1120, 4.6640



196.4220, -13.1120, -4.6640

Split Complementary

Split-complementary colors differ from the complementary color scheme. The scheme consists of three colors, the original color and two neighbors of the complement color.



184.5190, -14.7630, -2.2750



187.5780, 13.1120, 4.6640



184.1080, -9.3520, -6.7280

Square

The Square scheme is like the rectangle color scheme, but the four colors are evenly spaced on the color wheel.



187.5780, 13.1120, 4.6640



185.1760, 5.1360, -4.9760



183.8240, -14.3040, -5.0880



186.4110, -5.4110, 4.4530

Rectangle

The Rectangle color scheme consists of four colors that form a rectangle on the color wheel.



187.5780, 13.1120, 4.6640



186.8180, 12.1960, -0.7640



183.8240, -14.3040, -5.0880



184.8830, -12.7920, 0.5520

Sweetspot

The Sweet Spot groups the original color and five complimentary colors.



187.5780, 13.1120, 4.6640



249.3920, 4.7680, 1.6960



190.0860, 6.0500, 11.5060



123.7940, 3.5760, 1.2720



0.0000, 0.0000, 0.0000



128.0000, -0.0000, -0.0000

Same Dimension

The Same Dimension uses a secret algorithm to generate beautiful new colors.



187.5780, 13.1120, 4.6640



231.8670, 19.6680, 6.9960



194.0350, 10.0870, -1.0890



94.9900, 5.9600, 2.1200



49.6340, 98.9360, 35.1920



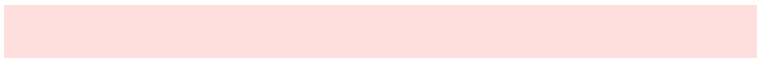
11.3620, 22.6480, 8.0560

Inverse Universe

The Inverse Universe completely reimagines the original color for something new.



187.5780, 13.1120, 4.6640



231.8670, 19.6680, 6.9960



189.9650, -10.0870, 1.0890



94.9900, 5.9600, 2.1200



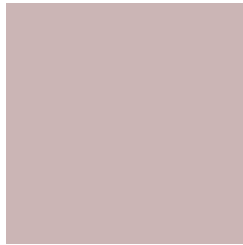
49.6340, 98.9360, 35.1920



11.3620, 22.6480, 8.0560

Previews

White Background



This preview shows how the YIQ color 187.5780, 13.1120, 4.6640 looks on a white background.

Color Contrast Check

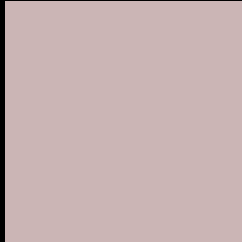
Large Text (above 18pt) WCAG AA × Fail

Any Text WCAG AA × Fail

Large Text (above 18pt) WCAG AAA × Fail

Any Text WCAG AAA × Fail

Black Background



This preview shows how the YIQ color 187.5780, 13.1120, 4.6640 looks on a black background.

Color Contrast Check

Large Text (above 18pt) WCAG AA ✓ Pass

Any Text WCAG AA ✓ Pass

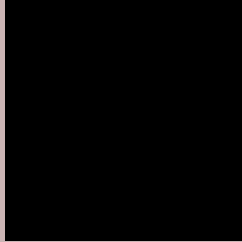
Large Text (above 18pt) WCAG AAA ✓ Pass

Any Text WCAG AAA ✓ Pass

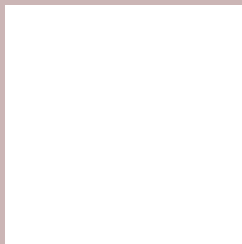
If you want to check with other color combinations, try the [Color Contrast Checker](#).

YIQ 187.5780, 13.1120, 4.6640

Background



This preview shows how black text looks on a background with the YIQ color 187.5780, 13.1120, 4.6640.



This preview shows how white text looks on a background with the YIQ color 187.5780, 13.1120,

4.6640.

Color Blindness Simulation

Color vision deficiency is a very complex topic, and I could not describe the different causes any better than Wikipedia does, so if you want to learn more, you should check out their [article about color blindness](#).

Dichromacy



Original Color

187.5780, 13.1120, 4.6640

Protanopia

186.2670, 3.6220, 0.4380

Deuteranopia

187.8880, 15.1750, 5.8230



Tritanopia

188.3700, 11.0020, 9.8660

Trichromacy



Original Color

187.5780, 13.1120, 4.6640

Protanomaly

187.0610, 7.1980, 1.7100

Deuteranomaly

187.5890, 14.5790, 5.6110

Tritanomaly

188.2020, 11.4150, 7.8870

Monochromacy



Original Color

187.5780, 13.1120, 4.6640

Achromatopsia

188.0000, 0.0000, 0.0000

Achromatomaly

187.3920, 4.7680, 1.6960

CSS Examples

Text

The CSS property to change the color of the text to YIQ 187.5780, 13.1120, 4.6640 is called "color". The color property can be set on classes, ids or directly on the HTML element.

This example shows how text in the color `rgb(203, 181, 181)` looks like.

```
.text, #text, p{  
    color:rgb(203, 181, 181)  
}
```

If you want to add a text shadow in that color use the text-shadow property, you can generate a text shadow directly with our [CSS Text Shadow Generator](#).

Here you see how black text with a 4 pixel rgb(203, 181, 181) colored shadow looks like.

```
.shadow{ text-shadow: 4px 4px 2px rgb(203, 181, 181) }
```

Border

The CSS property to change the border of an element to YIQ 187.5780, 13.1120, 4.6640 is called "border". The border property can be set on classes, ids or directly on the HTML element.

This example shows the color as border, it can be applied via the CSS property "border" or "border-color".

```
.border, #border, table{ border:4px solid rgb(203, 181, 181) }
```


If only the border color should be changed use the property `border-color`.

```
.border{ border-color:rgb(203, 181, 181) }
```

If you want to add a box shadow in that color use:

Here you see how a box with a 4 pixel `rgb(203, 181, 181)` colored shadow looks like.

```
.boxshadow{ -moz-box-shadow:4px 4px 4px  
4px rgb(203, 181, 181); -webkit-box-  
shadow:4px 4px 4px 4px rgb(203, 181, 181);  
box-shadow:4px 4px 4px 4px rgb(203, 181,  
181) }
```

Background

The CSS property to change the background color of an element to YIQ 187.5780, 13.1120, 4.6640 is called "background". The background property can be set on classes, ids or directly on the HTML element.

```
.background, #background, body{  
background: rgb(203, 181, 181) }
```

If only the background color should be changed can be used:

```
.background{ background-color: rgb(203,  
181, 181) }
```

This example shows the color as background, it is applied via the CSS property "background".

To optimize and compress your CSS code, you can use our [online CSS compressor and optimizer](#) based on csstidy. If you want to create a linear or radial gradient as background or border, check our [CSS Gradient Generator](#).

Hey! You found this booklet interesting? Support Converting Colors with the new Membership Option!

The pro membership hides all ads, plus gives you double the colors in the color bucket, and more awesome pro features!

[Learn more, Memberships starting at \\$2.50/m!](#)

**Follow me
on Twitter!**

@ConvertingColor