

Converting Colors

YIQ(187.6980, 12.6540, 1.9500)

Have a look what the booklet for
YIQ(187.6980, 12.6540, 1.9500)
contains.

YIQ(187.6980, 12.6540, 1.9500)	3
<i>Conversions</i>	4
<i>Details</i>	6
<i>Harmonies</i>	12
<i>Previews</i>	24
<i>Color Blindness Simulation</i>	28
<i>CSS Examples</i>	31

Color

**YIQ(187.6980, 12.6540,
1.9500)**

Conversions

Conversions Part 1

Format	Color
Hex	C9B7B1
RGB	201, 183, 177
RGB Percent	79%, 72%, 69%
CMY	0.2117, 0.2824, 0.3058
CMYK	0.00, 0.09, 0.12, 0.21
HSL	15°, 18%, 74%
HSV	15°, 12%, 79%
XYZ	48.9592, 49.4576, 48.5681
YIQ	187.6980, 12.6540, 1.9500

Conversions

Conversions Part 2

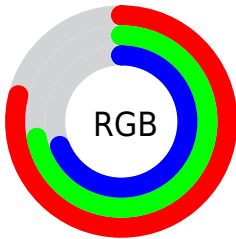
Format	Color
R _Y B	201, 185, 177
Decimal	13219761
CIE Lab	75.74, 5.40, 5.35
CIE LCh	76, 7.600, 44.755
Yxy	49.4576, 0.3331, 0.3365
Android (android.graphics.Color)	4291409841 (0xFFC9B7B1)
YUV	187.6980, -5.2741, 11.6659
Hunter-Lab	70.3261, 1.1964, 8.2818

Details

The YIQ color $187.6980, 12.6540, 1.9500$ is a light color, and the websafe version is hex `CCCCCC`. A complement of this color would be $190.3020, -12.6540, -1.9500$, and the grayscale version is $188.0000, 0.0000, 0.0000$.

A 20% lighter version of the original color is $243.1000, 11.4620, 1.5260$, and $134.3990, 12.0580, 1.7380$ is the 20% darker color. If you saturate the color by 10%, you get $176.6130, 23.1990, 3.5750$, and if you desaturate by 10%, it is $198.7830, 2.1090, 0.3250$.

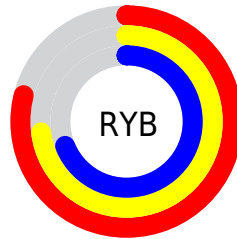
Distribution



Red (79%)

Green (72%)

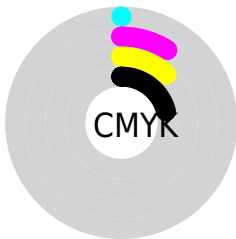
Blue (69%)



Red (79%)

Yellow (73%)

Blue (69%)

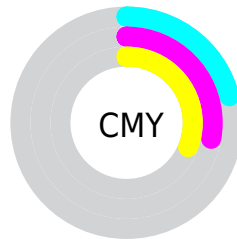


Cyan (0%)

Magenta (9%)

Yellow (12%)

Black (21%)



Cyan (21%)

Magenta (28%)

Yellow (31%)

Brightness & Saturation Gradients

These gradients show how the YIQ color 187.6980, 12.6540, 1.9500 changes by changing the brightness by 10 percent. The first figure shows a shift by +10% for each color and the second figure -10%.

Similar to the brightness gradients but the following saturation gradients show a change of the YIQ color 187.6980, 12.6540, 1.9500 by changing the saturation by 10% instead.

■ 187.6980, 12.6540,
1.9500

■ 187.6980, 12.6540,
1.9500

255.0000, -0.0000,
-0.0000

■ 160.6980, 12.6540,
1.9500

■ 243.1000, 11.4620,
1.5260

■ 134.3990, 12.0580,
1.7380

■ 109.2140, 11.1410,
1.8370

■ 84.9150, 10.5450,
1.6250

■ 61.6160, 9.9490,
1.4130

■ 39.4310, 9.0320,
1.5120

■ 18.3880, 10.5910,

0.7910

0.0000, 0.0000,
0.0000

187.6980, 12.6540,
1.9500

187.6980, 12.6540,
1.9500

176.6130, 23.1990,
3.5750

198.7830, 2.1090,
0.3250

165.5280, 33.7440,
5.2000

209.8680, -8.4360,
-1.3000

154.4430, 44.2890,
6.8250

220.9530,
-18.9810, -2.9250

143.3580, 54.8340,
8.4500

231.8100,
-28.8840, -5.1720

132.2730, 65.3790,
10.0750

238.8540,
-32.1840, -11.4480

■ 120.4870, 76.5200,
11.9120

■ 109.4020, 87.0650,
13.5370

■ 98.3170, 97.6100,
15.1620

■ 89.4490, 106.0460,
16.4620

Harmonies

Analogous

The Analogous color harmony consists of three colors that are next to each other on the color wheel.



188.0940, 11.5990, 4.5510



187.6980, 12.6540, 1.9500



186.9210, 10.4080, -1.4000

Triad

The Triadic color harmony groups three colors that are evenly spaced from another and form a triangle on the color wheel.



187.6980, 12.6540, 1.9500



185.0050, -7.5640, -6.0920



186.9980, -5.6860, 3.9300

Complementary

The Complementary color scheme is a pair of colors which are on the opposite of each other on the color wheel.



187.6980, 12.6540, 1.9500



190.3020, -12.6540, -1.9500

Split Complementary

Split-complementary colors differ from the complementary color scheme. The scheme consists of three colors, the original color and two neighbors of the complement color.



185.7800, -11.0040, 1.1880



187.6980, 12.6540, 1.9500



184.6070, -12.1950, -4.7630

Square

The Square scheme is like the rectangle color scheme, but the four colors are evenly spaced on the color wheel.



187.6980, 12.6540, 1.9500



185.2400, -0.9160, -5.4280



185.0030, -13.2500, -2.1620



187.8740, 0.5950, 5.7390

Rectangle

The Rectangle color scheme consists of four colors that form a rectangle on the color wheel.



187.6980, 12.6540, 1.9500



186.3120, 7.7490, -2.7710



185.0030, -13.2500, -2.1620



186.6880, -7.7490, 2.7710

Sweetspot

The Sweet Spot groups the original color and five complimentary colors.



187.6980, 12.6540, 1.9500



249.1640, 5.4100, 1.0740



186.2280, 8.5260, 10.6860



124.2670, 3.6220, 0.4380



0.0000, 0.0000, 0.0000



128.0000, -0.0000, -0.0000

Same Dimension

The Same Dimension uses a secret algorithm to generate beautiful new colors.



187.6980, 12.6540, 1.9500



235.0470, 18.9810, 2.9250



194.7420, 9.3540, -4.3260



93.8650, 4.8140, 0.8620



72.8040, 85.8730, 13.1130



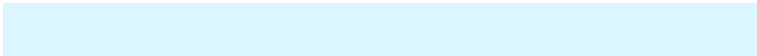
16.0470, 18.9810, 2.9250

Inverse Universe

The Inverse Universe completely reimagines the original color for something new.



190.3020, -12.6540, -1.9500



238.9530, -18.9810, -2.9250



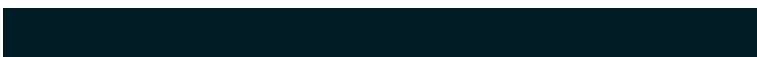
183.2580, -9.3540, 4.3260



95.1350, -4.8140, -0.8620



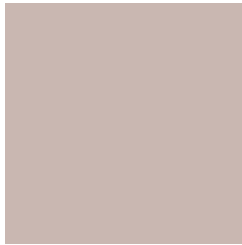
90.7830, -86.1480, -13.6360



19.9530, -18.9810, -2.9250

Previews

White Background



This preview shows how the YIQ color 187.6980, 12.6540, 1.9500 looks on a white background.

Color Contrast Check

Large Text (above 18pt) WCAG AA × Fail

Any Text WCAG AA × Fail

Large Text (above 18pt) WCAG AAA × Fail

Any Text WCAG AAA × Fail

Black Background



This preview shows how the YIQ color 187.6980, 12.6540, 1.9500 looks on a black background.

Color Contrast Check

Large Text (above 18pt) WCAG AA ✓ Pass

Any Text WCAG AA ✓ Pass

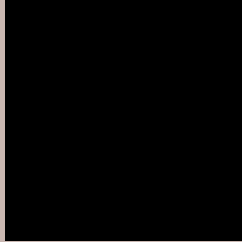
Large Text (above 18pt) WCAG AAA ✓ Pass

Any Text WCAG AAA ✓ Pass

If you want to check with other color combinations, try the [Color Contrast Checker](#).

YIQ 187.6980, 12.6540, 1.9500

Background



This preview shows how black text looks on a background with the YIQ color 187.6980, 12.6540, 1.9500.



This preview shows how white text looks on a background with the YIQ color 187.6980, 12.6540,

1.9500.

Color Blindness Simulation

Color vision deficiency is a very complex topic, and I could not describe the different causes any better than Wikipedia does, so if you want to learn more, you should check out their [article about color blindness](#).

Dichromacy



Original Color

187.6980, 12.6540, 1.9500

Protanopia

186.9960, 5.8230, -0.9050

Deuteranopia

188.1440, 17.3300, 5.3140



Tritanopia

188.4730, 9.2140, 9.2300

Trichromacy



Original Color

187.6980, 12.6540, 1.9500

Protanomaly

187.1920, 8.2070, -0.0570

Deuteranomaly

187.8340, 15.2670, 4.1550

Tritanomaly

188.0770, 10.2690, 6.6290

Monochromacy



Original Color

187.6980, 12.6540, 1.9500

Achromatopsia

188.0000, 0.0000, 0.0000

Achromatomaly

187.8650, 4.8140, 0.8620

CSS Examples

Text

The CSS property to change the color of the text to YIQ 187.6980, 12.6540, 1.9500 is called "color". The color property can be set on classes, ids or directly on the HTML element.

This example shows how text in the color `rgb(201, 183, 177)` looks like.

```
.text, #text, p{  
    color:rgb(201, 183, 177)  
}
```

If you want to add a text shadow in that color use the text-shadow property, you can generate a text shadow directly with our [CSS Text Shadow Generator](#).

Here you see how black text with a 4 pixel rgb(201, 183, 177) colored shadow looks like.

```
.shadow{ text-shadow: 4px 4px 2px rgb(201, 183, 177) }
```

Border

The CSS property to change the border of an element to YIQ 187.6980, 12.6540, 1.9500 is called "border". The border property can be set on classes, ids or directly on the HTML element.

This example shows the color as border, it can be applied via the CSS property "border" or "border-color".

```
.border, #border, table{ border:4px solid rgb(201, 183, 177) }
```


If only the border color should be changed use the property `border-color`.

```
.border{ border-color:rgb(201, 183, 177) }
```

If you want to add a box shadow in that color use:

Here you see how a box with a 4 pixel `rgb(201, 183, 177)` colored shadow looks like.

```
.boxshadow{ -moz-box-shadow:4px 4px 4px  
4px rgb(201, 183, 177); -webkit-box-  
shadow:4px 4px 4px 4px rgb(201, 183, 177);  
box-shadow:4px 4px 4px 4px rgb(201, 183,  
177) }
```

Background

The CSS property to change the background color of an element to YIQ 187.6980, 12.6540, 1.9500 is called "background". The background property can be set on classes, ids or directly on the HTML element.

```
.background, #background, body{  
background: rgb(201, 183, 177) }
```

If only the background color should be changed can be used:

```
.background{ background-color: rgb(201,  
183, 177) }
```

This example shows the color as background, it is applied via the CSS property "background".

To optimize and compress your CSS code, you can use our [online CSS compressor and optimizer](#) based on csstidy. If you want to create a linear or radial gradient as background or border, check our [CSS Gradient Generator](#).

Hey! You found this booklet interesting? Support Converting Colors with the new Membership Option!

The pro membership hides all ads, plus gives you double the colors in the color bucket, and more awesome pro features!

[Learn more, Memberships starting at \\$2.50/m!](#)

**Follow me
on Twitter!**

@ConvertingColor