

Converting Colors

YIQ(188.5850, 20.4020, 4.7060)

Have a look what the booklet for
YIQ(188.5850, 20.4020, 4.7060)
contains.

YIQ(188.5850, 20.4020, 4.7060)	3
<i>Conversions</i>	4
<i>Details</i>	6
<i>Harmonies</i>	12
<i>Previews</i>	24
<i>Color Blindness Simulation</i>	28
<i>CSS Examples</i>	31

Color

**YIQ(188.5850, 20.4020,
4.7060)**

Conversions

Conversions Part 1

Format	Color
Hex	D3B4AE
RGB	211, 180, 174
RGB Percent	83%, 71%, 68%
CMY	0.1725, 0.2941, 0.3176
CMYK	0.00, 0.15, 0.18, 0.17
HSL	10°, 30%, 75%
HSV	10°, 18%, 83%
XYZ	50.8298, 49.5456, 46.9398
YIQ	188.5850, 20.4020, 4.7060

Conversions

Conversions Part 2

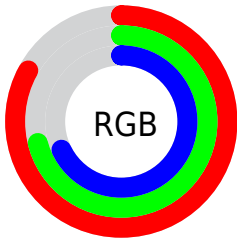
Format	Color
R _Y B	211, 181, 174
Decimal	13874350
CIE Lab	75.79, 10.20, 7.17
CIE LCh	76, 12.472, 35.103
Yxy	49.5456, 0.3450, 0.3363
Android (android.graphics.Color)	4292064430 (0xFFD3B4AE)
YUV	188.5850, -7.1904, 19.6580
Hunter-Lab	70.3886, 5.7202, 9.7336

Details

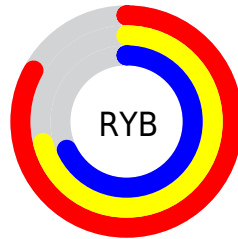
The YIQ color **188.5850, 20.4020, 4.7060** is a light color, and the websafe version is hex **CC9999**. A complement of this color would be **196.4150, -20.4020, -4.7060**, and the grayscale version is **189.0000, -0.0000, -0.0000**.

A 20% lighter version of the original color is **240.8830, 13.5710, 1.8510**, and **135.1010, 18.8890, 4.5930** is the 20% darker color. If you saturate the color by 10%, you get **175.6250, 32.0930, 7.5890**, and if you desaturate by 10%, it is **201.5450, 8.7110, 1.8230**.

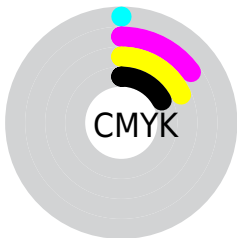
Distribution



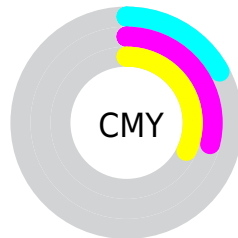
- Red (83%)
- Green (71%)
- Blue (68%)



- Red (83%)
- Yellow (71%)
- Blue (68%)



- Cyan (0%)
- Magenta (15%)
- Yellow (18%)
- Black (17%)



- Cyan (17%)
- Magenta (29%)
- Yellow (32%)

Brightness & Saturation Gradients

These gradients show how the YIQ color 188.5850, 20.4020, 4.7060 changes by changing the brightness by 10 percent. The first figure shows a shift by +10% for each color and the second figure -10%.

Similar to the brightness gradients but the following saturation gradients show a change of the YIQ color 188.5850, 20.4020, 4.7060 by changing the saturation by 10% instead.

■ 188.5850, 20.4020,
4.7060

■ 188.5850, 20.4020,
4.7060

■ 255.0000, -0.0000,
-0.0000

■ 161.2860, 19.8060,
4.4940

■ 240.8830, 13.5710,
1.8510

■ 135.1010, 18.8890,
4.5930

■ 109.8020, 18.2930,
4.3810

■ 85.2040, 17.1010,
3.9570

■ 62.0190, 16.1840,
4.0560

■ 40.1220, 14.3960,
3.4200

■ 17.9650, 16.2760,

2.3880

0.0000, 0.0000,
0.0000

188.5850, 20.4020,
4.7060

188.5850, 20.4020,
4.7060

175.6250, 32.0930,
7.5890

201.5450, 8.7110,
1.8230

163.2520, 43.5090,
9.9490

213.9180, -2.7050,
-0.5370

150.2920, 55.2000,
12.8320

226.8780,
-14.3960, -3.4200

137.3320, 66.8910,
15.7150

239.4960,
-25.1240, -7.2360

124.9590, 78.3070,
18.0750

241.8440,
-26.2240, -9.3280

■ 111.8850, 90.3190,
20.6470

■ 98.9250, 102.0100,
23.5300

■ 85.9650, 113.7010,
26.4130

■ 83.0470, 116.4060,
26.9500

Harmonies

Analogous

The Analogous color harmony consists of three colors that are next to each other on the color wheel.



189.2520, 17.1460, 8.6500



188.5850, 20.4020, 4.7060



187.6400, 18.5690, -0.6230

Triad

The Triadic color harmony groups three colors that are evenly spaced from another and form a triangle on the color wheel.



188.5850, 20.4020, 4.7060



183.7010, -9.7640, -10.2760



186.5180, -13.0220, 4.7220

Complementary

The Complementary color scheme is a pair of colors which are on the opposite of each other on the color wheel.



188.5850, 20.4020, 4.7060



196.4150, -20.4020, -4.7060

Split Complementary

Split-complementary colors differ from the complementary color scheme. The scheme consists of three colors, the original color and two neighbors of the complement color.



184.7510, -21.2280, -0.7480



188.5850, 20.4020, 4.7060



183.1500, -18.3380, -9.0740

Square

The Square scheme is like the rectangle color scheme, but the four colors are evenly spaced on the color wheel.



188.5850, 20.4020, 4.7060



184.8010, 1.6980, -8.7500



183.3330, -23.1070, -5.2430



188.3130, -2.0190, 9.0610

Rectangle

The Rectangle color scheme consists of four colors that form a rectangle on the color wheel.



188.5850, 20.4020, 4.7060



186.4930, 14.4890, -3.7750



183.3330, -23.1070, -5.2430



185.6100, -16.2770, 3.1390

Sweetspot

The Sweet Spot groups the original color and five complimentary colors.



188.5850, 20.4020, 4.7060



247.0610, 7.1980, 1.7100



188.5970, 12.1010, 17.4850



122.9790, 4.4930, 1.1730



0.0000, 0.0000, 0.0000



128.0000, -0.0000, -0.0000

Same Dimension

The Same Dimension uses a secret algorithm to generate beautiful new colors.



188.5850, 20.4020, 4.7060



222.4290, 29.7090, 6.7410



199.1510, 15.4520, -4.7080



98.4630, 6.0060, 1.2860



66.0810, 92.7030, 21.4950



16.3680, 22.5110, 5.0310

Inverse Universe

The Inverse Universe completely reimagines the original color for something new.



196.4150, -20.4020, -4.7060



233.5710, -29.7090, -6.7410



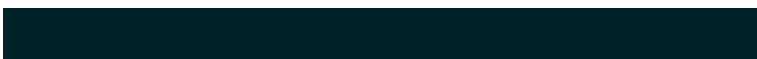
185.8490, -15.4520, 4.7080



100.5370, -6.0060, -1.2860



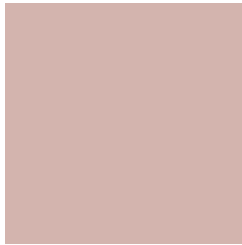
101.9190, -92.7030, -21.4950



24.6320, -22.5110, -5.0310

Previews

White Background



This preview shows how the YIQ color 188.5850, 20.4020, 4.7060 looks on a white background.

Color Contrast Check

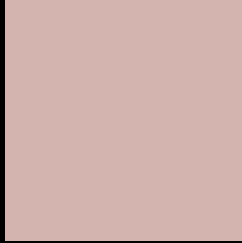
Large Text (above 18pt) WCAG AA × Fail

Any Text WCAG AA × Fail

Large Text (above 18pt) WCAG AAA × Fail

Any Text WCAG AAA × Fail

Black Background



This preview shows how the YIQ color 188.5850, 20.4020, 4.7060 looks on a black background.

Color Contrast Check

Large Text (above 18pt) WCAG AA ✓ Pass

Any Text WCAG AA ✓ Pass

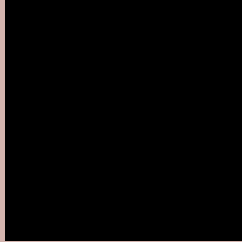
Large Text (above 18pt) WCAG AAA ✓ Pass

Any Text WCAG AAA ✓ Pass

If you want to check with other color combinations, try the [Color Contrast Checker](#).

YIQ 188.5850, 20.4020, 4.7060

Background



This preview shows how black text looks on a background with the YIQ color 188.5850, 20.4020, 4.7060.



This preview shows how white text looks on a background with the YIQ color 188.5850, 20.4020,

4.7060.

Color Blindness Simulation

Color vision deficiency is a very complex topic, and I could not describe the different causes any better than Wikipedia does, so if you want to learn more, you should check out their [article about color blindness](#).

Dichromacy



Original Color

188.5850, 20.4020, 4.7060

Protanopia

187.0670, 7.0610, -1.3150

Deuteranopia

188.2860, 19.8060, 4.4940



Tritanopia

189.3600, 16.9620, 11.9860

Trichromacy



Original Color

188.5850, 20.4020, 4.7060

Protanomaly

187.8720, 12.1040, 0.9040

Deuteranomaly

188.2860, 19.8060, 4.4940

Tritanomaly

188.9640, 18.0170, 9.3850

Monochromacy



Original Color

188.5850, 20.4020, 4.7060

Achromatopsia

189.0000, -0.0000, -0.0000

Achromatomaly

189.0610, 7.1980, 1.7100

CSS Examples

Text

The CSS property to change the color of the text to YIQ 188.5850, 20.4020, 4.7060 is called "color". The color property can be set on classes, ids or directly on the HTML element.

This example shows how text in the color `rgb(211, 180, 174)` looks like.

```
.text, #text, p{  
    color:rgb(211, 180, 174)  
}
```

If you want to add a text shadow in that color use the text-shadow property, you can generate a text shadow directly with our [CSS Text Shadow Generator](#).

Here you see how black text with a 4 pixel rgb(211, 180, 174) colored shadow looks like.

```
.shadow{ text-shadow: 4px 4px 2px rgb(211, 180, 174) }
```

Border

The CSS property to change the border of an element to YIQ 188.5850, 20.4020, 4.7060 is called "border". The border property can be set on classes, ids or directly on the HTML element.

This example shows the color as border, it can be applied via the CSS property "border" or "border-color".

```
.border, #border, table{ border:4px solid rgb(211, 180, 174) }
```


If only the border color should be changed use the property `border-color`.

```
.border{ border-color:rgb(211, 180, 174) }
```

If you want to add a box shadow in that color use:

Here you see how a box with a 4 pixel `rgb(211, 180, 174)` colored shadow looks like.

```
.boxshadow{ -moz-box-shadow:4px 4px 4px  
4px rgb(211, 180, 174); -webkit-box-  
shadow:4px 4px 4px 4px rgb(211, 180, 174);  
box-shadow:4px 4px 4px 4px rgb(211, 180,  
174) }
```

Background

The CSS property to change the background color of an element to YIQ 188.5850, 20.4020, 4.7060 is called "background". The background property can be set on classes, ids or directly on the HTML element.

```
.background, #background, body{  
background: rgb(211, 180, 174) }
```

If only the background color should be changed can be used:

```
.background{ background-color: rgb(211,  
180, 174) }
```

This example shows the color as background, it is applied via the CSS property "background".

To optimize and compress your CSS code, you can use our [online CSS compressor and optimizer](#) based on csstidy. If you want to create a linear or radial gradient as background or border, check our [CSS Gradient Generator](#).

Hey! You found this booklet interesting? Support Converting Colors with the new Membership Option!

The pro membership hides all ads, plus gives you double the colors in the color bucket, and more awesome pro features!

[Learn more, Memberships starting at \\$2.50/m!](#)

**Follow me
on Twitter!**

@ConvertingColor