

Converting Colors

YIQ(188.7920, 24.2530, 6.5010)

Have a look what the booklet for
YIQ(188.7920, 24.2530, 6.5010)
contains.

YIQ(188.7920, 24.2530, 6.5010)	3
<i>Conversions</i>	4
<i>Details</i>	6
<i>Harmonies</i>	12
<i>Previews</i>	24
<i>Color Blindness Simulation</i>	28
<i>CSS Examples</i>	31

Color

**YIQ(188.7920, 24.2530,
6.5010)**

Conversions

Conversions Part 1

Format	Color
Hex	D8B2AD
RGB	216, 178, 173
RGB Percent	85%, 70%, 68%
CMY	0.1529, 0.3020, 0.3215
CMYK	0.00, 0.18, 0.20, 0.15
HSL	7°, 36%, 76%
HSV	7°, 20%, 85%
XYZ	51.7880, 49.4549, 46.3643
YIQ	188.7920, 24.2530, 6.5010

Conversions

Conversions Part 2

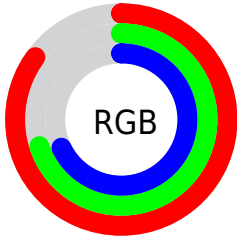
Format	Color
R_{YB}	216, 179, 173
Decimal	14201517
CIE _{Lab}	75.73, 12.98, 7.70
CIE _{LCh}	76, 15.089, 30.663
Yxy	49.4549, 0.3509, 0.3350
Android (android.graphics.Color)	4292391597 (0xFFD8B2AD)
YUV	188.7920, -7.7855, 23.8614
Hunter-Lab	70.3242, 8.3834, 10.1373

Details

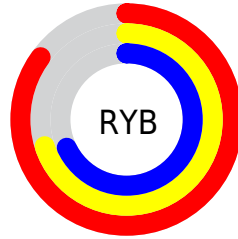
The YIQ color **188.7920, 24.2530, 6.5010** is a light color, and the websafe version is hex **CC9999**. A complement of this color would be **200.2080, -24.2530, -6.5010**, and the grayscale version is **189.0000, -0.0000, -0.0000**.

A 20% lighter version of the original color is **239.5950, 14.4420, 2.5860**, and **135.3080, 22.7400, 6.3880** is the 20% darker color. If you saturate the color by 10%, you get **175.1310, 36.5400, 9.5960**, and if you desaturate by 10%, it is **202.4530, 11.9660, 3.4060**.

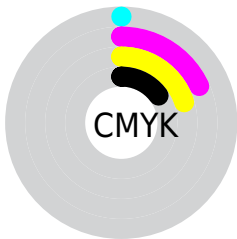
Distribution



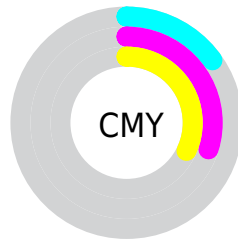
- Red (85%)
- Green (70%)
- Blue (68%)



- Red (85%)
- Yellow (70%)
- Blue (68%)



- Cyan (0%)
- Magenta (18%)
- Yellow (20%)
- Black (15%)





- Cyan (15%)
- Magenta (30%)
- Yellow (32%)

Brightness & Saturation Gradients


These gradients show how the YIQ color 188.7920, 24.2530, 6.5010 changes by changing the brightness by 10 percent. The first figure shows a shift by +10% for each color and the second figure -10%.


Similar to the brightness gradients but the following saturation gradients show a change of the YIQ color 188.7920, 24.2530, 6.5010 by changing the saturation by 10% instead.


 188.7920, 24.2530,
6.5010


 188.7920, 24.2530,
6.5010


255.0000, -0.0000,
-0.0000


 161.4930, 23.6570,
6.2890


 239.5950, 14.4420,
2.5860

 135.3080, 22.7400,
6.3880

 109.7100, 21.5480,
5.9640

 85.1120, 20.3560,
5.5400

 61.6280, 18.8430,
5.4270

 39.7310, 17.0550,
4.7910

 17.5740, 18.9350,

3.7590

0.0000, 0.0000,
0.0000

188.7920, 24.2530,
6.5010

188.7920, 24.2530,
6.5010

175.1310, 36.5400,
9.5960

202.4530, 11.9660,
3.4060

161.5840, 48.5060,
13.0020

216.0000, -0.0000,
0.0000

147.9230, 60.7930,
16.0970

229.6610,
-12.2870, -3.0950

134.3760, 72.7590,
19.5030

242.7520,
-22.9690, -7.7450

120.1280, 85.3210,
23.1210

243.3390,
-23.2440, -8.2680

■ 106.4670, 97.6080,
26.2160

■ 92.9200, 109.5740,
29.6220

■ 79.2590, 121.8610,
32.7170

Harmonies

Analogous

The Analogous color harmony consists of three colors that are next to each other on the color wheel.



189.5020, 19.4380, 11.1660



188.7920, 24.2530, 6.5010



187.6190, 23.0620, 0.5500

Triad

The Triadic color harmony groups three colors that are evenly spaced from another and form a triangle on the color wheel.



188.7920, 24.2530, 6.5010



182.6470, -9.6720, -11.9440



186.1800, -17.8820, 4.6940

Complementary

The Complementary color scheme is a pair of colors which are on the opposite of each other on the color wheel.



188.7920, 24.2530, 6.5010



200.2080, -24.2530, -6.5010

Split Complementary

Split-complementary colors differ from the complementary color scheme. The scheme consists of three colors, the original color and two neighbors of the complement color.



183.5870, -26.6380, -1.8220



188.7920, 24.2530, 6.5010



182.0140, -20.9510, -11.2790

Square

The Square scheme is like the rectangle color scheme, but the four colors are evenly spaced on the color wheel.



188.7920, 24.2530, 6.5010



184.5300, 3.8990, -10.0930



181.8270, -27.5540, -7.2500



188.2850, -4.8160, 10.1920

Rectangle

The Rectangle color scheme consists of four colors that form a rectangle on the color wheel.



188.7920, 24.2530, 6.5010



186.5320, 18.7530, -3.9590



181.8270, -27.5540, -7.2500



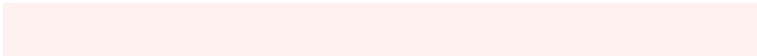
184.9730, -21.7330, 2.8990

Sweetspot

The Sweet Spot groups the original color and five complimentary colors.



188.7920, 24.2530, 6.5010



245.0720, 8.6650, 2.6570



190.3030, 13.1090, 21.2450



122.2780, 5.0890, 1.3850



0.0000, 0.0000, 0.0000



128.0000, -0.0000, -0.0000

Same Dimension

The Same Dimension uses a secret algorithm to generate beautiful new colors.



188.7920, 24.2530, 6.5010



216.3480, 34.4310, 9.2710



201.1190, 18.4780, -4.4820



100.4630, 6.0060, 1.2860



62.8690, 96.4160, 25.7920



15.7920, 24.2530, 6.5010

Inverse Universe

The Inverse Universe completely reimagines the original color for something new.



200.2080, -24.2530, -6.5010



232.6520, -34.4310, -9.2710



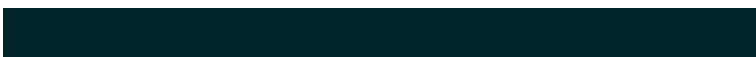
187.8810, -18.4780, 4.4820



103.1240, -6.2810, -1.8090



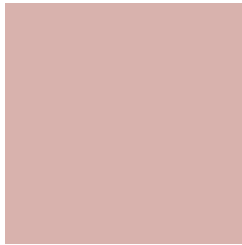
108.1310, -96.4160, -25.7920



27.2080, -24.2530, -6.5010

Previews

White Background



This preview shows how the YIQ color 188.7920, 24.2530, 6.5010 looks on a white background.

Color Contrast Check

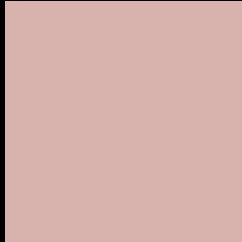
Large Text (above 18pt) WCAG AA × Fail

Any Text WCAG AA × Fail

Large Text (above 18pt) WCAG AAA × Fail

Any Text WCAG AAA × Fail

Black Background



This preview shows how the YIQ color 188.7920, 24.2530, 6.5010 looks on a black background.

Color Contrast Check

Large Text (above 18pt) WCAG AA ✓ Pass

Any Text WCAG AA ✓ Pass

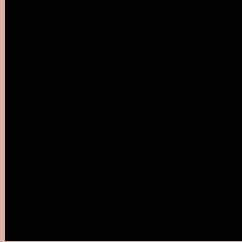
Large Text (above 18pt) WCAG AAA ✓ Pass

Any Text WCAG AAA ✓ Pass

If you want to check with other color combinations, try the [Color Contrast Checker](#).

YIQ 188.7920, 24.2530, 6.5010

Background



This preview shows how black text looks on a background with the YIQ color 188.7920, 24.2530, 6.5010.



This preview shows how white text looks on a background with the YIQ color 188.7920, 24.2530,

Color Blindness Simulation

Color vision deficiency is a very complex topic, and I could not describe the different causes any better than Wikipedia does, so if you want to learn more, you should check out their [article about color blindness](#).

Dichromacy



Original Color

188.7920, 24.2530, 6.5010

Protanopia

186.7680, 6.4650, -1.5270

Deuteranopia

188.1720, 20.1270, 4.1830



Tritanopia

190.0400, 20.8590, 12.9470

Trichromacy



Original Color

188.7920, 24.2530, 6.5010

Protanomaly

187.5840, 12.9750, 1.6390

Deuteranomaly

188.1830, 21.5940, 5.1300

Tritanomaly

189.6440, 21.9140, 10.3460

Monochromacy



Original Color

188.7920, 24.2530, 6.5010

Achromatopsia

189.0000, -0.0000, -0.0000

Achromatomaly

188.9580, 8.9860, 2.3460

CSS Examples

Text

The CSS property to change the color of the text to YIQ 188.7920, 24.2530, 6.5010 is called "color". The color property can be set on classes, ids or directly on the HTML element.

This example shows how text in the color `rgb(216, 178, 173)` looks like.

```
.text, #text, p{  
    color:rgb(216, 178, 173)  
}
```

If you want to add a text shadow in that color use the text-shadow property, you can generate a text shadow directly with our [CSS Text Shadow Generator](#).

Here you see how black text with a 4 pixel rgb(216, 178, 173) colored shadow looks like.

```
.shadow{ text-shadow: 4px 4px 2px rgb(216, 178, 173) }
```

Border

The CSS property to change the border of an element to YIQ 188.7920, 24.2530, 6.5010 is called "border". The border property can be set on classes, ids or directly on the HTML element.

This example shows the color as border, it can be applied via the CSS property "border" or "border-color".

```
.border, #border, table{ border:4px solid rgb(216, 178, 173) }
```


If only the border color should be changed use the property `border-color`.

```
.border{ border-color:rgb(216, 178, 173) }
```

If you want to add a box shadow in that color use:

Here you see how a box with a 4 pixel `rgb(216, 178, 173)` colored shadow looks like.

```
.boxshadow{ -moz-box-shadow:4px 4px 4px  
4px rgb(216, 178, 173); -webkit-box-  
shadow:4px 4px 4px 4px rgb(216, 178, 173);  
box-shadow:4px 4px 4px 4px rgb(216, 178,  
173) }
```

Background

The CSS property to change the background color of an element to YIQ 188.7920, 24.2530, 6.5010 is called "background". The background property can be set on classes, ids or directly on the HTML element.

```
.background, #background, body{  
background: rgb(216, 178, 173) }
```

If only the background color should be changed can be used:

```
.background{ background-color: rgb(216,  
178, 173) }
```

This example shows the color as background, it is applied via the CSS property "background".

To optimize and compress your CSS code, you can use our [online CSS compressor and optimizer](#) based on csstidy. If you want to create a linear or radial gradient as background or border, check our [CSS Gradient Generator](#).

Hey! You found this booklet interesting? Support Converting Colors with the new Membership Option!

The pro membership hides all ads, plus gives you double the colors in the color bucket, and more awesome pro features!

[Learn more, Memberships starting at \\$2.50/m!](#)

**Follow me
on Twitter!**

@ConvertingColor