

Converting Colors

YIQ(188.8530, 22.2830, -1.8530)

Have a look what the booklet for
YIQ(188.8530, 22.2830, -1.8530)
contains.

YIQ(188.8530, 22.2830, -1.8530)	3
<i>Conversions</i>	4
<i>Details</i>	6
<i>Harmonies</i>	12
<i>Previews</i>	24
<i>Color Blindness Simulation</i>	28
<i>CSS Examples</i>	31

Color

**YIQ(188.8530, 22.2830,
-1.8530)**

Conversions

Conversions Part 1

Format	Color
Hex	D1B8A1
RGB	209, 184, 161
RGB Percent	82%, 72%, 63%
CMY	0.1803, 0.2785, 0.3685
CMYK	0.00, 0.12, 0.23, 0.18
HSL	29°, 34%, 73%
HSV	29°, 23%, 82%
XYZ	49.8715, 50.4077, 40.8319
YIQ	188.8530, 22.2830, -1.8530

Conversions

Conversions Part 2

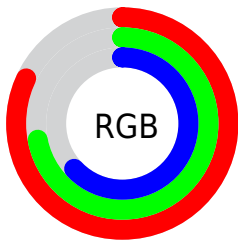
Format	Color
R_{YB}	209, 205, 161
Decimal	13744289
CIE _{Lab}	76.32, 5.36, 14.94
CIE _{LCh}	76, 15.875, 70.286
Yxy	50.4077, 0.3534, 0.3572
Android (android.graphics.Color)	4291934369 (0xFFD1B8A1)
YUV	188.8530, -13.7315, 17.6689
Hunter-Lab	70.9984, 1.1367, 15.6006

Details

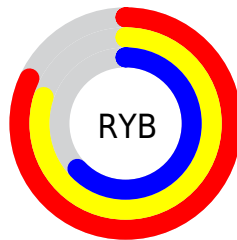
The YIQ color **188.8530, 22.2830, -1.8530** is a light color, and the websafe version is hex **CCCCCC**. A complement of this color would be **181.1470, -22.2830, 1.8530**, and the grayscale version is **189.0000, -0.0000, -0.0000**.

A 20% lighter version of the original color is **241.7490, 16.6440, -4.2840**, and **135.3690, 20.7700, -1.9660** is the 20% darker color. If you saturate the color by 10%, you get **180.0020, 32.0490, -2.6310**, and if you desaturate by 10%, it is **197.7040, 12.5170, -1.0750**.

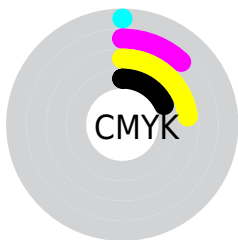
Distribution



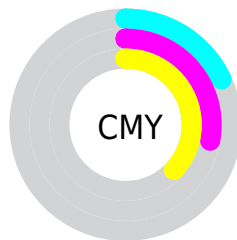
- Red (82%)
- Green (72%)
- Blue (63%)



- Red (82%)
- Yellow (80%)
- Blue (63%)



- Cyan (0%)
- Magenta (12%)
- Yellow (23%)
- Black (18%)



- Cyan (18%)
- Magenta (28%)
- Yellow (37%)

Brightness & Saturation Gradients

These gradients show how the YIQ color 188.8530, 22.2830, -1.8530 changes by changing the brightness by 10 percent. The first figure shows a shift by +10% for each color and the second figure -10%.

Similar to the brightness gradients but the following saturation gradients show a change of the YIQ color 188.8530, 22.2830, -1.8530 by changing the saturation by 10% instead.

■ 188.8530, 22.2830,
-1.8530

■ 188.8530, 22.2830,
-1.8530

■ 255.0000, -0.0000,
-0.0000

■ 161.6680, 21.3660,
-1.7540

■ 241.7490, 16.6440,
-4.2840

■ 135.3690, 20.7700,
-1.9660

■ 253.7460, 3.5310,
-3.4210

■ 110.1840, 19.8530,
-1.8670

■ 85.7000, 18.3400,
-1.9800

■ 62.5150, 17.4230,
-1.8810

■ 40.0310, 15.9100,
-1.9940

■ 19.8460, 14.9930,

-1.8950

■ 0.0000, 0.0000,
0.0000

■ 188.8530, 22.2830,
-1.8530

■ 188.8530, 22.2830,
-1.8530

■ 180.0020, 32.0490,
-2.6310

■ 197.7040, 12.5170,
-1.0750

■ 171.1510, 41.8150,
-3.4090

■ 206.5550, 2.7510,
-0.2970

■ 162.3000, 51.5810,
-4.1870

■ 215.4060, -7.0150,
0.4810

■ 153.4490, 61.3470,
-4.9650

■ 224.2570,
-16.7810, 1.2590

■ 145.2990, 70.5170,
-5.9550

■ 231.2670,
-22.7410, -0.8610

■ 136.4480, 80.2830,
-6.7330

■ 237.7240,
-25.7660, -6.6140

■ 127.5970, 90.0490,
-7.5110

■ 241.2460,
-27.4160, -9.7520

■ 121.1910, 97.0640,
-7.9920

Harmonies

Analogous

The Analogous color harmony consists of three colors that are next to each other on the color wheel.



190.2220, 25.8580, 4.9460



188.8530, 22.2830, -1.8530



187.3740, 13.2060, -8.0580

Triad

The Triadic color harmony groups three colors that are evenly spaced from another and form a triangle on the color wheel.



188.8530, 22.2830, -1.8530



183.0890, -25.5360, -10.7840



190.3780, -0.6440, 11.6760

Complementary

The Complementary color scheme is a pair of colors which are on the opposite of each other on the color wheel.



188.8530, 22.2830, -1.8530



181.1470, -22.2830, 1.8530

Split Complementary

Split-complementary colors differ from the complementary color scheme. The scheme consists of three colors, the original color and two neighbors of the complement color.



188.6150, -14.6730, 7.1110



188.8530, 22.2830, -1.8530



183.7990, -30.3510, -6.1190

Square

The Square scheme is like the rectangle color scheme, but the four colors are evenly spaced on the color wheel.



188.8530, 22.2830, -1.8530



183.7820, -14.4860, -12.8060



185.3530, -25.8590, 0.5810



191.0330, 13.5690, 12.9050

Rectangle

The Rectangle color scheme consists of four colors that form a rectangle on the color wheel.



188.8530, 22.2830, -1.8530



186.3020, 4.5410, -10.7150



185.3530, -25.8590, 0.5810



189.3990, -5.1370, 10.5030

Sweetspot

The Sweet Spot groups the original color and five complimentary colors.



188.8530, 22.2830, -1.8530



247.6650, 8.2530, -0.8910



178.3160, 20.2620, 18.2620



123.2240, 5.1810, -0.2830



0.0000, 0.0000, 0.0000



128.0000, -0.0000, -0.0000

Same Dimension

The Same Dimension uses a secret algorithm to generate beautiful new colors.



188.8530, 22.2830, -1.8530



225.1870, 32.9660, -2.7300



202.3540, 15.9580, -13.8820



100.2240, 5.1810, -0.2830



97.7790, 77.8530, -6.7470



23.9990, 18.9360, -1.7680

Inverse Universe

The Inverse Universe completely reimagines the original color for something new.



181.1470, -22.2830, 1.8530



213.8130, -32.9660, 2.7300



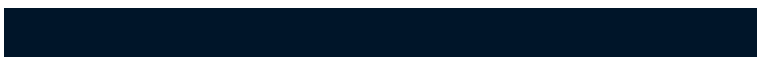
167.6460, -15.9580, 13.8820



98.7760, -5.1810, 0.2830



70.8080, -78.1280, 6.2240



17.0010, -18.9360, 1.7680

Previews

White Background



This preview shows how the YIQ color 188.8530, 22.2830, -1.8530 looks on a white background.

Color Contrast Check

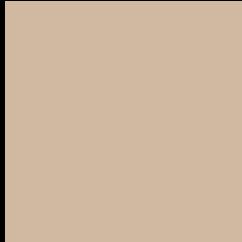
Large Text (above 18pt) WCAG AA × Fail

Any Text WCAG AA × Fail

Large Text (above 18pt) WCAG AAA × Fail

Any Text WCAG AAA × Fail

Black Background



This preview shows how the YIQ color 188.8530, 22.2830, -1.8530 looks on a black background.

Color Contrast Check

Large Text (above 18pt) WCAG AA ✓ Pass

Any Text WCAG AA ✓ Pass

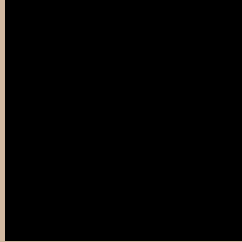
Large Text (above 18pt) WCAG AAA ✓ Pass

Any Text WCAG AAA ✓ Pass

If you want to check with other color combinations, try the [Color Contrast Checker](#).

YIQ 188.8530, 22.2830, -1.8530

Background



This preview shows how black text looks on a background with the YIQ color 188.8530, 22.2830, -1.8530.



This preview shows how white text looks on a background with the YIQ color 188.8530, 22.2830, -1.8530.

-1.8530.

Color Blindness Simulation

Color vision deficiency is a very complex topic, and I could not describe the different causes any better than Wikipedia does, so if you want to learn more, you should check out their [article about color blindness](#).

Dichromacy



Original Color

188.8530, 22.2830, -1.8530

Protanopia

188.1400, 13.9850, -5.6550

Deuteranopia

189.2990, 26.9590, 1.5110



Tritanopia

190.7620, 15.7700, 11.5620

Trichromacy



Original Color

188.8530, 22.2830, -1.8530

Protanomaly

188.6350, 16.9650, -4.5950

Deuteranomaly

188.9890, 24.8960, 0.3520

Tritanomaly

190.2690, 18.4760, 6.5720

Monochromacy



Original Color

188.8530, 22.2830, -1.8530

Achromatopsia

189.0000, -0.0000, -0.0000

Achromatomaly

188.7790, 7.9320, -0.5800

CSS Examples

Text

The CSS property to change the color of the text to YIQ 188.8530, 22.2830, -1.8530 is called "color". The color property can be set on classes, ids or directly on the HTML element.

This example shows how text in the color `rgb(209, 184, 161)` looks like.

```
.text, #text, p{  
    color:rgb(209, 184, 161)  
}
```

If you want to add a text shadow in that color use the text-shadow property, you can generate a text shadow directly with our [CSS Text Shadow Generator](#).

Here you see how black text with a 4 pixel rgb(209, 184, 161) colored shadow looks like.

```
.shadow{ text-shadow: 4px 4px 2px rgb(209, 184, 161) }
```

Border

The CSS property to change the border of an element to YIQ 188.8530, 22.2830, -1.8530 is called "border". The border property can be set on classes, ids or directly on the HTML element.

This example shows the color as border, it can be applied via the CSS property "border" or "border-color".

```
.border, #border, table{ border:4px solid rgb(209, 184, 161) }
```


If only the border color should be changed use the property border-color.

```
.border{ border-color:rgb(209, 184, 161) }
```

If you want to add a box shadow in that color use:

Here you see how a box with a 4 pixel rgb(209, 184, 161) colored shadow looks like.

```
.boxshadow{ -moz-box-shadow:4px 4px 4px  
4px rgb(209, 184, 161); -webkit-box-  
shadow:4px 4px 4px 4px rgb(209, 184, 161);  
box-shadow:4px 4px 4px 4px rgb(209, 184,  
161) }
```

Background

The CSS property to change the background color of an element to YIQ 188.8530, 22.2830, -1.8530 is called "background". The background property can be set on classes, ids or directly on the HTML element.

```
.background, #background, body{  
background: rgb(209, 184, 161) }
```

If only the background color should be changed can be used:

```
.background{ background-color: rgb(209,  
184, 161) }
```

This example shows the color as background, it is applied via the CSS property "background".

To optimize and compress your CSS code, you can use our [online CSS compressor and optimizer](#) based on csstidy. If you want to create a linear or radial gradient as background or border, check our [CSS Gradient Generator](#).

Hey! You found this booklet interesting? Support Converting Colors with the new Membership Option!

The pro membership hides all ads, plus gives you double the colors in the color bucket, and more awesome pro features!

[Learn more, Memberships starting at \\$2.50/m!](#)

**Follow me
on Twitter!**

@ConvertingColor