

Converting Colors

YIQ(188.9810, 19.3470, 7.3070)

Have a look what the booklet for
YIQ(188.9810, 19.3470, 7.3070)
contains.

YIQ(188.9810, 19.3470, 7.3070)	3
<i>Conversions</i>	4
<i>Details</i>	6
<i>Harmonies</i>	12
<i>Previews</i>	24
<i>Color Blindness Simulation</i>	28
<i>CSS Examples</i>	31

Color

**YIQ(188.9810, 19.3470,
7.3070)**

Conversions

Conversions Part 1

Format	Color
Hex	D4B3B4
RGB	212, 179, 180
RGB Percent	83%, 70%, 71%
CMY	0.1685, 0.2981, 0.2940
CMYK	0.00, 0.16, 0.15, 0.17
HSL	358°, 28%, 77%
HSV	358°, 16%, 83%
XYZ	51.5147, 49.5308, 50.0356
YIQ	188.9810, 19.3470, 7.3070

Conversions

Conversions Part 2

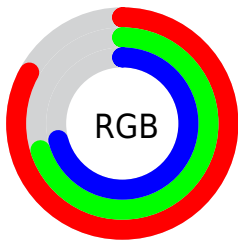
Format	Color
R _Y B	212, 179, 180
Decimal	13939636
CIE Lab	75.78, 12.06, 3.91
CIE LCh	76, 12.674, 17.945
Yxy	49.5308, 0.3410, 0.3278
Android (android.graphics.Color)	4292129716 (0xFFD4B3B4)
YUV	188.9810, -4.4276, 20.1877
Hunter-Lab	70.3781, 7.4951, 7.1122

Details

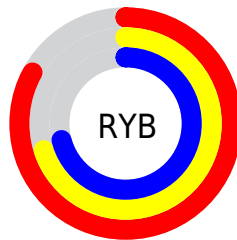
The YIQ color **188.9810, 19.3470, 7.3070** is a light color, and the websafe version is hex **CC9999**. A complement of this color would be **202.0190, -19.3470, -7.3070**, and the grayscale version is **189.0000, -0.0000, -0.0000**.

A 20% lighter version of the original color is **241.0940, 11.5990, 4.5510**, and **135.3830, 18.1550, 6.8830** is the 20% darker color. If you saturate the color by 10%, you get **174.2600, 31.8630, 11.7590**, and if you desaturate by 10%, it is **203.7020, 6.8310, 2.8550**.

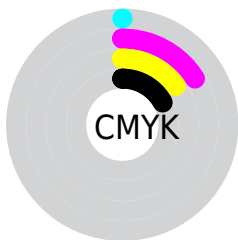
Distribution



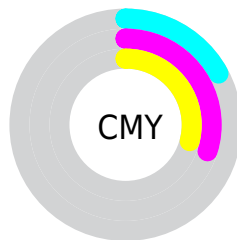
- Red (83%)
- Green (70%)
- Blue (71%)



- Red (83%)
- Yellow (70%)
- Blue (71%)



- Cyan (0%)
- Magenta (16%)
- Yellow (15%)
- Black (17%)





- Cyan (17%)
- Magenta (30%)
- Yellow (29%)

Brightness & Saturation Gradients


These gradients show how the YIQ color 188.9810, 19.3470, 7.3070 changes by changing the brightness by 10 percent. The first figure shows a shift by +10% for each color and the second figure -10%.


Similar to the brightness gradients but the following saturation gradients show a change of the YIQ color 188.9810, 19.3470, 7.3070 by changing the saturation by 10% instead.


 188.9810, 19.3470,
7.3070


 188.9810, 19.3470,
7.3070


255.0000, -0.0000,
-0.0000


 161.6820, 18.7510,
7.0950


 241.0940, 11.5990,
4.5510

 135.3830, 18.1550,
6.8830

 110.0840, 17.5590,
6.6710

 85.4860, 16.3670,
6.2470

 62.3010, 15.4500,
6.3460

 40.2900, 13.9830,
5.3990

 18.5890, 14.5790,

5.6110

■ 0.0000, 0.0000,
0.0000

■ 188.9810, 19.3470,
7.3070

■ 188.9810, 19.3470,
7.3070

■ 174.2600, 31.8630,
11.7590

■ 203.7020, 6.8310,
2.8550

■ 159.6530, 44.0580,
16.5220

■ 218.3090, -5.3640,
-1.9080

■ 144.3450, 56.8490,
21.4970

■ 233.6170,
-18.1550, -6.8830

■ 129.7380, 69.0440,
26.2600

■ 242.1430,
-25.6280, -9.1160

■ 115.0170, 81.5600,
30.7120

■ 100.4100, 93.7550,
35.4750

■ 85.6890, 106.2710,
39.9270

■ 70.4950, 118.7410,
45.2130

■ 64.1860, 124.1050,
47.1210

Harmonies

Analogous

The Analogous color harmony consists of three colors that are next to each other on the color wheel.



189.1530, 13.1110, 10.1910



188.9810, 19.3470, 7.3070



188.1180, 20.2190, 2.5150

Triad

The Triadic color harmony groups three colors that are evenly spaced from another and form a triangle on the color wheel.



188.9810, 19.3470, 7.3070



183.9360, -3.1160, -9.6120



185.3000, -18.3400, 1.9800

Complementary

The Complementary color scheme is a pair of colors which are on the opposite of each other on the color wheel.



188.9810, 19.3470, 7.3070



202.0190, -19.3470, -7.3070

Split Complementary

Split-complementary colors differ from the complementary color scheme. The scheme consists of three colors, the original color and two neighbors of the complement color.



183.5010, -23.5200, -3.2640



188.9810, 19.3470, 7.3070



182.9610, -13.4320, -9.8800

Square

The Square scheme is like the rectangle color scheme, but the four colors are evenly spaced on the color wheel.



188.9810, 19.3470, 7.3070



185.6770, 7.9790, -6.9410



183.1220, -21.1350, -7.9430



187.1380, -8.8960, 7.0400

Rectangle

The Rectangle color scheme consists of four colors that form a rectangle on the color wheel.



188.9810, 19.3470, 7.3070



187.2270, 18.2940, -1.1460



183.1220, -21.1350, -7.9430



184.5770, -20.6780, 0.2980

Sweetspot

The Sweet Spot groups the original color and five complimentary colors.



188.9810, 19.3470, 7.3070



246.0010, 7.4270, 3.0670



192.3300, 8.4790, 17.0470



122.3920, 4.7680, 1.6960



0.0000, 0.0000, 0.0000



128.0000, -0.0000, -0.0000

Same Dimension

The Same Dimension uses a secret algorithm to generate beautiful new colors.



188.9810, 19.3470, 7.3070



221.4660, 28.2870, 10.4870



197.6720, 15.5430, -0.8490



99.4030, 6.2350, 2.6430



51.6990, 100.3110, 37.8070



12.9710, 25.3070, 9.4270

Inverse Universe

The Inverse Universe completely reimagines the original color for something new.



188.9810, 19.3470, 7.3070



221.4660, 28.2870, 10.4870



193.3280, -15.5430, 0.8490



99.4030, 6.2350, 2.6430



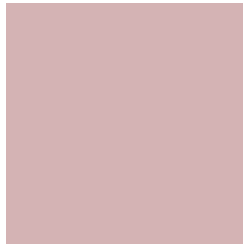
51.6990, 100.3110, 37.8070



12.9710, 25.3070, 9.4270

Previews

White Background



This preview shows how the YIQ color 188.9810, 19.3470, 7.3070 looks on a white background.

Color Contrast Check

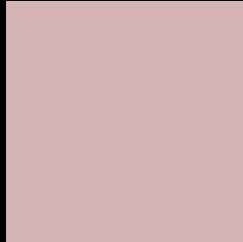
Large Text (above 18pt) WCAG AA × Fail

Any Text WCAG AA × Fail

Large Text (above 18pt) WCAG AAA × Fail

Any Text WCAG AAA × Fail

Black Background



This preview shows how the YIQ color 188.9810, 19.3470, 7.3070 looks on a black background.

Color Contrast Check

Large Text (above 18pt) WCAG AA ✓ Pass

Any Text WCAG AA ✓ Pass

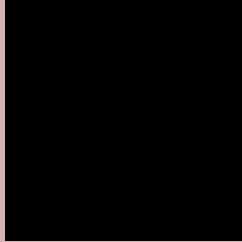
Large Text (above 18pt) WCAG AAA ✓ Pass

Any Text WCAG AAA ✓ Pass

If you want to check with other color combinations, try the [Color Contrast Checker](#).

YIQ 188.9810, 19.3470, 7.3070

Background



This preview shows how black text looks on a background with the YIQ color 188.9810, 19.3470, 7.3070.



This preview shows how white text looks on a background with the YIQ color 188.9810, 19.3470,

7.3070.

Color Blindness Simulation

Color vision deficiency is a very complex topic, and I could not describe the different causes any better than Wikipedia does, so if you want to learn more, you should check out their [article about color blindness](#).

Dichromacy



Original Color

188.9810, 19.3470, 7.3070

Protanopia

187.2670, 3.6220, 0.4380

Deuteranopia

188.9590, 16.4130, 5.4130



Tritanopia

189.3600, 16.9620, 11.9860

Trichromacy



Original Color

188.9810, 19.3470, 7.3070

Protanomaly

187.7840, 9.5360, 3.3920

Deuteranomaly

188.6710, 17.2840, 6.1480

Tritanomaly

189.4910, 17.9710, 10.2190

Monochromacy



Original Color

188.9810, 19.3470, 7.3070

Achromatopsia

189.0000, -0.0000, -0.0000

Achromatomaly

188.7020, 6.8310, 2.8550

CSS Examples

Text

The CSS property to change the color of the text to YIQ 188.9810, 19.3470, 7.3070 is called "color". The color property can be set on classes, ids or directly on the HTML element.

This example shows how text in the color `rgb(212, 179, 180)` looks like.

```
.text, #text, p{  
    color:rgb(212, 179, 180)  
}
```

If you want to add a text shadow in that color use the text-shadow property, you can generate a text shadow directly with our [CSS Text Shadow Generator](#).

Here you see how black text with a 4 pixel rgb(212, 179, 180) colored shadow looks like.

```
.shadow{ text-shadow: 4px 4px 2px rgb(212, 179, 180) }
```

Border

The CSS property to change the border of an element to YIQ 188.9810, 19.3470, 7.3070 is called "border". The border property can be set on classes, ids or directly on the HTML element.

This example shows the color as border, it can be applied via the CSS property "border" or "border-color".

```
.border, #border, table{ border:4px solid rgb(212, 179, 180) }
```


If only the border color should be changed use the property `border-color`.

```
.border{ border-color:rgb(212, 179, 180) }
```

If you want to add a box shadow in that color use:

Here you see how a box with a 4 pixel `rgb(212, 179, 180)` colored shadow looks like.

```
.boxshadow{ -moz-box-shadow:4px 4px 4px  
4px rgb(212, 179, 180); -webkit-box-  
shadow:4px 4px 4px 4px rgb(212, 179, 180);  
box-shadow:4px 4px 4px 4px rgb(212, 179,  
180) }
```

Background

The CSS property to change the background color of an element to YIQ 188.9810, 19.3470, 7.3070 is called "background". The background property can be set on classes, ids or directly on the HTML element.

```
.background, #background, body{  
background: rgb(212, 179, 180) }
```

If only the background color should be changed can be used:

```
.background{ background-color: rgb(212,  
179, 180) }
```

This example shows the color as background, it is applied via the CSS property "background".

To optimize and compress your CSS code, you can use our [online CSS compressor and optimizer](#) based on csstidy. If you want to create a linear or radial gradient as background or border, check our [CSS Gradient Generator](#).

Hey! You found this booklet interesting? Support Converting Colors with the new Membership Option!

The pro membership hides all ads, plus gives you double the colors in the color bucket, and more awesome pro features!

[Learn more, Memberships starting at \\$2.50/m!](#)

**Follow me
on Twitter!**

@ConvertingColor