

Converting Colors

YIQ(189.4410, 12.2400, 9.4560)

Have a look what the booklet for
YIQ(189.4410, 12.2400, 9.4560)
contains.

YIQ(189.4410, 12.2400, 9.4560)	3
<i>Conversions</i>	4
<i>Details</i>	6
<i>Harmonies</i>	12
<i>Previews</i>	24
<i>Color Blindness Simulation</i>	28
<i>CSS Examples</i>	31

Color

**YIQ(189.4410, 12.2400,
9.4560)**

Conversions

Conversions Part 1

Format	Color
Hex	CFB4C0
RGB	207, 180, 192
RGB Percent	81%, 71%, 75%
CMY	0.1882, 0.2941, 0.2470
CMYK	0.00, 0.13, 0.07, 0.19
HSL	333°, 22%, 76%
HSV	333°, 13%, 81%
XYZ	51.5717, 49.7122, 56.7523
YIQ	189.4410, 12.2400, 9.4560

Conversions

Conversions Part 2

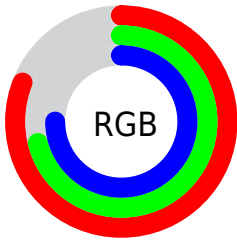
Format	Color
R _Y B	207, 180, 192
Decimal	13612224
CIE Lab	75.89, 11.73, -2.52
CIE LCh	76, 11.993, 347.871
Yxy	49.7122, 0.3263, 0.3146
Android (android.graphics.Color)	4291802304 (0xFFCFB4C0)
YUV	189.4410, 1.2616, 15.3992
Hunter-Lab	70.5069, 7.1755, 1.6312

Details

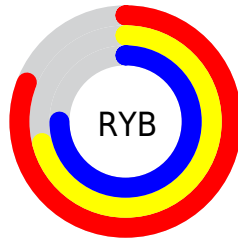
The YIQ color **189.4410, 12.2400, 9.4560** is a light color, and the websafe version is hex **CCCCCC**. A complement of this color would be **197.5590, -12.2400, -9.4560**, and the grayscale version is **189.0000, -0.0000, -0.0000**.

A 20% lighter version of the original color is **243.0490, 7.4720, 7.7600**, and **136.1420, 11.6440, 9.2440** is the 20% darker color. If you saturate the color by 10%, you get **175.8600, 21.5460, 17.0180**, and if you desaturate by 10%, it is **203.1360, 2.6130, 2.2050**.

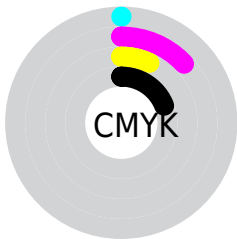
Distribution



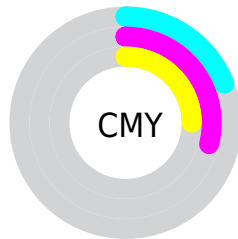
- Red (81%)
- Green (71%)
- Blue (75%)



- Red (81%)
- Yellow (71%)
- Blue (75%)



- Cyan (0%)
- Magenta (13%)
- Yellow (7%)
- Black (19%)



- Cyan (19%)
- Magenta (29%)
- Yellow (25%)

Brightness & Saturation Gradients

These gradients show how the YIQ color 189.4410, 12.2400, 9.4560 changes by changing the brightness by 10 percent. The first figure shows a shift by +10% for each color and the second figure -10%.

Similar to the brightness gradients but the following saturation gradients show a change of the YIQ color 189.4410, 12.2400, 9.4560 by changing the saturation by 10% instead.

■ 189.4410, 12.2400,
9.4560

■ 189.4410, 12.2400,
9.4560

■ 255.0000, -0.0000,
-0.0000

■ 162.1420, 11.6440,
9.2440

■ 243.0490, 7.4720,
7.7600

■ 136.1420, 11.6440,
9.2440

■ 110.4300, 10.7730,
8.5090

■ 86.1310, 10.1770,
8.2970

■ 62.7180, 9.9020,
7.7740

■ 40.4190, 9.3060,
7.5620

■ 19.5330, 8.9850,

7.8730

■ 0.0000, 0.0000,
0.0000

■ 189.4410, 12.2400,
9.4560

■ 189.4410, 12.2400,
9.4560

■ 175.8600, 21.5460,
17.0180

■ 203.1360, 2.6130,
2.2050

■ 162.7520, 30.8980,
23.7460

■ 216.1300, -6.4180,
-4.8340

■ 149.1710, 40.2040,
31.3080

■ 229.8250,
-16.0450, -12.0850

■ 135.4760, 49.8310,
38.5590

■ 238.7100,
-23.1510, -15.4630

■ 121.8950, 59.1370,
46.1210

■ 239.9640,
-26.6820, -12.0420

■ 108.7870, 68.4890,
52.8490

■ 240.6480,
-28.6080, -10.1760

■ 95.2060, 77.7950,
60.4110

■ 81.5110, 87.4220,
67.6620

■ 72.3810, 93.8400,
72.4960

Harmonies

Analogous

The Analogous color harmony consists of three colors that are next to each other on the color wheel.



188.7650, 2.5200, 9.4000



189.4410, 12.2400, 9.4560



189.3830, 18.1550, 6.8830

Triad

The Triadic color harmony groups three colors that are evenly spaced from another and form a triangle on the color wheel.



189.4410, 12.2400, 9.4560



185.7910, 7.6580, -6.6300



183.9850, -22.0070, -3.1510

Complementary

The Complementary color scheme is a pair of colors which are on the opposite of each other on the color wheel.



189.4410, 12.2400, 9.4560



197.5590, -12.2400, -9.4560

Split Complementary

Split-complementary colors differ from the complementary color scheme. The scheme consists of three colors, the original color and two neighbors of the complement color.



183.7200, -19.9430, -7.5190



189.4410, 12.2400, 9.4560



184.9360, -3.1160, -9.6120

Square

The Square scheme is like the rectangle color scheme, but the four colors are evenly spaced on the color wheel.



189.4410, 12.2400, 9.4560



187.6180, 15.6350, -2.5170



183.3740, -13.1570, -9.3570



185.4850, -17.4230, 1.8810

Rectangle

The Rectangle color scheme consists of four colors that form a rectangle on the color wheel.



189.4410, 12.2400, 9.4560



188.8730, 19.5310, 3.9710



183.3740, -13.1570, -9.3570



183.9310, -21.9150, -4.8190

Sweetspot

The Sweet Spot groups the original color and five complimentary colors.



189.4410, 12.2400, 9.4560



248.4460, 4.6760, 3.3640



187.5630, 0.2730, 11.5770



123.4350, 3.2090, 2.4170



0.0000, 0.0000, 0.0000



128.0000, -0.0000, -0.0000

Same Dimension

The Same Dimension uses a secret algorithm to generate beautiful new colors.



189.4410, 12.2400, 9.4560



228.3110, 18.6580, 14.2900



188.6600, 15.8170, 5.2010



97.8590, 4.9510, 3.8870



58.7820, 76.0530, 58.9410



14.3110, 18.6580, 14.2900

Inverse Universe

The Inverse Universe completely reimagines the original color for something new.



189.4410, 12.2400, 9.4560



228.3110, 18.6580, 14.2900



198.3400, -15.8170, -5.2010



97.8590, 4.9510, 3.8870



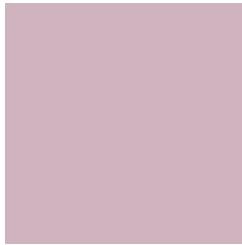
58.7820, 76.0530, 58.9410



14.3110, 18.6580, 14.2900

Previews

White Background



This preview shows how the YIQ color 189.4410, 12.2400, 9.4560 looks on a white background.

Color Contrast Check

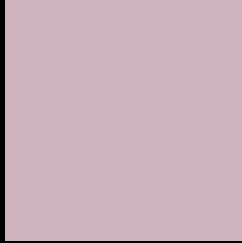
Large Text (above 18pt) WCAG AA × Fail

Any Text WCAG AA × Fail

Large Text (above 18pt) WCAG AAA × Fail

Any Text WCAG AAA × Fail

Black Background



This preview shows how the YIQ color 189.4410, 12.2400, 9.4560 looks on a black background.

Color Contrast Check

Large Text (above 18pt) WCAG AA ✓ Pass

Any Text WCAG AA ✓ Pass

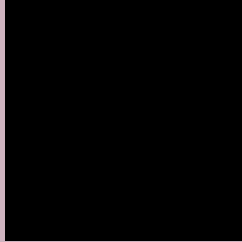
Large Text (above 18pt) WCAG AAA ✓ Pass

Any Text WCAG AAA ✓ Pass

If you want to check with other color combinations, try the [Color Contrast Checker](#).

YIQ 189.4410, 12.2400, 9.4560

Background



This preview shows how black text looks on a background with the YIQ color 189.4410, 12.2400, 9.4560.



This preview shows how white text looks on a background with the YIQ color 189.4410, 12.2400,

9.4560.

Color Blindness Simulation

Color vision deficiency is a very complex topic, and I could not describe the different causes any better than Wikipedia does, so if you want to learn more, you should check out their [article about color blindness](#).

Dichromacy



Original Color

189.4410, 12.2400, 9.4560

Protanopia

187.7380, -2.0180, 3.5340

Deuteranopia

188.8320, 9.5810, 8.0850



Tritanopia

189.6690, 11.5980, 10.0780

Trichromacy



Original Color

189.4410, 12.2400, 9.4560

Protanomaly

188.5430, 3.0250, 5.7530

Deuteranomaly

189.1310, 10.1770, 8.2970

Tritanomaly

189.5550, 11.9190, 9.7670

Monochromacy



Original Color

189.4410, 12.2400, 9.4560

Achromatopsia

189.0000, -0.0000, -0.0000

Achromatomaly

189.4460, 4.6760, 3.3640

CSS Examples

Text

The CSS property to change the color of the text to YIQ 189.4410, 12.2400, 9.4560 is called "color". The color property can be set on classes, ids or directly on the HTML element.

This example shows how text in the color `rgb(207, 180, 192)` looks like.

```
.text, #text, p{  
    color:rgb(207, 180, 192)  
}
```

If you want to add a text shadow in that color use the text-shadow property, you can generate a text shadow directly with our [CSS Text Shadow Generator](#).

Here you see how black text with a 4 pixel rgb(207, 180, 192) colored shadow looks like.

```
.shadow{ text-shadow: 4px 4px 2px rgb(207, 180, 192) }
```

Border

The CSS property to change the border of an element to YIQ 189.4410, 12.2400, 9.4560 is called "border". The border property can be set on classes, ids or directly on the HTML element.

This example shows the color as border, it can be applied via the CSS property "border" or "border-color".

```
.border, #border, table{ border:4px solid rgb(207, 180, 192) }
```


If only the border color should be changed use the property `border-color`.

```
.border{ border-color:rgb(207, 180, 192) }
```

If you want to add a box shadow in that color use:

Here you see how a box with a 4 pixel `rgb(207, 180, 192)` colored shadow looks like.

```
.boxshadow{ -moz-box-shadow:4px 4px 4px  
4px rgb(207, 180, 192); -webkit-box-  
shadow:4px 4px 4px 4px rgb(207, 180, 192);  
box-shadow:4px 4px 4px 4px rgb(207, 180,  
192) }
```

Background

The CSS property to change the background color of an element to YIQ 189.4410, 12.2400, 9.4560 is called "background". The background property can be set on classes, ids or directly on the HTML element.

```
.background, #background, body{  
background: rgb(207, 180, 192) }
```

If only the background color should be changed can be used:

```
.background{ background-color: rgb(207,  
180, 192) }
```

This example shows the color as background, it is applied via the CSS property "background".

To optimize and compress your CSS code, you can use our [online CSS compressor and optimizer](#) based on csstidy. If you want to create a linear or radial gradient as background or border, check our [CSS Gradient Generator](#).

Hey! You found this booklet interesting? Support Converting Colors with the new Membership Option!

The pro membership hides all ads, plus gives you double the colors in the color bucket, and more awesome pro features!

[Learn more, Memberships starting at \\$2.50/m!](#)

**Follow me
on Twitter!**

@ConvertingColor