

Converting Colors

YIQ(189.4820, 39.3850, -3.4230)

Have a look what the booklet for
YIQ(189.4820, 39.3850, -3.4230)
contains.

YIQ(189.4820, 39.3850, -3.4230)	3
<i>Conversions</i>	4
<i>Details</i>	6
<i>Harmonies</i>	12
<i>Previews</i>	24
<i>Color Blindness Simulation</i>	28
<i>CSS Examples</i>	31

Color

**YIQ(189.4820, 39.3850,
-3.4230)**

Conversions

Conversions Part 1

Format	Color
Hex	E1B58C
RGB	225, 181, 140
RGB Percent	88%, 71%, 55%
CMY	0.1176, 0.2902, 0.4508
CMYK	0.00, 0.20, 0.38, 0.12
HSL	29°, 59%, 72%
HSV	29°, 38%, 88%
XYZ	52.3149, 50.9458, 31.9057
YIQ	189.4820, 39.3850, -3.4230

Conversions

Conversions Part 2

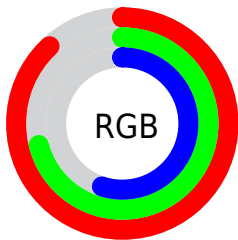
Format	Color
R _Y B	225, 219, 140
Decimal	14792076
CIE Lab	76.65, 10.43, 26.89
CIE LCh	77, 28.844, 68.811
Yxy	50.9458, 0.3870, 0.3769
Android (android.graphics.Color)	4292982156 (0xFFE1B58C)
YUV	189.4820, -24.3946, 31.1493
Hunter-Lab	71.3764, 5.9219, 23.4604

Details

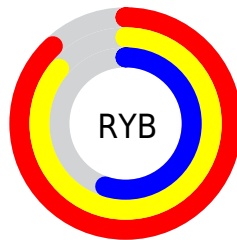
The YIQ color $189.4820, 39.3850, -3.4230$ is a light color, and the websafe version is hex FFCC99 . A complement of this color would be $175.5180, -39.3850, 3.4230$, and the grayscale version is $190.0000, -0.0000, -0.0000$.

A 20% lighter version of the original color is $237.4800, 24.5310, -9.5570$, and $135.5140, 36.3590, -3.6490$ is the 20% darker color. If you saturate the color by 10%, you get $179.9300, 49.7470, -3.9890$, and if you desaturate by 10%, it is $199.1480, 28.7020, -2.5460$.

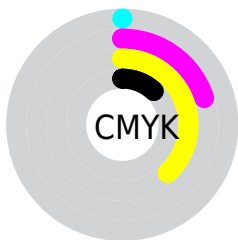
Distribution



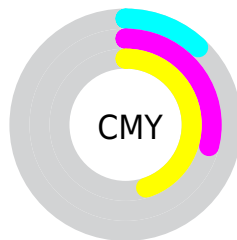
- Red (88%)
- Green (71%)
- Blue (55%)



- Red (88%)
- Yellow (86%)
- Blue (55%)



- Cyan (0%)
- Magenta (20%)
- Yellow (38%)
- Black (12%)



- Cyan (12%)
- Magenta (29%)
- Yellow (45%)

Brightness & Saturation Gradients

These gradients show how the YIQ color 189.4820, 39.3850, -3.4230 changes by changing the brightness by 10 percent. The first figure shows a shift by +10% for each color and the second figure -10%.

Similar to the brightness gradients but the following saturation gradients show a change of the YIQ color 189.4820, 39.3850, -3.4230 by changing the saturation by 10% instead.

189.4820, 39.3850,
-3.4230

189.4820, 39.3850,
-3.4230

255.0000, -0.0000,
-0.0000

161.9980, 37.8720,
-3.5360

237.4800, 24.5310,
-9.5570

135.6280, 36.0380,
-3.3380

251.2380, 10.5930,
-10.2630

110.1440, 34.5250,
-3.4510

254.5440, 1.2840,
-1.2440

85.3610, 32.4160,
-3.7760

61.5780, 30.3070,
-4.1010

39.3820, 27.9230,
-4.9490

19.5800, 18.7980,

0.7340

0.0000, 0.0000,
0.0000

189.4820, 39.3850,
-3.4230

189.4820, 39.3850,
-3.4230

179.9300, 49.7470,
-3.9890

199.1480, 28.7020,
-2.5460

170.8510, 60.1550,
-5.3890

208.1130, 18.6150,
-1.4570

161.2990, 70.5170,
-5.9550

217.7790, 7.9320,
-0.5800

151.6330, 81.2000,
-6.8320

227.3310, -2.4300,
-0.0140

142.6680, 91.2870,
-7.9210

236.4100,
-12.8380, 1.3860

■ 133.0020,
101.9700, -8.7980

■ 243.6820,
-16.7800, -4.2680

■ 130.6710,
104.4000, -8.7840

■ 246.0300,
-17.8800, -6.3600

Harmonies

Analogous

The Analogous color harmony consists of three colors that are next to each other on the color wheel.



191.2090, 45.0680, 9.2280



189.4820, 39.3850, -3.4230



187.1330, 23.8900, -14.4620

Triad

The Triadic color harmony groups three colors that are evenly spaced from another and form a triangle on the color wheel.



189.4820, 39.3850, -3.4230



176.7760, -49.8800, -21.1440



192.6910, -2.6630, 20.7370

Complementary

The Complementary color scheme is a pair of colors which are on the opposite of each other on the color wheel.



189.4820, 39.3850, -3.4230



175.5180, -39.3850, 3.4230

Split Complementary

Split-complementary colors differ from the complementary color scheme. The scheme consists of three colors, the original color and two neighbors of the complement color.



188.3500, -29.8040, 11.5080



189.4820, 39.3850, -3.4230



176.4730, -61.8480, -13.4960

Square

The Square scheme is like the rectangle color scheme, but the four colors are evenly spaced on the color wheel.



189.4820, 39.3850, -3.4230



179.7000, -26.3590, -23.4070



181.9400, -52.4970, -1.2410



193.5600, 22.6910, 23.8030

Rectangle

The Rectangle color scheme consists of four colors that form a rectangle on the color wheel.



189.4820, 39.3850, -3.4230



184.7720, 8.6690, -19.4510



181.9400, -52.4970, -1.2410



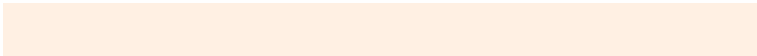
191.7330, -11.6490, 18.3910

Sweetspot

The Sweet Spot groups the original color and five complimentary colors.



189.4820, 39.3850, -3.4230



243.0030, 13.1130, -0.8630



170.5450, 36.2150, 32.0150



120.7790, 7.9320, -0.5800



0.0000, 0.0000, 0.0000



128.0000, -0.0000, -0.0000

Same Dimension

The Same Dimension uses a secret algorithm to generate beautiful new colors.



189.4820, 39.3850, -3.4230



207.2570, 53.1400, -4.9080



213.5490, 28.1100, -24.8660



107.2240, 5.1810, -0.2830



102.5190, 81.5210, -7.1430



27.8530, 22.2830, -1.8530

Inverse Universe

The Inverse Universe completely reimagines the original color for something new.



175.5180, -39.3850, 3.4230



188.3300, -53.4150, 4.3850



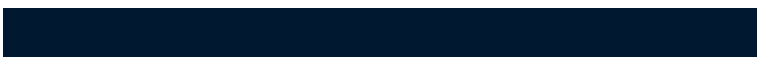
151.4510, -28.1100, 24.8660



105.7760, -5.1810, 0.2830



73.4810, -81.5210, 7.1430



20.1470, -22.2830, 1.8530

Previews

White Background



This preview shows how the YIQ color 189.4820, 39.3850, -3.4230 looks on a white background.

Color Contrast Check

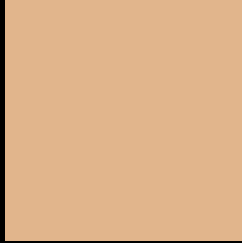
Large Text (above 18pt) WCAG AA × Fail

Any Text WCAG AA × Fail

Large Text (above 18pt) WCAG AAA × Fail

Any Text WCAG AAA × Fail

Black Background



This preview shows how the YIQ color 189.4820, 39.3850, -3.4230 looks on a black background.

Color Contrast Check

Large Text (above 18pt) WCAG AA ✓ Pass

Any Text WCAG AA ✓ Pass

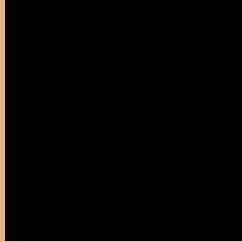
Large Text (above 18pt) WCAG AAA ✓ Pass

Any Text WCAG AAA ✓ Pass

If you want to check with other color combinations, try the [Color Contrast Checker](#).

YIQ 189.4820, 39.3850, -3.4230

Background



This preview shows how black text looks on a background with the YIQ color 189.4820, 39.3850, -3.4230.



This preview shows how white text looks on a background with the YIQ color 189.4820, 39.3850,

-3.4230.

Color Blindness Simulation

Color vision deficiency is a very complex topic, and I could not describe the different causes any better than Wikipedia does, so if you want to learn more, you should check out their [article about color blindness](#).

Dichromacy



Original Color

189.4820, 39.3850, -3.4230

Protanopia

188.0560, 22.7890, -11.0270

Deuteranopia

189.7700, 38.5140, -4.1580



Tritanopia

192.9270, 28.6070, 15.7030

Trichromacy



Original Color

189.4820, 39.3850, -3.4230

Protanomaly

188.5730, 28.7030, -8.0730

Deuteranomaly

189.7700, 38.5140, -4.1580

Tritanomaly

191.5650, 32.3220, 8.9460

Monochromacy



Original Color

189.4820, 39.3850, -3.4230

Achromatopsia

189.0000, -0.0000, -0.0000

Achromatomaly

189.0740, 14.3510, -1.2730

CSS Examples

Text

The CSS property to change the color of the text to YIQ 189.4820, 39.3850, -3.4230 is called "color". The color property can be set on classes, ids or directly on the HTML element.

This example shows how text in the color `rgb(225, 181, 140)` looks like.

```
.text, #text, p{  
    color:rgb(225, 181, 140)  
}
```

If you want to add a text shadow in that color use the text-shadow property, you can generate a text shadow directly with our [CSS Text Shadow Generator](#).

Here you see how black text with a 4 pixel rgb(225, 181, 140) colored shadow looks like.

```
.shadow{ text-shadow: 4px 4px 2px rgb(225, 181, 140) }
```

Border

The CSS property to change the border of an element to YIQ 189.4820, 39.3850, -3.4230 is called "border". The border property can be set on classes, ids or directly on the HTML element.

This example shows the color as border, it can be applied via the CSS property "border" or "border-color".

```
.border, #border, table{ border:4px solid rgb(225, 181, 140) }
```


If only the border color should be changed use the property `border-color`.

```
.border{ border-color:rgb(225, 181, 140) }
```

If you want to add a box shadow in that color use:

Here you see how a box with a 4 pixel `rgb(225, 181, 140)` colored shadow looks like.

```
.boxshadow{ -moz-box-shadow:4px 4px 4px  
4px rgb(225, 181, 140); -webkit-box-  
shadow:4px 4px 4px 4px rgb(225, 181, 140);  
box-shadow:4px 4px 4px 4px rgb(225, 181,  
140) }
```

Background

The CSS property to change the background color of an element to YIQ 189.4820, 39.3850, -3.4230 is called "background". The background property can be set on classes, ids or directly on the HTML element.

```
.background, #background, body{  
background: rgb(225, 181, 140) }
```

If only the background color should be changed can be used:

```
.background{ background-color: rgb(225,  
181, 140) }
```

This example shows the color as background, it is applied via the CSS property "background".

To optimize and compress your CSS code, you can use our [online CSS compressor and optimizer](#) based on csstidy. If you want to create a linear or radial gradient as background or border, check our [CSS Gradient Generator](#).

Hey! You found this booklet interesting? Support Converting Colors with the new Membership Option!

The pro membership hides all ads, plus gives you double the colors in the color bucket, and more awesome pro features!

[Learn more, Memberships starting at \\$2.50/m!](#)

**Follow me
on Twitter!**

@ConvertingColor