

Converting Colors

YIQ(189.6980, 12.6540, 1.9500)

Have a look what the booklet for
YIQ(189.6980, 12.6540, 1.9500)
contains.

YIQ(189.6980, 12.6540, 1.9500)	3
<i>Conversions</i>	4
<i>Details</i>	6
<i>Harmonies</i>	12
<i>Previews</i>	24
<i>Color Blindness Simulation</i>	28
<i>CSS Examples</i>	31

Color

**YIQ(189.6980, 12.6540,
1.9500)**

Conversions

Conversions Part 1

Format	Color
Hex	CBB9B3
RGB	203, 185, 179
RGB Percent	80%, 73%, 70%
CMY	0.2039, 0.2745, 0.2980
CMYK	0.00, 0.09, 0.12, 0.20
HSL	15°, 19%, 75%
HSV	15°, 12%, 80%
XYZ	50.1168, 50.6479, 49.7898
YIQ	189.6980, 12.6540, 1.9500

Conversions

Conversions Part 2

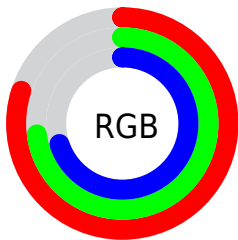
Format	Color
R _Y B	203, 187, 179
Decimal	13351347
CIE Lab	76.47, 5.38, 5.34
CIE LCh	76, 7.583, 44.758
Yxy	50.6479, 0.3329, 0.3364
Android (android.graphics.Color)	4291541427 (0xFFCBB9B3)
YUV	189.6980, -5.2741, 11.6659
Hunter-Lab	71.1673, 1.1587, 8.3369

Details

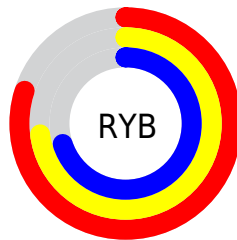
The YIQ color **189.6980, 12.6540, 1.9500** is a light color, and the websafe version is hex **CCCCCC**. A complement of this color would be **192.3020, -12.6540, -1.9500**, and the grayscale version is **190.0000, -0.0000, -0.0000**.

A 20% lighter version of the original color is **244.5020, 10.2700, 1.1020**, and **136.3990, 12.0580, 1.7380** is the 20% darker color. If you saturate the color by 10%, you get **178.6130, 23.1990, 3.5750**, and if you desaturate by 10%, it is **200.7830, 2.1090, 0.3250**.

Distribution



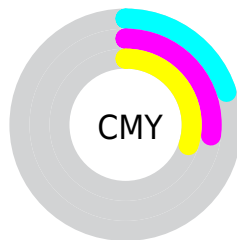
- Red (80%)
- Green (73%)
- Blue (70%)



- Red (80%)
- Yellow (73%)
- Blue (70%)



- Cyan (0%)
- Magenta (9%)
- Yellow (12%)
- Black (20%)



- Cyan (20%)
- Magenta (27%)
- Yellow (30%)

Brightness & Saturation Gradients

These gradients show how the YIQ color 189.6980, 12.6540, 1.9500 changes by changing the brightness by 10 percent. The first figure shows a shift by +10% for each color and the second figure -10%.

Similar to the brightness gradients but the following saturation gradients show a change of the YIQ color 189.6980, 12.6540, 1.9500 by changing the saturation by 10% instead.

■ 189.6980, 12.6540,
1.9500

■ 189.6980, 12.6540,
1.9500

255.0000, -0.0000,
-0.0000

■ 162.6980, 12.6540,
1.9500

■ 244.5020, 10.2700,
1.1020

■ 136.3990, 12.0580,
1.7380

■ 111.1000, 11.4620,
1.5260

■ 86.8010, 10.8660,
1.3140

■ 63.6160, 9.9490,
1.4130

■ 41.3170, 9.3530,
1.2010

■ 20.2030, 9.6740,

0.8900

0.0000, 0.0000,
0.0000

189.6980, 12.6540,
1.9500

189.6980, 12.6540,
1.9500

178.6130, 23.1990,
3.5750

200.7830, 2.1090,
0.3250

167.4140, 34.0650,
4.8890

211.9820, -8.7570,
-0.9890

155.7420, 44.8850,
7.0370

223.6540,
-19.5770, -3.1370

144.6570, 55.4300,
8.6620

234.1690,
-28.5170, -6.3170

133.5720, 65.9750,
10.2870

239.4520,
-30.9920, -11.0240

■ 122.3730, 76.8410,
11.6010

■ 110.7010, 87.6610,
13.7490

■ 99.6160, 98.2060,
15.3740

■ 90.6340, 106.9630,
16.3630

Harmonies

Analogous

The Analogous color harmony consists of three colors that are next to each other on the color wheel.



190.0940, 11.5990, 4.5510



189.6980, 12.6540, 1.9500



188.9210, 10.4080, -1.4000

Triad

The Triadic color harmony groups three colors that are evenly spaced from another and form a triangle on the color wheel.



189.6980, 12.6540, 1.9500



187.0050, -7.5640, -6.0920



188.9980, -5.6860, 3.9300

Complementary

The Complementary color scheme is a pair of colors which are on the opposite of each other on the color wheel.



189.6980, 12.6540, 1.9500



192.3020, -12.6540, -1.9500

Split Complementary

Split-complementary colors differ from the complementary color scheme. The scheme consists of three colors, the original color and two neighbors of the complement color.



187.7800, -11.0040, 1.1880



189.6980, 12.6540, 1.9500



186.6070, -12.1950, -4.7630

Square

The Square scheme is like the rectangle color scheme, but the four colors are evenly spaced on the color wheel.



189.6980, 12.6540, 1.9500



187.2400, -0.9160, -5.4280



187.0030, -13.2500, -2.1620



189.8740, 0.5950, 5.7390

Rectangle

The Rectangle color scheme consists of four colors that form a rectangle on the color wheel.



189.6980, 12.6540, 1.9500



188.3120, 7.7490, -2.7710



187.0030, -13.2500, -2.1620



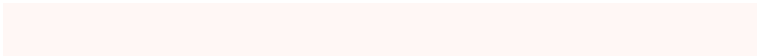
188.6880, -7.7490, 2.7710

Sweetspot

The Sweet Spot groups the original color and five complimentary colors.



189.6980, 12.6540, 1.9500



249.1640, 5.4100, 1.0740



188.2280, 8.5260, 10.6860



124.2670, 3.6220, 0.4380



0.0000, 0.0000, 0.0000



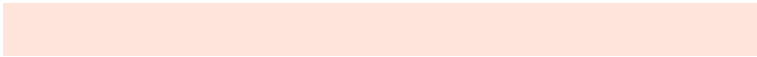
128.0000, -0.0000, -0.0000

Same Dimension

The Same Dimension uses a secret algorithm to generate beautiful new colors.



189.6980, 12.6540, 1.9500



235.0470, 18.9810, 2.9250



196.7420, 9.3540, -4.3260



96.1640, 5.4100, 1.0740



73.7010, 87.6610, 13.7490



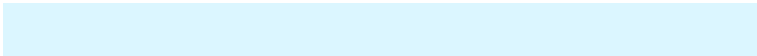
17.2320, 19.8980, 2.8260

Inverse Universe

The Inverse Universe completely reimagines the original color for something new.



192.3020, -12.6540, -1.9500



238.9530, -18.9810, -2.9250



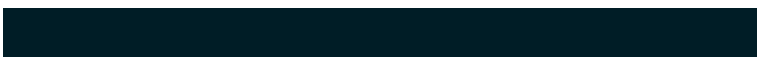
185.2580, -9.3540, 4.3260



97.2490, -5.1350, -0.5510



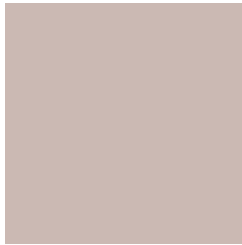
91.7120, -87.3860, -13.2260



21.3550, -20.1730, -3.3490

Previews

White Background



This preview shows how the YIQ color 189.6980, 12.6540, 1.9500 looks on a white background.

Color Contrast Check

Large Text (above 18pt) WCAG AA × Fail

Any Text WCAG AA × Fail

Large Text (above 18pt) WCAG AAA × Fail

Any Text WCAG AAA × Fail

Black Background



This preview shows how the YIQ color 189.6980, 12.6540, 1.9500 looks on a black background.

Color Contrast Check

Large Text (above 18pt) WCAG AA ✓ Pass

Any Text WCAG AA ✓ Pass

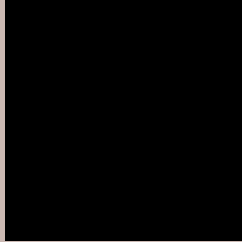
Large Text (above 18pt) WCAG AAA ✓ Pass

Any Text WCAG AAA ✓ Pass

If you want to check with other color combinations, try the [Color Contrast Checker](#).

YIQ 189.6980, 12.6540, 1.9500

Background



This preview shows how black text looks on a background with the YIQ color 189.6980, 12.6540, 1.9500.



This preview shows how white text looks on a background with the YIQ color 189.6980, 12.6540,

1.9500.

Color Blindness Simulation

Color vision deficiency is a very complex topic, and I could not describe the different causes any better than Wikipedia does, so if you want to learn more, you should check out their [article about color blindness](#).

Dichromacy



Original Color

189.6980, 12.6540, 1.9500

Protanopia

188.9960, 5.8230, -0.9050

Deuteranopia

190.1440, 17.3300, 5.3140



Tritanopia

190.5870, 8.8930, 9.5410

Trichromacy



Original Color

189.6980, 12.6540, 1.9500

Protanomaly

189.1920, 8.2070, -0.0570

Deuteranomaly

189.8340, 15.2670, 4.1550

Tritanomaly

190.0770, 10.2690, 6.6290

Monochromacy



Original Color

189.6980, 12.6540, 1.9500

Achromatopsia

190.0000, -0.0000, -0.0000

Achromatomaly

189.8650, 4.8140, 0.8620

CSS Examples

Text

The CSS property to change the color of the text to YIQ 189.6980, 12.6540, 1.9500 is called "color". The color property can be set on classes, ids or directly on the HTML element.

This example shows how text in the color `rgb(203, 185, 179)` looks like.

```
.text, #text, p{  
    color:rgb(203, 185, 179)  
}
```

If you want to add a text shadow in that color use the text-shadow property, you can generate a text shadow directly with our [CSS Text Shadow Generator](#).

Here you see how black text with a 4 pixel rgb(203, 185, 179) colored shadow looks like.

```
.shadow{ text-shadow: 4px 4px 2px rgb(203, 185, 179) }
```

Border

The CSS property to change the border of an element to YIQ 189.6980, 12.6540, 1.9500 is called "border". The border property can be set on classes, ids or directly on the HTML element.

This example shows the color as border, it can be applied via the CSS property "border" or "border-color".

```
.border, #border, table{ border:4px solid rgb(203, 185, 179) }
```


If only the border color should be changed use the property `border-color`.

```
.border{ border-color:rgb(203, 185, 179) }
```

If you want to add a box shadow in that color use:

Here you see how a box with a 4 pixel `rgb(203, 185, 179)` colored shadow looks like.

```
.boxshadow{ -moz-box-shadow:4px 4px 4px  
4px rgb(203, 185, 179); -webkit-box-  
shadow:4px 4px 4px 4px rgb(203, 185, 179);  
box-shadow:4px 4px 4px 4px rgb(203, 185,  
179) }
```

Background

The CSS property to change the background color of an element to YIQ 189.6980, 12.6540, 1.9500 is called "background". The background property can be set on classes, ids or directly on the HTML element.

```
.background, #background, body{  
background: rgb(203, 185, 179) }
```

If only the background color should be changed can be used:

```
.background{ background-color: rgb(203,  
185, 179) }
```

This example shows the color as background, it is applied via the CSS property "background".

To optimize and compress your CSS code, you can use our [online CSS compressor and optimizer](#) based on csstidy. If you want to create a linear or radial gradient as background or border, check our [CSS Gradient Generator](#).

Hey! You found this booklet interesting? Support Converting Colors with the new Membership Option!

The pro membership hides all ads, plus gives you double the colors in the color bucket, and more awesome pro features!

[Learn more, Memberships starting at \\$2.50/m!](#)

**Follow me
on Twitter!**

@ConvertingColor