

Converting Colors

YIQ(19.3880, 10.5910, 0.7910)

Have a look what the booklet for
YIQ(19.3880, 10.5910, 0.7910)
contains.

YIQ(19.3880, 10.5910, 0.7910)	3
<i>Conversions</i>	4
<i>Details</i>	6
<i>Harmonies</i>	12
<i>Previews</i>	24
<i>Color Blindness Simulation</i>	28
<i>CSS Examples</i>	31

Color

**YIQ(19.3880, 10.5910,
0.7910)**

Conversions

Conversions Part 1

Format	Color
Hex	1E1009
RGB	30, 16, 9
RGB Percent	12%, 6%, 4%
CMY	0.8823, 0.9373, 0.9647
CMYK	0.00, 0.47, 0.70, 0.88
HSL	20°, 54%, 8%
HSV	20°, 70%, 12%
XYZ	0.7702, 0.6663, 0.3468
YIQ	19.3880, 10.5910, 0.7910

Conversions

Conversions Part 2

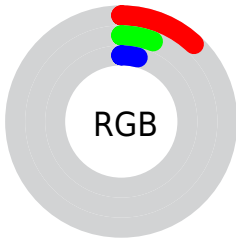
Format	Color
RYB	30, 20, 9
Decimal	1970185
CIELab	6.02, 5.61, 5.42
CIElCh	6, 7.797, 43.998
Yxy	0.6663, 0.4319, 0.3736
Android (android.graphics.Color)	4280160265 (0xFF1E1009)
YUV	19.3880, -5.1213, 9.3067
Hunter-Lab	8.1626, 2.5583, 3.1948

Details

The YIQ color **19.3880, 10.5910, 0.7910** is a dark color, and the websafe version is hex **000000**. A complement of this color would be **19.6120, -10.5910, -0.7910**, and the grayscale version is **19.0000, -0.0000, -0.0000**.

A 20% lighter version of the original color is **62.0290, 10.2240, 1.9360**, and **0.0000, 0.0000, 0.0000** is the 20% darker color. If you saturate the color by 10%, you get **17.8720, 12.1040, 0.9040**, and if you desaturate by 10%, it is **20.9040, 9.0780, 0.6780**.

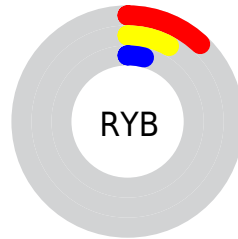
Distribution



Red (12%)

Green (6%)

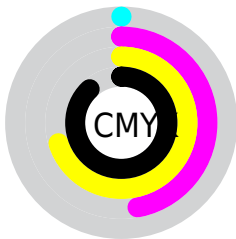
Blue (4%)



Red (12%)

Yellow (8%)

Blue (4%)

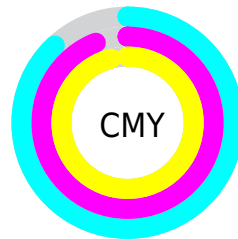


Cyan (0%)

Magenta (47%)

Yellow (70%)

Black (88%)



Cyan (88%)

Magenta (94%)

Yellow (96%)

Brightness & Saturation Gradients

These gradients show how the YIQ color 19.3880, 10.5910, 0.7910 changes by changing the brightness by 10 percent. The first figure shows a shift by +10% for each color and the second figure -10%.

Similar to the brightness gradients but the following saturation gradients show a change of the YIQ color 19.3880, 10.5910, 0.7910 by changing the saturation by 10% instead.

■ 19.3880, 10.5910,
0.7910

■ 19.3880, 10.5910,
0.7910

■ 243.6870, 11.1870,
1.0030

■ 0.0000, 0.0000,
0.0000

■ 62.0290, 10.2240,
1.9360

■ 85.2140, 11.1410,
1.8370

■ 110.1000, 11.4620,
1.5260

■ 135.3990, 12.0580,
1.7380

■ 161.6980, 12.6540,
1.9500

■ 188.6980, 12.6540,

1.9500

■ 215.9970, 13.2500,
2.1620

■ 19.3880, 10.5910,
0.7910

■ 19.3880, 10.5910,
0.7910

■ 17.8720, 12.1040,
0.9040

■ 20.9040, 9.0780,
0.6780

■ 16.3560, 13.6170,
1.0170

■ 22.4200, 7.5650,
0.5650

■ 14.8400, 15.1300,
1.1300

■ 23.9360, 6.0520,
0.4520

■ 25.4520, 4.5390,
0.3390

■ 26.9680, 3.0260,
0.2260

■ 28.4840, 1.5130,
0.1130

■ 30.0000, -0.0000,
-0.0000

■ 31.5160, -1.5130,
-0.1130

■ 33.0320, -3.0260,
-0.2260

Harmonies

Analogous

The Analogous color harmony consists of three colors that are next to each other on the color wheel.



19.5990, 8.6190, 3.4910



19.3880, 10.5910, 0.7910



19.0950, 9.8580, -2.4460

Triad

The Triadic color harmony groups three colors that are evenly spaced from another and form a triangle on the color wheel.



19.3880, 10.5910, 0.7910



16.7060, -8.1600, -6.3040



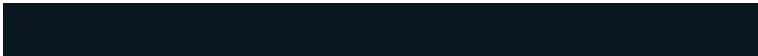
19.2430, -4.9980, 2.4740

Complementary

The Complementary color scheme is a pair of colors which are on the opposite of each other on the color wheel.



19.3880, 10.5910, 0.7910



19.6120, -10.5910, -0.7910

Split Complementary

Split-complementary colors differ from the complementary color scheme. The scheme consists of three colors, the original color and two neighbors of the complement color.



17.7260, -10.9120, -0.4800



19.3880, 10.5910, 0.7910



16.0090, -13.3870, -5.1870

Square

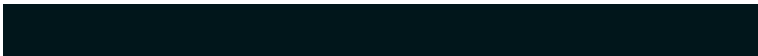
The Square scheme is like the rectangle color scheme, but the four colors are evenly spaced on the color wheel.



19.3880, 10.5910, 0.7910



18.0120, -0.2740, -6.0500



16.2910, -14.1210, -2.8970



20.2330, 0.9620, 4.5940

Rectangle

The Rectangle color scheme consists of four colors that form a rectangle on the color wheel.



19.3880, 10.5910, 0.7910



18.6710, 8.1160, -3.9160



16.2910, -14.1210, -2.8970



19.3460, -6.7860, 1.8380

Sweetspot

The Sweet Spot groups the original color and five complimentary colors.



19.3880, 10.5910, 0.7910



34.1530, 3.9430, 0.1270



16.8750, 8.0220, 8.8060



17.6690, 2.4300, 0.0140



148.0000, -0.0000, 0.0000



20.0000, 0.0000, -0.0000

Same Dimension

The Same Dimension uses a secret algorithm to generate beautiful new colors.



19.3880, 10.5910, 0.7910



22.0250, 16.0470, 1.0310



25.2580, 7.8410, -4.4390



14.2990, 0.5960, 0.2120



38.8830, 39.9340, 3.1500



102.3960, 104.3970, 7.7970

Inverse Universe

The Inverse Universe completely reimagines the original color for something new.



19.6120, -10.5910, -0.7910



22.5620, -16.3220, -1.5540



13.7420, -7.8410, 4.4390



14.7010, -0.5960, -0.2120



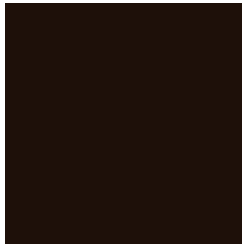
40.1170, -39.9340, -3.1500



104.6040, -104.3970, -7.7970

Previews

White Background



This preview shows how the YIQ color 19.3880, 10.5910, 0.7910 looks on a white background.

Color Contrast Check

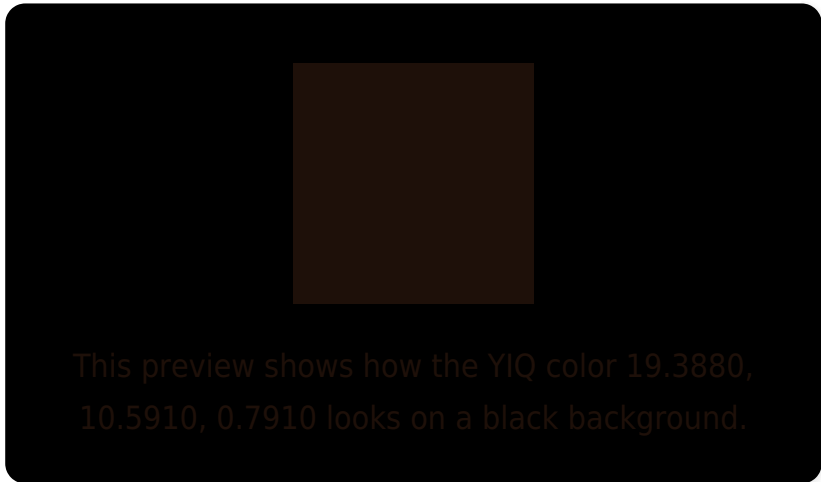
Large Text (above 18pt) WCAG AA ✓ Pass

Any Text WCAG AA ✓ Pass

Large Text (above 18pt) WCAG AAA ✓ Pass

Any Text WCAG AAA ✓ Pass

Black Background



Color Contrast Check

Large Text (above 18pt) WCAG AA × Fail

Any Text WCAG AA × Fail

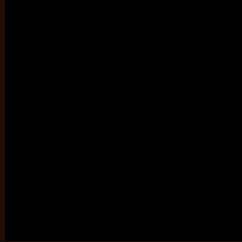
Large Text (above 18pt) WCAG AAA × Fail

Any Text WCAG AAA × Fail

If you want to check with other color combinations, try the [Color Contrast Checker](#).

YIQ 19.3880, 10.5910, 0.7910

Background



This preview shows how black text looks on a background with the YIQ color 19.3880, 10.5910, 0.7910.



This preview shows how white text looks on a background with the YIQ color 19.3880, 10.5910,

0.7910.

Color Blindness Simulation

Color vision deficiency is a very complex topic, and I could not describe the different causes any better than Wikipedia does, so if you want to learn more, you should check out their [article about color blindness](#).

Dichromacy



Original Color

19.3880, 10.5910, 0.7910

Protanopia

19.4580, 4.4020, -2.6860

Deuteranopia

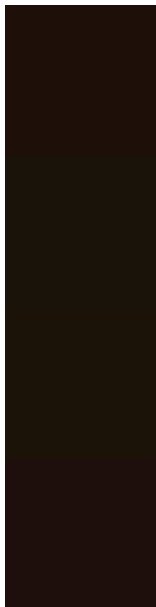
19.5400, 7.1070, -2.1490



Tritanopia

19.5990, 8.6190, 3.4910

Trichromacy



Original Color

19.3880, 10.5910, 0.7910

Protanomaly

19.7680, 6.4650, -1.5270

Deuteranomaly

19.5510, 8.5740, -1.2020

Tritanomaly

19.2570, 9.5820, 2.5580

Monochromacy



Original Color

19.3880, 10.5910, 0.7910

Achromatopsia

19.0000, -0.0000, -0.0000

Achromatomaly

19.1530, 3.9430, 0.1270

CSS Examples

Text

The CSS property to change the color of the text to YIQ 19.3880, 10.5910, 0.7910 is called "color". The color property can be set on classes, ids or directly on the HTML element.

This example shows how text in the color `rgb(30, 16, 9)` looks like.

```
.text, #text, p{  
    color:rgb(30, 16, 9)  
}
```

If you want to add a text shadow in that color use the text-shadow property, you can generate a text shadow directly with our [CSS Text Shadow Generator](#).

Here you see how black text with a 4 pixel rgb(30, 16, 9) colored shadow looks like.

```
.shadow{ text-shadow: 4px 4px 2px rgb(30, 16, 9) }
```

Border

The CSS property to change the border of an element to YIQ 19.3880, 10.5910, 0.7910 is called "border". The border property can be set on classes, ids or directly on the HTML element.

This example shows the color as border, it can be applied via the CSS property "border" or "border-color".

```
.border, #border, table{ border:4px solid rgb(30, 16, 9) }
```


If only the border color should be changed use the property `border-color`.

```
.border{ border-color:rgb(30, 16, 9) }
```

If you want to add a box shadow in that color use:

Here you see how a box with a 4 pixel `rgb(30, 16, 9)` colored shadow looks like.

```
.boxshadow{ -moz-box-shadow:4px 4px 4px  
4px rgb(30, 16, 9); -webkit-box-shadow:4px  
4px 4px 4px rgb(30, 16, 9); box-shadow:4px  
4px 4px 4px rgb(30, 16, 9) }
```

Background

The CSS property to change the background color of an element to YIQ 19.3880, 10.5910, 0.7910 is called "background". The background property can be set on classes, ids or directly on the HTML element.

```
.background, #background, body{  
background: rgb(30, 16, 9) }
```

If only the background color should be changed can be used:

```
.background{ background-color: rgb(30, 16,  
9) }
```

This example shows the color as background, it is applied via the CSS property "background".

To optimize and compress your CSS code, you can use our [online CSS compressor and optimizer](#) based on csstidy. If you want to create a linear or radial gradient as background or border, check our [CSS Gradient Generator](#).

Hey! You found this booklet interesting? Support Converting Colors with the new Membership Option!

The pro membership hides all ads, plus gives you double the colors in the color bucket, and more awesome pro features!

[Learn more, Memberships starting at \\$2.50/m!](#)

**Follow me
on Twitter!**

@ConvertingColor