

Converting Colors

YIQ(190.1270, 16.0000, 7.3920)

Have a look what the booklet for
YIQ(190.1270, 16.0000, 7.3920)
contains.

YIQ(190.1270, 16.0000, 7.3920)	3
<i>Conversions</i>	4
<i>Details</i>	6
<i>Harmonies</i>	12
<i>Previews</i>	24
<i>Color Blindness Simulation</i>	28
<i>CSS Examples</i>	31

Color

**YIQ(190.1270, 16.0000,
7.3920)**

Conversions

Conversions Part 1

Format	Color
Hex	D2B5B9
RGB	210, 181, 185
RGB Percent	82%, 71%, 73%
CMY	0.1764, 0.2902, 0.2744
CMYK	0.00, 0.14, 0.12, 0.18
HSL	352°, 24%, 77%
HSV	352°, 14%, 82%
XYZ	51.8635, 50.2505, 52.8733
YIQ	190.1270, 16.0000, 7.3920

Conversions

Conversions Part 2

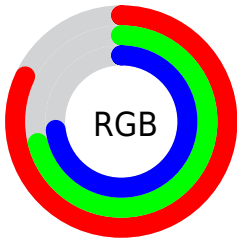
Format	Color
R _Y B	210, 181, 185
Decimal	13809081
CIE Lab	76.22, 11.07, 1.80
CIE LCh	76, 11.215, 9.256
Yxy	50.2505, 0.3346, 0.3242
Android (android.graphics.Color)	4291999161 (0xFFD2B5B9)
YUV	190.1270, -2.5276, 17.4286
Hunter-Lab	70.8876, 6.5426, 5.3984

Details

The YIQ color **190.1270, 16.0000, 7.3920** is a light color, and the websafe version is hex **CCCCCC**. A complement of this color would be **200.8730, -16.0000, -7.3920**, and the grayscale version is **190.0000, -0.0000, -0.0000**.

A 20% lighter version of the original color is **242.8380, 9.4440, 5.0600**, and **136.5290, 14.8080, 6.9680** is the 20% darker color. If you saturate the color by 10%, you get **175.7480, 27.5530, 12.7770**, and if you desaturate by 10%, it is **204.5060, 4.4470, 2.0070**.

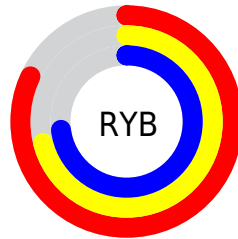
Distribution



Red (82%)

Green (71%)

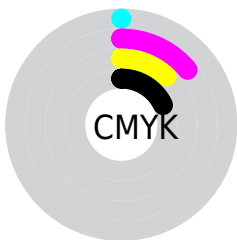
Blue (73%)



Red (82%)

Yellow (71%)

Blue (73%)

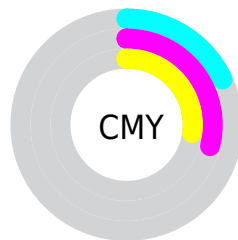


Cyan (0%)

Magenta (14%)

Yellow (12%)

Black (18%)



Cyan (18%)

Magenta (29%)

Yellow (27%)

Brightness & Saturation Gradients

These gradients show how the YIQ color 190.1270, 16.0000, 7.3920 changes by changing the brightness by 10 percent. The first figure shows a shift by +10% for each color and the second figure -10%.

Similar to the brightness gradients but the following saturation gradients show a change of the YIQ color 190.1270, 16.0000, 7.3920 by changing the saturation by 10% instead.

■ 190.1270, 16.0000,
7.3920

■ 190.1270, 16.0000,
7.3920

255.0000, -0.0000,
-0.0000

■ 162.8280, 15.4040,
7.1800

■ 242.8380, 9.4440,
5.0600

■ 136.5290, 14.8080,
6.9680

■ 111.2300, 14.2120,
6.7560

■ 86.9310, 13.6160,
6.5440

■ 63.3330, 12.4240,
6.1200

■ 41.0340, 11.8280,
5.9080

■ 19.7350, 11.2320,

5.6960

■ 0.0000, 0.0000,
0.0000

■ 190.1270, 16.0000,
7.3920

■ 190.1270, 16.0000,
7.3920

■ 175.7480, 27.5530,
12.7770

■ 204.5060, 4.4470,
2.0070

■ 161.3690, 39.1060,
18.1620

■ 218.8850, -7.1060,
-3.3780

■ 146.9900, 50.6590,
23.5470

■ 233.2640,
-18.6590, -8.7630

■ 132.6110, 62.2120,
28.9320

■ 241.5450,
-26.8200, -9.5400

■ 118.2320, 73.7650,
34.3170

■ 103.7390, 85.6390,
39.3910

■ 89.3600, 97.1920,
44.7760

■ 74.9810, 108.7450,
50.1610

■ 66.0960, 115.8510,
53.5390

Harmonies

Analogous

The Analogous color harmony consists of three colors that are next to each other on the color wheel.



190.4730, 9.2140, 9.2300



190.1270, 16.0000, 7.3920



189.5740, 18.9350, 3.7590

Triad

The Triadic color harmony groups three colors that are evenly spaced from another and form a triangle on the color wheel.



190.1270, 16.0000, 7.3920



185.8440, 0.1390, -8.0290



186.2460, -18.2480, 0.3120

Complementary

The Complementary color scheme is a pair of colors which are on the opposite of each other on the color wheel.



190.1270, 16.0000, 7.3920



200.8730, -16.0000, -7.3920

Split Complementary

Split-complementary colors differ from the complementary color scheme. The scheme consists of three colors, the original color and two neighbors of the complement color.



184.9420, -20.4480, -3.8720



190.1270, 16.0000, 7.3920



185.2280, -9.8100, -9.4420

Square

The Square scheme is like the rectangle color scheme, but the four colors are evenly spaced on the color wheel.



190.1270, 16.0000, 7.3920



187.2150, 9.4000, -5.1600



184.3890, -17.5130, -7.5050



188.1870, -10.5920, 4.7360

Rectangle

The Rectangle color scheme consists of four colors that form a rectangle on the color wheel.



190.1270, 16.0000, 7.3920



189.0960, 17.2850, 0.6210



184.3890, -17.5130, -7.5050



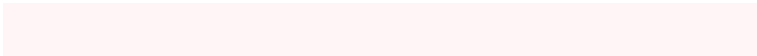
185.7080, -19.6690, -1.4690

Sweetspot

The Sweet Spot groups the original color and five complimentary colors.



190.1270, 16.0000, 7.3920



248.1040, 5.6390, 2.4310



191.7810, 5.5910, 14.3190



123.2070, 3.8510, 1.7950



0.0000, 0.0000, 0.0000



128.0000, -0.0000, -0.0000

Same Dimension

The Same Dimension uses a secret algorithm to generate beautiful new colors.



190.1270, 16.0000, 7.3920



225.5410, 23.7020, 10.9820



195.5410, 14.5340, 0.9180



97.5170, 5.9140, 2.9540



52.8540, 92.7450, 42.7690



12.9430, 22.5100, 10.5580

Inverse Universe

The Inverse Universe completely reimagines the original color for something new.



190.1270, 16.0000, 7.3920



225.5410, 23.7020, 10.9820



195.4590, -14.5340, -0.9180



97.5170, 5.9140, 2.9540



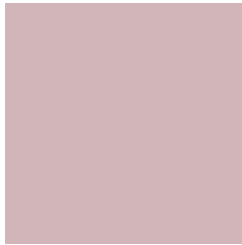
52.8540, 92.7450, 42.7690



12.9430, 22.5100, 10.5580

Previews

White Background



This preview shows how the YIQ color 190.1270, 16.0000, 7.3920 looks on a white background.

Color Contrast Check

Large Text (above 18pt) WCAG AA × Fail

Any Text WCAG AA × Fail

Large Text (above 18pt) WCAG AAA × Fail

Any Text WCAG AAA × Fail

Black Background



This preview shows how the YIQ color 190.1270, 16.0000, 7.3920 looks on a black background.

Color Contrast Check

Large Text (above 18pt) WCAG AA ✓ Pass

Any Text WCAG AA ✓ Pass

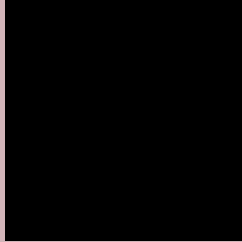
Large Text (above 18pt) WCAG AAA ✓ Pass

Any Text WCAG AAA ✓ Pass

If you want to check with other color combinations, try the [Color Contrast Checker](#).

YIQ 190.1270, 16.0000, 7.3920

Background



This preview shows how black text looks on a background with the YIQ color 190.1270, 16.0000, 7.3920.



This preview shows how white text looks on a background with the YIQ color 190.1270, 16.0000,

Color Blindness Simulation

Color vision deficiency is a very complex topic, and I could not describe the different causes any better than Wikipedia does, so if you want to learn more, you should check out their [article about color blindness](#).

Dichromacy



Original Color

190.1270, 16.0000, 7.3920

Protanopia

188.4240, 1.7420, 1.4700

Deuteranopia

189.8170, 13.9370, 6.2330



Tritanopia

190.8650, 13.9820, 10.9260

Trichromacy



Original Color

190.1270, 16.0000, 7.3920

Protanomaly

189.2290, 6.7850, 3.6890

Deuteranomaly

190.1160, 14.5330, 6.4450

Tritanomaly

190.5230, 14.9450, 9.9930

Monochromacy



Original Color

190.1270, 16.0000, 7.3920

Achromatopsia

190.0000, -0.0000, -0.0000

Achromatomaly

190.1040, 5.6390, 2.4310

CSS Examples

Text

The CSS property to change the color of the text to YIQ 190.1270, 16.0000, 7.3920 is called "color". The color property can be set on classes, ids or directly on the HTML element.

This example shows how text in the color `rgb(210, 181, 185)` looks like.

```
.text, #text, p{  
    color:rgb(210, 181, 185)  
}
```

If you want to add a text shadow in that color use the text-shadow property, you can generate a text shadow directly with our [CSS Text Shadow Generator](#).

Here you see how black text with a 4 pixel rgb(210, 181, 185) colored shadow looks like.

```
.shadow{ text-shadow: 4px 4px 2px rgb(210, 181, 185) }
```

Border

The CSS property to change the border of an element to YIQ 190.1270, 16.0000, 7.3920 is called "border". The border property can be set on classes, ids or directly on the HTML element.

This example shows the color as border, it can be applied via the CSS property "border" or "border-color".

```
.border, #border, table{ border:4px solid rgb(210, 181, 185) }
```


If only the border color should be changed use the property `border-color`.

```
.border{ border-color:rgb(210, 181, 185) }
```

If you want to add a box shadow in that color use:

Here you see how a box with a 4 pixel `rgb(210, 181, 185)` colored shadow looks like.

```
.boxshadow{ -moz-box-shadow:4px 4px 4px  
4px rgb(210, 181, 185); -webkit-box-  
shadow:4px 4px 4px 4px rgb(210, 181, 185);  
box-shadow:4px 4px 4px 4px rgb(210, 181,  
185) }
```

Background

The CSS property to change the background color of an element to YIQ 190.1270, 16.0000, 7.3920 is called "background". The background property can be set on classes, ids or directly on the HTML element.

```
.background, #background, body{  
background: rgb(210, 181, 185) }
```

If only the background color should be changed can be used:

```
.background{ background-color: rgb(210,  
181, 185) }
```

This example shows the color as background, it is applied via the CSS property "background".

To optimize and compress your CSS code, you can use our [online CSS compressor and optimizer](#) based on csstidy. If you want to create a linear or radial gradient as background or border, check our [CSS Gradient Generator](#).

Hey! You found this booklet interesting? Support Converting Colors with the new Membership Option!

The pro membership hides all ads, plus gives you double the colors in the color bucket, and more awesome pro features!

[Learn more, Memberships starting at \\$2.50/m!](#)

**Follow me
on Twitter!**

@ConvertingColor