

Converting Colors

YIQ(190.4640, 30.6280, -4.4120)

Have a look what the booklet for
YIQ(190.4640, 30.6280, -4.4120)
contains.

YIQ(190.4640, 30.6280, -4.4120)	3
<i>Conversions</i>	4
<i>Details</i>	6
<i>Harmonies</i>	12
<i>Previews</i>	24
<i>Color Blindness Simulation</i>	28
<i>CSS Examples</i>	31

Color

**YIQ(190.4640, 30.6280,
-4.4120)**

Conversions

Conversions Part 1

Format	Color
Hex	D9B995
RGB	217, 185, 149
RGB Percent	85%, 73%, 58%
CMY	0.1490, 0.2745, 0.4155
CMYK	0.00, 0.15, 0.31, 0.15
HSL	32°, 47%, 72%
HSV	32°, 31%, 85%
XYZ	51.3933, 51.6172, 35.7041
YIQ	190.4640, 30.6280, -4.4120

Conversions

Conversions Part 2

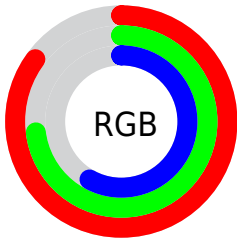
Format	Color
R _Y B	209, 217, 149
Decimal	14268821
CIE Lab	77.05, 6.26, 22.52
CIE LCh	77, 23.371, 74.466
Yxy	51.6172, 0.3705, 0.3721
Android (android.graphics.Color)	4292458901 (0xFFD9B995)
YUV	190.4640, -20.4418, 23.2721
Hunter-Lab	71.8451, 1.9583, 20.8268

Details

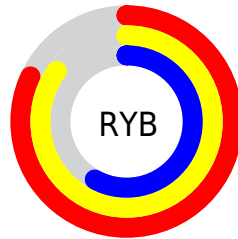
The YIQ color $190.4640, 30.6280, -4.4120$ is a light color, and the websafe version is hex FFCC99 . A complement of this color would be $175.5360, -30.6280, 4.4120$, and the grayscale version is $191.0000, -0.0000, -0.0000$.

A 20% lighter version of the original color is $240.8540, 20.5420, -8.8500$, and $136.7950, 28.1980, -4.4260$ is the 20% darker color. If you saturate the color by 10%, you get $182.0860, 40.4400, -6.0240$, and if you desaturate by 10%, it is $198.8420, 20.8160, -2.8000$.

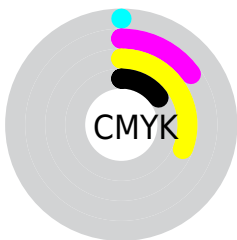
Distribution



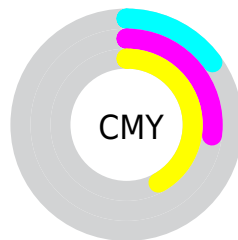
- Red (85%)
- Green (73%)
- Blue (58%)



- Red (82%)
- Yellow (85%)
- Blue (58%)



- Cyan (0%)
- Magenta (15%)
- Yellow (31%)
- Black (15%)



- Cyan (15%)
- Magenta (27%)
- Yellow (42%)

Brightness & Saturation Gradients

These gradients show how the YIQ color 190.4640, 30.6280, -4.4120 changes by changing the brightness by 10 percent. The first figure shows a shift by +10% for each color and the second figure -10%.

Similar to the brightness gradients but the following saturation gradients show a change of the YIQ color 190.4640, 30.6280, -4.4120 by changing the saturation by 10% instead.

■ 190.4640, 30.6280,
-4.4120

■ 190.4640, 30.6280,
-4.4120

255.0000, -0.0000,
-0.0000

■ 163.2790, 29.7110,
-4.3130

■ 240.8540, 20.5420,
-8.8500

■ 136.7950, 28.1980,
-4.4260

■ 252.3780, 7.3830,
-7.1530

■ 111.3110, 26.6850,
-4.5390

■ 86.8270, 25.1720,
-4.6520

■ 63.3430, 23.6590,
-4.7650

■ 40.6310, 22.7880,
-5.5000

■ 21.0310, 15.9100,

-1.9940

■ 0.0000, 0.0000,
0.0000

■ 190.4640, 30.6280,
-4.4120

■ 190.4640, 30.6280,
-4.4120

■ 182.0860, 40.4400,
-6.0240

■ 198.8420, 20.8160,
-2.8000

■ 173.8220, 49.9310,
-7.3250

■ 207.1060, 11.3250,
-1.4990

■ 164.8570, 60.0180,
-8.4140

■ 216.0710, 1.2380,
-0.4100

■ 156.4790, 69.8300,
-10.0260

■ 224.4490, -8.5740,
1.2020

■ 148.2150, 79.3210,
-11.3270

■ 232.4850,
-17.4230, 1.8810

■ 139.8370, 89.1330,
-12.9390

■ 238.3550,
-20.1730, -3.3490

■ 132.3880, 97.7070,
-14.1410

■ 243.6380,
-22.6480, -8.0560

Harmonies

Analogous

The Analogous color harmony consists of three colors that are next to each other on the color wheel.



191.9090, 37.0450, 5.9490



190.4640, 30.6280, -4.4120



188.1800, 16.5080, -12.8360

Triad

The Triadic color harmony groups three colors that are evenly spaced from another and form a triangle on the color wheel.



190.4640, 30.6280, -4.4120



181.4290, -41.3530, -15.9850



193.3340, 2.6560, 17.9520

Complementary

The Complementary color scheme is a pair of colors which are on the opposite of each other on the color wheel.



190.4640, 30.6280, -4.4120



175.5360, -30.6280, 4.4120

Split Complementary

Split-complementary colors differ from the complementary color scheme. The scheme consists of three colors, the original color and two neighbors of the complement color.



190.9120, -19.7630, 11.2530



190.4640, 30.6280, -4.4120



182.5350, -47.2230, -8.7190

Square

The Square scheme is like the rectangle color scheme, but the four colors are evenly spaced on the color wheel.



190.4640, 30.6280, -4.4120



183.1180, -24.4800, -18.9120



186.5350, -38.0550, 1.3450



194.2130, 22.0500, 18.8980

Rectangle

The Rectangle color scheme consists of four colors that form a rectangle on the color wheel.



190.4640, 30.6280, -4.4120



186.1290, 3.3500, -16.6660



186.5350, -38.0550, 1.3450



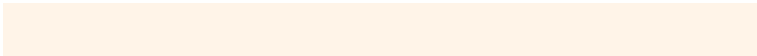
192.9740, -5.1380, 16.0300

Sweetspot

The Sweet Spot groups the original color and five complimentary colors.



190.4640, 30.6280, -4.4120



245.9210, 10.4080, -1.4000



173.0940, 29.9350, 24.6790



122.1810, 6.7400, -1.0040



0.0000, 0.0000, 0.0000



128.0000, -0.0000, -0.0000

Same Dimension

The Same Dimension uses a secret algorithm to generate beautiful new colors.



190.4640, 30.6280, -4.4120



216.9400, 43.7870, -6.1090



208.9490, 21.2320, -21.3600



105.2240, 5.1810, -0.2830



105.7310, 77.8080, -11.4400



27.8420, 20.8160, -2.8000

Inverse Universe

The Inverse Universe completely reimagines the original color for something new.



175.5360, -30.6280, 4.4120



196.0600, -43.7870, 6.1090



157.0510, -21.2320, 21.3600



103.1890, -4.9060, 0.8060



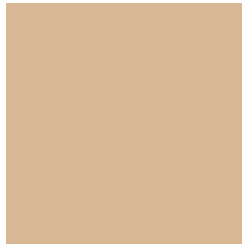
67.8560, -78.0830, 10.9170



18.1580, -20.8160, 2.8000

Previews

White Background



This preview shows how the YIQ color 190.4640, 30.6280, -4.4120 looks on a white background.

Color Contrast Check

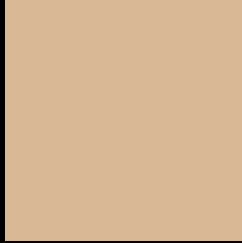
Large Text (above 18pt) WCAG AA × Fail

Any Text WCAG AA × Fail

Large Text (above 18pt) WCAG AAA × Fail

Any Text WCAG AAA × Fail

Black Background



This preview shows how the YIQ color 190.4640, 30.6280, -4.4120 looks on a black background.

Color Contrast Check

Large Text (above 18pt) WCAG AA ✓ Pass

Any Text WCAG AA ✓ Pass

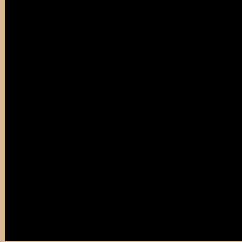
Large Text (above 18pt) WCAG AAA ✓ Pass

Any Text WCAG AAA ✓ Pass

If you want to check with other color combinations, try the [Color Contrast Checker](#).

YIQ 190.4640, 30.6280, -4.4120

Background



This preview shows how black text looks on a background with the YIQ color 190.4640, 30.6280, -4.4120.



This preview shows how white text looks on a background with the YIQ color 190.4640, 30.6280, -4.4120.

-4.4120.

Color Blindness Simulation

Color vision deficiency is a very complex topic, and I could not describe the different causes any better than Wikipedia does, so if you want to learn more, you should check out their [article about color blindness](#).

Dichromacy



Original Color

190.4640, 30.6280, -4.4120

Protanopia

189.1420, 19.6710, -9.5850

Deuteranopia

191.0840, 34.7540, -2.0940



Tritanopia

193.4530, 21.1340, 13.4700

Trichromacy



Original Color

190.4640, 30.6280, -4.4120

Protanomaly

189.3490, 23.5220, -7.7900

Deuteranomaly

191.0730, 33.2870, -3.0410

Tritanomaly

192.2050, 24.5280, 7.0240

Monochromacy



Original Color

190.4640, 30.6280, -4.4120

Achromatopsia

190.0000, -0.0000, -0.0000

Achromatomaly

190.1060, 11.3250, -1.4990

CSS Examples

Text

The CSS property to change the color of the text to YIQ 190.4640, 30.6280, -4.4120 is called "color". The color property can be set on classes, ids or directly on the HTML element.

This example shows how text in the color `rgb(217, 185, 149)` looks like.

```
.text, #text, p{  
    color:rgb(217, 185, 149)  
}
```

If you want to add a text shadow in that color use the text-shadow property, you can generate a text shadow directly with our [CSS Text Shadow Generator](#).

Here you see how black text with a 4 pixel rgb(217, 185, 149) colored shadow looks like.

```
.shadow{ text-shadow: 4px 4px 2px rgb(217, 185, 149) }
```

Border

The CSS property to change the border of an element to YIQ 190.4640, 30.6280, -4.4120 is called "border". The border property can be set on classes, ids or directly on the HTML element.

This example shows the color as border, it can be applied via the CSS property "border" or "border-color".

```
.border, #border, table{ border:4px solid rgb(217, 185, 149) }
```


If only the border color should be changed use the property `border-color`.

```
.border{ border-color:rgb(217, 185, 149) }
```

If you want to add a box shadow in that color use:

Here you see how a box with a 4 pixel `rgb(217, 185, 149)` colored shadow looks like.

```
.boxshadow{ -moz-box-shadow:4px 4px 4px  
4px rgb(217, 185, 149); -webkit-box-  
shadow:4px 4px 4px 4px rgb(217, 185, 149);  
box-shadow:4px 4px 4px 4px rgb(217, 185,  
149) }
```

Background

The CSS property to change the background color of an element to YIQ 190.4640, 30.6280, -4.4120 is called "background". The background property can be set on classes, ids or directly on the HTML element.

```
.background, #background, body{  
background: rgb(217, 185, 149) }
```

If only the background color should be changed can be used:

```
.background{ background-color: rgb(217,  
185, 149) }
```

This example shows the color as background, it is applied via the CSS property "background".

To optimize and compress your CSS code, you can use our [online CSS compressor and optimizer](#) based on csstidy. If you want to create a linear or radial gradient as background or border, check our [CSS Gradient Generator](#).

Hey! You found this booklet interesting? Support Converting Colors with the new Membership Option!

The pro membership hides all ads, plus gives you double the colors in the color bucket, and more awesome pro features!

[Learn more, Memberships starting at \\$2.50/m!](#)

**Follow me
on Twitter!**

@ConvertingColor