

Converting Colors

YIQ(191.1650, 12.8370, 4.1410)

Have a look what the booklet for
YIQ(191.1650, 12.8370, 4.1410)
contains.

YIQ(191.1650, 12.8370, 4.1410)	3
<i>Conversions</i>	4
<i>Details</i>	6
<i>Harmonies</i>	12
<i>Previews</i>	24
<i>Color Blindness Simulation</i>	28
<i>CSS Examples</i>	31

Color

**YIQ(191.1650, 12.8370,
4.1410)**

Conversions

Conversions Part 1

Format	Color
Hex	CEB9B8
RGB	206, 185, 184
RGB Percent	81%, 73%, 72%
CMY	0.1921, 0.2745, 0.2784
CMYK	0.00, 0.10, 0.11, 0.19
HSL	3°, 18%, 76%
HSV	3°, 11%, 81%
XYZ	51.4573, 51.2791, 52.5404
YIQ	191.1650, 12.8370, 4.1410

Conversions

Conversions Part 2

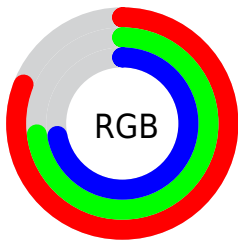
Format	Color
R _Y B	206, 185, 184
Decimal	13547960
CIE Lab	76.85, 7.31, 3.21
CIE LCh	77, 7.980, 23.733
Yxy	51.2791, 0.3314, 0.3302
Android (android.graphics.Color)	4291738040 (0xFFCEB9B8)
YUV	191.1650, -3.5323, 13.0103
Hunter-Lab	71.6094, 2.9506, 6.6250

Details

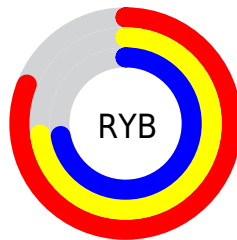
The YIQ color $191.1650, 12.8370, 4.1410$ is a light color, and the websafe version is hex `CCCCCC`. A complement of this color would be $198.8350, -12.8370, -4.1410$, and the grayscale version is $191.0000, -0.0000, -0.0000$.

A 20% lighter version of the original color is $245.0720, 8.6650, 2.6570$, and $137.8660, 12.2410, 3.9290$ is the 20% darker color. If you saturate the color by 10%, you get $177.0310, 25.0780, 8.0700$, and if you desaturate by 10%, it is $205.2990, 0.5960, 0.2120$.

Distribution



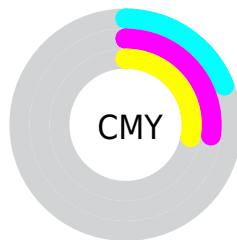
- Red (81%)
- Green (73%)
- Blue (72%)



- Red (81%)
- Yellow (73%)
- Blue (72%)



- Cyan (0%)
- Magenta (10%)
- Yellow (11%)
- Black (19%)



- Cyan (19%)
- Magenta (27%)
- Yellow (28%)

Brightness & Saturation Gradients

These gradients show how the YIQ color 191.1650, 12.8370, 4.1410 changes by changing the brightness by 10 percent. The first figure shows a shift by +10% for each color and the second figure -10%.

Similar to the brightness gradients but the following saturation gradients show a change of the YIQ color 191.1650, 12.8370, 4.1410 by changing the saturation by 10% instead.

■ 191.1650, 12.8370,
4.1410

■ 191.1650, 12.8370,
4.1410

255.0000, -0.0000,
-0.0000

■ 163.8660, 12.2410,
3.9290

■ 245.0720, 8.6650,
2.6570

■ 137.8660, 12.2410,
3.9290

■ 112.5670, 11.6450,
3.7170

■ 87.9690, 10.4530,
3.2930

■ 64.0830, 10.1320,
3.6040

■ 42.3710, 9.2610,
2.8690

■ 21.3710, 9.2610,

2.8690

■ 0.0000, 0.0000,
0.0000

■ 191.1650, 12.8370,
4.1410

■ 191.1650, 12.8370,
4.1410

■ 177.0310, 25.0780,
8.0700

■ 205.2990, 0.5960,
0.2120

■ 163.5980, 36.7230,
11.7870

■ 218.7320,
-11.0490, -3.5050

■ 149.4640, 48.9640,
15.7160

■ 232.8660,
-23.2900, -7.4340

■ 135.4440, 60.8840,
19.9560

■ 240.3490,
-29.2040, -10.3880

■ 121.8970, 72.8500,
23.3620

■ 107.7630, 85.0910,
27.2910

■ 93.7430, 97.0110,
31.5310

■ 80.1960, 108.9770,
34.9370

■ 66.8770, 120.3010,
38.9650

Harmonies

Analogous

The Analogous color harmony consists of three colors that are next to each other on the color wheel.



191.3650, 9.3980, 5.8940



191.1650, 12.8370, 4.1410



190.4700, 13.2960, 1.3280

Triad

The Triadic color harmony groups three colors that are evenly spaced from another and form a triangle on the color wheel.



191.1650, 12.8370, 4.1410



188.0440, -3.3000, -6.2760



189.1930, -10.7290, 1.7110

Complementary

The Complementary color scheme is a pair of colors which are on the opposite of each other on the color wheel.



191.1650, 12.8370, 4.1410



198.8350, -12.8370, -4.1410

Split Complementary

Split-complementary colors differ from the complementary color scheme. The scheme consists of three colors, the original color and two neighbors of the complement color.



188.2310, -13.8920, -1.5400



191.1650, 12.8370, 4.1410



187.3360, -9.9940, -6.1060

Square

The Square scheme is like the rectangle color scheme, but the four colors are evenly spaced on the color wheel.



191.1650, 12.8370, 4.1410



188.6920, 3.6230, -5.0890



187.5360, -13.4330, -4.3530



190.0090, -4.2190, 4.8770

Rectangle

The Rectangle color scheme consists of four colors that form a rectangle on the color wheel.



191.1650, 12.8370, 4.1410



190.2200, 11.0040, -1.1880



187.5360, -13.4330, -4.3530



189.1820, -12.1960, 0.7640

Sweetspot

The Sweet Spot groups the original color and five complimentary colors.



191.1650, 12.8370, 4.1410



249.9790, 4.4930, 1.1730



192.9720, 6.3710, 11.1950



124.3810, 3.3010, 0.7490



0.0000, 0.0000, 0.0000



128.0000, -0.0000, -0.0000

Same Dimension

The Same Dimension uses a secret algorithm to generate beautiful new colors.



191.1650, 12.8370, 4.1410



232.4540, 19.3930, 6.4730



197.6220, 9.8120, -1.6120



94.9900, 5.9600, 2.1200



53.7430, 97.0110, 31.5310



12.5360, 22.0980, 7.0100

Inverse Universe

The Inverse Universe completely reimagines the original color for something new.



198.8350, -12.8370, -4.1410



244.5460, -19.3930, -6.4730



192.3780, -9.8120, 1.6120



99.0100, -5.9600, -2.1200



111.6700, -96.7360, -31.0080



26.0510, -22.3730, -7.5330

Previews

White Background



This preview shows how the YIQ color 191.1650, 12.8370, 4.1410 looks on a white background.

Color Contrast Check

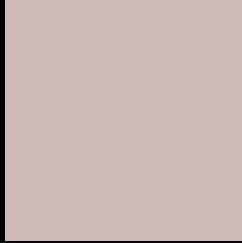
Large Text (above 18pt) WCAG AA × Fail

Any Text WCAG AA × Fail

Large Text (above 18pt) WCAG AAA × Fail

Any Text WCAG AAA × Fail

Black Background



This preview shows how the YIQ color 191.1650, 12.8370, 4.1410 looks on a black background.

Color Contrast Check

Large Text (above 18pt) WCAG AA ✓ Pass

Any Text WCAG AA ✓ Pass

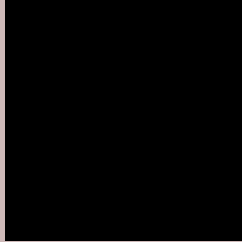
Large Text (above 18pt) WCAG AAA ✓ Pass

Any Text WCAG AAA ✓ Pass

If you want to check with other color combinations, try the [Color Contrast Checker](#).

YIQ 191.1650, 12.8370, 4.1410

Background



This preview shows how black text looks on a background with the YIQ color 191.1650, 12.8370, 4.1410.



This preview shows how white text looks on a background with the YIQ color 191.1650, 12.8370,

4.1410.

Color Blindness Simulation

Color vision deficiency is a very complex topic, and I could not describe the different causes any better than Wikipedia does, so if you want to learn more, you should check out their [article about color blindness](#).

Dichromacy



Original Color

191.1650, 12.8370, 4.1410

Protanopia

190.1530, 3.9430, 0.1270

Deuteranopia

191.1870, 15.7710, 6.0350



Tritanopia

192.0710, 10.4060, 9.6540

Trichromacy



Original Color

191.1650, 12.8370, 4.1410

Protanomaly

190.6480, 6.9230, 1.1870

Deuteranomaly

191.4750, 14.9000, 5.3000

Tritanomaly

191.7890, 11.1400, 7.3640

Monochromacy



Original Color

191.1650, 12.8370, 4.1410

Achromatopsia

191.0000, -0.0000, -0.0000

Achromatomaly

190.9790, 4.4930, 1.1730

CSS Examples

Text

The CSS property to change the color of the text to YIQ 191.1650, 12.8370, 4.1410 is called "color". The color property can be set on classes, ids or directly on the HTML element.

This example shows how text in the color `rgb(206, 185, 184)` looks like.

```
.text, #text, p{  
    color:rgb(206, 185, 184)  
}
```

If you want to add a text shadow in that color use the text-shadow property, you can generate a text shadow directly with our [CSS Text Shadow Generator](#).

Here you see how black text with a 4 pixel rgb(206, 185, 184) colored shadow looks like.

```
.shadow{ text-shadow: 4px 4px 2px rgb(206, 185, 184) }
```

Border

The CSS property to change the border of an element to YIQ 191.1650, 12.8370, 4.1410 is called "border". The border property can be set on classes, ids or directly on the HTML element.

This example shows the color as border, it can be applied via the CSS property "border" or "border-color".

```
.border, #border, table{ border:4px solid rgb(206, 185, 184) }
```


If only the border color should be changed use the property `border-color`.

```
.border{ border-color:rgb(206, 185, 184) }
```

If you want to add a box shadow in that color use:

Here you see how a box with a 4 pixel `rgb(206, 185, 184)` colored shadow looks like.

```
.boxshadow{ -moz-box-shadow:4px 4px 4px  
4px rgb(206, 185, 184); -webkit-box-  
shadow:4px 4px 4px 4px rgb(206, 185, 184);  
box-shadow:4px 4px 4px 4px rgb(206, 185,  
184) }
```

Background

The CSS property to change the background color of an element to YIQ 191.1650, 12.8370, 4.1410 is called "background". The background property can be set on classes, ids or directly on the HTML element.

```
.background, #background, body{  
background: rgb(206, 185, 184) }
```

If only the background color should be changed can be used:

```
.background{ background-color: rgb(206,  
185, 184) }
```

This example shows the color as background, it is applied via the CSS property "background".

To optimize and compress your CSS code, you can use our [online CSS compressor and optimizer](#) based on csstidy. If you want to create a linear or radial gradient as background or border, check our [CSS Gradient Generator](#).

Hey! You found this booklet interesting? Support Converting Colors with the new Membership Option!

The pro membership hides all ads, plus gives you double the colors in the color bucket, and more awesome pro features!

[Learn more, Memberships starting at \\$2.50/m!](#)

**Follow me
on Twitter!**

@ConvertingColor