

Converting Colors

YIQ(191.3010, 15.4500, 6.3460)

Have a look what the booklet for
YIQ(191.3010, 15.4500, 6.3460)
contains.

YIQ(191.3010, 15.4500, 6.3460)	3
<i>Conversions</i>	4
<i>Details</i>	6
<i>Harmonies</i>	12
<i>Previews</i>	24
<i>Color Blindness Simulation</i>	28
<i>CSS Examples</i>	31

Color

**YIQ(191.3010, 15.4500,
6.3460)**

Conversions

Conversions Part 1

Format	Color
Hex	D2B7B9
RGB	210, 183, 185
RGB Percent	82%, 72%, 73%
CMY	0.1764, 0.2824, 0.2744
CMYK	0.00, 0.13, 0.12, 0.18
HSL	356°, 23%, 77%
HSV	356°, 13%, 82%
XYZ	52.2728, 51.0698, 53.0098
YIQ	191.3010, 15.4500, 6.3460

Conversions

Conversions Part 2

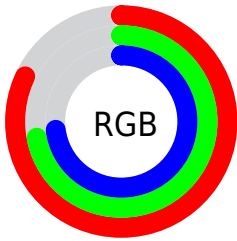
Format	Color
R _Y B	210, 183, 185
Decimal	13809593
CIE Lab	76.72, 9.99, 2.53
CIE LCh	77, 10.307, 14.199
Yxy	51.0698, 0.3343, 0.3266
Android (android.graphics.Color)	4291999673 (0xFFD2B7B9)
YUV	191.3010, -3.1064, 16.3990
Hunter-Lab	71.4631, 5.5061, 6.0442

Details

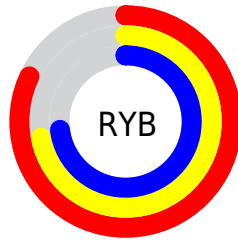
The YIQ color $191.3010, 15.4500, 6.3460$ is a light color, and the websafe version is hex `CCCCCC`. A complement of this color would be $201.6990, -15.4500, -6.3460$, and the grayscale version is $191.0000, -0.0000, -0.0000$.

A 20% lighter version of the original color is $244.0120, 8.8940, 4.0140$, and $137.7030, 14.2580, 5.9220$ is the 20% darker color. If you saturate the color by 10%, you get $176.8080, 27.3240, 11.4200$, and if you desaturate by 10%, it is $205.7940, 3.5760, 1.2720$.

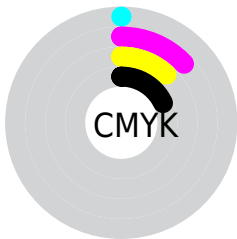
Distribution



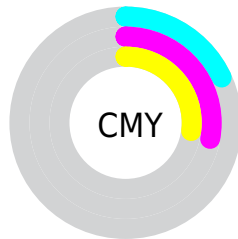
- Red (82%)
- Green (72%)
- Blue (73%)



- Red (82%)
- Yellow (72%)
- Blue (73%)



- Cyan (0%)
- Magenta (13%)
- Yellow (12%)
- Black (18%)





- Cyan (18%)
- Magenta (28%)
- Yellow (27%)

Brightness & Saturation Gradients


These gradients show how the YIQ color 191.3010, 15.4500, 6.3460 changes by changing the brightness by 10 percent. The first figure shows a shift by +10% for each color and the second figure -10%.


Similar to the brightness gradients but the following saturation gradients show a change of the YIQ color 191.3010, 15.4500, 6.3460 by changing the saturation by 10% instead.


 191.3010, 15.4500,
6.3460


 191.3010, 15.4500,
6.3460


255.0000, -0.0000,
-0.0000


 164.0020, 14.8540,
6.1340


 244.0120, 8.8940,
4.0140

 137.7030, 14.2580,
5.9220

 112.4040, 13.6620,
5.7100

 88.1050, 13.0660,
5.4980

 64.5070, 11.8740,
5.0740

 42.2080, 11.2780,
4.8620

 20.9090, 10.6820,

4.6500

■ 0.0000, 0.0000,
0.0000

■ 191.3010, 15.4500,
6.3460

■ 191.3010, 15.4500,
6.3460

■ 176.8080, 27.3240,
11.4200

■ 205.7940, 3.5760,
1.2720

■ 162.2010, 39.5190,
16.1830

■ 220.4010, -8.6190,
-3.4910

■ 147.7080, 51.3930,
21.2570

■ 234.8940,
-20.4930, -8.5650

■ 133.1010, 63.5880,
26.0200

■ 241.5450,
-26.8200, -9.5400

■ 118.6080, 75.4620,
31.0940

■ 104.0010, 87.6570,
35.8570

■ 89.5080, 99.5310,
40.9310

■ 75.0150, 111.4050,
46.0050

■ 64.6140, 120.0240,
49.4960

Harmonies

Analogous

The Analogous color harmony consists of three colors that are next to each other on the color wheel.



191.2450, 9.8560, 8.6080



191.3010, 15.4500, 6.3460



190.5630, 17.4680, 2.8120

Triad

The Triadic color harmony groups three colors that are evenly spaced from another and form a triangle on the color wheel.



191.3010, 15.4500, 6.3460



187.3600, -1.3740, -8.1420



188.3280, -15.5430, 0.8490

Complementary

The Complementary color scheme is a pair of colors which are on the opposite of each other on the color wheel.



191.3010, 15.4500, 6.3460



201.6990, -15.4500, -6.3460

Split Complementary

Split-complementary colors differ from the complementary color scheme. The scheme consists of three colors, the original color and two neighbors of the complement color.



186.8390, -18.6600, -3.2360



191.3010, 15.4500, 6.3460



186.8690, -10.1770, -8.2970

Square

The Square scheme is like the rectangle color scheme, but the four colors are evenly spaced on the color wheel.



191.3010, 15.4500, 6.3460



188.4320, 7.2910, -5.4850



186.2150, -16.9630, -6.4590



189.9700, -8.4830, 5.0610

Rectangle

The Rectangle color scheme consists of four colors that form a rectangle on the color wheel.



191.3010, 15.4500, 6.3460



190.0850, 15.8180, -0.3260



186.2150, -16.9630, -6.4590



187.9040, -17.2850, -0.6210

Sweetspot

The Sweet Spot groups the original color and five complimentary colors.



191.3010, 15.4500, 6.3460



248.1040, 5.6390, 2.4310



193.5530, 6.2330, 13.6970



123.2070, 3.8510, 1.7950



0.0000, 0.0000, 0.0000



128.0000, -0.0000, -0.0000

Same Dimension

The Same Dimension uses a secret algorithm to generate beautiful new colors.



191.3010, 15.4500, 6.3460



228.7040, 21.6850, 8.9890



197.5300, 13.0670, -0.0290



97.4030, 6.2350, 2.6430



51.7140, 95.9550, 39.6590



12.6010, 23.4730, 9.6250

Inverse Universe

The Inverse Universe completely reimagines the original color for something new.



191.3010, 15.4500, 6.3460



228.7040, 21.6850, 8.9890



195.4700, -13.0670, 0.0290



97.4030, 6.2350, 2.6430



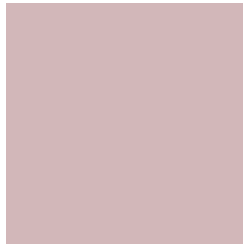
51.7140, 95.9550, 39.6590



12.6010, 23.4730, 9.6250

Previews

White Background



This preview shows how the YIQ color 191.3010, 15.4500, 6.3460 looks on a white background.

Color Contrast Check

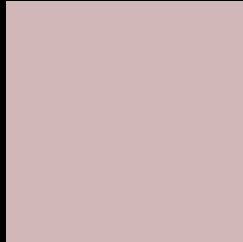
Large Text (above 18pt) WCAG AA × Fail

Any Text WCAG AA × Fail

Large Text (above 18pt) WCAG AAA × Fail

Any Text WCAG AAA × Fail

Black Background



This preview shows how the YIQ color 191.3010, 15.4500, 6.3460 looks on a black background.

Color Contrast Check

Large Text (above 18pt) WCAG AA ✓ Pass

Any Text WCAG AA ✓ Pass

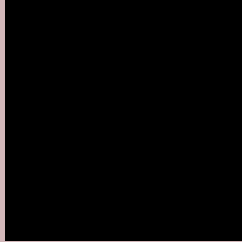
Large Text (above 18pt) WCAG AAA ✓ Pass

Any Text WCAG AAA ✓ Pass

If you want to check with other color combinations, try the [Color Contrast Checker](#).

YIQ 191.3010, 15.4500, 6.3460

Background



This preview shows how black text looks on a background with the YIQ color 191.3010, 15.4500, 6.3460.



This preview shows how white text looks on a background with the YIQ color 191.3010, 15.4500,

6.3460.

Color Blindness Simulation

Color vision deficiency is a very complex topic, and I could not describe the different causes any better than Wikipedia does, so if you want to learn more, you should check out their [article about color blindness](#).

Dichromacy



Original Color

191.3010, 15.4500, 6.3460

Protanopia

190.0820, 2.7050, 0.5370

Deuteranopia

191.0020, 14.8540, 6.1340



Tritanopia

191.6800, 13.0650, 11.0250

Trichromacy



Original Color

191.3010, 15.4500, 6.3460

Protanomaly

190.5880, 7.1520, 2.5440

Deuteranomaly

191.0020, 14.8540, 6.1340

Tritanomaly

191.8110, 14.0740, 9.2580

Monochromacy



Original Color

191.3010, 15.4500, 6.3460

Achromatopsia

191.0000, -0.0000, -0.0000

Achromatomaly

191.1040, 5.6390, 2.4310

CSS Examples

Text

The CSS property to change the color of the text to YIQ 191.3010, 15.4500, 6.3460 is called "color". The color property can be set on classes, ids or directly on the HTML element.

This example shows how text in the color `rgb(210, 183, 185)` looks like.

```
.text, #text, p{  
    color:rgb(210, 183, 185)  
}
```

If you want to add a text shadow in that color use the text-shadow property, you can generate a text shadow directly with our [CSS Text Shadow Generator](#).

Here you see how black text with a 4 pixel rgb(210, 183, 185) colored shadow looks like.

```
.shadow{ text-shadow: 4px 4px 2px rgb(210, 183, 185) }
```

Border

The CSS property to change the border of an element to YIQ 191.3010, 15.4500, 6.3460 is called "border". The border property can be set on classes, ids or directly on the HTML element.

This example shows the color as border, it can be applied via the CSS property "border" or "border-color".

```
.border, #border, table{ border:4px solid rgb(210, 183, 185) }
```


If only the border color should be changed use the property `border-color`.

```
.border{ border-color:rgb(210, 183, 185) }
```

If you want to add a box shadow in that color use:

Here you see how a box with a 4 pixel `rgb(210, 183, 185)` colored shadow looks like.

```
.boxshadow{ -moz-box-shadow:4px 4px 4px  
4px rgb(210, 183, 185); -webkit-box-  
shadow:4px 4px 4px 4px rgb(210, 183, 185);  
box-shadow:4px 4px 4px 4px rgb(210, 183,  
185) }
```

Background

The CSS property to change the background color of an element to YIQ 191.3010, 15.4500, 6.3460 is called "background". The background property can be set on classes, ids or directly on the HTML element.

```
.background, #background, body{  
background: rgb(210, 183, 185) }
```

If only the background color should be changed can be used:

```
.background{ background-color: rgb(210,  
183, 185) }
```

This example shows the color as background, it is applied via the CSS property "background".

To optimize and compress your CSS code, you can use our [online CSS compressor and optimizer](#) based on csstidy. If you want to create a linear or radial gradient as background or border, check our [CSS Gradient Generator](#).

Hey! You found this booklet interesting? Support Converting Colors with the new Membership Option!

The pro membership hides all ads, plus gives you double the colors in the color bucket, and more awesome pro features!

[Learn more, Memberships starting at \\$2.50/m!](#)

**Follow me
on Twitter!**

@ConvertingColor