

# Converting Colors

YIQ(191.3330, 29.6190, -2.6450)

Have a look what the booklet for  
YIQ(191.3330, 29.6190, -2.6450)  
contains.

<b>YIQ(191.3330, 29.6190, -2.6450)</b> .....	3
<b><i>Conversions</i></b> .....	4
<b><i>Details</i></b> .....	6
<b><i>Harmonies</i></b> .....	12
<b><i>Previews</i></b> .....	24
<b><i>Color Blindness Simulation</i></b> .....	28
<b><i>CSS Examples</i></b> .....	31

# Color

**YIQ(191.3330, 29.6190,  
-2.6450)**

# Conversions

## Conversions Part 1

<b>Format</b>	<b>Color</b>
Hex	DAB99A
RGB	218, 185, 154
RGB Percent	85%, 73%, 60%
CMY	0.1450, 0.2745, 0.3959
CMYK	0.00, 0.15, 0.29, 0.15
HSL	29°, 46%, 73%
HSV	29°, 29%, 85%
XYZ	52.0997, 51.9341, 37.8660
YIQ	191.3330, 29.6190, -2.6450

# Conversions

## Conversions Part 2

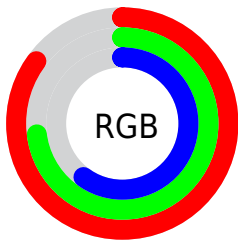
Format	Color
RYB	218, 214, 154
Decimal	14334362
CIELab	77.24, 7.30, 20.12
CIElCh	77, 21.398, 70.061
Yxy	51.9341, 0.3672, 0.3660
Android (android.graphics.Color)	4292524442 (0xFFDAB99A)
YUV	191.3330, -18.4052, 23.3870
Hunter-Lab	72.0653, 2.9325, 19.2925

# Details

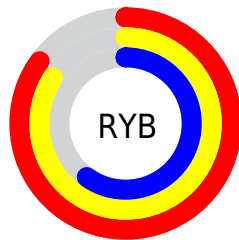
The YIQ color  $191.3330, 29.6190, -2.6450$  is a light color, and the websafe version is hex  $\text{FFCC99}$ . A complement of this color would be  $180.6670, -29.6190, 2.6450$ , and the grayscale version is  $191.0000, -0.0000, -0.0000$ .

A 20% lighter version of the original color is  $241.4240, 18.9370, -7.2950$ , and  $137.6640, 27.1890, -2.6590$  is the 20% darker color. If you saturate the color by 10%, you get  $182.3680, 39.7060, -3.7340$ , and if you desaturate by 10%, it is  $200.2980, 19.5320, -1.5560$ .

# Distribution



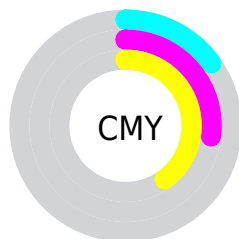
- Red (85%)
- Green (73%)
- Blue (60%)



- Red (85%)
- Yellow (84%)
- Blue (60%)



- Cyan (0%)
- Magenta (15%)
- Yellow (29%)
- Black (15%)



- Cyan (15%)
- Magenta (27%)
- Yellow (40%)

# Brightness & Saturation Gradients

These gradients show how the YIQ color 191.3330, 29.6190, -2.6450 changes by changing the brightness by 10 percent. The first figure shows a shift by +10% for each color and the second figure -10%.

Similar to the brightness gradients but the following saturation gradients show a change of the YIQ color 191.3330, 29.6190, -2.6450 by changing the saturation by 10% instead.



■ 191.3330, 29.6190,  
-2.6450

■ 191.3330, 29.6190,  
-2.6450

■ 255.0000, -0.0000,  
-0.0000

■ 164.1480, 28.7020,  
-2.5460

■ 241.5380, 18.6160,  
-6.9840

■ 137.6640, 27.1890,  
-2.6590

■ 252.9480, 5.7780,  
-5.5980

■ 112.1800, 25.6760,  
-2.7720

■ 87.6960, 24.1630,  
-2.8850

■ 64.2120, 22.6500,  
-2.9980

■ 41.6140, 21.4580,  
-3.4220

■ 21.6290, 17.1020,

-1.5700

0.0000, 0.0000,  
0.0000

191.3330, 29.6190,  
-2.6450

191.3330, 29.6190,  
-2.6450

182.3680, 39.7060,  
-3.7340

200.2980, 19.5320,  
-1.5560

172.8160, 50.0680,  
-4.3000

209.2630, 9.4450,  
-0.4670

163.9650, 59.8340,  
-5.0780

218.7010, -0.5960,  
-0.2120

155.0000, 69.9210,  
-6.1670

227.6660,  
-10.6830, 0.8770

146.0350, 80.0080,  
-7.2560

235.7190,  
-18.2020, -0.5220

■ 136.4830, 90.3700,  
-7.8220

■ 242.7630,  
-21.5020, -6.7980

■ 127.5180,  
100.4570, -8.9110

■ 243.9370,  
-22.0520, -7.8440

■ 126.8170,  
101.0530, -8.6990

# Harmonies

## Analogous

The Analogous color harmony consists of three colors that are next to each other on the color wheel.



192.7670, 34.5690, 6.7690



191.3330, 29.6190, -2.6450



189.5330, 17.0120, -10.9560

# Triad

The Triadic color harmony groups three colors that are evenly spaced from another and form a triangle on the color wheel.



191.3330, 29.6190, -2.6450



182.8920, -35.3470, -14.6990



193.8990, -0.5530, 15.5350

# Complementary

The Complementary color scheme is a pair of colors which are on the opposite of each other on the color wheel.



191.3330, 29.6190, -2.6450



180.6670, -29.6190, 2.6450

# Split Complementary

Split-complementary colors differ from the complementary color scheme. The scheme consists of three colors, the original color and two neighbors of the complement color.



190.5590, -20.2670, 9.3730



191.3330, 29.6190, -2.6450



183.8730, -42.3630, -8.6910

# Square

The Square scheme is like the rectangle color scheme, but the four colors are evenly spaced on the color wheel.



191.3330, 29.6190, -2.6450



184.5100, -19.7120, -17.2160



186.3780, -36.1750, 0.3130



194.2340, 17.5570, 17.7250



# Rectangle

The Rectangle color scheme consists of four colors that form a rectangle on the color wheel.



191.3330, 29.6190, -2.6450



187.8520, 5.6880, -14.9840



186.3780, -36.1750, 0.3130



192.8380, -7.7510, 13.8250

# Sweetspot

The Sweet Spot groups the original color and five complimentary colors.



191.3330, 29.6190, -2.6450



245.3340, 10.6830, -0.8770



176.8980, 27.5510, 23.8310



121.5940, 7.0150, -0.4810



0.0000, 0.0000, 0.0000



128.0000, -0.0000, -0.0000



# Same Dimension

The Same Dimension uses a secret algorithm to generate beautiful new colors.



191.3330, 29.6190, -2.6450



217.8520, 41.2190, -3.6210



210.1170, 20.8190, -19.3810



105.2240, 5.1810, -0.2830



101.0350, 80.0080, -7.2560



26.6680, 21.3660, -1.7540



# Inverse Universe

The Inverse Universe completely reimagines the original color for something new.



180.6670, -29.6190, 2.6450



203.1480, -41.2190, 3.6210



161.8830, -20.8190, 19.3810



103.1890, -4.9060, 0.8060



72.5520, -80.2830, 6.7330



19.3320, -21.3660, 1.7540



# Previews

## White Background



This preview shows how the YIQ color 191.3330, 29.6190, -2.6450 looks on a white background.

## Color Contrast Check

Large Text (above 18pt) WCAG AA × Fail

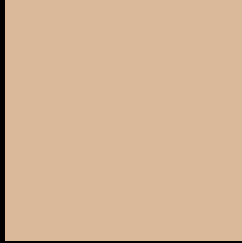
Any Text WCAG AA × Fail

Large Text (above 18pt) WCAG AAA × Fail

Any Text WCAG AAA × Fail



# Black Background



This preview shows how the YIQ color 191.3330, 29.6190, -2.6450 looks on a black background.

## Color Contrast Check

Large Text (above 18pt) WCAG AA ✓ Pass

Any Text WCAG AA ✓ Pass

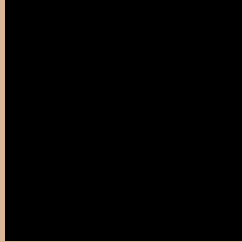
Large Text (above 18pt) WCAG AAA ✓ Pass

Any Text WCAG AAA ✓ Pass

If you want to check with other color combinations, try the [Color Contrast Checker](#).

# YIQ 191.3330, 29.6190, -2.6450

## Background



This preview shows how black text looks on a background with the YIQ color 191.3330, 29.6190, -2.6450.



This preview shows how white text looks on a background with the YIQ color 191.3330, 29.6190,

-2.6450.

# Color Blindness Simulation

Color vision deficiency is a very complex topic, and I could not describe the different causes any better than Wikipedia does, so if you want to learn more, you should check out their [article about color blindness](#).

## Dichromacy



### Original Color

191.3330, 29.6190, -2.6450

### Protanopia

190.4130, 17.4700, -8.2420

### Deuteranopia

191.3550, 32.5530, -0.7510



## Tritanopia

193.4530, 21.1340, 13.4700

# Trichromacy



## Original Color

191.3330, 29.6190, -2.6450

## Protanomaly

190.9190, 21.9170, -6.2350

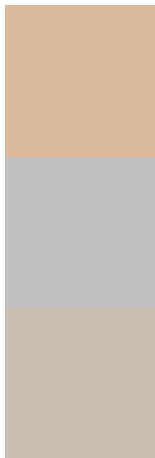
## Deuteranomaly

191.6430, 31.6820, -1.4860

## Tritanomaly

192.7320, 24.4820, 7.8580

# Monochromacy



## Original Color

191.3330, 29.6190, -2.6450

## Achromatopsia

191.0000, -0.0000, -0.0000

## Achromatomaly

191.3340, 10.6830, -0.8770

# CSS Examples

## Text

The CSS property to change the color of the text to YIQ 191.3330, 29.6190, -2.6450 is called "color". The color property can be set on classes, ids or directly on the HTML element.

This example shows how text in the color `rgb(218, 185, 154)` looks like.

```
.text, #text, p{  
    color:rgb(218, 185, 154)  
}
```

If you want to add a text shadow in that color use the text-shadow property, you can generate a text shadow directly with our [CSS Text Shadow Generator](#).

Here you see how black text with a 4 pixel rgb(218, 185, 154) colored shadow looks like.

```
.shadow{ text-shadow: 4px 4px 2px rgb(218, 185, 154) }
```

## Border

The CSS property to change the border of an element to YIQ 191.3330, 29.6190, -2.6450 is called "border". The border property can be set on classes, ids or directly on the HTML element.

This example shows the color as border, it can be applied via the CSS property "border" or "border-color".

```
.border, #border, table{ border:4px solid rgb(218, 185, 154) }
```



If only the border color should be changed use the property `border-color`.

```
.border{ border-color:rgb(218, 185, 154) }
```

If you want to add a box shadow in that color use:

Here you see how a box with a 4 pixel `rgb(218, 185, 154)` colored shadow looks like.

```
.boxshadow{ -moz-box-shadow:4px 4px 4px  
4px rgb(218, 185, 154); -webkit-box-  
shadow:4px 4px 4px 4px rgb(218, 185, 154);  
box-shadow:4px 4px 4px 4px rgb(218, 185,  
154) }
```

# Background

The CSS property to change the background color of an element to YIQ 191.3330, 29.6190, -2.6450 is called "background". The background property can be set on classes, ids or directly on the HTML element.

```
.background, #background, body{  
background: rgb(218, 185, 154) }
```

If only the background color should be changed can be used:

```
.background{ background-color: rgb(218,  
185, 154) }
```

This example shows the color as background, it is applied via the CSS property "background".

To optimize and compress your CSS code, you can use our [online CSS compressor and optimizer](#) based on csstidy. If you want to create a linear or radial gradient as background or border, check our [CSS Gradient Generator](#).

Hey! You found this booklet interesting? Support Converting Colors with the new Membership Option!

The pro membership hides all ads, plus gives you double the colors in the color bucket, and more awesome pro features!

**[Learn more, Memberships starting at \\$2.50/m!](#)**

**Follow me  
on Twitter!**

@ConvertingColor