

Converting Colors

YIQ(191.4690, 15.0370, 8.3250)

Have a look what the booklet for
YIQ(191.4690, 15.0370, 8.3250)
contains.

YIQ(191.4690, 15.0370, 8.3250)	3
<i>Conversions</i>	4
<i>Details</i>	6
<i>Harmonies</i>	12
<i>Previews</i>	24
<i>Color Blindness Simulation</i>	28
<i>CSS Examples</i>	31

Color

**YIQ(191.4690, 15.0370,
8.3250)**

Conversions

Conversions Part 1

Format	Color
Hex	D3B6BD
RGB	211, 182, 189
RGB Percent	83%, 71%, 74%
CMY	0.1725, 0.2863, 0.2588
CMYK	0.00, 0.14, 0.10, 0.17
HSL	345°, 25%, 77%
HSV	345°, 14%, 83%
XYZ	52.7816, 50.9773, 55.2097
YIQ	191.4690, 15.0370, 8.3250

Conversions

Conversions Part 2

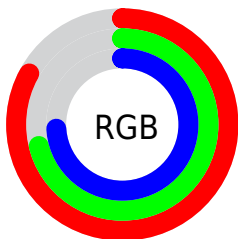
Format	Color
R _Y B	211, 182, 189
Decimal	13874877
CIE Lab	76.67, 11.56, 0.28
CIE LCh	77, 11.562, 1.410
Yxy	50.9773, 0.3320, 0.3207
Android (android.graphics.Color)	4292064957 (0xFFD3B6BD)
YUV	191.4690, -1.2172, 17.1287
Hunter-Lab	71.3984, 7.0098, 4.1321

Details

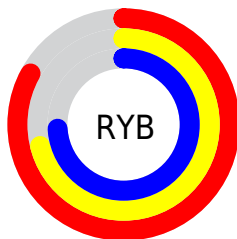
The YIQ color $191.4690, 15.0370, 8.3250$ is a light color, and the websafe version is hex `CCCCCC`. A complement of this color would be $201.5310, -15.0370, -8.3250$, and the grayscale version is $191.0000, -0.0000, -0.0000$.

A 20% lighter version of the original color is $243.8810, 7.8850, 5.7810$, and $137.8710, 13.8450, 7.9010$ is the 20% darker color. If you saturate the color by 10%, you get $177.3180, 25.9480, 14.3320$, and if you desaturate by 10%, it is $205.6200, 4.1260, 2.3180$.

Distribution



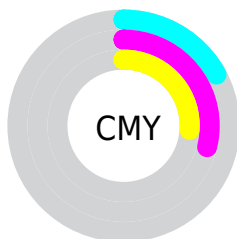
- Red (83%)
- Green (71%)
- Blue (74%)



- Red (83%)
- Yellow (71%)
- Blue (74%)



- Cyan (0%)
- Magenta (14%)
- Yellow (10%)
- Black (17%)



- Cyan (17%)
- Magenta (29%)
- Yellow (26%)

Brightness & Saturation Gradients

These gradients show how the YIQ color 191.4690, 15.0370, 8.3250 changes by changing the brightness by 10 percent. The first figure shows a shift by +10% for each color and the second figure -10%.

Similar to the brightness gradients but the following saturation gradients show a change of the YIQ color 191.4690, 15.0370, 8.3250 by changing the saturation by 10% instead.

■ 191.4690, 15.0370,
8.3250

■ 191.4690, 15.0370,
8.3250

255.0000, -0.0000,
-0.0000

■ 164.1700, 14.4410,
8.1130

■ 243.8810, 7.8850,
5.7810

■ 137.8710, 13.8450,
7.9010

■ 112.4580, 13.5700,
7.3780

■ 88.1590, 12.9740,
7.1660

■ 64.5610, 11.7820,
6.7420

■ 42.2620, 11.1860,
6.5300

■ 21.0770, 10.2690,

6.6290

0.0000, 0.0000,
0.0000

191.4690, 15.0370,
8.3250

191.4690, 15.0370,
8.3250

177.3180, 25.9480,
14.3320

205.6200, 4.1260,
2.3180

163.1670, 36.8590,
20.3390

219.7710, -6.7850,
-3.6890

149.0160, 47.7700,
26.3460

233.9220,
-17.6960, -9.6960

134.8650, 58.6810,
32.3530

241.6160,
-25.5820, -9.9500

120.1270, 69.8670,
38.8830

241.8440,
-26.2240, -9.3280

■ 105.9760, 80.7780,
44.8900

■ 91.8250, 91.6890,
50.8970

■ 77.6740, 102.6000,
56.9040

■ 68.9030, 109.3850,
60.5930

Harmonies

Analogous

The Analogous color harmony consists of three colors that are next to each other on the color wheel.



191.2170, 7.0590, 9.7390



191.4690, 15.0370, 8.3250



191.1010, 18.8890, 4.5930

Triad

The Triadic color harmony groups three colors that are evenly spaced from another and form a triangle on the color wheel.



191.4690, 15.0370, 8.3250



187.5130, 2.5690, -8.0150



187.2350, -19.7150, -0.6350

Complementary

The Complementary color scheme is a pair of colors which are on the opposite of each other on the color wheel.



191.4690, 15.0370, 8.3250



201.5310, -15.0370, -8.3250

Split Complementary

Split-complementary colors differ from the complementary color scheme. The scheme consists of three colors, the original color and two neighbors of the complement color.



185.7030, -21.2730, -5.4410



191.4690, 15.0370, 8.3250



186.3100, -7.1050, -8.9050

Square

The Square scheme is like the rectangle color scheme, but the four colors are evenly spaced on the color wheel.



191.4690, 15.0370, 8.3250



189.2970, 12.1050, -4.6230



185.9330, -16.2290, -8.7490



188.9910, -12.9760, 3.8880

Rectangle

The Rectangle color scheme consists of four colors that form a rectangle on the color wheel.



191.4690, 15.0370, 8.3250



190.2210, 18.4310, 1.8790



185.9330, -16.2290, -8.7490



186.5830, -20.8150, -2.7270

Sweetspot

The Sweet Spot groups the original color and five complimentary colors.



191.4690, 15.0370, 8.3250



248.2180, 5.3180, 2.7420



191.8840, 3.8030, 13.6830



123.3210, 3.5300, 2.1060



0.0000, 0.0000, 0.0000



128.0000, -0.0000, -0.0000

Same Dimension

The Same Dimension uses a secret algorithm to generate beautiful new colors.



191.4690, 15.0370, 8.3250



225.9970, 22.4180, 12.2260



194.7800, 15.3590, 2.4870



97.6310, 5.5930, 3.2650



54.9060, 86.9670, 48.3670



13.3990, 21.2260, 11.8020

Inverse Universe

The Inverse Universe completely reimagines the original color for something new.



191.4690, 15.0370, 8.3250



225.9970, 22.4180, 12.2260



198.2200, -15.3590, -2.4870



97.6310, 5.5930, 3.2650



54.9060, 86.9670, 48.3670



13.3990, 21.2260, 11.8020

Previews

White Background



This preview shows how the YIQ color 191.4690, 15.0370, 8.3250 looks on a white background.

Color Contrast Check

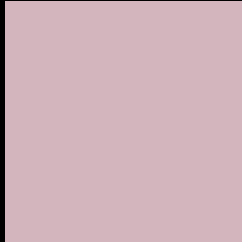
Large Text (above 18pt) WCAG AA × Fail

Any Text WCAG AA × Fail

Large Text (above 18pt) WCAG AAA × Fail

Any Text WCAG AAA × Fail

Black Background



This preview shows how the YIQ color 191.4690, 15.0370, 8.3250 looks on a black background.

Color Contrast Check

Large Text (above 18pt) WCAG AA ✓ Pass

Any Text WCAG AA ✓ Pass

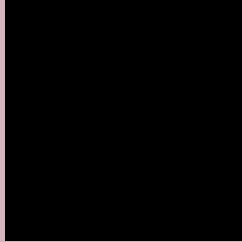
Large Text (above 18pt) WCAG AAA ✓ Pass

Any Text WCAG AAA ✓ Pass

If you want to check with other color combinations, try the [Color Contrast Checker](#).

YIQ 191.4690, 15.0370, 8.3250

Background



This preview shows how black text looks on a background with the YIQ color 191.4690, 15.0370, 8.3250.



This preview shows how white text looks on a background with the YIQ color 191.4690, 15.0370,

8.3250.

Color Blindness Simulation

Color vision deficiency is a very complex topic, and I could not describe the different causes any better than Wikipedia does, so if you want to learn more, you should check out their [article about color blindness](#).

Dichromacy



Original Color

191.4690, 15.0370, 8.3250

Protanopia

189.7660, 0.7790, 2.4030

Deuteranopia

191.1590, 12.9740, 7.1660



Tritanopia

191.8650, 13.9820, 10.9260

Trichromacy



Original Color

191.4690, 15.0370, 8.3250

Protanomaly

190.5710, 5.8220, 4.6220

Deuteranomaly

191.4580, 13.5700, 7.3780

Tritanomaly

191.6370, 14.6240, 10.3040

Monochromacy



Original Color

191.4690, 15.0370, 8.3250

Achromatopsia

191.0000, -0.0000, -0.0000

Achromatomaly

191.2180, 5.3180, 2.7420

CSS Examples

Text

The CSS property to change the color of the text to YIQ 191.4690, 15.0370, 8.3250 is called "color". The color property can be set on classes, ids or directly on the HTML element.

This example shows how text in the color `rgb(211, 182, 189)` looks like.

```
.text, #text, p{  
    color:rgb(211, 182, 189)  
}
```

If you want to add a text shadow in that color use the text-shadow property, you can generate a text shadow directly with our [CSS Text Shadow Generator](#).

Here you see how black text with a 4 pixel rgb(211, 182, 189) colored shadow looks like.

```
.shadow{ text-shadow: 4px 4px 2px rgb(211, 182, 189) }
```

Border

The CSS property to change the border of an element to YIQ 191.4690, 15.0370, 8.3250 is called "border". The border property can be set on classes, ids or directly on the HTML element.

This example shows the color as border, it can be applied via the CSS property "border" or "border-color".

```
.border, #border, table{ border:4px solid rgb(211, 182, 189) }
```


If only the border color should be changed use the property `border-color`.

```
.border{ border-color:rgb(211, 182, 189) }
```

If you want to add a box shadow in that color use:

Here you see how a box with a 4 pixel `rgb(211, 182, 189)` colored shadow looks like.

```
.boxshadow{ -moz-box-shadow:4px 4px 4px 4px rgb(211, 182, 189); -webkit-box-shadow:4px 4px 4px 4px rgb(211, 182, 189); box-shadow:4px 4px 4px 4px rgb(211, 182, 189) }
```

Background

The CSS property to change the background color of an element to YIQ 191.4690, 15.0370, 8.3250 is called "background". The background property can be set on classes, ids or directly on the HTML element.

```
.background, #background, body{  
background: rgb(211, 182, 189) }
```

If only the background color should be changed can be used:

```
.background{ background-color: rgb(211,  
182, 189) }
```

This example shows the color as background, it is applied via the CSS property "background".

To optimize and compress your CSS code, you can use our [online CSS compressor and optimizer](#) based on csstidy. If you want to create a linear or radial gradient as background or border, check our [CSS Gradient Generator](#).

Hey! You found this booklet interesting? Support Converting Colors with the new Membership Option!

The pro membership hides all ads, plus gives you double the colors in the color bucket, and more awesome pro features!

[Learn more, Memberships starting at \\$2.50/m!](#)

**Follow me
on Twitter!**

@ConvertingColor