

Converting Colors

YIQ(191.6860, 12.9280, 8.0000)

Have a look what the booklet for
YIQ(191.6860, 12.9280, 8.0000)
contains.

YIQ(191.6860, 12.9280, 8.0000)	3
<i>Conversions</i>	4
<i>Details</i>	6
<i>Harmonies</i>	12
<i>Previews</i>	24
<i>Color Blindness Simulation</i>	28
<i>CSS Examples</i>	31

Color

**YIQ(191.6860, 12.9280,
8.0000)**

Conversions

Conversions Part 1

Format	Color
Hex	D1B7BF
RGB	209, 183, 191
RGB Percent	82%, 72%, 75%
CMY	0.1803, 0.2824, 0.2509
CMYK	0.00, 0.12, 0.09, 0.18
HSL	342°, 22%, 77%
HSV	342°, 12%, 82%
XYZ	52.6358, 51.1824, 56.4018
YIQ	191.6860, 12.9280, 8.0000

Conversions

Conversions Part 2

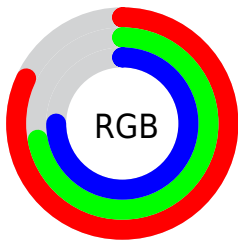
Format	Color
R _Y B	209, 183, 191
Decimal	13744063
CIE Lab	76.79, 10.64, -0.64
CIE LCh	77, 10.664, 356.552
Yxy	51.1824, 0.3285, 0.3195
Android (android.graphics.Color)	4291934143 (0xFFD1B7BF)
YUV	191.6860, -0.3382, 15.1844
Hunter-Lab	71.5419, 6.1303, 3.3365

Details

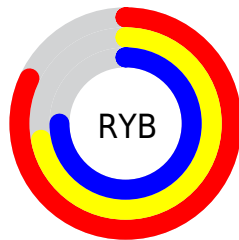
The YIQ color $191.6860, 12.9280, 8.0000$ is a light color, and the websafe version is hex $CCCCCC$. A complement of this color would be $200.3140, -12.9280, -8.0000$, and the grayscale version is $192.0000, -0.0000, 0.0000$.

A 20% lighter version of the original color is $244.6960, 6.9680, 5.8800$, and $138.0880, 11.7360, 7.5760$ is the 20% darker color. If you saturate the color by 10%, you get $177.7630, 23.1970, 14.6290$, and if you desaturate by 10%, it is $205.6090, 2.6590, 1.3710$.

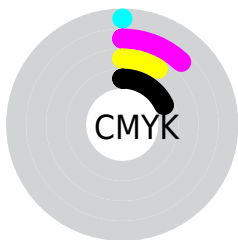
Distribution



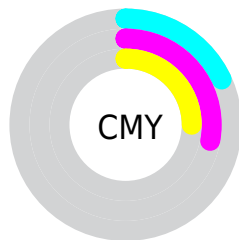
- Red (82%)
- Green (72%)
- Blue (75%)



- Red (82%)
- Yellow (72%)
- Blue (75%)



- Cyan (0%)
- Magenta (12%)
- Yellow (9%)
- Black (18%)



- Cyan (18%)
- Magenta (28%)
- Yellow (25%)

Brightness & Saturation Gradients

These gradients show how the YIQ color 191.6860, 12.9280, 8.0000 changes by changing the brightness by 10 percent. The first figure shows a shift by +10% for each color and the second figure -10%.

Similar to the brightness gradients but the following saturation gradients show a change of the YIQ color 191.6860, 12.9280, 8.0000 by changing the saturation by 10% instead.

■ 191.6860, 12.9280,
8.0000

■ 191.6860, 12.9280,
8.0000

255.0000, -0.0000,
-0.0000

■ 164.3870, 12.3320,
7.7880

■ 244.6960, 6.9680,
5.8800

■ 138.0880, 11.7360,
7.5760

■ 112.6750, 11.4610,
7.0530

■ 88.3760, 10.8650,
6.8410

■ 65.0770, 10.2690,
6.6290

■ 42.7780, 9.6730,
6.4170

■ 21.4790, 9.0770,

6.2050

■ 0.0000, 0.0000,
0.0000

■ 191.6860, 12.9280,
8.0000

■ 191.6860, 12.9280,
8.0000

■ 177.7630, 23.1970,
14.6290

■ 205.6090, 2.6590,
1.3710

■ 163.7260, 33.7870,
20.9470

■ 219.6460, -7.9310,
-4.9470

■ 149.8030, 44.0560,
27.5760

■ 233.5690,
-18.2000, -11.5760

■ 135.7660, 54.6460,
33.8940

■ 240.5620,
-25.4900, -11.6180

■ 121.8430, 64.9150,
40.5230

■ 241.2460,
-27.4160, -9.7520

■ 108.3930, 75.2300,
46.3180

■ 94.4700, 85.4990,
52.9470

■ 80.4330, 96.0890,
59.2650

■ 69.7870, 104.0200,
64.2120

Harmonies

Analogous

The Analogous color harmony consists of three colors that are next to each other on the color wheel.



191.9070, 4.9960, 8.5800



191.6860, 12.9280, 8.0000



191.1440, 17.3300, 5.3140

Triad

The Triadic color harmony groups three colors that are evenly spaced from another and form a triangle on the color wheel.



191.6860, 12.9280, 8.0000



188.5240, 4.0360, -7.0680



187.8930, -18.7520, -1.5680

Complementary

The Complementary color scheme is a pair of colors which are on the opposite of each other on the color wheel.



191.6860, 12.9280, 8.0000



200.3140, -12.9280, -8.0000

Split Complementary

Split-complementary colors differ from the complementary color scheme. The scheme consists of three colors, the original color and two neighbors of the complement color.



186.3720, -18.8430, -5.4270



191.6860, 12.9280, 8.0000



187.0930, -4.9960, -8.5800

Square

The Square scheme is like the rectangle color scheme, but the four colors are evenly spaced on the color wheel.



191.6860, 12.9280, 8.0000



189.2370, 12.3340, -3.2660



186.1290, -13.8450, -7.9010



189.1650, -13.5260, 2.8420

Rectangle

The Rectangle color scheme consists of four colors that form a rectangle on the color wheel.



191.6860, 12.9280, 8.0000



191.1500, 17.1930, 2.2890



186.1290, -13.8450, -7.9010



186.9530, -18.9810, -2.9250

Sweetspot

The Sweet Spot groups the original color and five complimentary colors.



191.6860, 12.9280, 8.0000



248.3320, 4.9970, 3.0530



191.3460, 2.3820, 11.9020



123.3210, 3.5300, 2.1060



0.0000, 0.0000, 0.0000



128.0000, -0.0000, -0.0000

Same Dimension

The Same Dimension uses a secret algorithm to generate beautiful new colors.



191.6860, 12.9280, 8.0000



229.7300, 18.7960, 11.7880



193.7090, 14.1210, 2.8970



97.6310, 5.5930, 3.2650



56.1600, 83.4360, 51.7880



13.7410, 20.2630, 12.7350

Inverse Universe

The Inverse Universe completely reimagines the original color for something new.



191.6860, 12.9280, 8.0000



229.7300, 18.7960, 11.7880



198.2910, -14.1210, -2.8970



97.6310, 5.5930, 3.2650



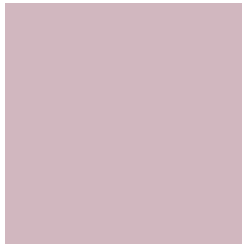
56.1600, 83.4360, 51.7880



13.7410, 20.2630, 12.7350

Previews

White Background



This preview shows how the YIQ color 191.6860, 12.9280, 8.0000 looks on a white background.

Color Contrast Check

Large Text (above 18pt) WCAG AA × Fail

Any Text WCAG AA × Fail

Large Text (above 18pt) WCAG AAA × Fail

Any Text WCAG AAA × Fail

Black Background



This preview shows how the YIQ color 191.6860, 12.9280, 8.0000 looks on a black background.

Color Contrast Check

Large Text (above 18pt) WCAG AA ✓ Pass

Any Text WCAG AA ✓ Pass

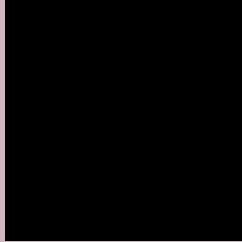
Large Text (above 18pt) WCAG AAA ✓ Pass

Any Text WCAG AAA ✓ Pass

If you want to check with other color combinations, try the [Color Contrast Checker](#).

YIQ 191.6860, 12.9280, 8.0000

Background



This preview shows how black text looks on a background with the YIQ color 191.6860, 12.9280, 8.0000.



This preview shows how white text looks on a background with the YIQ color 191.6860, 12.9280,

8.0000.

Color Blindness Simulation

Color vision deficiency is a very complex topic, and I could not describe the different causes any better than Wikipedia does, so if you want to learn more, you should check out their [article about color blindness](#).

Dichromacy



Original Color

191.6860, 12.9280, 8.0000

Protanopia

190.4670, 0.1830, 2.1910

Deuteranopia

191.6750, 11.4610, 7.0530



Tritanopia

191.9680, 12.1940, 10.2900

Trichromacy



Original Color

191.6860, 12.9280, 8.0000

Protanomaly

190.9730, 4.6300, 4.1980

Deuteranomaly

191.9740, 12.0570, 7.2650

Tritanomaly

191.7400, 12.8360, 9.6680

Monochromacy



Original Color

191.6860, 12.9280, 8.0000

Achromatopsia

192.0000, -0.0000, 0.0000

Achromatomaly

192.0330, 4.4010, 2.8410

CSS Examples

Text

The CSS property to change the color of the text to YIQ 191.6860, 12.9280, 8.0000 is called "color". The color property can be set on classes, ids or directly on the HTML element.

This example shows how text in the color `rgb(209, 183, 191)` looks like.

```
.text, #text, p{  
    color:rgb(209, 183, 191)  
}
```

If you want to add a text shadow in that color use the text-shadow property, you can generate a text shadow directly with our [CSS Text Shadow Generator](#).

Here you see how black text with a 4 pixel rgb(209, 183, 191) colored shadow looks like.

```
.shadow{ text-shadow: 4px 4px 2px rgb(209, 183, 191) }
```

Border

The CSS property to change the border of an element to YIQ 191.6860, 12.9280, 8.0000 is called "border". The border property can be set on classes, ids or directly on the HTML element.

This example shows the color as border, it can be applied via the CSS property "border" or "border-color".

```
.border, #border, table{ border:4px solid rgb(209, 183, 191) }
```


If only the border color should be changed use the property `border-color`.

```
.border{ border-color:rgb(209, 183, 191) }
```

If you want to add a box shadow in that color use:

Here you see how a box with a 4 pixel `rgb(209, 183, 191)` colored shadow looks like.

```
.boxshadow{ -moz-box-shadow:4px 4px 4px  
4px rgb(209, 183, 191); -webkit-box-  
shadow:4px 4px 4px 4px rgb(209, 183, 191);  
box-shadow:4px 4px 4px 4px rgb(209, 183,  
191) }
```

Background

The CSS property to change the background color of an element to YIQ 191.6860, 12.9280, 8.0000 is called "background". The background property can be set on classes, ids or directly on the HTML element.

```
.background, #background, body{  
background: rgb(209, 183, 191) }
```

If only the background color should be changed can be used:

```
.background{ background-color: rgb(209,  
183, 191) }
```

This example shows the color as background, it is applied via the CSS property "background".

To optimize and compress your CSS code, you can use our [online CSS compressor and optimizer](#) based on csstidy. If you want to create a linear or radial gradient as background or border, check our [CSS Gradient Generator](#).

Hey! You found this booklet interesting? Support Converting Colors with the new Membership Option!

The pro membership hides all ads, plus gives you double the colors in the color bucket, and more awesome pro features!

[Learn more, Memberships starting at \\$2.50/m!](#)

**Follow me
on Twitter!**

@ConvertingColor