

Converting Colors

YIQ(191.8880, 32.3700, -2.9420)

Have a look what the booklet for
YIQ(191.8880, 32.3700, -2.9420)
contains.

YIQ(191.8880, 32.3700, -2.9420)	3
<i>Conversions</i>	4
<i>Details</i>	6
<i>Harmonies</i>	12
<i>Previews</i>	24
<i>Color Blindness Simulation</i>	28
<i>CSS Examples</i>	31

Color

**YIQ(191.8880, 32.3700,
-2.9420)**

Conversions

Conversions Part 1

Format	Color
Hex	DDB997
RGB	221, 185, 151
RGB Percent	87%, 73%, 59%
CMY	0.1333, 0.2745, 0.4077
CMYK	0.00, 0.16, 0.32, 0.13
HSL	29°, 51%, 73%
HSV	29°, 32%, 87%
XYZ	52.7587, 52.3019, 36.6096
YIQ	191.8880, 32.3700, -2.9420

Conversions

Conversions Part 2

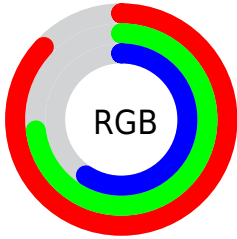
Format	Color
R _Y B	221, 217, 151
Decimal	14530967
CIE Lab	77.46, 8.07, 22.07
CIE LCh	77, 23.496, 69.915
Yxy	52.3019, 0.3724, 0.3692
Android (android.graphics.Color)	4292721047 (0xFFDDB997)
YUV	191.8880, -20.1578, 25.5312
Hunter-Lab	72.3201, 3.6586, 20.6105

Details

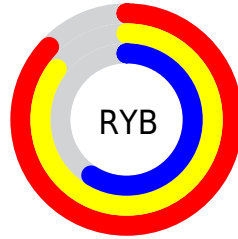
The YIQ color $191.8880, 32.3700, -2.9420$ is a light color, and the websafe version is hex FFCC99 . A complement of this color would be $180.1120, -32.3700, 2.9420$, and the grayscale version is $192.0000, -0.0000, 0.0000$.

A 20% lighter version of the original color is $241.0820, 19.9000, -8.2280$, and $138.2190, 29.9400, -2.9560$ is the 20% darker color. If you saturate the color by 10%, you get $182.9230, 42.4570, -4.0310$, and if you desaturate by 10%, it is $200.8530, 22.2830, -1.8530$.

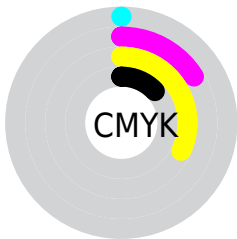
Distribution



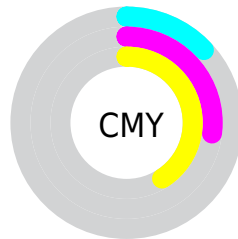
- Red (87%)
- Green (73%)
- Blue (59%)



- Red (87%)
- Yellow (85%)
- Blue (59%)



- Cyan (0%)
- Magenta (16%)
- Yellow (32%)
- Black (13%)



- Cyan (13%)
- Magenta (27%)
- Yellow (41%)

Brightness & Saturation Gradients

These gradients show how the YIQ color 191.8880, 32.3700, -2.9420 changes by changing the brightness by 10 percent. The first figure shows a shift by +10% for each color and the second figure -10%.

Similar to the brightness gradients but the following saturation gradients show a change of the YIQ color 191.8880, 32.3700, -2.9420 by changing the saturation by 10% instead.

191.8880, 32.3700,
-2.9420

191.8880, 32.3700,
-2.9420

255.0000, -0.0000,
-0.0000

164.7030, 31.4530,
-2.8430

241.0820, 19.9000,
-8.2280

138.2190, 29.9400,
-2.9560

252.6060, 6.7410,
-6.5310

112.7350, 28.4270,
-3.0690

87.9520, 26.3180,
-3.3940

64.4680, 24.8050,
-3.5070

41.4570, 23.3380,
-4.4540

21.9280, 17.6980,

-1.3580

0.0000, 0.0000,
0.0000

191.8880, 32.3700,
-2.9420

191.8880, 32.3700,
-2.9420

182.9230, 42.4570,
-4.0310

200.8530, 22.2830,
-1.8530

173.3710, 52.8190,
-4.5970

210.4050, 11.9210,
-1.2870

164.4060, 62.9060,
-5.6860

219.3700, 1.8340,
-0.1980

154.8540, 73.2680,
-6.2520

228.9220, -8.5280,
0.3680

145.8890, 83.3550,
-7.3410

237.2030,
-16.6890, -0.4090

■ 136.8100, 93.7630,
-8.7410

■ 243.6600,
-19.7140, -6.1620

■ 128.8880,
102.2910, -9.1090

■ 244.8340,
-20.2640, -7.2080

Harmonies

Analogous

The Analogous color harmony consists of three colors that are next to each other on the color wheel.



193.7350, 37.5950, 6.9950



191.8880, 32.3700, -2.9420



189.3760, 18.8920, -11.9880

Triad

The Triadic color harmony groups three colors that are evenly spaced from another and form a triangle on the color wheel.



191.8880, 32.3700, -2.9420



182.3860, -39.7940, -16.7060



194.0670, -0.9660, 17.5140

Complementary

The Complementary color scheme is a pair of colors which are on the opposite of each other on the color wheel.



191.8880, 32.3700, -2.9420



180.1120, -32.3700, 2.9420

Split Complementary

Split-complementary colors differ from the complementary color scheme. The scheme consists of three colors, the original color and two neighbors of the complement color.



191.1180, -23.3390, 9.9810



191.8880, 32.3700, -2.9420



182.8940, -46.8560, -9.8640

Square

The Square scheme is like the rectangle color scheme, but the four colors are evenly spaced on the color wheel.



191.8880, 32.3700, -2.9420



184.6730, -21.7290, -19.2090



186.9260, -40.7140, -0.0260



195.6580, 19.2990, 19.1950

Rectangle

The Rectangle color scheme consists of four colors that form a rectangle on the color wheel.



191.8880, 32.3700, -2.9420



188.0970, 6.3760, -16.4400



186.9260, -40.7140, -0.0260



193.5930, -8.4390, 15.2810

Sweetspot

The Sweet Spot groups the original color and five complimentary colors.



191.8880, 32.3700, -2.9420



245.3340, 10.6830, -0.8770



176.0340, 30.1640, 26.0360



121.5940, 7.0150, -0.4810



0.0000, 0.0000, 0.0000



128.0000, -0.0000, -0.0000

Same Dimension

The Same Dimension uses a secret algorithm to generate beautiful new colors.



191.8880, 32.3700, -2.9420



214.5920, 44.8870, -4.0170



212.4330, 22.7450, -21.2470



105.2240, 5.1810, -0.2830



101.0350, 80.0080, -7.2560



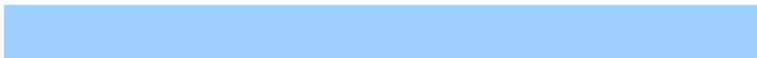
26.6680, 21.3660, -1.7540

Inverse Universe

The Inverse Universe completely reimagines the original color for something new.



180.1120, -32.3700, 2.9420



198.4080, -44.8870, 4.0170



159.5670, -22.7450, 21.2470



103.1890, -4.9060, 0.8060



71.9650, -80.0080, 7.2560



19.3320, -21.3660, 1.7540

Previews

White Background



This preview shows how the YIQ color 191.8880, 32.3700, -2.9420 looks on a white background.

Color Contrast Check

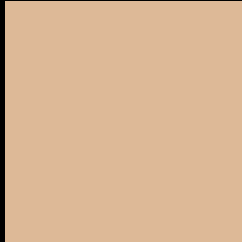
Large Text (above 18pt) WCAG AA × Fail

Any Text WCAG AA × Fail

Large Text (above 18pt) WCAG AAA × Fail

Any Text WCAG AAA × Fail

Black Background



This preview shows how the YIQ color 191.8880, 32.3700, -2.9420 looks on a black background.

Color Contrast Check

Large Text (above 18pt) WCAG AA ✓ Pass

Any Text WCAG AA ✓ Pass

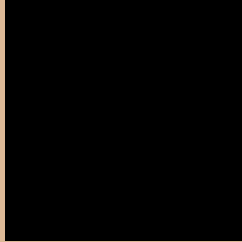
Large Text (above 18pt) WCAG AAA ✓ Pass

Any Text WCAG AAA ✓ Pass

If you want to check with other color combinations, try the [Color Contrast Checker](#).

YIQ 191.8880, 32.3700, -2.9420

Background



This preview shows how black text looks on a background with the YIQ color 191.8880, 32.3700, -2.9420.



This preview shows how white text looks on a background with the YIQ color 191.8880, 32.3700,

-2.9420.

Color Blindness Simulation

Color vision deficiency is a very complex topic, and I could not describe the different causes any better than Wikipedia does, so if you want to learn more, you should check out their [article about color blindness](#).

Dichromacy



Original Color

191.8880, 32.3700, -2.9420

Protanopia

190.3700, 19.0290, -8.9630

Deuteranopia

192.1980, 34.4330, -1.7830



Tritanopia

194.6490, 23.5180, 14.3180

Trichromacy



Original Color

191.8880, 32.3700, -2.9420

Protanomaly

191.1750, 24.0720, -6.7440

Deuteranomaly

191.8990, 33.8370, -1.9950

Tritanomaly

193.5150, 26.5910, 8.1830

Monochromacy



Original Color

191.8880, 32.3700, -2.9420

Achromatopsia

192.0000, -0.0000, 0.0000

Achromatomaly

191.8180, 12.1960, -0.7640

CSS Examples

Text

The CSS property to change the color of the text to YIQ 191.8880, 32.3700, -2.9420 is called "color". The color property can be set on classes, ids or directly on the HTML element.

This example shows how text in the color `rgb(221, 185, 151)` looks like.

```
.text, #text, p{  
    color:rgb(221, 185, 151)  
}
```

If you want to add a text shadow in that color use the text-shadow property, you can generate a text shadow directly with our [CSS Text Shadow Generator](#).

Here you see how black text with a 4 pixel rgb(221, 185, 151) colored shadow looks like.

```
.shadow{ text-shadow: 4px 4px 2px rgb(221, 185, 151) }
```

Border

The CSS property to change the border of an element to YIQ 191.8880, 32.3700, -2.9420 is called "border". The border property can be set on classes, ids or directly on the HTML element.

This example shows the color as border, it can be applied via the CSS property "border" or "border-color".

```
.border, #border, table{ border:4px solid rgb(221, 185, 151) }
```


If only the border color should be changed use the property `border-color`.

```
.border{ border-color:rgb(221, 185, 151) }
```

If you want to add a box shadow in that color use:

Here you see how a box with a 4 pixel `rgb(221, 185, 151)` colored shadow looks like.

```
.boxshadow{ -moz-box-shadow:4px 4px 4px 4px rgb(221, 185, 151); -webkit-box-shadow:4px 4px 4px 4px rgb(221, 185, 151); box-shadow:4px 4px 4px 4px rgb(221, 185, 151) }
```

Background

The CSS property to change the background color of an element to YIQ 191.8880, 32.3700, -2.9420 is called "background". The background property can be set on classes, ids or directly on the HTML element.

```
.background, #background, body{  
background: rgb(221, 185, 151) }
```

If only the background color should be changed can be used:

```
.background{ background-color: rgb(221,  
185, 151) }
```

This example shows the color as background, it is applied via the CSS property "background".

To optimize and compress your CSS code, you can use our [online CSS compressor and optimizer](#) based on csstidy. If you want to create a linear or radial gradient as background or border, check our [CSS Gradient Generator](#).

Hey! You found this booklet interesting? Support Converting Colors with the new Membership Option!

The pro membership hides all ads, plus gives you double the colors in the color bucket, and more awesome pro features!

[Learn more, Memberships starting at \\$2.50/m!](#)

**Follow me
on Twitter!**

@ConvertingColor