

# Converting Colors

YIQ(192.1090, 7.2430, 6.4030)

Have a look what the booklet for  
YIQ(192.1090, 7.2430, 6.4030)  
contains.

- YIQ(192.1090, 7.2430, 6.4030) ..... 3**
- Conversions* ..... 4**
- Details* ..... 6**
- Harmonies* ..... 12**
- Previews* ..... 24**
- Color Blindness Simulation* ..... 28**
- CSS Examples* ..... 31**

# Color

**YIQ(192.1090, 7.2430,  
6.4030)**

# Conversions

## Conversions Part 1

<b>Format</b>	<b>Color</b>
Hex	CBBAC3
RGB	203, 186, 195
RGB Percent	80%, 73%, 76%
CMY	0.2039, 0.2706, 0.2353
CMYK	0.00, 0.08, 0.04, 0.20
HSL	328°, 14%, 76%
HSV	328°, 8%, 80%
XYZ	52.0402, 51.7534, 58.8796
YIQ	192.1090, 7.2430, 6.4030

# Conversions

## Conversions Part 2

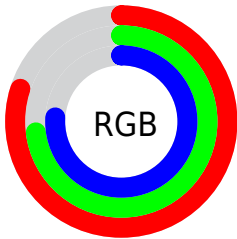
Format	Color
R <sub>Y</sub> B	203, 186, 195
Decimal	13351619
CIE Lab	77.13, 7.61, -2.37
CIE LCh	77, 7.968, 342.717
Yxy	51.7534, 0.3199, 0.3181
Android (android.graphics.Color)	4291541699 (0xFFCBBAC3)
YUV	192.1090, 1.4253, 9.5514
Hunter-Lab	71.9398, 3.2295, 1.8315

# Details

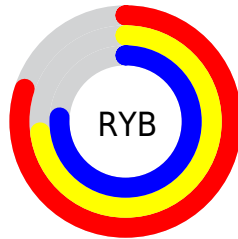
The YIQ color  $192.1090, 7.2430, 6.4030$  is a light color, and the websafe version is hex `CCCCCC`. A complement of this color would be  $196.8910, -7.2430, -6.4030$ , and the grayscale version is  $192.0000, -0.0000, 0.0000$ .

A 20% lighter version of the original color is  $247.0270, 4.5380, 5.8660$ , and  $138.6960, 6.9680, 5.8800$  is the 20% darker color. If you saturate the color by 10%, you get  $179.2290, 15.9530, 13.7530$ , and if you desaturate by 10%, it is  $204.9890, -1.4670, -0.9470$ .

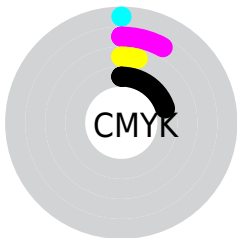
# Distribution



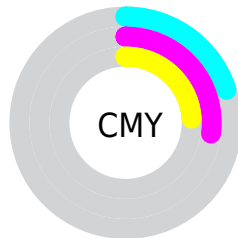
- Red (80%)
- Green (73%)
- Blue (76%)



- Red (80%)
- Yellow (73%)
- Blue (76%)



- Cyan (0%)
- Magenta (8%)
- Yellow (4%)
- Black (20%)



- Cyan (20%)
- Magenta (27%)
- Yellow (24%)

# Brightness & Saturation Gradients

These gradients show how the YIQ color 192.1090, 7.2430, 6.4030 changes by changing the brightness by 10 percent. The first figure shows a shift by +10% for each color and the second figure -10%.

Similar to the brightness gradients but the following saturation gradients show a change of the YIQ color 192.1090, 7.2430, 6.4030 by changing the saturation by 10% instead.



■ 192.1090, 7.2430,  
6.4030

■ 192.1090, 7.2430,  
6.4030

255.0000, -0.0000,  
-0.0000

■ 165.1090, 7.2430,  
6.4030

■ 247.0270, 4.5380,  
5.8660

■ 138.6960, 6.9680,  
5.8800

■ 113.3970, 6.3720,  
5.6680

■ 88.3970, 6.3720,  
5.6680

■ 65.0980, 5.7760,  
5.4560

■ 43.0980, 5.7760,  
5.4560

■ 22.3860, 4.9050,

4.7210

0.0000, 0.0000,  
0.0000

192.1090, 7.2430,  
6.4030

192.1090, 7.2430,  
6.4030

179.2290, 15.9530,  
13.7530

204.9890, -1.4670,  
-0.9470

165.8760, 24.6170,  
21.9370

218.3420,  
-10.1310, -9.1310

152.9960, 33.3270,  
29.2870

231.2220,  
-18.8410, -16.4810

140.2300, 41.7160,  
36.9480

236.9440,  
-23.9300, -17.8660

126.7630, 50.7010,  
44.8210

238.0840,  
-27.1400, -14.7560

■ 113.9970, 59.0900,  
52.4820

■ 239.1100,  
-30.0290, -11.9570

■ 101.1170, 67.8000,  
59.8320

■ 239.4520,  
-30.9920, -11.0240

■ 88.3510, 76.1890,  
67.4930

■ 74.8840, 85.1740,  
75.3660

# Harmonies

## Analogous

The Analogous color harmony consists of three colors that are next to each other on the color wheel.



191.8740, 0.5950, 5.7390



192.1090, 7.2430, 6.4030



192.3930, 12.1950, 4.7630

# Triad

The Triadic color harmony groups three colors that are evenly spaced from another and form a triangle on the color wheel.



192.1090, 7.2430, 6.4030



189.8880, 6.0070, -4.2410



188.4050, -14.4420, -2.5860

# Complementary

The Complementary color scheme is a pair of colors which are on the opposite of each other on the color wheel.



192.1090, 7.2430, 6.4030



196.8910, -7.2430, -6.4030

# Split Complementary

Split-complementary colors differ from the complementary color scheme. The scheme consists of three colors, the original color and two neighbors of the complement color.



188.1940, -12.4700, -5.2860



192.1090, 7.2430, 6.4030



189.0120, -0.2740, -6.0500

# Square

The Square scheme is like the rectangle color scheme, but the four colors are evenly spaced on the color wheel.



192.1090, 7.2430, 6.4030



191.2200, 11.0040, -1.1880



188.5920, -7.8390, -6.6150



189.1820, -12.1960, 0.7640



# Rectangle

The Rectangle color scheme consists of four colors that form a rectangle on the color wheel.



192.1090, 7.2430, 6.4030



191.9370, 13.4790, 3.5190



188.5920, -7.8390, -6.6150



188.7640, -14.0750, -3.7310

# Sweetspot

The Sweet Spot groups the original color and five complimentary colors.



192.1090, 7.2430, 6.4030



249.8480, 3.4840, 2.9400



190.3300, -0.6890, 6.9830



124.1360, 2.6130, 2.2050



0.0000, 0.0000, 0.0000



128.0000, -0.0000, -0.0000



# Same Dimension

The Same Dimension uses a secret algorithm to generate beautiful new colors.



192.1090, 7.2430, 6.4030



238.9570, 10.7270, 9.3430



191.1970, 9.8110, 3.9150



95.5600, 4.3550, 3.6750



59.6660, 70.6880, 62.5600



13.6420, 16.2280, 14.2760



# Inverse Universe

The Inverse Universe completely reimagines the original color for something new.



192.1090, 7.2430, 6.4030



238.9570, 10.7270, 9.3430



197.8030, -9.8110, -3.9150



95.5600, 4.3550, 3.6750



59.6660, 70.6880, 62.5600

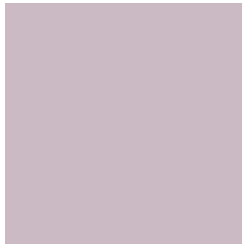


13.6420, 16.2280, 14.2760



# Previews

## White Background



This preview shows how the YIQ color 192.1090, 7.2430, 6.4030 looks on a white background.

## Color Contrast Check

Large Text (above 18pt) WCAG AA × Fail

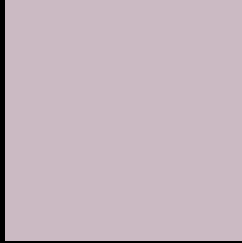
Any Text WCAG AA × Fail

Large Text (above 18pt) WCAG AAA × Fail

Any Text WCAG AAA × Fail



# Black Background



This preview shows how the YIQ color 192.1090, 7.2430, 6.4030 looks on a black background.

## Color Contrast Check

Large Text (above 18pt) WCAG AA ✓ Pass

Any Text WCAG AA ✓ Pass

Large Text (above 18pt) WCAG AAA ✓ Pass

Any Text WCAG AAA ✓ Pass

If you want to check with other color combinations, try the [Color Contrast Checker](#).

**YIQ 192.1090, 7.2430, 6.4030**

## **Background**



This preview shows how black text looks on a background with the YIQ color 192.1090, 7.2430, 6.4030.



This preview shows how white text looks on a background with the YIQ color 192.1090, 7.2430,



# Color Blindness Simulation

Color vision deficiency is a very complex topic, and I could not describe the different causes any better than Wikipedia does, so if you want to learn more, you should check out their [article about color blindness](#).

## Dichromacy



### Original Color

192.1090, 7.2430, 6.4030

### Protanopia

190.8090, -0.7800, 3.1240

### Deuteranopia

192.7180, 9.9020, 7.7740



## Tritanopia

192.3910, 6.5090, 8.6930

# Trichromacy



## Original Color

192.1090, 7.2430, 6.4030

## Protanomaly

191.3040, 2.2000, 4.1840

## Deuteranomaly

192.4190, 9.3060, 7.5620

## Tritanomaly

192.1630, 7.1510, 8.0710

# Monochromacy



## Original Color

192.1090, 7.2430, 6.4030

## Achromatopsia

192.0000, -0.0000, 0.0000

## Achromatomaly

192.1360, 2.6130, 2.2050

# CSS Examples

## Text

The CSS property to change the color of the text to YIQ 192.1090, 7.2430, 6.4030 is called "color". The color property can be set on classes, ids or directly on the HTML element.

This example shows how text in the color `rgb(203, 186, 195)` looks like.

```
.text, #text, p{  
    color:rgb(203, 186, 195)  
}
```

If you want to add a text shadow in that color use the text-shadow property, you can generate a text shadow directly with our [CSS Text Shadow Generator](#).

Here you see how black text with a 4 pixel rgb(203, 186, 195) colored shadow looks like.

```
.shadow{ text-shadow: 4px 4px 2px rgb(203, 186, 195) }
```

## Border

The CSS property to change the border of an element to YIQ 192.1090, 7.2430, 6.4030 is called "border". The border property can be set on classes, ids or directly on the HTML element.

This example shows the color as border, it can be applied via the CSS property "border" or "border-color".

```
.border, #border, table{ border:4px solid rgb(203, 186, 195) }
```



If only the border color should be changed use the property `border-color`.

```
.border{ border-color:rgb(203, 186, 195) }
```

If you want to add a box shadow in that color use:

Here you see how a box with a 4 pixel `rgb(203, 186, 195)` colored shadow looks like.

```
.boxshadow{ -moz-box-shadow:4px 4px 4px  
4px rgb(203, 186, 195); -webkit-box-  
shadow:4px 4px 4px 4px rgb(203, 186, 195);  
box-shadow:4px 4px 4px 4px rgb(203, 186,  
195) }
```

# Background

The CSS property to change the background color of an element to YIQ 192.1090, 7.2430, 6.4030 is called "background". The background property can be set on classes, ids or directly on the HTML element.

```
.background, #background, body{  
background: rgb(203, 186, 195) }
```

If only the background color should be changed can be used:

```
.background{ background-color: rgb(203,  
186, 195) }
```

This example shows the color as background, it is applied via the CSS property "background".

To optimize and compress your CSS code, you can use our [online CSS compressor and optimizer](#) based on csstidy. If you want to create a linear or radial gradient as background or border, check our [CSS Gradient Generator](#).

Hey! You found this booklet interesting? Support Converting Colors with the new Membership Option!

The pro membership hides all ads, plus gives you double the colors in the color bucket, and more awesome pro features!

**[Learn more, Memberships starting at \\$2.50/m!](#)**

**Follow me  
on Twitter!**

@ConvertingColor