

Converting Colors

YIQ(192.6680, 30.5340, 8.3100)

Have a look what the booklet for
YIQ(192.6680, 30.5340, 8.3100)
contains.

YIQ(192.6680, 30.5340, 8.3100)	3
<i>Conversions</i>	4
<i>Details</i>	6
<i>Harmonies</i>	12
<i>Previews</i>	24
<i>Color Blindness Simulation</i>	28
<i>CSS Examples</i>	31

Color

**YIQ(192.6680, 30.5340,
8.3100)**

Conversions

Conversions Part 1

Format	Color
Hex	E3B3AD
RGB	227, 179, 173
RGB Percent	89%, 70%, 68%
CMY	0.1097, 0.2981, 0.3214
CMYK	0.00, 0.21, 0.24, 0.11
HSL	7°, 49%, 78%
HSV	7°, 24%, 89%
XYZ	55.3494, 51.5860, 46.5913
YIQ	192.6680, 30.5340, 8.3100

Conversions

Conversions Part 2

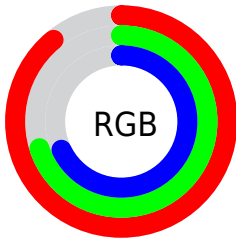
Format	Color
R _Y B	227, 180, 173
Decimal	14922669
CIE Lab	77.03, 16.53, 9.69
CIE LCh	77, 19.165, 30.373
Yxy	51.5860, 0.3605, 0.3360
Android (android.graphics.Color)	4293112749 (0xFFE3B3AD)
YUV	192.6680, -9.6963, 30.1092
Hunter-Lab	71.8234, 11.8670, 11.8154

Details

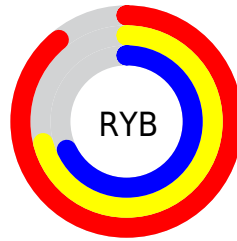
The YIQ color **192.6680, 30.5340, 8.3100** is a light color, and the websafe version is hex **CC9999**. A complement of this color would be **207.3320, -30.5340, -8.3100**, and the grayscale version is **193.0000, -0.0000, -0.0000**.

A 20% lighter version of the original color is **240.1820, 14.1670, 2.0630**, and **138.8850, 28.4250, 7.9850** is the 20% darker color. If you saturate the color by 10%, you get **178.3060, 43.4170, 11.6170**, and if you desaturate by 10%, it is **207.0300, 17.6510, 5.0030**.

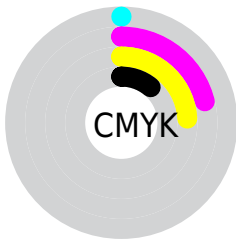
Distribution



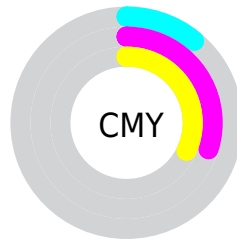
- Red (89%)
- Green (70%)
- Blue (68%)



- Red (89%)
- Yellow (71%)
- Blue (68%)



- Cyan (0%)
- Magenta (21%)
- Yellow (24%)
- Black (11%)



- Cyan (11%)
- Magenta (30%)
- Yellow (32%)

Brightness & Saturation Gradients

These gradients show how the YIQ color 192.6680, 30.5340, 8.3100 changes by changing the brightness by 10 percent. The first figure shows a shift by +10% for each color and the second figure -10%.

Similar to the brightness gradients but the following saturation gradients show a change of the YIQ color 192.6680, 30.5340, 8.3100 by changing the saturation by 10% instead.

■ 192.6680, 30.5340,
8.3100

■ 192.6680, 30.5340,
8.3100

255.0000, -0.0000,
-0.0000

■ 165.3690, 29.9380,
8.0980

■ 240.1820, 14.1670,
2.0630

■ 138.8850, 28.4250,
7.9850

■ 113.2870, 27.2330,
7.5610

■ 88.3900, 25.4450,
6.9250

■ 64.9060, 23.9320,
6.8120

■ 42.1230, 21.8230,
6.4870

■ 19.9550, 22.2360,

4.5080

■ 2.9900, 5.9600,
2.1200

■ 0.0000, 0.0000,
0.0000

■ 192.6680, 30.5340,
8.3100

■ 192.6680, 30.5340,
8.3100

■ 178.3060, 43.4170,
11.6170

■ 207.0300, 17.6510,
5.0030

■ 164.0580, 55.9790,
15.2350

■ 221.2780, 5.0890,
1.3850

■ 149.1090, 69.1370,
19.0650

■ 236.2270, -8.0690,
-2.4450

■ 134.7470, 82.0200,
22.3720

■ 246.6280,
-16.6880, -5.9360

■ 120.4990, 94.5820,
25.9900

■ 106.1370,
107.4650, 29.2970

■ 91.7750, 120.3480,
32.6040

■ 82.5480, 128.4170,
35.0490

Harmonies

Analogous

The Analogous color harmony consists of three colors that are next to each other on the color wheel.



193.5350, 23.8390, 14.0070



192.6680, 30.5340, 8.3100



191.1420, 28.8390, 0.4790

Triad

The Triadic color harmony groups three colors that are evenly spaced from another and form a triangle on the color wheel.



192.6680, 30.5340, 8.3100



185.4570, -12.1930, -15.8170



189.1840, -23.7050, 5.5990

Complementary

The Complementary color scheme is a pair of colors which are on the opposite of each other on the color wheel.



192.6680, 30.5340, 8.3100



207.3320, -30.5340, -8.3100

Split Complementary

Split-complementary colors differ from the complementary color scheme. The scheme consists of three colors, the original color and two neighbors of the complement color.



185.8680, -34.7990, -2.5990



192.6680, 30.5340, 8.3100



183.8990, -28.0570, -14.6570

Square

The Square scheme is like the rectangle color scheme, but the four colors are evenly spaced on the color wheel.



192.6680, 30.5340, 8.3100



187.6070, 5.0000, -13.5280



183.7550, -36.2190, -9.9070



192.3820, -6.4670, 12.5810

Rectangle

The Rectangle color scheme consists of four colors that form a rectangle on the color wheel.



192.6680, 30.5340, 8.3100



190.3430, 23.6590, -4.7650



183.7550, -36.2190, -9.9070



188.2650, -28.4270, 3.0690

Sweetspot

The Sweet Spot groups the original color and five complimentary colors.



192.6680, 30.5340, 8.3100



243.5560, 10.1780, 2.7700



194.7320, 16.4550, 26.6870



120.8760, 6.2810, 1.8090



0.0000, 0.0000, 0.0000



128.0000, -0.0000, -0.0000

Same Dimension

The Same Dimension uses a secret algorithm to generate beautiful new colors.



192.6680, 30.5340, 8.3100



207.8220, 41.9040, 11.5040



207.9300, 23.3840, -5.2880



107.7620, 6.6020, 1.4980



65.2610, 101.1840, 27.4880



18.7710, 28.7460, 7.6740

Inverse Universe

The Inverse Universe completely reimagines the original color for something new.



207.3320, -30.5340, -8.3100



228.1780, -41.9040, -11.5040



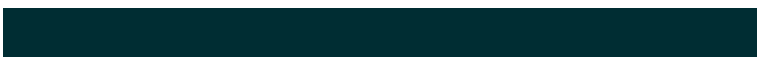
192.0700, -23.3840, 5.2880



110.2380, -6.6020, -1.4980



113.7390, -101.1840, -27.4880



32.2290, -28.7460, -7.6740

Previews

White Background



This preview shows how the YIQ color 192.6680, 30.5340, 8.3100 looks on a white background.

Color Contrast Check

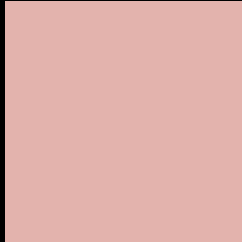
Large Text (above 18pt) WCAG AA × Fail

Any Text WCAG AA × Fail

Large Text (above 18pt) WCAG AAA × Fail

Any Text WCAG AAA × Fail

Black Background



This preview shows how the YIQ color 192.6680, 30.5340, 8.3100 looks on a black background.

Color Contrast Check

Large Text (above 18pt) WCAG AA ✓ Pass

Any Text WCAG AA ✓ Pass

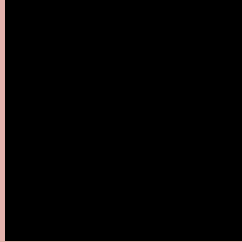
Large Text (above 18pt) WCAG AAA ✓ Pass

Any Text WCAG AAA ✓ Pass

If you want to check with other color combinations, try the [Color Contrast Checker](#).

YIQ 192.6680, 30.5340, 8.3100

Background



This preview shows how black text looks on a background with the YIQ color 192.6680, 30.5340, 8.3100.



This preview shows how white text looks on a background with the YIQ color 192.6680, 30.5340,

8.3100.

Color Blindness Simulation

Color vision deficiency is a very complex topic, and I could not describe the different causes any better than Wikipedia does, so if you want to learn more, you should check out their [article about color blindness](#).

Dichromacy



Original Color

192.6680, 30.5340, 8.3100

Protanopia

190.8390, 7.7030, -1.9370

Deuteranopia

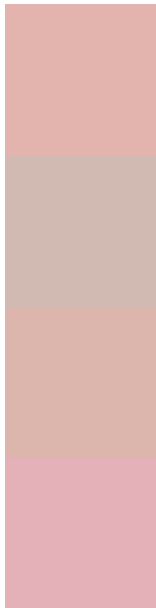
192.2000, 22.9240, 3.0520



Tritanopia

193.4430, 27.0940, 15.5900

Trichromacy



Original Color

192.6680, 30.5340, 8.3100

Protanomaly

191.5520, 16.0010, 1.8650

Deuteranomaly

192.2220, 25.8580, 4.9460

Tritanomaly

193.0470, 28.1490, 12.9890

Monochromacy



Original Color

192.6680, 30.5340, 8.3100

Achromatopsia

193.0000, -0.0000, -0.0000

Achromatomaly

192.8550, 10.7740, 2.9820

CSS Examples

Text

The CSS property to change the color of the text to YIQ 192.6680, 30.5340, 8.3100 is called "color". The color property can be set on classes, ids or directly on the HTML element.

This example shows how text in the color `rgb(227, 179, 173)` looks like.

```
.text, #text, p{  
    color:rgb(227, 179, 173)  
}
```

If you want to add a text shadow in that color use the text-shadow property, you can generate a text shadow directly with our [CSS Text Shadow Generator](#).

Here you see how black text with a 4 pixel rgb(227, 179, 173) colored shadow looks like.

```
.shadow{ text-shadow: 4px 4px 2px rgb(227, 179, 173) }
```

Border

The CSS property to change the border of an element to YIQ 192.6680, 30.5340, 8.3100 is called "border". The border property can be set on classes, ids or directly on the HTML element.

This example shows the color as border, it can be applied via the CSS property "border" or "border-color".

```
.border, #border, table{ border:4px solid rgb(227, 179, 173) }
```


If only the border color should be changed use the property `border-color`.

```
.border{ border-color:rgb(227, 179, 173) }
```

If you want to add a box shadow in that color use:

Here you see how a box with a 4 pixel `rgb(227, 179, 173)` colored shadow looks like.

```
.boxshadow{ -moz-box-shadow:4px 4px 4px  
4px rgb(227, 179, 173); -webkit-box-  
shadow:4px 4px 4px 4px rgb(227, 179, 173);  
box-shadow:4px 4px 4px 4px rgb(227, 179,  
173) }
```

Background

The CSS property to change the background color of an element to YIQ 192.6680, 30.5340, 8.3100 is called "background". The background property can be set on classes, ids or directly on the HTML element.

```
.background, #background, body{  
background: rgb(227, 179, 173) }
```

If only the background color should be changed can be used:

```
.background{ background-color: rgb(227,  
179, 173) }
```

This example shows the color as background, it is applied via the CSS property "background".

To optimize and compress your CSS code, you can use our [online CSS compressor and optimizer](#) based on csstidy. If you want to create a linear or radial gradient as background or border, check our [CSS Gradient Generator](#).

Hey! You found this booklet interesting? Support Converting Colors with the new Membership Option!

The pro membership hides all ads, plus gives you double the colors in the color bucket, and more awesome pro features!

[Learn more, Memberships starting at \\$2.50/m!](#)

**Follow me
on Twitter!**

@ConvertingColor