

Converting Colors

YIQ(192.8920, 26.5470, -2.0370)

Have a look what the booklet for
YIQ(192.8920, 26.5470, -2.0370)
contains.

YIQ(192.8920, 26.5470, -2.0370)	3
<i>Conversions</i>	4
<i>Details</i>	6
<i>Harmonies</i>	12
<i>Previews</i>	24
<i>Color Blindness Simulation</i>	28
<i>CSS Examples</i>	31

Color

**YIQ(192.8920, 26.5470,
-2.0370)**

Conversions

Conversions Part 1

Format	Color
Hex	D9BBA0
RGB	217, 187, 160
RGB Percent	85%, 73%, 63%
CMY	0.1490, 0.2667, 0.3724
CMYK	0.00, 0.14, 0.26, 0.15
HSL	28°, 43%, 74%
HSV	28°, 26%, 85%
XYZ	52.7350, 52.8283, 40.6899
YIQ	192.8920, 26.5470, -2.0370

Conversions

Conversions Part 2

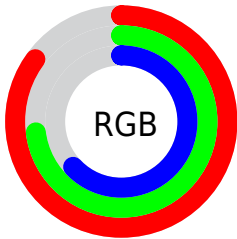
Format	Color
R_{YB}	217, 211, 160
Decimal	14269344
CIE _{Lab}	77.77, 6.66, 17.62
CIE _{LCh}	78, 18.837, 69.293
Yxy	52.8283, 0.3606, 0.3612
Android (android.graphics.Color)	4292459424 (0xFFD9BBA0)
YUV	192.8920, -16.2158, 21.1427
Hunter-Lab	72.6831, 2.3148, 17.6860

Details

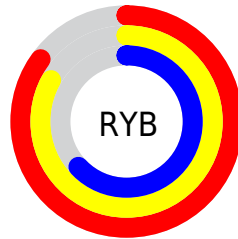
The YIQ color $192.8920, 26.5470, -2.0370$ is a light color, and the websafe version is hex `CCCC99`. A complement of this color would be $184.1080, -26.5470, 2.0370$, and the grayscale version is $193.0000, -0.0000, -0.0000$.

A 20% lighter version of the original color is $243.3960, 16.1400, -6.1640$, and $139.1090, 24.4380, -2.3620$ is the 20% darker color. If you saturate the color by 10%, you get $183.9270, 36.6340, -3.1260$, and if you desaturate by 10%, it is $201.8570, 16.4600, -0.9480$.

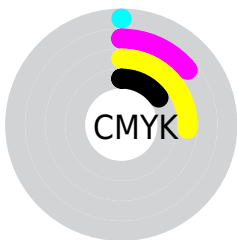
Distribution



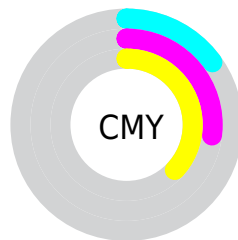
- Red (85%)
- Green (73%)
- Blue (63%)



- Red (85%)
- Yellow (83%)
- Blue (63%)



- Cyan (0%)
- Magenta (14%)
- Yellow (26%)
- Black (15%)



- Cyan (15%)
- Magenta (27%)
- Yellow (37%)

Brightness & Saturation Gradients

These gradients show how the YIQ color 192.8920, 26.5470, -2.0370 changes by changing the brightness by 10 percent. The first figure shows a shift by +10% for each color and the second figure -10%.

Similar to the brightness gradients but the following saturation gradients show a change of the YIQ color 192.8920, 26.5470, -2.0370 by changing the saturation by 10% instead.

■ 192.8920, 26.5470,
-2.0370

■ 192.8920, 26.5470,
-2.0370

■ 255.0000, -0.0000,
-0.0000

■ 165.7070, 25.6300,
-1.9380

■ 243.3960, 16.1400,
-6.1640

■ 139.1090, 24.4380,
-2.3620

■ 253.6320, 3.8520,
-3.7320

■ 113.9240, 23.5210,
-2.2630

■ 88.8530, 22.2830,
-1.8530

■ 65.3690, 20.7700,
-1.9660

■ 42.8850, 19.2570,
-2.0790

■ 22.2160, 16.8270,

-2.0930

■ 0.0000, 0.0000,
0.0000

■ 192.8920, 26.5470,
-2.0370

■ 192.8920, 26.5470,
-2.0370

■ 183.9270, 36.6340,
-3.1260

■ 201.8570, 16.4600,
-0.9480

■ 174.4890, 46.6750,
-3.3810

■ 211.2950, 6.4190,
-0.6930

■ 165.5240, 56.7620,
-4.4700

■ 220.2600, -3.6680,
0.3960

■ 155.9720, 67.1240,
-5.0360

■ 229.8120,
-14.0300, 0.9620

■ 147.1210, 76.8900,
-5.8140

■ 237.1810,
-19.6230, -2.3030

■ 137.5690, 87.2520,
-6.3800

■ 243.6380,
-22.6480, -8.0560

■ 128.6040, 97.3390,
-7.4690

■ 125.3440,
101.0070, -7.8650

Harmonies

Analogous

The Analogous color harmony consists of three colors that are next to each other on the color wheel.



194.2010, 30.3510, 6.1190



192.8920, 26.5470, -2.0370



191.1030, 15.4070, -9.4010

Triad

The Triadic color harmony groups three colors that are evenly spaced from another and form a triangle on the color wheel.



192.8920, 26.5470, -2.0370



185.2840, -30.5790, -13.0030



194.5460, -1.0570, 13.6550

Complementary

The Complementary color scheme is a pair of colors which are on the opposite of each other on the color wheel.



192.8920, 26.5470, -2.0370



184.1080, -26.5470, 2.0370

Split Complementary

Split-complementary colors differ from the complementary color scheme. The scheme consists of three colors, the original color and two neighbors of the complement color.



192.2880, -18.0660, 8.0300



192.8920, 26.5470, -2.0370



186.3360, -36.3570, -7.4050

Square

The Square scheme is like the rectangle color scheme, but the four colors are evenly spaced on the color wheel.



192.8920, 26.5470, -2.0370



186.5320, -16.7780, -15.3220



188.7160, -31.3150, 0.3410



195.9840, 15.2650, 15.2090

Rectangle

The Rectangle color scheme consists of four colors that form a rectangle on the color wheel.



192.8920, 26.5470, -2.0370



189.4330, 5.5500, -12.4820



188.7160, -31.3150, 0.3410



194.0830, -7.0630, 12.3690

Sweetspot

The Sweet Spot groups the original color and five complimentary colors.



192.8920, 26.5470, -2.0370



246.2630, 9.4450, -0.4670



180.4630, 24.3420, 21.4140



122.4090, 6.0980, -0.3820



0.0000, 0.0000, 0.0000



128.0000, -0.0000, -0.0000

Same Dimension

The Same Dimension uses a secret algorithm to generate beautiful new colors.



192.8920, 26.5470, -2.0370



220.4110, 38.1470, -3.0130



209.3280, 18.8470, -16.6810



105.2240, 5.1810, -0.2830



99.8610, 80.5580, -6.2100



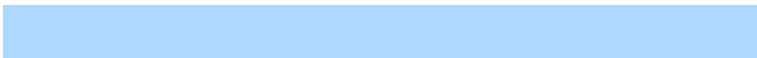
26.6680, 21.3660, -1.7540

Inverse Universe

The Inverse Universe completely reimagines the original color for something new.



184.1080, -26.5470, 2.0370



207.5890, -38.1470, 3.0130



167.6720, -18.8470, 16.6810



103.1890, -4.9060, 0.8060



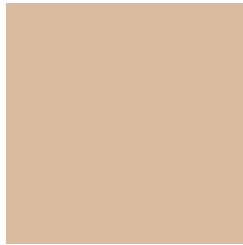
73.1390, -80.5580, 6.2100



19.3320, -21.3660, 1.7540

Previews

White Background



This preview shows how the YIQ color 192.8920, 26.5470, -2.0370 looks on a white background.

Color Contrast Check

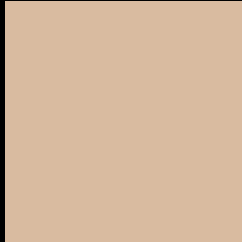
Large Text (above 18pt) WCAG AA × Fail

Any Text WCAG AA × Fail

Large Text (above 18pt) WCAG AAA × Fail

Any Text WCAG AAA × Fail

Black Background



This preview shows how the YIQ color 192.8920, 26.5470, -2.0370 looks on a black background.

Color Contrast Check

Large Text (above 18pt) WCAG AA ✓ Pass

Any Text WCAG AA ✓ Pass

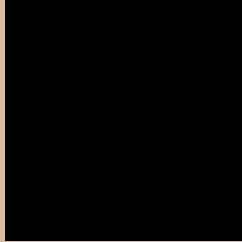
Large Text (above 18pt) WCAG AAA ✓ Pass

Any Text WCAG AAA ✓ Pass

If you want to check with other color combinations, try the [Color Contrast Checker](#).

YIQ 192.8920, 26.5470, -2.0370

Background



This preview shows how black text looks on a background with the YIQ color 192.8920, 26.5470, -2.0370.



This preview shows how white text looks on a background with the YIQ color 192.8920, 26.5470,

-2.0370.

Color Blindness Simulation

Color vision deficiency is a very complex topic, and I could not describe the different causes any better than Wikipedia does, so if you want to learn more, you should check out their [article about color blindness](#).

Dichromacy



Original Color

192.8920, 26.5470, -2.0370

Protanopia

191.8690, 16.1860, -6.9980

Deuteranopia

193.2130, 30.0770, 0.0690



Tritanopia

195.2570, 18.7500, 12.6220

Trichromacy



Original Color

192.8920, 26.5470, -2.0370

Protanomaly

192.0760, 20.0370, -5.2030

Deuteranomaly

193.2020, 28.6100, -0.8780

Tritanomaly

194.6500, 21.7770, 7.3210

Monochromacy



Original Color

192.8920, 26.5470, -2.0370

Achromatopsia

193.0000, -0.0000, -0.0000

Achromatomaly

193.1490, 9.7660, -0.7780

CSS Examples

Text

The CSS property to change the color of the text to YIQ 192.8920, 26.5470, -2.0370 is called "color". The color property can be set on classes, ids or directly on the HTML element.

This example shows how text in the color `rgb(217, 187, 160)` looks like.

```
.text, #text, p{  
    color:rgb(217, 187, 160)  
}
```

If you want to add a text shadow in that color use the text-shadow property, you can generate a text shadow directly with our [CSS Text Shadow Generator](#).

Here you see how black text with a 4 pixel rgb(217, 187, 160) colored shadow looks like.

```
.shadow{ text-shadow: 4px 4px 2px rgb(217, 187, 160) }
```

Border

The CSS property to change the border of an element to YIQ 192.8920, 26.5470, -2.0370 is called "border". The border property can be set on classes, ids or directly on the HTML element.

This example shows the color as border, it can be applied via the CSS property "border" or "border-color".

```
.border, #border, table{ border:4px solid rgb(217, 187, 160) }
```


If only the border color should be changed use the property `border-color`.

```
.border{ border-color:rgb(217, 187, 160) }
```

If you want to add a box shadow in that color use:

Here you see how a box with a 4 pixel `rgb(217, 187, 160)` colored shadow looks like.

```
.boxshadow{ -moz-box-shadow:4px 4px 4px  
4px rgb(217, 187, 160); -webkit-box-  
shadow:4px 4px 4px 4px rgb(217, 187, 160);  
box-shadow:4px 4px 4px 4px rgb(217, 187,  
160) }
```

Background

The CSS property to change the background color of an element to YIQ 192.8920, 26.5470, -2.0370 is called "background". The background property can be set on classes, ids or directly on the HTML element.

```
.background, #background, body{  
background: rgb(217, 187, 160) }
```

If only the background color should be changed can be used:

```
.background{ background-color: rgb(217,  
187, 160) }
```

This example shows the color as background, it is applied via the CSS property "background".

To optimize and compress your CSS code, you can use our [online CSS compressor and optimizer](#) based on csstidy. If you want to create a linear or radial gradient as background or border, check our [CSS Gradient Generator](#).

Hey! You found this booklet interesting? Support Converting Colors with the new Membership Option!

The pro membership hides all ads, plus gives you double the colors in the color bucket, and more awesome pro features!

[Learn more, Memberships starting at \\$2.50/m!](#)

**Follow me
on Twitter!**

@ConvertingColor