

Converting Colors

YIQ(192.9800, 11.9200, 4.2400)

Have a look what the booklet for
YIQ(192.9800, 11.9200, 4.2400)
contains.

YIQ(192.9800, 11.9200, 4.2400)	3
<i>Conversions</i>	4
<i>Details</i>	6
<i>Harmonies</i>	12
<i>Previews</i>	24
<i>Color Blindness Simulation</i>	28
<i>CSS Examples</i>	31

Color

**YIQ(192.9800, 11.9200,
4.2400)**

Conversions

Conversions Part 1

Format	Color
Hex	CFBBBB
RGB	207, 187, 187
RGB Percent	81%, 73%, 73%
CMY	0.1882, 0.2667, 0.2666
CMYK	0.00, 0.10, 0.10, 0.19
HSL	360°, 17%, 77%
HSV	360°, 10%, 81%
XYZ	52.4750, 52.3926, 54.3675
YIQ	192.9800, 11.9200, 4.2400

Conversions

Conversions Part 2

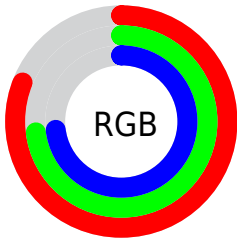
Format	Color
R_{YB}	207, 187, 187
Decimal	13614011
CIE Lab	77.52, 7.10, 2.56
CIE LCh	78, 7.547, 19.865
Yxy	52.3926, 0.3295, 0.3290
Android (android.graphics.Color)	4291804091 (0xFFCFBBBB)
YUV	192.9800, -2.9481, 12.2955
Hunter-Lab	72.3827, 2.7366, 6.1345

Details

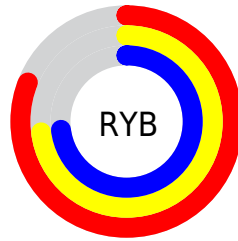
The YIQ color $192.9800, 11.9200, 4.2400$ is a light color, and the websafe version is hex `CCCCCC`. A complement of this color would be $201.0200, -11.9200, -4.2400$, and the grayscale version is $193.0000, -0.0000, -0.0000$.

A 20% lighter version of the original color is $246.5880, 7.1520, 2.5440$, and $139.6810, 11.3240, 4.0280$ is the 20% darker color. If you saturate the color by 10%, you get $178.2590, 24.4360, 8.6920$, and if you desaturate by 10%, it is $207.7010, -0.5960, -0.2120$.

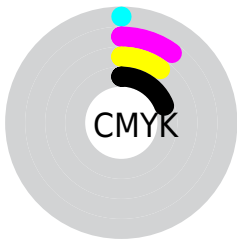
Distribution



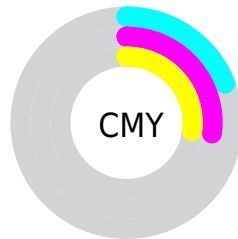
- Red (81%)
- Green (73%)
- Blue (73%)



- Red (81%)
- Yellow (73%)
- Blue (73%)



- Cyan (0%)
- Magenta (10%)
- Yellow (10%)
- Black (19%)



- Cyan (19%)
- Magenta (27%)
- Yellow (27%)

Brightness & Saturation Gradients

These gradients show how the YIQ color 192.9800, 11.9200, 4.2400 changes by changing the brightness by 10 percent. The first figure shows a shift by +10% for each color and the second figure -10%.

Similar to the brightness gradients but the following saturation gradients show a change of the YIQ color 192.9800, 11.9200, 4.2400 by changing the saturation by 10% instead.

■ 192.9800, 11.9200,
4.2400

■ 192.9800, 11.9200,
4.2400

255.0000, -0.0000,
-0.0000

■ 165.6810, 11.3240,
4.0280

■ 246.5880, 7.1520,
2.5440

■ 139.6810, 11.3240,
4.0280

■ 114.3820, 10.7280,
3.8160

■ 89.0830, 10.1320,
3.6040

■ 65.7840, 9.5360,
3.3920

■ 43.5990, 8.6190,
3.4910

■ 23.1860, 8.3440,

2.9680

0.0000, 0.0000,
0.0000

192.9800, 11.9200,
4.2400

192.9800, 11.9200,
4.2400

178.2590, 24.4360,
8.6920

207.7010, -0.5960,
-0.2120

164.2390, 36.3560,
12.9320

221.7210,
-12.5160, -4.4520

149.5180, 48.8720,
17.3840

236.4420,
-25.0320, -8.9040

134.7970, 61.3880,
21.8360

240.6480,
-28.6080, -10.1760

120.1900, 73.5830,
26.5990

■ 106.0560, 85.8240,
30.5280

■ 91.3350, 98.3400,
34.9800

■ 76.7280, 110.5350,
39.7430

■ 62.5940, 122.7760,
43.6720

Harmonies

Analogous

The Analogous color harmony consists of three colors that are next to each other on the color wheel.



193.1800, 8.4810, 5.9930



192.9800, 11.9200, 4.2400



192.2850, 12.3790, 1.4270

Triad

The Triadic color harmony groups three colors that are evenly spaced from another and form a triangle on the color wheel.



192.9800, 11.9200, 4.2400



189.6420, -2.1080, -5.8520



191.0790, -10.4080, 1.4000

Complementary

The Complementary color scheme is a pair of colors which are on the opposite of each other on the color wheel.



192.9800, 11.9200, 4.2400



201.0200, -11.9200, -4.2400

Split Complementary

Split-complementary colors differ from the complementary color scheme. The scheme consists of three colors, the original color and two neighbors of the complement color.



190.1170, -13.5710, -1.8510



192.9800, 11.9200, 4.2400



189.8200, -8.4810, -5.9930

Square

The Square scheme is like the rectangle color scheme, but the four colors are evenly spaced on the color wheel.



192.9800, 11.9200, 4.2400



190.4040, 4.4940, -4.3540



189.7210, -12.5160, -4.4520



192.2970, -5.0900, 4.1420

Rectangle

The Rectangle color scheme consists of four colors that form a rectangle on the color wheel.



192.9800, 11.9200, 4.2400



191.7470, 10.9580, -0.3540



189.7210, -12.5160, -4.4520



190.9540, -11.5540, 0.1420

Sweetspot

The Sweet Spot groups the original color and five complimentary colors.



192.9800, 11.9200, 4.2400



249.3920, 4.7680, 1.6960



195.2600, 5.5000, 10.4600



123.7940, 3.5760, 1.2720



0.0000, 0.0000, 0.0000



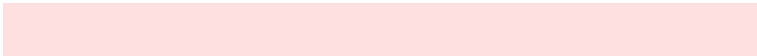
128.0000, -0.0000, -0.0000

Same Dimension

The Same Dimension uses a secret algorithm to generate beautiful new colors.



192.9800, 11.9200, 4.2400



233.2690, 18.4760, 6.5720



198.8500, 9.1700, -0.9900



97.2890, 6.5560, 2.3320



50.2320, 100.1280, 35.6160



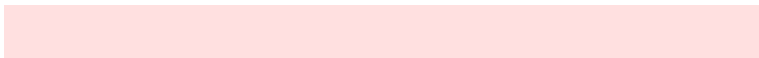
12.2590, 24.4360, 8.6920

Inverse Universe

The Inverse Universe completely reimagines the original color for something new.



192.9800, 11.9200, 4.2400



233.2690, 18.4760, 6.5720



195.1500, -9.1700, 0.9900



97.2890, 6.5560, 2.3320



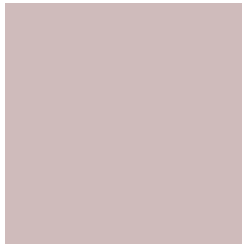
50.2320, 100.1280, 35.6160



12.2590, 24.4360, 8.6920

Previews

White Background



This preview shows how the YIQ color 192.9800, 11.9200, 4.2400 looks on a white background.

Color Contrast Check

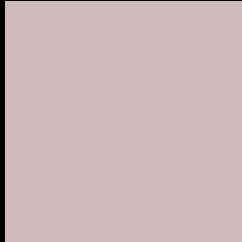
Large Text (above 18pt) WCAG AA × Fail

Any Text WCAG AA × Fail

Large Text (above 18pt) WCAG AAA × Fail

Any Text WCAG AAA × Fail

Black Background



This preview shows how the YIQ color 192.9800, 11.9200, 4.2400 looks on a black background.

Color Contrast Check

Large Text (above 18pt) WCAG AA ✓ Pass

Any Text WCAG AA ✓ Pass

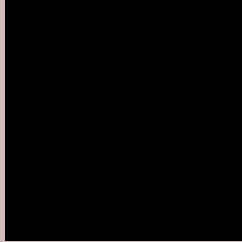
Large Text (above 18pt) WCAG AAA ✓ Pass

Any Text WCAG AAA ✓ Pass

If you want to check with other color combinations, try the [Color Contrast Checker](#).

YIQ 192.9800, 11.9200, 4.2400

Background



This preview shows how black text looks on a background with the YIQ color 192.9800, 11.9200, 4.2400.



This preview shows how white text looks on a background with the YIQ color 192.9800, 11.9200,

4.2400.

Color Blindness Simulation

Color vision deficiency is a very complex topic, and I could not describe the different causes any better than Wikipedia does, so if you want to learn more, you should check out their [article about color blindness](#).

Dichromacy



Original Color

192.9800, 11.9200, 4.2400

Protanopia

191.9680, 3.0260, 0.2260

Deuteranopia

193.3010, 15.4500, 6.3460



Tritanopia

193.8860, 9.4890, 9.7530

Trichromacy



Original Color

192.9800, 11.9200, 4.2400

Protanomaly

192.4630, 6.0060, 1.2860

Deuteranomaly

193.2900, 13.9830, 5.3990

Tritanomaly

193.6040, 10.2230, 7.4630

Monochromacy



Original Color

192.9800, 11.9200, 4.2400

Achromatopsia

193.0000, -0.0000, -0.0000

Achromatomaly

193.0930, 4.1720, 1.4840

CSS Examples

Text

The CSS property to change the color of the text to YIQ 192.9800, 11.9200, 4.2400 is called "color". The color property can be set on classes, ids or directly on the HTML element.

This example shows how text in the color `rgb(207, 187, 187)` looks like.

```
.text, #text, p{  
    color:rgb(207, 187, 187)  
}
```

If you want to add a text shadow in that color use the text-shadow property, you can generate a text shadow directly with our [CSS Text Shadow Generator](#).

Here you see how black text with a 4 pixel rgb(207, 187, 187) colored shadow looks like.

```
.shadow{ text-shadow: 4px 4px 2px rgb(207, 187, 187) }
```

Border

The CSS property to change the border of an element to YIQ 192.9800, 11.9200, 4.2400 is called "border". The border property can be set on classes, ids or directly on the HTML element.

This example shows the color as border, it can be applied via the CSS property "border" or "border-color".

```
.border, #border, table{ border:4px solid rgb(207, 187, 187) }
```


If only the border color should be changed use the property `border-color`.

```
.border{ border-color:rgb(207, 187, 187) }
```

If you want to add a box shadow in that color use:

Here you see how a box with a 4 pixel `rgb(207, 187, 187)` colored shadow looks like.

```
.boxshadow{ -moz-box-shadow:4px 4px 4px  
4px rgb(207, 187, 187); -webkit-box-  
shadow:4px 4px 4px 4px rgb(207, 187, 187);  
box-shadow:4px 4px 4px 4px rgb(207, 187,  
187) }
```

Background

The CSS property to change the background color of an element to YIQ 192.9800, 11.9200, 4.2400 is called "background". The background property can be set on classes, ids or directly on the HTML element.

```
.background, #background, body{  
background: rgb(207, 187, 187) }
```

If only the background color should be changed can be used:

```
.background{ background-color: rgb(207,  
187, 187) }
```

This example shows the color as background, it is applied via the CSS property "background".

To optimize and compress your CSS code, you can use our [online CSS compressor and optimizer](#) based on csstidy. If you want to create a linear or radial gradient as background or border, check our [CSS Gradient Generator](#).

Hey! You found this booklet interesting? Support Converting Colors with the new Membership Option!

The pro membership hides all ads, plus gives you double the colors in the color bucket, and more awesome pro features!

[Learn more, Memberships starting at \\$2.50/m!](#)

**Follow me
on Twitter!**

@ConvertingColor