

Converting Colors

YIQ(194.3120, 16.9170, 7.2930)

Have a look what the booklet for
YIQ(194.3120, 16.9170, 7.2930)
contains.

YIQ(194.3120, 16.9170, 7.2930)	3
<i>Conversions</i>	4
<i>Details</i>	6
<i>Harmonies</i>	12
<i>Previews</i>	24
<i>Color Blindness Simulation</i>	28
<i>CSS Examples</i>	31

Color

**YIQ(194.3120, 16.9170,
7.2930)**

Conversions

Conversions Part 1

Format	Color
Hex	D7B9BC
RGB	215, 185, 188
RGB Percent	84%, 73%, 74%
CMY	0.1568, 0.2745, 0.2627
CMYK	0.00, 0.14, 0.13, 0.16
HSL	354°, 27%, 78%
HSV	354°, 14%, 84%
XYZ	54.4550, 52.7741, 54.9026
YIQ	194.3120, 16.9170, 7.2930

Conversions

Conversions Part 2

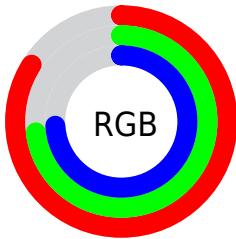
Format	Color
R _Y B	215, 185, 188
Decimal	14137788
CIE Lab	77.74, 11.22, 2.44
CIE LCh	78, 11.479, 12.253
Yxy	52.7741, 0.3359, 0.3255
Android (android.graphics.Color)	4292327868 (0xFFD7B9BC)
YUV	194.3120, -3.1118, 18.1434
Hunter-Lab	72.6458, 6.6728, 6.0432

Details

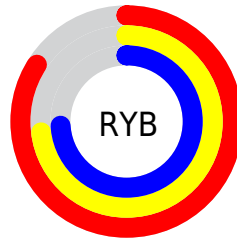
The YIQ color $194.3120, 16.9170, 7.2930$ is a light color, and the websafe version is hex FFCCCC . A complement of this color would be $205.6880, -16.9170, -7.2930$, and the grayscale version is $194.0000, -0.0000, 0.0000$.

A 20% lighter version of the original color is $245.5280, 7.3810, 3.9010$, and $140.7140, 15.7250, 6.8690$ is the 20% darker color. If you saturate the color by 10%, you get $179.2320, 29.0660, 12.8900$, and if you desaturate by 10%, it is $208.8050, 5.0430, 2.2190$.

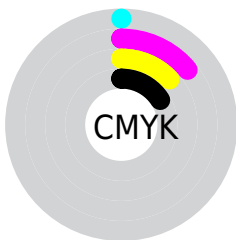
Distribution



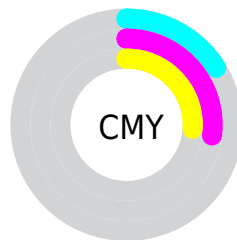
- Red (84%)
- Green (73%)
- Blue (74%)



- Red (84%)
- Yellow (73%)
- Blue (74%)



- Cyan (0%)
- Magenta (14%)
- Yellow (13%)
- Black (16%)



- Cyan (16%)
- Magenta (27%)
- Yellow (26%)

Brightness & Saturation Gradients

These gradients show how the YIQ color 194.3120, 16.9170, 7.2930 changes by changing the brightness by 10 percent. The first figure shows a shift by +10% for each color and the second figure -10%.

Similar to the brightness gradients but the following saturation gradients show a change of the YIQ color 194.3120, 16.9170, 7.2930 by changing the saturation by 10% instead.

■ 194.3120, 16.9170,
7.2930

■ 194.3120, 16.9170,
7.2930

255.0000, -0.0000,
-0.0000

■ 167.0130, 16.3210,
7.0810

■ 245.5280, 7.3810,
3.9010

■ 140.7140, 15.7250,
6.8690

■ 115.4150, 15.1290,
6.6570

■ 90.1160, 14.5330,
6.4450

■ 66.8170, 13.9370,
6.2330

■ 44.2190, 12.7450,
5.8090

■ 23.6210, 11.5530,

5.3850

■ 1.1960, 2.3840,
0.8480

■ 0.0000, 0.0000,
0.0000

■ 194.3120, 16.9170,
7.2930

■ 194.3120, 16.9170,
7.2930

■ 179.2320, 29.0660,
12.8900

■ 208.8050, 5.0430,
2.2190

■ 164.6250, 41.2610,
17.6530

■ 223.9990, -7.4270,
-3.0670

■ 149.5450, 53.4100,
23.2500

■ 238.4920,
-19.3010, -8.1410

■ 135.0520, 65.2840,
28.3240

■ 243.0400,
-23.8400, -8.4800

■ 119.8580, 77.7540,
33.6100

■ 105.3650, 89.6280,
38.6840

■ 90.2850, 101.7770,
44.2810

■ 75.6780, 113.9720,
49.0440

■ 66.7930, 121.0780,
52.4220

Harmonies

Analogous

The Analogous color harmony consists of three colors that are next to each other on the color wheel.



194.6580, 10.1310, 9.1310



194.3120, 16.9170, 7.2930



193.4600, 19.2560, 3.4480

Triad

The Triadic color harmony groups three colors that are evenly spaced from another and form a triangle on the color wheel.



194.3120, 16.9170, 7.2930



190.1320, -0.7320, -8.7640



190.6590, -17.9730, 0.8350

Complementary

The Complementary color scheme is a pair of colors which are on the opposite of each other on the color wheel.



194.3120, 16.9170, 7.2930



205.6880, -16.9170, -7.2930

Split Complementary

Split-complementary colors differ from the complementary color scheme. The scheme consists of three colors, the original color and two neighbors of the complement color.



189.0560, -20.7690, -3.5610



194.3120, 16.9170, 7.2930



189.0430, -10.7270, -9.3430

Square

The Square scheme is like the rectangle color scheme, but the four colors are evenly spaced on the color wheel.



194.3120, 16.9170, 7.2930



191.3890, 8.8500, -6.2060



188.7910, -18.7050, -7.9290



192.6000, -10.3170, 5.2590

Rectangle

The Rectangle color scheme consists of four colors that form a rectangle on the color wheel.



194.3120, 16.9170, 7.2930



192.9820, 17.6060, 0.3100



188.7910, -18.7050, -7.9290



190.2350, -19.7150, -0.6350

Sweetspot

The Sweet Spot groups the original color and five complimentary colors.



194.3120, 16.9170, 7.2930



248.1040, 5.6390, 2.4310



196.4930, 6.4620, 15.0540



123.2070, 3.8510, 1.7950



0.0000, 0.0000, 0.0000



128.0000, -0.0000, -0.0000

Same Dimension

The Same Dimension uses a secret algorithm to generate beautiful new colors.



194.3120, 16.9170, 7.2930



225.3130, 24.3440, 10.3600



201.0140, 14.5800, 0.0840



99.4030, 6.2350, 2.6430



53.0670, 96.4590, 41.5390



13.3130, 24.3440, 10.3600

Inverse Universe

The Inverse Universe completely reimagines the original color for something new.



194.3120, 16.9170, 7.2930



225.3130, 24.3440, 10.3600



199.5730, -14.8550, -0.6070



99.4030, 6.2350, 2.6430



53.0670, 96.4590, 41.5390



13.3130, 24.3440, 10.3600

Previews

White Background



This preview shows how the YIQ color 194.3120, 16.9170, 7.2930 looks on a white background.

Color Contrast Check

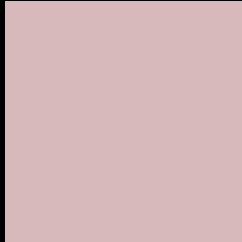
Large Text (above 18pt) WCAG AA × Fail

Any Text WCAG AA × Fail

Large Text (above 18pt) WCAG AAA × Fail

Any Text WCAG AAA × Fail

Black Background



This preview shows how the YIQ color 194.3120, 16.9170, 7.2930 looks on a black background.

Color Contrast Check

Large Text (above 18pt) WCAG AA ✓ Pass

Any Text WCAG AA ✓ Pass

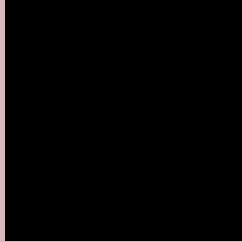
Large Text (above 18pt) WCAG AAA ✓ Pass

Any Text WCAG AAA ✓ Pass

If you want to check with other color combinations, try the [Color Contrast Checker](#).

YIQ 194.3120, 16.9170, 7.2930

Background



This preview shows how black text looks on a background with the YIQ color 194.3120, 16.9170, 7.2930.



This preview shows how white text looks on a background with the YIQ color 194.3120, 16.9170,

7.2930.

Color Blindness Simulation

Color vision deficiency is a very complex topic, and I could not describe the different causes any better than Wikipedia does, so if you want to learn more, you should check out their [article about color blindness](#).

Dichromacy



Original Color

194.3120, 16.9170, 7.2930

Protanopia

192.6090, 2.6590, 1.3710

Deuteranopia

194.0020, 14.8540, 6.1340



Tritanopia

194.5770, 14.8530, 11.6610

Trichromacy



Original Color

194.3120, 16.9170, 7.2930

Protanomaly

193.4140, 7.7020, 3.5900

Deuteranomaly

194.3010, 15.4500, 6.3460

Tritanomaly

194.7080, 15.8620, 9.8940

Monochromacy



Original Color

194.3120, 16.9170, 7.2930

Achromatopsia

194.0000, -0.0000, 0.0000

Achromatomaly

194.4030, 6.2350, 2.6430

CSS Examples

Text

The CSS property to change the color of the text to YIQ 194.3120, 16.9170, 7.2930 is called "color". The color property can be set on classes, ids or directly on the HTML element.

This example shows how text in the color `rgb(215, 185, 188)` looks like.

```
.text, #text, p{  
    color:rgb(215, 185, 188)  
}
```

If you want to add a text shadow in that color use the text-shadow property, you can generate a text shadow directly with our [CSS Text Shadow Generator](#).

Here you see how black text with a 4 pixel rgb(215, 185, 188) colored shadow looks like.

```
.shadow{ text-shadow: 4px 4px 2px rgb(215, 185, 188) }
```

Border

The CSS property to change the border of an element to YIQ 194.3120, 16.9170, 7.2930 is called "border". The border property can be set on classes, ids or directly on the HTML element.

This example shows the color as border, it can be applied via the CSS property "border" or "border-color".

```
.border, #border, table{ border:4px solid rgb(215, 185, 188) }
```


If only the border color should be changed use the property `border-color`.

```
.border{ border-color:rgb(215, 185, 188) }
```

If you want to add a box shadow in that color use:

Here you see how a box with a 4 pixel `rgb(215, 185, 188)` colored shadow looks like.

```
.boxshadow{ -moz-box-shadow:4px 4px 4px  
4px rgb(215, 185, 188); -webkit-box-  
shadow:4px 4px 4px 4px rgb(215, 185, 188);  
box-shadow:4px 4px 4px 4px rgb(215, 185,  
188) }
```

Background

The CSS property to change the background color of an element to YIQ 194.3120, 16.9170, 7.2930 is called "background". The background property can be set on classes, ids or directly on the HTML element.

```
.background, #background, body{  
background: rgb(215, 185, 188) }
```

If only the background color should be changed can be used:

```
.background{ background-color: rgb(215,  
185, 188) }
```

This example shows the color as background, it is applied via the CSS property "background".

To optimize and compress your CSS code, you can use our [online CSS compressor and optimizer](#) based on csstidy. If you want to create a linear or radial gradient as background or border, check our [CSS Gradient Generator](#).

Hey! You found this booklet interesting? Support Converting Colors with the new Membership Option!

The pro membership hides all ads, plus gives you double the colors in the color bucket, and more awesome pro features!

[Learn more, Memberships starting at \\$2.50/m!](#)

**Follow me
on Twitter!**

@ConvertingColor