

Converting Colors

YIQ(194.3900, 25.4450, 6.9250)

Have a look what the booklet for
YIQ(194.3900, 25.4450, 6.9250)
contains.

YIQ(194.3900, 25.4450, 6.9250)	3
<i>Conversions</i>	4
<i>Details</i>	6
<i>Harmonies</i>	12
<i>Previews</i>	24
<i>Color Blindness Simulation</i>	28
<i>CSS Examples</i>	31

Color

**YIQ(194.3900, 25.4450,
6.9250)**

Conversions

Conversions Part 1

Format	Color
Hex	DFB7B2
RGB	223, 183, 178
RGB Percent	87%, 72%, 70%
CMY	0.1254, 0.2824, 0.3019
CMYK	0.00, 0.18, 0.20, 0.13
HSL	7°, 41%, 79%
HSV	7°, 20%, 87%
XYZ	55.4072, 52.7672, 49.3984
YIQ	194.3900, 25.4450, 6.9250

Conversions

Conversions Part 2

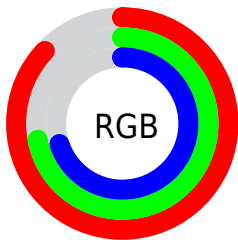
Format	Color
R _Y B	223, 184, 178
Decimal	14661554
CIE _{Lab}	77.74, 13.64, 7.94
CIE _{LCh}	78, 15.783, 30.192
Yxy	52.7672, 0.3516, 0.3349
Android (android.graphics.Color)	4292851634 (0xFFDFB7B2)
YUV	194.3900, -8.0803, 25.0910
Hunter-Lab	72.6410, 9.0299, 10.5295

Details

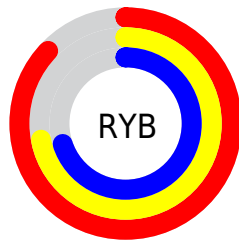
The YIQ color $194.3900, 25.4450, 6.9250$ is a light color, and the websafe version is hex `FFCCCC`. A complement of this color would be $206.6100, -25.4450, -6.9250$, and the grayscale version is $194.0000, -0.0000, 0.0000$.

A 20% lighter version of the original color is $243.2140, 11.1410, 1.8370$, and $140.4930, 23.6570, 6.2890$ is the 20% darker color. If you saturate the color by 10%, you get $180.1420, 38.0070, 10.5430$, and if you desaturate by 10%, it is $208.6380, 12.8830, 3.3070$.

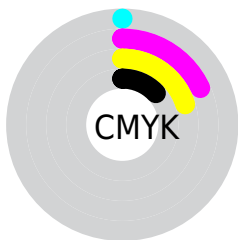
Distribution



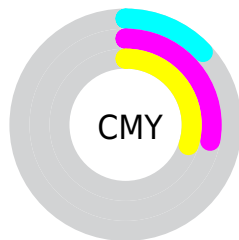
- Red (87%)
- Green (72%)
- Blue (70%)



- Red (87%)
- Yellow (72%)
- Blue (70%)



- Cyan (0%)
- Magenta (18%)
- Yellow (20%)
- Black (13%)




- Cyan (13%)
- Magenta (28%)
- Yellow (30%)

Brightness & Saturation Gradients


These gradients show how the YIQ color 194.3900, 25.4450, 6.9250 changes by changing the brightness by 10 percent. The first figure shows a shift by +10% for each color and the second figure -10%.


Similar to the brightness gradients but the following saturation gradients show a change of the YIQ color 194.3900, 25.4450, 6.9250 by changing the saturation by 10% instead.


 194.3900, 25.4450,
6.9250


 194.3900, 25.4450,
6.9250


255.0000, -0.0000,
-0.0000


 167.0910, 24.8490,
6.7130


 243.2140, 11.1410,
1.8370

 140.4930, 23.6570,
6.2890

 114.8950, 22.4650,
5.8650

 89.8240, 21.2270,
6.2750

 66.2260, 20.0350,
5.8510

 43.7420, 18.5220,
5.7380

 22.5030, 17.6970,

4.1690

■ 2.9900, 5.9600,
2.1200

■ 0.0000, 0.0000,
0.0000

■ 194.3900, 25.4450,
6.9250

■ 194.3900, 25.4450,
6.9250

■ 180.1420, 38.0070,
10.5430

■ 208.6380, 12.8830,
3.3070

■ 165.7800, 50.8900,
13.8500

■ 223.0000, -0.0000,
-0.0000

■ 151.5320, 63.4520,
17.4680

■ 237.2480,
-12.5620, -3.6180

■ 137.8710, 75.7390,
20.5630

■ 245.4320,
-19.0720, -6.7840

■ 123.6230, 88.3010,
24.1810

■ 109.2610,
101.1840, 27.4880

■ 95.0130, 113.7460,
31.1060

■ 81.3520, 126.0330,
34.2010

Harmonies

Analogous

The Analogous color harmony consists of three colors that are next to each other on the color wheel.



194.9150, 19.7130, 11.6890



194.3900, 25.4450, 6.9250



193.1030, 24.5750, 0.6630

Triad

The Triadic color harmony groups three colors that are evenly spaced from another and form a triangle on the color wheel.



194.3900, 25.4450, 6.9250



188.1200, -9.6260, -12.7780



191.1090, -19.1200, 5.1040

Complementary

The Complementary color scheme is a pair of colors which are on the opposite of each other on the color wheel.



194.3900, 25.4450, 6.9250



206.6100, -25.4450, -6.9250

Split Complementary

Split-complementary colors differ from the complementary color scheme. The scheme consists of three colors, the original color and two neighbors of the complement color.



189.1030, -28.1510, -1.9350



194.3900, 25.4450, 6.9250



187.1170, -22.7390, -11.9150

Square

The Square scheme is like the rectangle color scheme, but the four colors are evenly spaced on the color wheel.



194.3900, 25.4450, 6.9250



190.3020, 4.5410, -10.7150



186.9300, -29.3420, -7.8860



193.3990, -5.1370, 10.5030

Rectangle

The Rectangle color scheme consists of four colors that form a rectangle on the color wheel.



194.3900, 25.4450, 6.9250



192.1300, 19.9450, -3.5350



186.9300, -29.3420, -7.8860



190.4890, -23.2460, 2.7860

Sweetspot

The Sweet Spot groups the original color and five complimentary colors.



194.3900, 25.4450, 6.9250



245.0720, 8.6650, 2.6570



196.1290, 13.6590, 22.2910



122.2780, 5.0890, 1.3850



0.0000, 0.0000, 0.0000



128.0000, -0.0000, -0.0000

Same Dimension

The Same Dimension uses a secret algorithm to generate beautiful new colors.



194.3900, 25.4450, 6.9250



216.3480, 34.4310, 9.2710



207.3040, 19.3950, -4.5810



104.8760, 6.2810, 1.8090



63.7770, 99.6710, 27.3750



17.2870, 27.2330, 7.5610

Inverse Universe

The Inverse Universe completely reimagines the original color for something new.



206.6100, -25.4450, -6.9250



232.6520, -34.4310, -9.2710



193.6960, -19.3950, 4.5810



108.1240, -6.2810, -1.8090



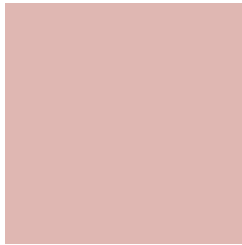
112.2230, -99.6710, -27.3750



30.7130, -27.2330, -7.5610

Previews

White Background



This preview shows how the YIQ color 194.3900, 25.4450, 6.9250 looks on a white background.

Color Contrast Check

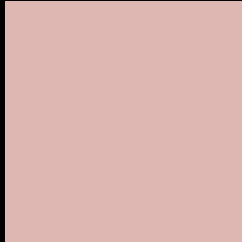
Large Text (above 18pt) WCAG AA × Fail

Any Text WCAG AA × Fail

Large Text (above 18pt) WCAG AAA × Fail

Any Text WCAG AAA × Fail

Black Background



This preview shows how the YIQ color 194.3900, 25.4450, 6.9250 looks on a black background.

Color Contrast Check

Large Text (above 18pt) WCAG AA ✓ Pass

Any Text WCAG AA ✓ Pass

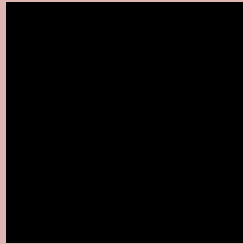
Large Text (above 18pt) WCAG AAA ✓ Pass

Any Text WCAG AAA ✓ Pass

If you want to check with other color combinations, try the [Color Contrast Checker](#).

YIQ 194.3900, 25.4450, 6.9250

Background



This preview shows how black text looks on a background with the YIQ color 194.3900, 25.4450, 6.9250.



This preview shows how white text looks on a background with the YIQ color 194.3900, 25.4450,

6.9250.

Color Blindness Simulation

Color vision deficiency is a very complex topic, and I could not describe the different causes any better than Wikipedia does, so if you want to learn more, you should check out their [article about color blindness](#).

Dichromacy



Original Color

194.3900, 25.4450, 6.9250

Protanopia

192.7680, 6.4650, -1.5270

Deuteranopia

194.0580, 20.4480, 3.8720



Tritanopia

195.0510, 22.3260, 13.8940

Trichromacy



Original Color

194.3900, 25.4450, 6.9250

Protanomaly

193.4700, 13.2960, 1.3280

Deuteranomaly

194.3680, 22.5110, 5.0310

Tritanomaly

194.6550, 23.3810, 11.2930

Monochromacy



Original Color

194.3900, 25.4450, 6.9250

Achromatopsia

194.0000, -0.0000, 0.0000

Achromatomaly

194.2570, 9.5820, 2.5580

CSS Examples

Text

The CSS property to change the color of the text to YIQ 194.3900, 25.4450, 6.9250 is called "color". The color property can be set on classes, ids or directly on the HTML element.

This example shows how text in the color `rgb(223, 183, 178)` looks like.

```
.text, #text, p{  
    color:rgb(223, 183, 178)  
}
```

If you want to add a text shadow in that color use the text-shadow property, you can generate a text shadow directly with our [CSS Text Shadow Generator](#).

Here you see how black text with a 4 pixel rgb(223, 183, 178) colored shadow looks like.

```
.shadow{ text-shadow: 4px 4px 2px rgb(223, 183, 178) }
```

Border

The CSS property to change the border of an element to YIQ 194.3900, 25.4450, 6.9250 is called "border". The border property can be set on classes, ids or directly on the HTML element.

This example shows the color as border, it can be applied via the CSS property "border" or "border-color".

```
.border, #border, table{ border:4px solid rgb(223, 183, 178) }
```


If only the border color should be changed use the property `border-color`.

```
.border{ border-color:rgb(223, 183, 178) }
```

If you want to add a box shadow in that color use:

Here you see how a box with a 4 pixel `rgb(223, 183, 178)` colored shadow looks like.

```
.boxshadow{ -moz-box-shadow:4px 4px 4px  
4px rgb(223, 183, 178); -webkit-box-  
shadow:4px 4px 4px 4px rgb(223, 183, 178);  
box-shadow:4px 4px 4px 4px rgb(223, 183,  
178) }
```

Background

The CSS property to change the background color of an element to YIQ 194.3900, 25.4450, 6.9250 is called "background". The background property can be set on classes, ids or directly on the HTML element.

```
.background, #background, body{  
background: rgb(223, 183, 178) }
```

If only the background color should be changed can be used:

```
.background{ background-color: rgb(223,  
183, 178) }
```

This example shows the color as background, it is applied via the CSS property "background".

To optimize and compress your CSS code, you can use our [online CSS compressor and optimizer](#) based on csstidy. If you want to create a linear or radial gradient as background or border, check our [CSS Gradient Generator](#).

Hey! You found this booklet interesting? Support Converting Colors with the new Membership Option!

The pro membership hides all ads, plus gives you double the colors in the color bucket, and more awesome pro features!

[Learn more, Memberships starting at \\$2.50/m!](#)

**Follow me
on Twitter!**

@ConvertingColor