

# Converting Colors

YIQ(194.4510, 23.4750, -1.4290)

Have a look what the booklet for  
YIQ(194.4510, 23.4750, -1.4290)  
contains.

<b>YIQ(194.4510, 23.4750, -1.4290)</b> .....	3
<b><i>Conversions</i></b> .....	4
<b><i>Details</i></b> .....	6
<b><i>Harmonies</i></b> .....	12
<b><i>Previews</i></b> .....	24
<b><i>Color Blindness Simulation</i></b> .....	28
<b><i>CSS Examples</i></b> .....	31

# Color

**YIQ(194.4510, 23.4750,  
-1.4290)**

# Conversions

## Conversions Part 1

Format	Color
Hex	D8BDA6
RGB	216, 189, 166
RGB Percent	85%, 74%, 65%
CMY	0.1529, 0.2588, 0.3489
CMYK	0.00, 0.13, 0.23, 0.15
HSL	28°, 39%, 75%
HSV	28°, 23%, 85%
XYZ	53.4033, 53.7454, 43.6492
YIQ	194.4510, 23.4750, -1.4290

# Conversions

## Conversions Part 2

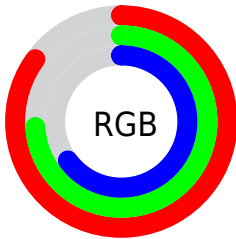
<b>Format</b>	<b>Color</b>
R <sub>Y</sub> B	216, 209, 166
Decimal	14204326
CIE Lab	78.31, 6.06, 15.14
CIE LCh	78, 16.308, 68.174
Yxy	53.7454, 0.3541, 0.3564
Android (android.graphics.Color)	4292394406 (0xFFD8BDA6)
YUV	194.4510, -14.0263, 18.8985
Hunter-Lab	73.3112, 1.7331, 16.0168

# Details

The YIQ color  $194.4510, 23.4750, -1.4290$  is a light color, and the websafe version is hex  $\text{FFCCCC}$ . A complement of this color would be  $187.5490, -23.4750, 1.4290$ , and the grayscale version is  $195.0000, -0.0000, 0.0000$ .

A 20% lighter version of the original color is  $245.2540, 13.6640, -5.3440$ , and  $140.9670, 21.9620, -1.5420$  is the 20% darker color. If you saturate the color by 10%, you get  $184.8990, 33.8370, -1.9950$ , and if you desaturate by 10%, it is  $204.0030, 13.1130, -0.8630$ .

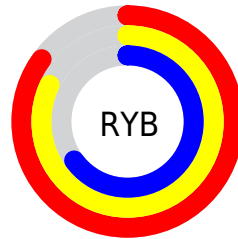
# Distribution



Red (85%)

Green (74%)

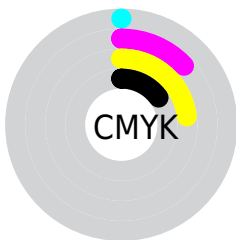
Blue (65%)



Red (85%)

Yellow (82%)

Blue (65%)

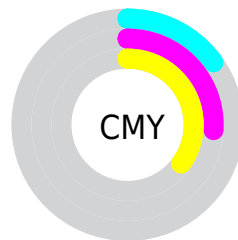


Cyan (0%)

Magenta (13%)

Yellow (23%)

Black (15%)



Cyan (15%)

Magenta (26%)


Yellow (35%)


# Brightness & Saturation Gradients

These gradients show how the YIQ color 194.4510, 23.4750, -1.4290 changes by changing the brightness by 10 percent. The first figure shows a shift by +10% for each color and the second figure -10%.


Similar to the brightness gradients but the following saturation gradients show a change of the YIQ color 194.4510, 23.4750, -1.4290 by changing the saturation by 10% instead.





 194.4510, 23.4750,  
-1.4290


 194.4510, 23.4750,  
-1.4290


255.0000, -0.0000,  
-0.0000


 167.2660, 22.5580,  
-1.3300


 245.2540, 13.6640,  
-5.3440


 140.9670, 21.9620,  
-1.5420

 254.4300, 1.6050,  
-1.5550

 114.8960, 20.7240,  
-1.1320

 90.2980, 19.5320,  
-1.5560

 66.8140, 18.0190,  
-1.6690

 44.3300, 16.5060,  
-1.7820

 23.1020, 17.1480,

-2.4040

■ 0.0000, 0.0000,  
0.0000

■ 194.4510, 23.4750,  
-1.4290

■ 194.4510, 23.4750,  
-1.4290

■ 184.8990, 33.8370,  
-1.9950

■ 204.0030, 13.1130,  
-0.8630

■ 176.0480, 43.6030,  
-2.7730

■ 212.8540, 3.3470,  
-0.0850

■ 166.4960, 53.9650,  
-3.3390

■ 222.4060, -7.0150,  
0.4810

■ 157.0580, 64.0060,  
-3.5940

■ 231.8440,  
-17.0560, 0.7360

■ 148.0930, 74.0930,  
-4.6830

■ 238.6430,  
-21.0440, -4.0840

■ 138.5410, 84.4550,  
-5.2490

■ 243.3390,  
-23.2440, -8.2680

■ 129.1030, 94.4960,  
-5.5040

■ 122.6970,  
101.5110, -5.9850

# Harmonies

## Analogous

The Analogous color harmony consists of three colors that are next to each other on the color wheel.



195.9340, 26.7290, 5.6810



194.4510, 23.4750, -1.4290



192.9720, 14.3980, -7.6340

# Triad

The Triadic color harmony groups three colors that are evenly spaced from another and form a triangle on the color wheel.



194.4510, 23.4750, -1.4290



188.5620, -25.4900, -11.6180



196.1930, -1.5610, 11.7750

# Complementary

The Complementary color scheme is a pair of colors which are on the opposite of each other on the color wheel.



194.4510, 23.4750, -1.4290



187.5490, -23.4750, 1.4290

# Split Complementary

Split-complementary colors differ from the complementary color scheme. The scheme consists of three colors, the original color and two neighbors of the complement color.



193.7180, -16.4610, 6.4750



194.4510, 23.4750, -1.4290



189.0870, -31.2220, -6.8540

# Square

The Square scheme is like the rectangle color scheme, but the four colors are evenly spaced on the color wheel.



194.4510, 23.4750, -1.4290



189.5540, -13.8440, -13.4280



190.7550, -27.0510, 0.1570



196.8480, 12.6520, 13.0040



# Rectangle

The Rectangle color scheme consists of four colors that form a rectangle on the color wheel.



194.4510, 23.4750, -1.4290



191.4870, 5.4580, -10.8140



190.7550, -27.0510, 0.1570



195.2140, -6.0540, 10.6020

# Sweetspot

The Sweet Spot groups the original color and five complimentary colors.



194.4510, 23.4750, -1.4290



247.0780, 8.5280, -0.3680



184.1420, 20.8120, 19.3080



123.2240, 5.1810, -0.2830



0.0000, 0.0000, 0.0000



128.0000, -0.0000, -0.0000



# Same Dimension

The Same Dimension uses a secret algorithm to generate beautiful new colors.



194.4510, 23.4750, -1.4290



224.0130, 33.5160, -1.6840



209.1260, 16.6000, -14.5040



102.2240, 5.1810, -0.2830



96.9150, 80.4660, -4.5420



24.5970, 20.1280, -1.3440



# Inverse Universe

The Inverse Universe completely reimagines the original color for something new.



187.5490, -23.4750, 1.4290



214.4000, -33.2410, 2.2070



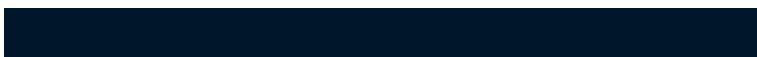
173.4610, -16.8750, 13.9810



100.7760, -5.1810, 0.2830



73.4980, -80.1910, 5.0650

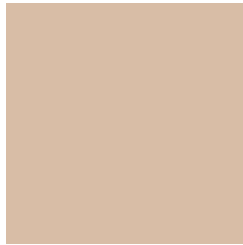


18.4030, -20.1280, 1.3440



# Previews

## White Background



This preview shows how the YIQ color 194.4510, 23.4750, -1.4290 looks on a white background.

## Color Contrast Check

Large Text (above 18pt) WCAG AA × Fail

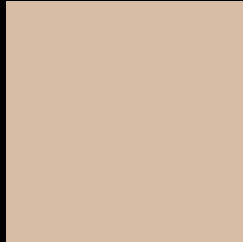
Any Text WCAG AA × Fail

Large Text (above 18pt) WCAG AAA × Fail

Any Text WCAG AAA × Fail



# Black Background



This preview shows how the YIQ color 194.4510, 23.4750, -1.4290 looks on a black background.

## Color Contrast Check

Large Text (above 18pt) WCAG AA ✓ Pass

Any Text WCAG AA ✓ Pass

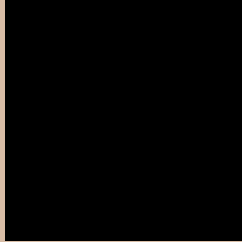
Large Text (above 18pt) WCAG AAA ✓ Pass

Any Text WCAG AAA ✓ Pass

If you want to check with other color combinations, try the [Color Contrast Checker](#).

# YIQ 194.4510, 23.4750, -1.4290

## Background



This preview shows how black text looks on a background with the YIQ color 194.4510, 23.4750, -1.4290.



This preview shows how white text looks on a background with the YIQ color 194.4510, 23.4750, -1.4290.

-1.4290.

# Color Blindness Simulation

Color vision deficiency is a very complex topic, and I could not describe the different causes any better than Wikipedia does, so if you want to learn more, you should check out their [article about color blindness](#).

## Dichromacy



### Original Color

194.4510, 23.4750, -1.4290

### Protanopia

193.1400, 13.9850, -5.6550

### Deuteranopia

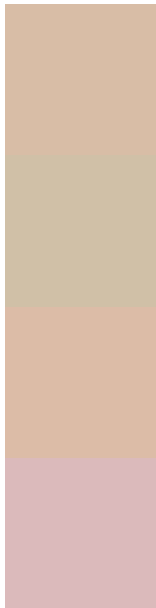
195.1850, 27.2800, 1.2000



## Tritanopia

196.4740, 16.6410, 12.2970

# Trichromacy



**Original Color**

194.4510, 23.4750, -1.4290

**Protanomaly**

193.9340, 17.5610, -4.3830

**Deuteranomaly**

195.1740, 25.8130, 0.2530

**Tritanomaly**

195.9810, 19.3470, 7.3070

# Monochromacy



**Original Color**

194.4510, 23.4750, -1.4290

**Achromatopsia**

194.0000, -0.0000, 0.0000

**Achromatomaly**

194.0780, 8.5280, -0.3680

# CSS Examples

## Text

The CSS property to change the color of the text to YIQ 194.4510, 23.4750, -1.4290 is called "color". The color property can be set on classes, ids or directly on the HTML element.

This example shows how text in the color `rgb(216, 189, 166)` looks like.

```
.text, #text, p{  
    color:rgb(216, 189, 166)  
}
```

If you want to add a text shadow in that color use the text-shadow property, you can generate a text shadow directly with our [CSS Text Shadow Generator](#).

Here you see how black text with a 4 pixel rgb(216, 189, 166) colored shadow looks like.

```
.shadow{ text-shadow: 4px 4px 2px rgb(216, 189, 166) }
```

## Border

The CSS property to change the border of an element to YIQ 194.4510, 23.4750, -1.4290 is called "border". The border property can be set on classes, ids or directly on the HTML element.

This example shows the color as border, it can be applied via the CSS property "border" or "border-color".

```
.border, #border, table{ border:4px solid rgb(216, 189, 166) }
```



If only the border color should be changed use the property `border-color`.

```
.border{ border-color:rgb(216, 189, 166) }
```

If you want to add a box shadow in that color use:

Here you see how a box with a 4 pixel `rgb(216, 189, 166)` colored shadow looks like.

```
.boxshadow{ -moz-box-shadow:4px 4px 4px  
4px rgb(216, 189, 166); -webkit-box-  
shadow:4px 4px 4px 4px rgb(216, 189, 166);  
box-shadow:4px 4px 4px 4px rgb(216, 189,  
166) }
```

# Background

The CSS property to change the background color of an element to YIQ 194.4510, 23.4750, -1.4290 is called "background". The background property can be set on classes, ids or directly on the HTML element.

```
.background, #background, body{  
background: rgb(216, 189, 166) }
```

If only the background color should be changed can be used:

```
.background{ background-color: rgb(216,  
189, 166) }
```

This example shows the color as background, it is applied via the CSS property "background".

To optimize and compress your CSS code, you can use our [online CSS compressor and optimizer](#) based on csstidy. If you want to create a linear or radial gradient as background or border, check our [CSS Gradient Generator](#).

Hey! You found this booklet interesting? Support Converting Colors with the new Membership Option!

The pro membership hides all ads, plus gives you double the colors in the color bucket, and more awesome pro features!

**[Learn more, Memberships starting at \\$2.50/m!](#)**

**Follow me  
on Twitter!**

@ConvertingColor