

Converting Colors

YIQ(194.9130, 31.2220, 6.8540)

Have a look what the booklet for
YIQ(194.9130, 31.2220, 6.8540)
contains.

YIQ(194.9130, 31.2220, 6.8540)	3
<i>Conversions</i>	4
<i>Details</i>	6
<i>Harmonies</i>	12
<i>Previews</i>	24
<i>Color Blindness Simulation</i>	28
<i>CSS Examples</i>	31

Color

**YIQ(194.9130, 31.2220,
6.8540)**

Conversions

Conversions Part 1

Format	Color
Hex	E5B6AC
RGB	229, 182, 172
RGB Percent	90%, 71%, 67%
CMY	0.1019, 0.2863, 0.3254
CMYK	0.00, 0.21, 0.25, 0.10
HSL	10°, 52%, 79%
HSV	10°, 25%, 90%
XYZ	56.4952, 53.0901, 46.3164
YIQ	194.9130, 31.2220, 6.8540

Conversions

Conversions Part 2

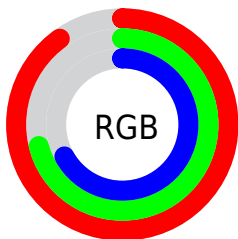
Format	Color
R _Y B	229, 184, 172
Decimal	15054508
CIE Lab	77.93, 15.54, 11.53
CIE LCh	78, 19.347, 36.584
Yxy	53.0901, 0.3624, 0.3405
Android (android.graphics.Color)	4293244588 (0xFFE5B6AC)
YUV	194.9130, -11.2961, 29.8943
Hunter-Lab	72.8629, 10.8921, 13.3155

Details

The YIQ color **194.9130, 31.2220, 6.8540** is a light color, and the websafe version is hex **FFCCCC**. A complement of this color would be **206.0870, -31.2220, -6.8540**, and the grayscale version is **195.0000, -0.0000, 0.0000**.

A 20% lighter version of the original color is **241.8290, 13.6630, 0.1830**, and **141.1300, 29.1130, 6.5290** is the 20% darker color. If you saturate the color by 10%, you get **181.1380, 43.8300, 9.6380**, and if you desaturate by 10%, it is **208.6880, 18.6140, 4.0700**.

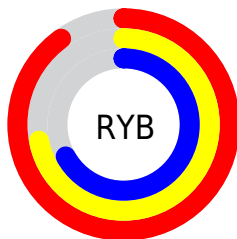
Distribution



Red (90%)

Green (71%)

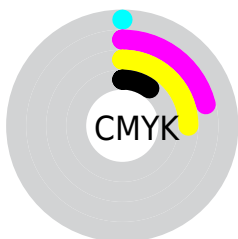
Blue (67%)



Red (90%)

Yellow (72%)

Blue (67%)

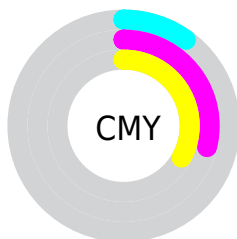


Cyan (0%)

Magenta (21%)

Yellow (25%)

Black (10%)



Cyan (10%)

Magenta (29%)

Yellow (33%)

Brightness & Saturation Gradients

These gradients show how the YIQ color 194.9130, 31.2220, 6.8540 changes by changing the brightness by 10 percent. The first figure shows a shift by +10% for each color and the second figure -10%.

Similar to the brightness gradients but the following saturation gradients show a change of the YIQ color 194.9130, 31.2220, 6.8540 by changing the saturation by 10% instead.

194.9130, 31.2220,
6.8540

194.9130, 31.2220,
6.8540

255.0000, -0.0000,
-0.0000

167.6140, 30.6260,
6.6420

241.8290, 13.6630,
0.1830

141.1300, 29.1130,
6.5290

115.2330, 27.3250,
5.8930

90.0480, 26.4080,
5.9920

66.2650, 24.2990,
5.6670

43.7810, 22.7860,
5.5540

22.2000, 22.9240,

3.0520

■ 4.7840, 9.5360,
3.3920

■ 0.0000, 0.0000,
0.0000

■ 194.9130, 31.2220,
6.8540

■ 194.9130, 31.2220,
6.8540

■ 181.1380, 43.8300,
9.6380

■ 208.6880, 18.6140,
4.0700

■ 167.3630, 56.4380,
12.4220

■ 222.4630, 6.0060,
1.2860

■ 153.5880, 69.0460,
15.2060

■ 236.2380, -6.6020,
-1.4980

■ 139.8130, 81.6540,
17.9900

■ 247.2260,
-15.4960, -5.5120

■ 126.1520, 93.9410,
21.0850

■ 112.9640,
106.2740, 23.3460

■ 99.1890, 118.8820,
26.1300

■ 91.9510, 125.4840,
27.6280

Harmonies

Analogous

The Analogous color harmony consists of three colors that are next to each other on the color wheel.



195.6770, 26.3150, 13.1870



194.9130, 31.2220, 6.8540



193.4900, 27.7390, -1.6130

Triad

The Triadic color harmony groups three colors that are evenly spaced from another and form a triangle on the color wheel.



194.9130, 31.2220, 6.8540



187.6030, -15.5400, -15.7320



192.5050, -20.1750, 7.7050

Complementary

The Complementary color scheme is a pair of colors which are on the opposite of each other on the color wheel.



194.9130, 31.2220, 6.8540



206.0870, -31.2220, -6.8540

Split Complementary

Split-complementary colors differ from the complementary color scheme. The scheme consists of three colors, the original color and two neighbors of the complement color.



188.5200, -33.6990, -0.5070



194.9130, 31.2220, 6.8540



185.7570, -30.5330, -13.8370

Square

The Square scheme is like the rectangle color scheme, but the four colors are evenly spaced on the color wheel.



194.9130, 31.2220, 6.8540



189.3400, 1.3780, -13.9660



186.2110, -37.5030, -8.6630



195.0620, -2.5700, 13.5420

Rectangle

The Rectangle color scheme consists of four colors that form a rectangle on the color wheel.



194.9130, 31.2220, 6.8540



192.5060, 21.6420, -6.7580



186.2110, -37.5030, -8.6630



191.2870, -25.4930, 4.9630

Sweetspot

The Sweet Spot groups the original color and five complimentary colors.



194.9130, 31.2220, 6.8540



244.1430, 9.9030, 2.2470



194.5150, 18.5640, 27.0120



121.4630, 6.0060, 1.2860



0.0000, 0.0000, 0.0000



128.0000, -0.0000, -0.0000

Same Dimension

The Same Dimension uses a secret algorithm to generate beautiful new colors.



194.9130, 31.2220, 6.8540



209.3550, 41.7210, 9.3130



211.3490, 23.5220, -7.7900



107.7620, 6.6020, 1.4980



71.7180, 98.1590, 21.7350



20.5320, 27.9210, 6.1050

Inverse Universe

The Inverse Universe completely reimagines the original color for something new.



206.0870, -31.2220, -6.8540



224.6450, -41.7210, -9.3130



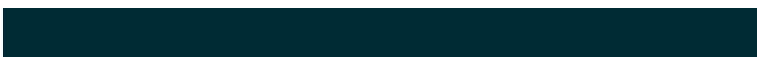
189.6510, -23.5220, 7.7900



110.2380, -6.6020, -1.4980



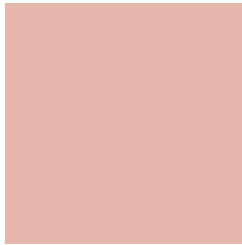
106.6950, -97.8840, -21.2120



30.4680, -27.9210, -6.1050

Previews

White Background



This preview shows how the YIQ color 194.9130, 31.2220, 6.8540 looks on a white background.

Color Contrast Check

Large Text (above 18pt) WCAG AA × Fail

Any Text WCAG AA × Fail

Large Text (above 18pt) WCAG AAA × Fail

Any Text WCAG AAA × Fail

Black Background



This preview shows how the YIQ color 194.9130, 31.2220, 6.8540 looks on a black background.

Color Contrast Check

Large Text (above 18pt) WCAG AA ✓ Pass

Any Text WCAG AA ✓ Pass

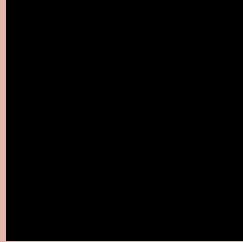
Large Text (above 18pt) WCAG AAA ✓ Pass

Any Text WCAG AAA ✓ Pass

If you want to check with other color combinations, try the [Color Contrast Checker](#).

YIQ 194.9130, 31.2220, 6.8540

Background



This preview shows how black text looks on a background with the YIQ color 194.9130, 31.2220, 6.8540.



This preview shows how white text looks on a background with the YIQ color 194.9130, 31.2220,

6.8540.

Color Blindness Simulation

Color vision deficiency is a very complex topic, and I could not describe the different causes any better than Wikipedia does, so if you want to learn more, you should check out their [article about color blindness](#).

Dichromacy



Original Color

194.9130, 31.2220, 6.8540

Protanopia

192.6820, 9.5830, -2.9690

Deuteranopia

194.1570, 24.4830, 2.3310



Tritanopia

196.1440, 26.4980, 15.3780

Trichromacy



Original Color

194.9130, 31.2220, 6.8540

Protanomaly

193.3950, 17.8810, 0.8330

Deuteranomaly

194.7660, 27.1420, 3.7020

Tritanomaly

195.5200, 28.1950, 12.1550

Monochromacy



Original Color

194.9130, 31.2220, 6.8540

Achromatopsia

195.0000, -0.0000, 0.0000

Achromatomaly

194.7410, 11.0950, 2.6710

CSS Examples

Text

The CSS property to change the color of the text to YIQ 194.9130, 31.2220, 6.8540 is called "color". The color property can be set on classes, ids or directly on the HTML element.

This example shows how text in the color `rgb(229, 182, 172)` looks like.

```
.text, #text, p{  
    color:rgb(229, 182, 172)  
}
```

If you want to add a text shadow in that color use the text-shadow property, you can generate a text shadow directly with our [CSS Text Shadow Generator](#).

Here you see how black text with a 4 pixel rgb(229, 182, 172) colored shadow looks like.

```
.shadow{ text-shadow: 4px 4px 2px rgb(229, 182, 172) }
```

Border

The CSS property to change the border of an element to YIQ 194.9130, 31.2220, 6.8540 is called "border". The border property can be set on classes, ids or directly on the HTML element.

This example shows the color as border, it can be applied via the CSS property "border" or "border-color".

```
.border, #border, table{ border:4px solid rgb(229, 182, 172) }
```


If only the border color should be changed use the property `border-color`.

```
.border{ border-color:rgb(229, 182, 172) }
```

If you want to add a box shadow in that color use:

Here you see how a box with a 4 pixel `rgb(229, 182, 172)` colored shadow looks like.

```
.boxshadow{ -moz-box-shadow:4px 4px 4px  
4px rgb(229, 182, 172); -webkit-box-  
shadow:4px 4px 4px 4px rgb(229, 182, 172);  
box-shadow:4px 4px 4px 4px rgb(229, 182,  
172) }
```

Background

The CSS property to change the background color of an element to YIQ 194.9130, 31.2220, 6.8540 is called "background". The background property can be set on classes, ids or directly on the HTML element.

```
.background, #background, body{  
background: rgb(229, 182, 172) }
```

If only the background color should be changed can be used:

```
.background{ background-color: rgb(229,  
182, 172) }
```

This example shows the color as background, it is applied via the CSS property "background".

To optimize and compress your CSS code, you can use our [online CSS compressor and optimizer](#) based on csstidy. If you want to create a linear or radial gradient as background or border, check our [CSS Gradient Generator](#).

Hey! You found this booklet interesting? Support Converting Colors with the new Membership Option!

The pro membership hides all ads, plus gives you double the colors in the color bucket, and more awesome pro features!

[Learn more, Memberships starting at \\$2.50/m!](#)

**Follow me
on Twitter!**

@ConvertingColor