

Converting Colors

YIQ(195.3650, 26.5930, -2.8710)

Have a look what the booklet for
YIQ(195.3650, 26.5930, -2.8710)
contains.

YIQ(195.3650, 26.5930, -2.8710)	3
<i>Conversions</i>	4
<i>Details</i>	6
<i>Harmonies</i>	12
<i>Previews</i>	24
<i>Color Blindness Simulation</i>	28
<i>CSS Examples</i>	31

Color

**YIQ(195.3650, 26.5930,
-2.8710)**

Conversions

Conversions Part 1

Format	Color
Hex	DBBEA1
RGB	219, 190, 161
RGB Percent	86%, 75%, 63%
CMY	0.1411, 0.2549, 0.3685
CMYK	0.00, 0.13, 0.26, 0.14
HSL	30°, 45%, 75%
HSV	30°, 26%, 86%
XYZ	54.0640, 54.4580, 41.3953
YIQ	195.3650, 26.5930, -2.8710

Conversions

Conversions Part 2

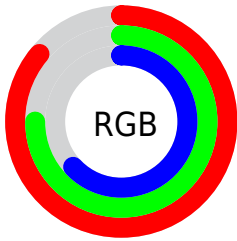
Format	Color
RYB	219, 219, 161
Decimal	14401185
CIELab	78.73, 5.97, 18.44
CIELCh	79, 19.380, 72.062
Yxy	54.4580, 0.3606, 0.3633
Android (android.graphics.Color)	4292591265 (0xFFDBBEA1)
YUV	195.3650, -16.9419, 20.7279
Hunter-Lab	73.7957, 1.6298, 18.3986

Details

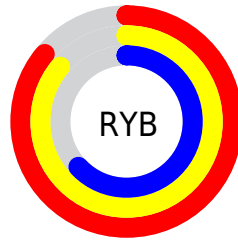
The YIQ color $195.3650, 26.5930, -2.8710$ is a light color, and the websafe version is hex `CCCC99`. A complement of this color would be $184.6350, -26.5930, 2.8710$, and the grayscale version is $196.0000, -0.0000, -0.0000$.

A 20% lighter version of the original color is $245.2710, 14.9940, -7.4220$, and $141.5820, 24.4840, -3.1960$ is the 20% darker color. If you saturate the color by 10%, you get $186.4000, 36.6800, -3.9600$, and if you desaturate by 10%, it is $204.3300, 16.5060, -1.7820$.

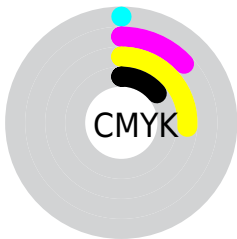
Distribution



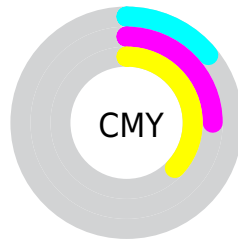
- Red (86%)
- Green (75%)
- Blue (63%)



- Red (86%)
- Yellow (86%)
- Blue (63%)



- Cyan (0%)
- Magenta (13%)
- Yellow (26%)
- Black (14%)



- Cyan (14%)
- Magenta (25%)
- Yellow (37%)

Brightness & Saturation Gradients

These gradients show how the YIQ color 195.3650, 26.5930, -2.8710 changes by changing the brightness by 10 percent. The first figure shows a shift by +10% for each color and the second figure -10%.

Similar to the brightness gradients but the following saturation gradients show a change of the YIQ color 195.3650, 26.5930, -2.8710 by changing the saturation by 10% instead.

■ 195.3650, 26.5930,
-2.8710

■ 195.3650, 26.5930,
-2.8710

■ 255.0000, -0.0000,
-0.0000

■ 168.1800, 25.6760,
-2.7720

■ 245.2710, 14.9940,
-7.4220

■ 141.5820, 24.4840,
-3.1960

■ 253.7460, 3.5310,
-3.4210

■ 115.8100, 23.8420,
-2.5740

■ 91.3260, 22.3290,
-2.6870

■ 67.4290, 20.5410,
-3.3230

■ 45.0590, 18.7070,
-3.1250

■ 23.9880, 17.4690,

-2.7150

■ 0.2990, 0.5960,
0.2120

■ 0.0000, 0.0000,
0.0000

■ 195.3650, 26.5930,
-2.8710

■ 195.3650, 26.5930,
-2.8710

■ 186.4000, 36.6800,
-3.9600

■ 204.3300, 16.5060,
-1.7820

■ 177.4350, 46.7670,
-5.0490

■ 213.2950, 6.4190,
-0.6930

■ 168.4700, 56.8540,
-6.1380

■ 222.2600, -3.6680,
0.3960

■ 159.5050, 66.9410,
-7.2270

■ 231.2250,
-13.7550, 1.4850

■ 150.6540, 76.7070,
-8.0050

■ 238.3660,
-18.7060, -2.4020

■ 141.6890, 86.7940,
-9.0940

■ 244.2360,
-21.4560, -7.6320

■ 132.7240, 96.8810,
-10.1830

■ 129.4640,
100.5490, -10.5790

Harmonies

Analogous

The Analogous color harmony consists of three colors that are next to each other on the color wheel.



196.8590, 31.3140, 5.1860



195.3650, 26.5930, -2.8710



193.3910, 14.5360, -10.1360

Triad

The Triadic color harmony groups three colors that are evenly spaced from another and form a triangle on the color wheel.



195.3650, 26.5930, -2.8710



187.9140, -32.4130, -12.8050



197.5570, 0.4100, 14.6020

Complementary

The Complementary color scheme is a pair of colors which are on the opposite of each other on the color wheel.



195.3650, 26.5930, -2.8710



184.6350, -26.5930, 2.8710

Split Complementary

Split-complementary colors differ from the complementary color scheme. The scheme consists of three colors, the original color and two neighbors of the complement color.



195.1140, -17.5160, 9.0760



195.3650, 26.5930, -2.8710



188.8520, -37.8700, -7.5180

Square

The Square scheme is like the rectangle color scheme, but the four colors are evenly spaced on the color wheel.



195.3650, 26.5930, -2.8710



188.7490, -18.8870, -15.6470



191.9440, -31.9570, 0.9630



197.8810, 17.0530, 15.8450

Rectangle

The Rectangle color scheme consists of four colors that form a rectangle on the color wheel.



195.3650, 26.5930, -2.8710



192.3080, 4.4040, -13.7400



191.9440, -31.9570, 0.9630



196.9800, -5.2750, 13.0050

Sweetspot

The Sweet Spot groups the original color and five complimentary colors.



195.3650, 26.5930, -2.8710



246.8500, 9.1700, -0.9900



181.7620, 24.9380, 21.6260



122.4090, 6.0980, -0.3820



0.0000, 0.0000, 0.0000



128.0000, -0.0000, -0.0000

Same Dimension

The Same Dimension uses a secret algorithm to generate beautiful new colors.



195.3650, 26.5930, -2.8710



221.5850, 37.5970, -4.0590



211.8010, 18.8930, -17.5150



105.2240, 5.1810, -0.2830



102.7960, 79.1830, -8.8250



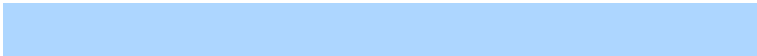
27.2550, 21.0910, -2.2770

Inverse Universe

The Inverse Universe completely reimagines the original color for something new.



184.6350, -26.5930, 2.8710



206.4150, -37.5970, 4.0590



168.1990, -18.8930, 17.5150



103.1890, -4.9060, 0.8060



70.7910, -79.4580, 8.3020



18.7450, -21.0910, 2.2770

Previews

White Background



This preview shows how the YIQ color 195.3650, 26.5930, -2.8710 looks on a white background.

Color Contrast Check

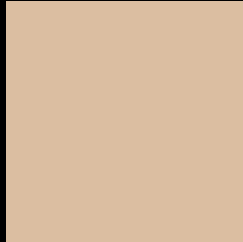
Large Text (above 18pt) WCAG AA × Fail

Any Text WCAG AA × Fail

Large Text (above 18pt) WCAG AAA × Fail

Any Text WCAG AAA × Fail

Black Background



This preview shows how the YIQ color 195.3650, 26.5930, -2.8710 looks on a black background.

Color Contrast Check

Large Text (above 18pt) WCAG AA ✓ Pass

Any Text WCAG AA ✓ Pass

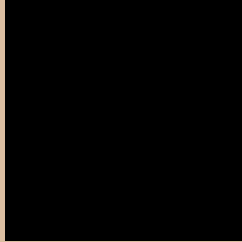
Large Text (above 18pt) WCAG AAA ✓ Pass

Any Text WCAG AAA ✓ Pass

If you want to check with other color combinations, try the [Color Contrast Checker](#).

YIQ 195.3650, 26.5930, -2.8710

Background



This preview shows how black text looks on a background with the YIQ color 195.3650, 26.5930, -2.8710.



This preview shows how white text looks on a background with the YIQ color 195.3650, 26.5930,

-2.8710.

Color Blindness Simulation

Color vision deficiency is a very complex topic, and I could not describe the different causes any better than Wikipedia does, so if you want to learn more, you should check out their [article about color blindness](#).

Dichromacy



Original Color

195.3650, 26.5930, -2.8710

Protanopia

194.6410, 16.8280, -7.6200

Deuteranopia

195.5120, 30.6730, 0.2810



Tritanopia

197.9580, 18.1540, 12.4100

Trichromacy



Original Color

195.3650, 26.5930, -2.8710

Protanomaly

194.8480, 20.6790, -5.8250

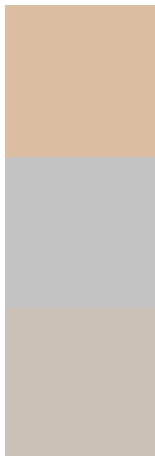
Deuteranomaly

195.5010, 29.2060, -0.6660

Tritanomaly

197.2370, 21.5020, 6.7980

Monochromacy



Original Color

195.3650, 26.5930, -2.8710

Achromatopsia

195.0000, -0.0000, 0.0000

Achromatomaly

195.1490, 9.7660, -0.7780

CSS Examples

Text

The CSS property to change the color of the text to YIQ 195.3650, 26.5930, -2.8710 is called "color". The color property can be set on classes, ids or directly on the HTML element.

This example shows how text in the color `rgb(219, 190, 161)` looks like.

```
.text, #text, p{  
    color:rgb(219, 190, 161)  
}
```

If you want to add a text shadow in that color use the text-shadow property, you can generate a text shadow directly with our [CSS Text Shadow Generator](#).

Here you see how black text with a 4 pixel rgb(219, 190, 161) colored shadow looks like.

```
.shadow{ text-shadow: 4px 4px 2px rgb(219, 190, 161) }
```

Border

The CSS property to change the border of an element to YIQ 195.3650, 26.5930, -2.8710 is called "border". The border property can be set on classes, ids or directly on the HTML element.

This example shows the color as border, it can be applied via the CSS property "border" or "border-color".

```
.border, #border, table{ border:4px solid rgb(219, 190, 161) }
```


If only the border color should be changed use the property `border-color`.

```
.border{ border-color:rgb(219, 190, 161) }
```

If you want to add a box shadow in that color use:

Here you see how a box with a 4 pixel `rgb(219, 190, 161)` colored shadow looks like.

```
.boxshadow{ -moz-box-shadow:4px 4px 4px  
4px rgb(219, 190, 161); -webkit-box-  
shadow:4px 4px 4px 4px rgb(219, 190, 161);  
box-shadow:4px 4px 4px 4px rgb(219, 190,  
161) }
```

Background

The CSS property to change the background color of an element to YIQ 195.3650, 26.5930, -2.8710 is called "background". The background property can be set on classes, ids or directly on the HTML element.

```
.background, #background, body{  
background: rgb(219, 190, 161) }
```

If only the background color should be changed can be used:

```
.background{ background-color: rgb(219,  
190, 161) }
```

This example shows the color as background, it is applied via the CSS property "background".

To optimize and compress your CSS code, you can use our [online CSS compressor and optimizer](#) based on csstidy. If you want to create a linear or radial gradient as background or border, check our [CSS Gradient Generator](#).

Hey! You found this booklet interesting? Support Converting Colors with the new Membership Option!

The pro membership hides all ads, plus gives you double the colors in the color bucket, and more awesome pro features!

[Learn more, Memberships starting at \\$2.50/m!](#)

**Follow me
on Twitter!**

@ConvertingColor