

Converting Colors

YIQ(195.4620, 7.7470, 8.2830)

Have a look what the booklet for
YIQ(195.4620, 7.7470, 8.2830)
contains.

YIQ(195.4620, 7.7470, 8.2830)	3
<i>Conversions</i>	4
<i>Details</i>	6
<i>Harmonies</i>	12
<i>Previews</i>	24
<i>Color Blindness Simulation</i>	28
<i>CSS Examples</i>	31

Color

**YIQ(195.4620, 7.7470,
8.2830)**

Conversions

Conversions Part 1

Format	Color
Hex	D0BCC9
RGB	208, 188, 201
RGB Percent	82%, 74%, 79%
CMY	0.1843, 0.2628, 0.2117
CMYK	0.00, 0.10, 0.03, 0.18
HSL	321°, 18%, 78%
HSV	321°, 10%, 82%
XYZ	54.5411, 53.5921, 62.7313
YIQ	195.4620, 7.7470, 8.2830

Conversions

Conversions Part 2

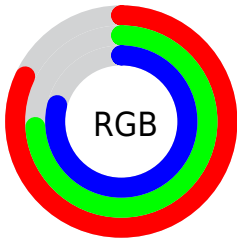
Format	Color
R _Y B	208, 188, 201
Decimal	13679817
CIE Lab	78.22, 9.36, -3.97
CIE LCh	78, 10.165, 337.037
Yxy	53.5921, 0.3192, 0.3137
Android (android.graphics.Color)	4291869897 (0xFFD0BCC9)
YUV	195.4620, 2.7302, 10.9958
Hunter-Lab	73.2066, 4.8761, 0.4386

Details

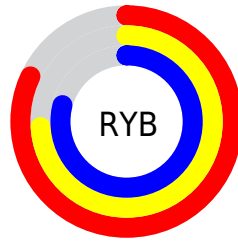
The YIQ color $195.4620, 7.7470, 8.2830$ is a light color, and the websafe version is hex `CCCCCC`. A complement of this color would be $200.5380, -7.7470, -8.2830$, and the grayscale version is $195.0000, -0.0000, 0.0000$.

A 20% lighter version of the original color is $248.5430, 3.0250, 5.7530$, and $142.0490, 7.4720, 7.7600$ is the 20% darker color. If you saturate the color by 10%, you get $182.3370, 15.7690, 17.0890$, and if you desaturate by 10%, it is $208.5870, -0.2750, -0.5230$.

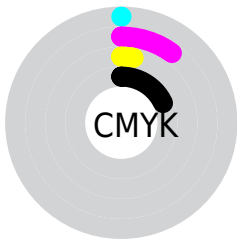
Distribution



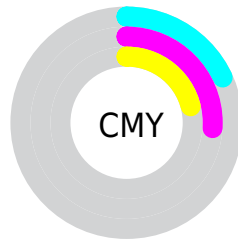
- Red (82%)
- Green (74%)
- Blue (79%)



- Red (82%)
- Yellow (74%)
- Blue (79%)



- Cyan (0%)
- Magenta (10%)
- Yellow (3%)
- Black (18%)



- Cyan (18%)
- Magenta (26%)
- Yellow (21%)

Brightness & Saturation Gradients

These gradients show how the YIQ color 195.4620, 7.7470, 8.2830 changes by changing the brightness by 10 percent. The first figure shows a shift by +10% for each color and the second figure -10%.

Similar to the brightness gradients but the following saturation gradients show a change of the YIQ color 195.4620, 7.7470, 8.2830 by changing the saturation by 10% instead.

■ 195.4620, 7.7470,
8.2830

■ 195.4620, 7.7470,
8.2830

255.0000, -0.0000,
-0.0000

■ 168.1630, 7.1510,
8.0710

■ 248.5430, 3.0250,
5.7530

■ 142.0490, 7.4720,
7.7600

■ 116.0490, 7.4720,
7.7600

■ 91.4510, 6.2800,
7.3360

■ 68.0380, 6.0050,
6.8130

■ 45.6250, 5.7300,
6.2900

■ 25.2120, 5.4550,

5.7670

■ 1.1250, 1.1460,
1.2580

■ 0.0000, 0.0000,
0.0000

■ 195.4620, 7.7470,
8.2830

■ 195.4620, 7.7470,
8.2830

■ 182.3370, 15.7690,
17.0890

■ 208.5870, -0.2750,
-0.5230

■ 169.0980, 24.1120,
25.5840

■ 221.8260, -8.6180,
-9.0180

■ 156.5600, 31.8590,
33.8670

■ 234.3640,
-16.3650, -17.3010

■ 143.4350, 39.8810,
42.6730

■ 238.0970,
-19.9870, -17.7390

■ 130.3100, 47.9030,
51.4790

■ 238.8950,
-22.2340, -15.5620

■ 117.0710, 56.2460,
59.9740

■ 239.8070,
-24.8020, -13.0740

■ 103.9460, 64.2680,
68.7800

■ 240.6050,
-27.0490, -10.8970

■ 91.4080, 72.0150,
77.0630

■ 240.9470,
-28.0120, -9.9640

■ 78.1690, 80.3580,
85.5580

Harmonies

Analogous

The Analogous color harmony consists of three colors that are next to each other on the color wheel.



194.5580, -1.3310, 7.6050



195.4620, 7.7470, 8.2830



195.2300, 14.2120, 6.7560

Triad

The Triadic color harmony groups three colors that are evenly spaced from another and form a triangle on the color wheel.



195.4620, 7.7470, 8.2830



192.7420, 9.3540, -4.3260



190.6110, -18.0180, -3.8580

Complementary

The Complementary color scheme is a pair of colors which are on the opposite of each other on the color wheel.



195.4620, 7.7470, 8.2830



200.5380, -7.7470, -8.2830

Split Complementary

Split-complementary colors differ from the complementary color scheme. The scheme consists of three colors, the original color and two neighbors of the complement color.



190.1720, -15.4040, -7.1800



195.4620, 7.7470, 8.2830



191.5560, 1.0100, -7.2940

Square

The Square scheme is like the rectangle color scheme, but the four colors are evenly spaced on the color wheel.



195.4620, 7.7470, 8.2830



193.7860, 15.2220, -0.5380



190.6520, -8.0680, -7.9720



191.6160, -16.4140, 0.1140

Rectangle

The Rectangle color scheme consists of four colors that form a rectangle on the color wheel.



195.4620, 7.7470, 8.2830



195.4320, 16.4590, 4.5790



190.6520, -8.0680, -7.9720



190.6710, -18.2470, -5.2150

Sweetspot

The Sweet Spot groups the original color and five complimentary colors.



195.4620, 7.7470, 8.2830



249.9620, 3.1630, 3.2510



192.3730, -2.2480, 7.7040



124.2500, 2.2920, 2.5160



0.0000, 0.0000, 0.0000



128.0000, -0.0000, -0.0000

Same Dimension

The Same Dimension uses a secret algorithm to generate beautiful new colors.



195.4620, 7.7470, 8.2830



235.5490, 12.0560, 12.7920



194.3220, 10.9570, 5.1730



98.0870, 4.3090, 4.5090



62.6580, 65.1390, 69.5150



15.3370, 15.7690, 17.0890

Inverse Universe

The Inverse Universe completely reimagines the original color for something new.



195.4620, 7.7470, 8.2830



235.5490, 12.0560, 12.7920



201.6780, -10.9570, -5.1730



98.0870, 4.3090, 4.5090



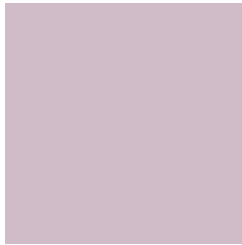
62.6580, 65.1390, 69.5150



15.3370, 15.7690, 17.0890

Previews

White Background



This preview shows how the YIQ color 195.4620, 7.7470, 8.2830 looks on a white background.

Color Contrast Check

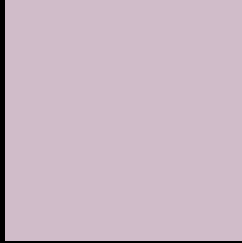
Large Text (above 18pt) WCAG AA × Fail

Any Text WCAG AA × Fail

Large Text (above 18pt) WCAG AAA × Fail

Any Text WCAG AAA × Fail

Black Background



This preview shows how the YIQ color 195.4620, 7.7470, 8.2830 looks on a black background.

Color Contrast Check

Large Text (above 18pt) WCAG AA ✓ Pass

Any Text WCAG AA ✓ Pass

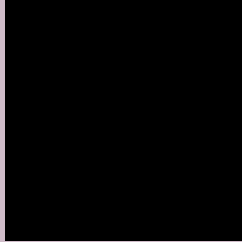
Large Text (above 18pt) WCAG AAA ✓ Pass

Any Text WCAG AAA ✓ Pass

If you want to check with other color combinations, try the [Color Contrast Checker](#).

YIQ 195.4620, 7.7470, 8.2830

Background



This preview shows how black text looks on a background with the YIQ color 195.4620, 7.7470, 8.2830.



This preview shows how white text looks on a background with the YIQ color 195.4620, 7.7470,

8.2830.

Color Blindness Simulation

Color vision deficiency is a very complex topic, and I could not describe the different causes any better than Wikipedia does, so if you want to learn more, you should check out their [article about color blindness](#).

Dichromacy



Original Color

195.4620, 7.7470, 8.2830

Protanopia

193.9660, -2.6600, 4.1560

Deuteranopia

195.7610, 8.3430, 8.4950



Tritanopia

195.5760, 7.4260, 8.5940

Trichromacy



Original Color

195.4620, 7.7470, 8.2830

Protanomaly

194.7600, 0.9160, 5.4280

Deuteranomaly

195.7610, 8.3430, 8.4950

Tritanomaly

195.5760, 7.4260, 8.5940

Monochromacy



Original Color

195.4620, 7.7470, 8.2830

Achromatopsia

195.0000, -0.0000, 0.0000

Achromatomaly

194.9620, 3.1630, 3.2510

CSS Examples

Text

The CSS property to change the color of the text to YIQ 195.4620, 7.7470, 8.2830 is called "color". The color property can be set on classes, ids or directly on the HTML element.

This example shows how text in the color `rgb(208, 188, 201)` looks like.

```
.text, #text, p{  
    color:rgb(208, 188, 201)  
}
```

If you want to add a text shadow in that color use the text-shadow property, you can generate a text shadow directly with our [CSS Text Shadow Generator](#).

Here you see how black text with a 4 pixel rgb(208, 188, 201) colored shadow looks like.

```
.shadow{ text-shadow: 4px 4px 2px rgb(208, 188, 201) }
```

Border

The CSS property to change the border of an element to YIQ 195.4620, 7.7470, 8.2830 is called "border". The border property can be set on classes, ids or directly on the HTML element.

This example shows the color as border, it can be applied via the CSS property "border" or "border-color".

```
.border, #border, table{ border:4px solid rgb(208, 188, 201) }
```


If only the border color should be changed use the property `border-color`.

```
.border{ border-color:rgb(208, 188, 201) }
```

If you want to add a box shadow in that color use:

Here you see how a box with a 4 pixel `rgb(208, 188, 201)` colored shadow looks like.

```
.boxshadow{ -moz-box-shadow:4px 4px 4px  
4px rgb(208, 188, 201); -webkit-box-  
shadow:4px 4px 4px 4px rgb(208, 188, 201);  
box-shadow:4px 4px 4px 4px rgb(208, 188,  
201) }
```

Background

The CSS property to change the background color of an element to YIQ 195.4620, 7.7470, 8.2830 is called "background". The background property can be set on classes, ids or directly on the HTML element.

```
.background, #background, body{  
background: rgb(208, 188, 201) }
```

If only the background color should be changed can be used:

```
.background{ background-color: rgb(208,  
188, 201) }
```

This example shows the color as background, it is applied via the CSS property "background".

To optimize and compress your CSS code, you can use our [online CSS compressor and optimizer](#) based on csstidy. If you want to create a linear or radial gradient as background or border, check our [CSS Gradient Generator](#).

Hey! You found this booklet interesting? Support Converting Colors with the new Membership Option!

The pro membership hides all ads, plus gives you double the colors in the color bucket, and more awesome pro features!

[Learn more, Memberships starting at \\$2.50/m!](#)

**Follow me
on Twitter!**

@ConvertingColor