

Converting Colors

YIQ(196.2730, 29.8480, -1.2880)

Have a look what the booklet for
YIQ(196.2730, 29.8480, -1.2880)
contains.

YIQ(196.2730, 29.8480, -1.2880)	3
<i>Conversions</i>	4
<i>Details</i>	6
<i>Harmonies</i>	12
<i>Previews</i>	24
<i>Color Blindness Simulation</i>	28
<i>CSS Examples</i>	31

Color

**YIQ(196.2730, 29.8480,
-1.2880)**

Conversions

Conversions Part 1

Format	Color
Hex	E0BDA1
RGB	224, 189, 161
RGB Percent	88%, 74%, 63%
CMY	0.1215, 0.2589, 0.3685
CMYK	0.00, 0.16, 0.28, 0.12
HSL	27°, 50%, 76%
HSV	27°, 28%, 88%
XYZ	55.3763, 54.8133, 41.3961
YIQ	196.2730, 29.8480, -1.2880

Conversions

Conversions Part 2

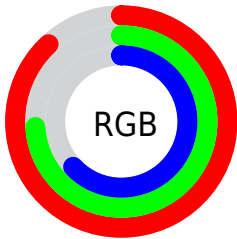
Format	Color
R_{YB}	224, 211, 161
Decimal	14728609
CIE _{Lab}	78.93, 8.41, 18.79
CIE _{LCh}	79, 20.587, 65.895
Yxy	54.8133, 0.3653, 0.3616
Android (android.graphics.Color)	4292918689 (0xFFE0BDA1)
YUV	196.2730, -17.3896, 24.3166
Hunter-Lab	74.0360, 3.9486, 18.6741

Details

The YIQ color $196.2730, 29.8480, -1.2880$ is a light color, and the websafe version is hex FFCC99 . A complement of this color would be $188.7270, -29.8480, 1.2880$, and the grayscale version is $196.0000, -0.0000, -0.0000$.

A 20% lighter version of the original color is $244.6840, 15.2690, -6.8990$, and $142.4900, 27.7390, -1.6130$ is the 20% darker color. If you saturate the color by 10%, you get $186.7210, 40.2100, -1.8540$, and if you desaturate by 10%, it is $205.8250, 19.4860, -0.7220$.

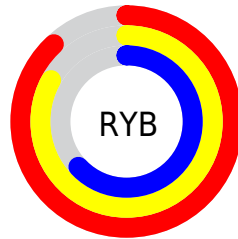
Distribution



Red (88%)

Green (74%)

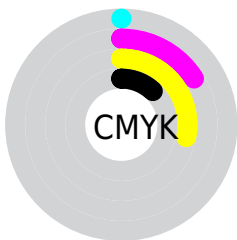
Blue (63%)



Red (88%)

Yellow (83%)

Blue (63%)

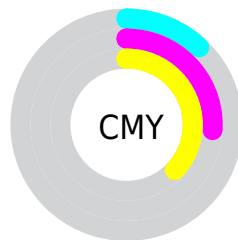


Cyan (0%)

Magenta (16%)

Yellow (28%)

Black (12%)



Cyan (12%)

Magenta (26%)

Yellow (37%)

Brightness & Saturation Gradients

These gradients show how the YIQ color 196.2730, 29.8480, -1.2880 changes by changing the brightness by 10 percent. The first figure shows a shift by +10% for each color and the second figure -10%.

Similar to the brightness gradients but the following saturation gradients show a change of the YIQ color 196.2730, 29.8480, -1.2880 by changing the saturation by 10% instead.

196.2730, 29.8480,
-1.2880

196.2730, 29.8480,
-1.2880

255.0000, -0.0000,
-0.0000

169.0880, 28.9310,
-1.1890

244.6840, 15.2690,
-6.8990

142.4900, 27.7390,
-1.6130

253.7460, 3.5310,
-3.4210

116.4190, 26.5010,
-1.2030

91.9350, 24.9880,
-1.3160

68.0380, 23.2000,
-1.9520

45.6680, 21.3660,
-1.7540

24.2980, 19.5320,

-1.5560

■ 2.9900, 5.9600,
2.1200

■ 0.0000, 0.0000,
0.0000

■ 196.2730, 29.8480,
-1.2880

■ 196.2730, 29.8480,
-1.2880

■ 186.7210, 40.2100,
-1.8540

■ 205.8250, 19.4860,
-0.7220

■ 176.4680, 51.1680,
-2.2080

■ 216.0780, 8.5280,
-0.3680

■ 166.9160, 61.5300,
-2.7740

■ 225.6300, -1.8340,
0.1980

■ 156.6630, 72.4880,
-3.1280

■ 235.8830,
-12.7920, 0.5520

■ 147.1110, 82.8500,
-3.6940

■ 243.3830,
-17.3760, -4.4800

■ 136.9720, 93.4870,
-3.7370

■ 245.7310,
-18.4760, -6.5720

■ 127.3060,
104.1700, -4.6140

■ 125.0890,
106.2790, -4.2890

Harmonies

Analogous

The Analogous color harmony consists of three colors that are next to each other on the color wheel.



197.8100, 33.0100, 7.4900



196.2730, 29.8480, -1.2880



193.9570, 18.7540, -9.4860

Triad

The Triadic color harmony groups three colors that are evenly spaced from another and form a triangle on the color wheel.



196.2730, 29.8480, -1.2880



188.4470, -32.5960, -14.9960



197.7030, -2.9370, 14.6870

Complementary

The Complementary color scheme is a pair of colors which are on the opposite of each other on the color wheel.



196.2730, 29.8480, -1.2880



188.7270, -29.8480, 1.2880

Split Complementary

Split-complementary colors differ from the complementary color scheme. The scheme consists of three colors, the original color and two neighbors of the complement color.



195.1350, -22.0090, 7.9030



196.2730, 29.8480, -1.2880



188.1290, -40.2080, -9.2000

Square

The Square scheme is like the rectangle color scheme, but the four colors are evenly spaced on the color wheel.



196.2730, 29.8480, -1.2880



189.7770, -16.0900, -16.7780



191.4380, -36.4040, -1.0440



199.0380, 15.1730, 16.8770

Rectangle

The Rectangle color scheme consists of four colors that form a rectangle on the color wheel.



196.2730, 29.8480, -1.2880



192.5750, 8.0260, -13.3020



191.4380, -36.4040, -1.0440



196.9410, -9.5390, 13.1890

Sweetspot

The Sweet Spot groups the original color and five complimentary colors.



196.2730, 29.8480, -1.2880



246.2630, 9.4450, -0.4670



183.9410, 25.9920, 24.5520



121.8220, 6.3730, 0.1410



0.0000, 0.0000, 0.0000



128.0000, -0.0000, -0.0000

Same Dimension

The Same Dimension uses a secret algorithm to generate beautiful new colors.



196.2730, 29.8480, -1.2880



216.9060, 41.1270, -1.9530



214.4700, 21.3230, -17.5010



107.2240, 5.1810, -0.2830



98.4100, 83.4460, -3.4820



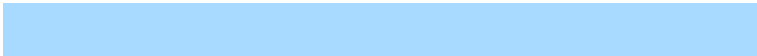
27.2660, 22.5580, -1.3300

Inverse Universe

The Inverse Universe completely reimagines the original color for something new.



188.7270, -29.8480, 1.2880



206.6810, -41.4020, 1.4300



170.5300, -21.3230, 17.5010



105.7760, -5.1810, 0.2830



77.5900, -83.4460, 3.4820



21.3210, -22.8330, 0.8070

Previews

White Background



This preview shows how the YIQ color 196.2730, 29.8480, -1.2880 looks on a white background.

Color Contrast Check

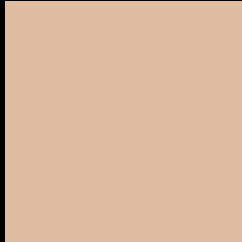
Large Text (above 18pt) WCAG AA × Fail

Any Text WCAG AA × Fail

Large Text (above 18pt) WCAG AAA × Fail

Any Text WCAG AAA × Fail

Black Background



This preview shows how the YIQ color 196.2730, 29.8480, -1.2880 looks on a black background.

Color Contrast Check

Large Text (above 18pt) WCAG AA ✓ Pass

Any Text WCAG AA ✓ Pass

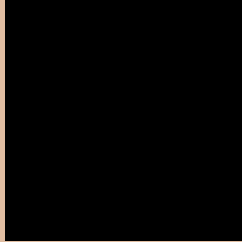
Large Text (above 18pt) WCAG AAA ✓ Pass

Any Text WCAG AAA ✓ Pass

If you want to check with other color combinations, try the [Color Contrast Checker](#).

YIQ 196.2730, 29.8480, -1.2880

Background



This preview shows how black text looks on a background with the YIQ color 196.2730, 29.8480, -1.2880.



This preview shows how white text looks on a background with the YIQ color 196.2730, 29.8480, -1.2880.

-1.2880.

Color Blindness Simulation

Color vision deficiency is a very complex topic, and I could not describe the different causes any better than Wikipedia does, so if you want to learn more, you should check out their [article about color blindness](#).

Dichromacy



Original Color

196.2730, 29.8480, -1.2880

Protanopia

194.7550, 16.5070, -7.3090

Deuteranopia

196.2840, 31.3150, -0.3410



Tritanopia

198.7520, 21.7300, 13.6820

Trichromacy



Original Color

196.2730, 29.8480, -1.2880

Protanomaly

195.5600, 21.5500, -5.0900

Deuteranomaly

195.9850, 30.7190, -0.5530

Tritanomaly

198.1450, 24.7570, 8.3810

Monochromacy



Original Color

196.2730, 29.8480, -1.2880

Achromatopsia

196.0000, -0.0000, -0.0000

Achromatomaly

195.7470, 10.9580, -0.3540

CSS Examples

Text

The CSS property to change the color of the text to YIQ 196.2730, 29.8480, -1.2880 is called "color". The color property can be set on classes, ids or directly on the HTML element.

This example shows how text in the color `rgb(224, 189, 161)` looks like.

```
.text, #text, p{  
    color:rgb(224, 189, 161)  
}
```

If you want to add a text shadow in that color use the text-shadow property, you can generate a text shadow directly with our [CSS Text Shadow Generator](#).

Here you see how black text with a 4 pixel rgb(224, 189, 161) colored shadow looks like.

```
.shadow{ text-shadow: 4px 4px 2px rgb(224, 189, 161) }
```

Border

The CSS property to change the border of an element to YIQ 196.2730, 29.8480, -1.2880 is called "border". The border property can be set on classes, ids or directly on the HTML element.

This example shows the color as border, it can be applied via the CSS property "border" or "border-color".

```
.border, #border, table{ border:4px solid rgb(224, 189, 161) }
```


If only the border color should be changed use the property `border-color`.

```
.border{ border-color:rgb(224, 189, 161) }
```

If you want to add a box shadow in that color use:

Here you see how a box with a 4 pixel `rgb(224, 189, 161)` colored shadow looks like.

```
.boxshadow{ -moz-box-shadow:4px 4px 4px  
4px rgb(224, 189, 161); -webkit-box-  
shadow:4px 4px 4px 4px rgb(224, 189, 161);  
box-shadow:4px 4px 4px 4px rgb(224, 189,  
161) }
```

Background

The CSS property to change the background color of an element to YIQ 196.2730, 29.8480, -1.2880 is called "background". The background property can be set on classes, ids or directly on the HTML element.

```
.background, #background, body{  
background: rgb(224, 189, 161) }
```

If only the background color should be changed can be used:

```
.background{ background-color: rgb(224,  
189, 161) }
```

This example shows the color as background, it is applied via the CSS property "background".

To optimize and compress your CSS code, you can use our [online CSS compressor and optimizer](#) based on csstidy. If you want to create a linear or radial gradient as background or border, check our [CSS Gradient Generator](#).

Hey! You found this booklet interesting? Support Converting Colors with the new Membership Option!

The pro membership hides all ads, plus gives you double the colors in the color bucket, and more awesome pro features!

[Learn more, Memberships starting at \\$2.50/m!](#)

**Follow me
on Twitter!**

@ConvertingColor