

Converting Colors

YIQ(196.6570, 19.8990, -2.7010)

Have a look what the booklet for
YIQ(196.6570, 19.8990, -2.7010)
contains.

YIQ(196.6570, 19.8990, -2.7010)	3
<i>Conversions</i>	4
<i>Details</i>	6
<i>Harmonies</i>	12
<i>Previews</i>	24
<i>Color Blindness Simulation</i>	28
<i>CSS Examples</i>	31

Color

**YIQ(196.6570, 19.8990,
-2.7010)**

Conversions

Conversions Part 1

Format	Color
Hex	D6C1AA
RGB	214, 193, 170
RGB Percent	84%, 76%, 67%
CMY	0.1607, 0.2432, 0.3332
CMYK	0.00, 0.10, 0.21, 0.16
HSL	31°, 35%, 75%
HSV	31°, 21%, 84%
XYZ	54.0602, 55.3367, 45.8742
YIQ	196.6570, 19.8990, -2.7010

Conversions

Conversions Part 2

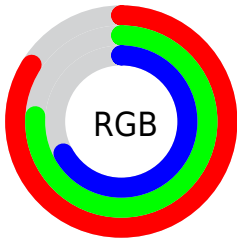
Format	Color
R_{YB}	210, 214, 170
Decimal	14074282
CIE Lab	79.23, 3.77, 14.26
CIE LCh	79, 14.755, 75.177
Yxy	55.3367, 0.3482, 0.3564
Android (android.graphics.Color)	4292264362 (0xFFD6C1AA)
YUV	196.6570, -13.1419, 15.2098
Hunter-Lab	74.3887, -0.4594, 15.5089

Details

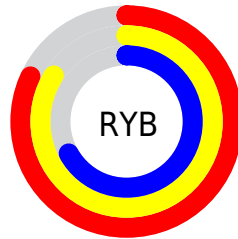
The YIQ color **196.6570, 19.8990, -2.7010** is a light color, and the websafe version is hex **CCCCCC**. A complement of this color would be **187.3430, -19.8990, 2.7010**, and the grayscale version is **197.0000, -0.0000, -0.0000**.

A 20% lighter version of the original color is **248.0580, 11.2800, -6.1920**, and **143.1730, 18.3860, -2.8140** is the 20% darker color. If you saturate the color by 10%, you get **188.3930, 29.3900, -4.0020**, and if you desaturate by 10%, it is **204.9210, 10.4080, -1.4000**.

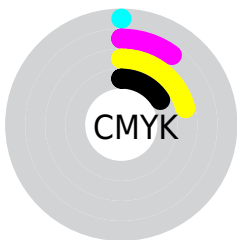
Distribution



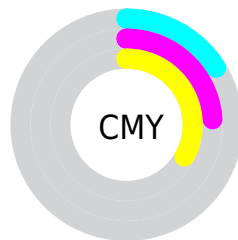
- Red (84%)
- Green (76%)
- Blue (67%)



- Red (82%)
- Yellow (84%)
- Blue (67%)



- Cyan (0%)
- Magenta (10%)
- Yellow (21%)
- Black (16%)



- Cyan (16%)
- Magenta (24%)
- Yellow (33%)

Brightness & Saturation Gradients

These gradients show how the YIQ color 196.6570, 19.8990, -2.7010 changes by changing the brightness by 10 percent. The first figure shows a shift by +10% for each color and the second figure -10%.

Similar to the brightness gradients but the following saturation gradients show a change of the YIQ color 196.6570, 19.8990, -2.7010 by changing the saturation by 10% instead.

■ 196.6570, 19.8990,
-2.7010

■ 196.6570, 19.8990,
-2.7010

255.0000, -0.0000,
-0.0000

■ 169.4720, 18.9820,
-2.6020

■ 248.0580, 11.2800,
-6.1920

■ 143.1730, 18.3860,
-2.8140

254.8860, 0.3210,
-0.3110

■ 116.9880, 17.4690,
-2.7150

■ 92.6890, 16.8730,
-2.9270

■ 68.6180, 15.6350,
-2.5170

■ 46.4330, 14.7180,
-2.4180

■ 25.1510, 15.4520,

-4.7080

■ 0.2990, 0.5960,
0.2120

■ 0.0000, 0.0000,
0.0000

■ 196.6570, 19.8990,
-2.7010

■ 196.6570, 19.8990,
-2.7010

■ 188.3930, 29.3900,
-4.0020

■ 204.9210, 10.4080,
-1.4000

■ 180.0150, 39.2020,
-5.6140

■ 213.2990, 0.5960,
0.2120

■ 171.1640, 48.9680,
-6.3920

■ 222.1500, -9.1700,
0.9900

■ 162.7860, 58.7800,
-8.0040

■ 230.4140,
-18.6610, 2.2910

■ 154.5220, 68.2710,
-9.3050

■ 236.2840,
-21.4110, -2.9390

■ 146.2580, 77.7620,
-10.6060

■ 242.1540,
-24.1610, -8.1690

■ 137.2930, 87.8490,
-11.6950

■ 242.7410,
-24.4360, -8.6920

■ 129.7300, 96.7440,
-13.2080

Harmonies

Analogous

The Analogous color harmony consists of three colors that are next to each other on the color wheel.



197.7980, 24.1160, 3.4760



196.6570, 19.8990, -2.7010



195.4060, 10.1800, -8.2840

Triad

The Triadic color harmony groups three colors that are evenly spaced from another and form a triangle on the color wheel.



196.6570, 19.8990, -2.7010



191.3280, -24.7110, -9.2150



198.6340, 1.5110, 11.1670

Complementary

The Complementary color scheme is a pair of colors which are on the opposite of each other on the color wheel.



196.6570, 19.8990, -2.7010



187.3430, -19.8990, 2.7010

Split Complementary

Split-complementary colors differ from the complementary color scheme. The scheme consists of three colors, the original color and two neighbors of the complement color.



196.6970, -11.9680, 7.6480



196.6570, 19.8990, -2.7010



192.4080, -27.6920, -4.7480

Square

The Square scheme is like the rectangle color scheme, but the four colors are evenly spaced on the color wheel.



196.6570, 19.8990, -2.7010



192.1240, -15.4490, -11.8730



194.7340, -22.5580, 1.3300



199.3920, 13.9360, 11.7600

Rectangle

The Rectangle color scheme consists of four colors that form a rectangle on the color wheel.



196.6570, 19.8990, -2.7010



193.7470, 1.7900, -10.4180



194.7340, -22.5580, 1.3300



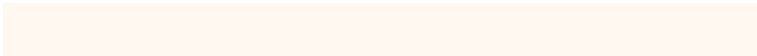
198.0680, -2.7070, 10.5170

Sweetspot

The Sweet Spot groups the original color and five complimentary colors.



196.6570, 19.8990, -2.7010



249.1810, 6.7400, -1.0040



185.5500, 19.4830, 15.8590



124.0390, 4.2640, -0.1840



0.0000, 0.0000, 0.0000



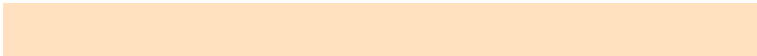
128.0000, -0.0000, -0.0000

Same Dimension

The Same Dimension uses a secret algorithm to generate beautiful new colors.



196.6570, 19.8990, -2.7010



230.0940, 28.7940, -4.2140



208.6850, 13.5280, -13.8960



102.8110, 4.9060, -0.8060



103.3720, 77.4410, -10.2950



26.3580, 19.3030, -2.9130

Inverse Universe

The Inverse Universe completely reimagines the original color for something new.



187.3430, -19.8990, 2.7010



216.4930, -29.0690, 3.6910



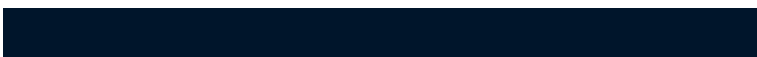
175.3150, -13.5280, 13.8960



100.7760, -5.1810, 0.2830



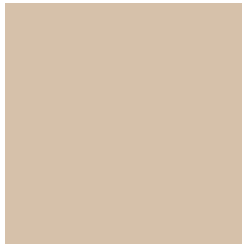
67.6280, -77.4410, 10.2950



17.2290, -19.5780, 2.3900

Previews

White Background



This preview shows how the YIQ color 196.6570, 19.8990, -2.7010 looks on a white background.

Color Contrast Check

Large Text (above 18pt) WCAG AA × Fail

Any Text WCAG AA × Fail

Large Text (above 18pt) WCAG AAA × Fail

Any Text WCAG AAA × Fail

Black Background



This preview shows how the YIQ color 196.6570, 19.8990, -2.7010 looks on a black background.

Color Contrast Check

Large Text (above 18pt) WCAG AA ✓ Pass

Any Text WCAG AA ✓ Pass

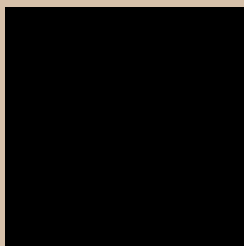
Large Text (above 18pt) WCAG AAA ✓ Pass

Any Text WCAG AAA ✓ Pass

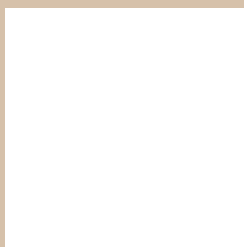
If you want to check with other color combinations, try the [Color Contrast Checker](#).

YIQ 196.6570, 19.8990, -2.7010

Background



This preview shows how black text looks on a background with the YIQ color 196.6570, 19.8990, -2.7010.



This preview shows how white text looks on a background with the YIQ color 196.6570, 19.8990,

-2.7010.

Color Blindness Simulation

Color vision deficiency is a very complex topic, and I could not describe the different causes any better than Wikipedia does, so if you want to learn more, you should check out their [article about color blindness](#).

Dichromacy



Original Color

196.6570, 19.8990, -2.7010

Protanopia

196.1400, 13.9850, -5.6550

Deuteranopia

197.4130, 26.6380, 1.8220



Tritanopia

198.6800, 13.0650, 11.0250

Trichromacy



Original Color

196.6570, 19.8990, -2.7010

Protanomaly

196.4500, 16.0480, -4.4960

Deuteranomaly

196.8040, 23.9790, 0.4510

Tritanomaly

198.1870, 15.7710, 6.0350

Monochromacy



Original Color

196.6570, 19.8990, -2.7010

Achromatopsia

197.0000, -0.0000, -0.0000

Achromatomaly

197.0670, 7.0610, -1.3150

CSS Examples

Text

The CSS property to change the color of the text to YIQ 196.6570, 19.8990, -2.7010 is called "color". The color property can be set on classes, ids or directly on the HTML element.

This example shows how text in the color `rgb(214, 193, 170)` looks like.

```
.text, #text, p{  
    color:rgb(214, 193, 170)  
}
```

If you want to add a text shadow in that color use the text-shadow property, you can generate a text shadow directly with our [CSS Text Shadow Generator](#).

Here you see how black text with a 4 pixel rgb(214, 193, 170) colored shadow looks like.

```
.shadow{ text-shadow: 4px 4px 2px rgb(214, 193, 170) }
```

Border

The CSS property to change the border of an element to YIQ 196.6570, 19.8990, -2.7010 is called "border". The border property can be set on classes, ids or directly on the HTML element.

This example shows the color as border, it can be applied via the CSS property "border" or "border-color".

```
.border, #border, table{ border:4px solid rgb(214, 193, 170) }
```


If only the border color should be changed use the property `border-color`.

```
.border{ border-color:rgb(214, 193, 170) }
```

If you want to add a box shadow in that color use:

Here you see how a box with a 4 pixel `rgb(214, 193, 170)` colored shadow looks like.

```
.boxshadow{ -moz-box-shadow:4px 4px 4px  
4px rgb(214, 193, 170); -webkit-box-  
shadow:4px 4px 4px 4px rgb(214, 193, 170);  
box-shadow:4px 4px 4px 4px rgb(214, 193,  
170) }
```

Background

The CSS property to change the background color of an element to YIQ 196.6570, 19.8990, -2.7010 is called "background". The background property can be set on classes, ids or directly on the HTML element.

```
.background, #background, body{  
background: rgb(214, 193, 170) }
```

If only the background color should be changed can be used:

```
.background{ background-color: rgb(214,  
193, 170) }
```

This example shows the color as background, it is applied via the CSS property "background".

To optimize and compress your CSS code, you can use our [online CSS compressor and optimizer](#) based on csstidy. If you want to create a linear or radial gradient as background or border, check our [CSS Gradient Generator](#).

Hey! You found this booklet interesting? Support Converting Colors with the new Membership Option!

The pro membership hides all ads, plus gives you double the colors in the color bucket, and more awesome pro features!

[Learn more, Memberships starting at \\$2.50/m!](#)

**Follow me
on Twitter!**

@ConvertingColor