

Converting Colors

YIQ(197.5220, 24.7130, -1.8390)

Have a look what the booklet for
YIQ(197.5220, 24.7130, -1.8390)
contains.

YIQ(197.5220, 24.7130, -1.8390)	3
<i>Conversions</i>	4
<i>Details</i>	6
<i>Harmonies</i>	12
<i>Previews</i>	24
<i>Color Blindness Simulation</i>	28
<i>CSS Examples</i>	31

Color

**YIQ(197.5220, 24.7130,
-1.8390)**

Conversions

Conversions Part 1

Format	Color
Hex	DCC0A7
RGB	220, 192, 167
RGB Percent	86%, 75%, 65%
CMY	0.1372, 0.2471, 0.3450
CMYK	0.00, 0.13, 0.24, 0.14
HSL	28°, 43%, 76%
HSV	28°, 24%, 86%
XYZ	55.3440, 55.7029, 44.4085
YIQ	197.5220, 24.7130, -1.8390

Conversions

Conversions Part 2

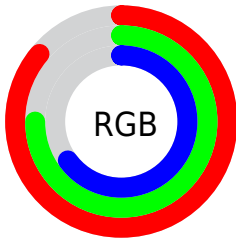
Format	Color
R _Y B	220, 214, 167
Decimal	14467239
CIE Lab	79.44, 6.12, 16.24
CIE LCh	79, 17.356, 69.336
Yxy	55.7029, 0.3560, 0.3583
Android (android.graphics.Color)	4292657319 (0xFFDCC0A7)
YUV	197.5220, -15.0473, 19.7132
Hunter-Lab	74.6344, 1.7539, 16.9656

Details

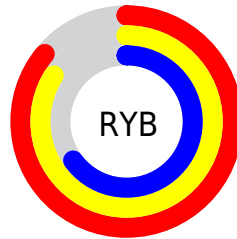
The YIQ color $197.5220, 24.7130, -1.8390$ is a light color, and the websafe version is hex FFCCCC . A complement of this color would be $189.4780, -24.7130, 1.8390$, and the grayscale version is $198.0000, -0.0000, 0.0000$.

A 20% lighter version of the original color is $247.1290, 12.5180, -6.6020$, and $143.7390, 22.6040, -2.1640$ is the 20% darker color. If you saturate the color by 10%, you get $187.9700, 35.0750, -2.4050$, and if you desaturate by 10%, it is $207.0740, 14.3510, -1.2730$.

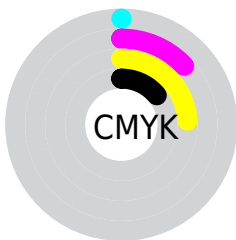
Distribution



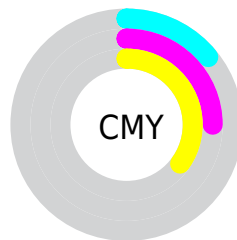
- Red (86%)
- Green (75%)
- Blue (65%)



- Red (86%)
- Yellow (84%)
- Blue (65%)



- Cyan (0%)
- Magenta (13%)
- Yellow (24%)
- Black (14%)



- Cyan (14%)
- Magenta (25%)
- Yellow (35%)

Brightness & Saturation Gradients

These gradients show how the YIQ color 197.5220, 24.7130, -1.8390 changes by changing the brightness by 10 percent. The first figure shows a shift by +10% for each color and the second figure -10%.

Similar to the brightness gradients but the following saturation gradients show a change of the YIQ color 197.5220, 24.7130, -1.8390 by changing the saturation by 10% instead.

■ 197.5220, 24.7130,
-1.8390

■ 197.5220, 24.7130,
-1.8390

■ 255.0000, -0.0000,
-0.0000

■ 170.3370, 23.7960,
-1.7400

■ 247.1290, 12.5180,
-6.6020

■ 143.7390, 22.6040,
-2.1640

■ 254.5440, 1.2840,
-1.2440

■ 117.8530, 22.2830,
-1.8530

■ 93.3690, 20.7700,
-1.9660

■ 69.1840, 19.8530,
-1.8670

■ 46.5150, 17.4230,
-1.8810

■ 25.7600, 18.1110,

-3.3370

■ 2.9900, 5.9600,
2.1200

■ 0.0000, 0.0000,
0.0000

■ 197.5220, 24.7130,
-1.8390

■ 197.5220, 24.7130,
-1.8390

■ 187.9700, 35.0750,
-2.4050

■ 207.0740, 14.3510,
-1.2730

■ 179.0050, 45.1620,
-3.4940

■ 216.0390, 4.2640,
-0.1840

■ 169.4530, 55.5240,
-4.0600

■ 225.5910, -6.0980,
0.3820

■ 159.9010, 65.8860,
-4.6260

■ 235.1430,
-16.4600, 0.9480

■ 150.9360, 75.9730,
-5.7150

■ 241.6000,
-19.4850, -4.8050

■ 141.3840, 86.3350,
-6.2810

■ 244.5350,
-20.8600, -7.4200

■ 132.4190, 96.4220,
-7.3700

■ 126.8280,
102.5200, -7.7520

Harmonies

Analogous

The Analogous color harmony consists of three colors that are next to each other on the color wheel.



199.0050, 27.9670, 5.2710



197.5220, 24.7130, -1.8390



195.4450, 14.4440, -8.4680

Triad

The Triadic color harmony groups three colors that are evenly spaced from another and form a triangle on the color wheel.



197.5220, 24.7130, -1.8390



190.7790, -27.5990, -11.9430



199.0190, -1.0110, 12.8210

Complementary

The Complementary color scheme is a pair of colors which are on the opposite of each other on the color wheel.



197.5220, 24.7130, -1.8390



189.4780, -24.7130, 1.8390

Split Complementary

Split-complementary colors differ from the complementary color scheme. The scheme consists of three colors, the original color and two neighbors of the complement color.



196.9460, -17.1030, 7.0970



197.5220, 24.7130, -1.8390



191.4180, -33.6520, -6.8680

Square

The Square scheme is like the rectangle color scheme, but the four colors are evenly spaced on the color wheel.



197.5220, 24.7130, -1.8390



191.9560, -15.0360, -13.8520



194.0860, -29.4810, 0.1430



199.9730, 13.7980, 14.2620

Rectangle

The Rectangle color scheme consists of four colors that form a rectangle on the color wheel.



197.5220, 24.7130, -1.8390



194.5470, 5.2290, -12.1710



194.0860, -29.4810, 0.1430



198.4420, -6.6960, 11.2240

Sweetspot

The Sweet Spot groups the original color and five complimentary colors.



197.5220, 24.7130, -1.8390



247.6650, 8.2530, -0.8910



186.0390, 22.6000, 19.9440



123.2240, 5.1810, -0.2830



0.0000, 0.0000, 0.0000



128.0000, -0.0000, -0.0000

Same Dimension

The Same Dimension uses a secret algorithm to generate beautiful new colors.



197.5220, 24.7130, -1.8390



223.6710, 34.4790, -2.6170



212.7840, 17.5630, -15.4370



105.2240, 5.1810, -0.2830



99.8610, 80.5580, -6.2100



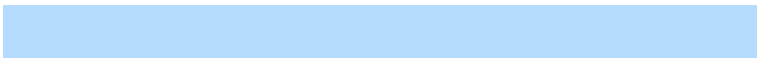
26.6680, 21.3660, -1.7540

Inverse Universe

The Inverse Universe completely reimagines the original color for something new.



189.4780, -24.7130, 1.8390



212.3290, -34.4790, 2.6170



174.2160, -17.5630, 15.4370



103.1890, -4.9060, 0.8060



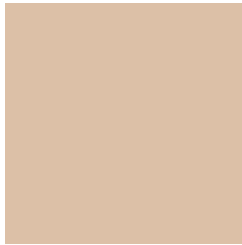
73.7260, -80.8330, 5.6870



19.3320, -21.3660, 1.7540

Previews

White Background



This preview shows how the YIQ color 197.5220, 24.7130, -1.8390 looks on a white background.

Color Contrast Check

Large Text (above 18pt) WCAG AA × Fail

Any Text WCAG AA × Fail

Large Text (above 18pt) WCAG AAA × Fail

Any Text WCAG AAA × Fail

Black Background



This preview shows how the YIQ color 197.5220, 24.7130, -1.8390 looks on a black background.

Color Contrast Check

Large Text (above 18pt) WCAG AA ✓ Pass

Any Text WCAG AA ✓ Pass

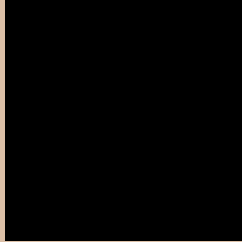
Large Text (above 18pt) WCAG AAA ✓ Pass

Any Text WCAG AAA ✓ Pass

If you want to check with other color combinations, try the [Color Contrast Checker](#).

YIQ 197.5220, 24.7130, -1.8390

Background



This preview shows how black text looks on a background with the YIQ color 197.5220, 24.7130, -1.8390.



This preview shows how white text looks on a background with the YIQ color 197.5220, 24.7130,

-1.8390.

Color Blindness Simulation

Color vision deficiency is a very complex topic, and I could not describe the different causes any better than Wikipedia does, so if you want to learn more, you should check out their [article about color blindness](#).

Dichromacy



Original Color

197.5220, 24.7130, -1.8390

Protanopia

196.2110, 15.2230, -6.0650

Deuteranopia

198.2560, 28.5180, 0.7900



Tritanopia

199.7730, 17.2370, 12.5090

Trichromacy



Original Color

197.5220, 24.7130, -1.8390

Protanomaly

197.0050, 18.7990, -4.7930

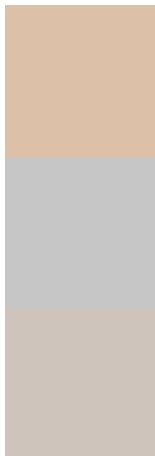
Deuteranomaly

198.2450, 27.0510, -0.1570

Tritanomaly

199.1660, 20.2640, 7.2080

Monochromacy



Original Color

197.5220, 24.7130, -1.8390

Achromatopsia

198.0000, -0.0000, 0.0000

Achromatomaly

197.9640, 8.8490, -0.6790

CSS Examples

Text

The CSS property to change the color of the text to YIQ 197.5220, 24.7130, -1.8390 is called "color". The color property can be set on classes, ids or directly on the HTML element.

This example shows how text in the color `rgb(220, 192, 167)` looks like.

```
.text, #text, p{  
    color:rgb(220, 192, 167)  
}
```

If you want to add a text shadow in that color use the text-shadow property, you can generate a text shadow directly with our [CSS Text Shadow Generator](#).

Here you see how black text with a 4 pixel rgb(220, 192, 167) colored shadow looks like.

```
.shadow{ text-shadow: 4px 4px 2px rgb(220, 192, 167) }
```

Border

The CSS property to change the border of an element to YIQ 197.5220, 24.7130, -1.8390 is called "border". The border property can be set on classes, ids or directly on the HTML element.

This example shows the color as border, it can be applied via the CSS property "border" or "border-color".

```
.border, #border, table{ border:4px solid rgb(220, 192, 167) }
```


If only the border color should be changed use the property border-color.

```
.border{ border-color:rgb(220, 192, 167) }
```

If you want to add a box shadow in that color use:

Here you see how a box with a 4 pixel rgb(220, 192, 167) colored shadow looks like.

```
.boxshadow{ -moz-box-shadow:4px 4px 4px  
4px rgb(220, 192, 167); -webkit-box-  
shadow:4px 4px 4px 4px rgb(220, 192, 167);  
box-shadow:4px 4px 4px 4px rgb(220, 192,  
167) }
```

Background

The CSS property to change the background color of an element to YIQ 197.5220, 24.7130, -1.8390 is called "background". The background property can be set on classes, ids or directly on the HTML element.

```
.background, #background, body{  
background: rgb(220, 192, 167) }
```

If only the background color should be changed can be used:

```
.background{ background-color: rgb(220,  
192, 167) }
```

This example shows the color as background, it is applied via the CSS property "background".

To optimize and compress your CSS code, you can use our [online CSS compressor and optimizer](#) based on csstidy. If you want to create a linear or radial gradient as background or border, check our [CSS Gradient Generator](#).

Hey! You found this booklet interesting? Support Converting Colors with the new Membership Option!

The pro membership hides all ads, plus gives you double the colors in the color bucket, and more awesome pro features!

[Learn more, Memberships starting at \\$2.50/m!](#)

**Follow me
on Twitter!**

@ConvertingColor