

# Converting Colors

YIQ(198.0270, 30.9010, 7.1650)

Have a look what the booklet for  
YIQ(198.0270, 30.9010, 7.1650)  
contains.

<b>YIQ(198.0270, 30.9010, 7.1650)</b> .....	3
<b><i>Conversions</i></b> .....	4
<b><i>Details</i></b> .....	6
<b><i>Harmonies</i></b> .....	12
<b><i>Previews</i></b> .....	24
<b><i>Color Blindness Simulation</i></b> .....	28
<b><i>CSS Examples</i></b> .....	31

# Color

**YIQ(198.0270, 30.9010,  
7.1650)**

# Conversions

## Conversions Part 1

Format	Color
Hex	E8B9B0
RGB	232, 185, 176
RGB Percent	91%, 73%, 69%
CMY	0.0901, 0.2746, 0.3097
CMYK	0.00, 0.20, 0.24, 0.09
HSL	10°, 55%, 80%
HSV	10°, 24%, 91%
XYZ	58.4721, 54.9859, 48.6230
YIQ	198.0270, 30.9010, 7.1650

# Conversions

## Conversions Part 2

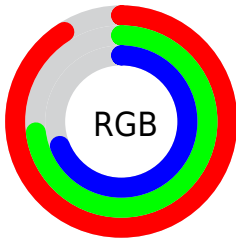
Format	Color
R <sub>Y</sub> B	232, 187, 176
Decimal	15251888
CIE Lab	79.03, 15.62, 10.98
CIE LCh	79, 19.093, 35.104
Yxy	54.9859, 0.3608, 0.3392
Android (android.graphics.Color)	4293441968 (0xFFE8B9B0)
YUV	198.0270, -10.8593, 29.7943
Hunter-Lab	74.1525, 10.9873, 13.0293

# Details

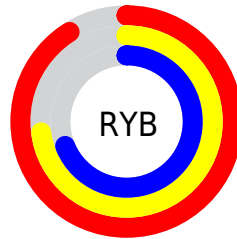
The YIQ color **198.0270, 30.9010, 7.1650** is a light color, and the websafe version is hex **FFCCCC**. A complement of this color would be **209.9730, -30.9010, -7.1650**, and the grayscale version is **198.0000, -0.0000, 0.0000**.

A 20% lighter version of the original color is **244.1600, 11.2330, 0.1690**, and **144.2440, 28.7920, 6.8400** is the 20% darker color. If you saturate the color by 10%, you get **183.6650, 43.7840, 10.4720**, and if you desaturate by 10%, it is **211.8020, 18.2930, 4.3810**.

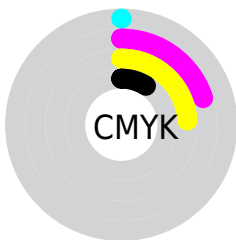
# Distribution



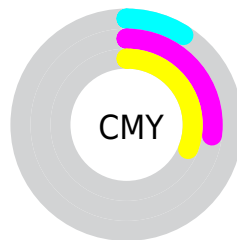
- Red (91%)
- Green (73%)
- Blue (69%)



- Red (91%)
- Yellow (73%)
- Blue (69%)



- Cyan (0%)
- Magenta (20%)
- Yellow (24%)
- Black (9%)




- Cyan (9%)
- Magenta (27%)
- Yellow (31%)


# Brightness & Saturation Gradients

These gradients show how the YIQ color 198.0270, 30.9010, 7.1650 changes by changing the brightness by 10 percent. The first figure shows a shift by +10% for each color and the second figure -10%.


Similar to the brightness gradients but the following saturation gradients show a change of the YIQ color 198.0270, 30.9010, 7.1650 by changing the saturation by 10% instead.





 198.0270, 30.9010,  
7.1650


 198.0270, 30.9010,  
7.1650


255.0000, -0.0000,  
-0.0000


 170.4290, 29.7090,  
6.7410


 244.1600, 11.2330,  
0.1690

 144.2440, 28.7920,  
6.8400

 117.7600, 27.2790,  
6.7270

 93.1620, 26.0870,  
6.3030

 69.2650, 24.2990,  
5.6670

 46.4820, 22.1900,  
5.3420

 24.5420, 21.9610,

3.9850

■ 7.2900, 13.9830,  
5.3990

■ 0.0000, 0.0000,  
0.0000

■ 198.0270, 30.9010,  
7.1650

■ 198.0270, 30.9010,  
7.1650

■ 183.6650, 43.7840,  
10.4720

■ 211.8020, 18.2930,  
4.3810

■ 169.8900, 56.3920,  
13.2560

■ 226.1640, 5.4100,  
1.0740

■ 156.0010, 69.3210,  
15.7290

■ 240.0530, -7.5190,  
-1.3990

■ 141.6390, 82.2040,  
19.0360

■ 248.1230,  
-13.7080, -4.8760

■ 127.8640, 94.8120,  
21.8200

■ 113.5020,  
107.6950, 25.1270

■ 99.7270, 120.3030,  
27.9110

■ 91.0870, 128.0970,  
29.8330

# Harmonies

## Analogous

The Analogous color harmony consists of three colors that are next to each other on the color wheel.



198.7910, 25.9940, 13.4980



198.0270, 30.9010, 7.1650



196.9030, 28.0140, -1.0900

# Triad

The Triadic color harmony groups three colors that are evenly spaced from another and form a triangle on the color wheel.



198.0270, 30.9010, 7.1650



190.7880, -14.6230, -15.8310



195.2060, -20.7710, 7.4930

# Complementary

The Complementary color scheme is a pair of colors which are on the opposite of each other on the color wheel.



198.0270, 30.9010, 7.1650



209.9730, -30.9010, -7.1650

# Split Complementary

Split-complementary colors differ from the complementary color scheme. The scheme consists of three colors, the original color and two neighbors of the complement color.



191.9930, -33.6530, -1.3410



198.0270, 30.9010, 7.1650



188.9420, -29.6160, -13.9360

# Square

The Square scheme is like the rectangle color scheme, but the four colors are evenly spaced on the color wheel.



198.0270, 30.9010, 7.1650



192.8240, 2.8910, -13.8530



189.3960, -36.5860, -8.7620



197.8770, -3.4870, 13.6410



# Rectangle

The Rectangle color scheme consists of four colors that form a rectangle on the color wheel.



198.0270, 30.9010, 7.1650



195.3320, 22.1920, -5.7120



189.3960, -36.5860, -8.7620



193.9880, -26.0890, 4.7510

# Sweetspot

The Sweet Spot groups the original color and five complimentary colors.



198.0270, 30.9010, 7.1650



244.1430, 9.9030, 2.2470



198.2160, 17.9680, 26.8000



121.4630, 6.0060, 1.2860



0.0000, 0.0000, 0.0000



128.0000, -0.0000, -0.0000



# Same Dimension

The Same Dimension uses a secret algorithm to generate beautiful new colors.



198.0270, 30.9010, 7.1650



210.1700, 40.8040, 9.4120



213.8760, 23.4760, -6.9560



107.7620, 6.6020, 1.4980



70.5440, 98.7090, 22.7810



19.9450, 28.1960, 6.6280



# Inverse Universe

The Inverse Universe completely reimagines the original color for something new.



209.9730, -30.9010, -7.1650



225.8300, -40.8040, -9.4120



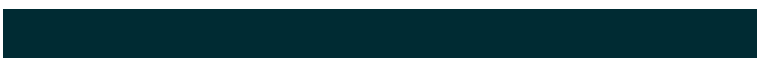
194.1240, -23.4760, 6.9560



110.2380, -6.6020, -1.4980



108.4560, -98.7090, -22.7810

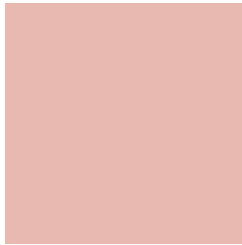


31.0550, -28.1960, -6.6280



# Previews

## White Background



This preview shows how the YIQ color 198.0270, 30.9010, 7.1650 looks on a white background.

## Color Contrast Check

Large Text (above 18pt) WCAG AA × Fail

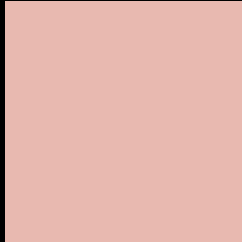
Any Text WCAG AA × Fail

Large Text (above 18pt) WCAG AAA × Fail

Any Text WCAG AAA × Fail



# Black Background



This preview shows how the YIQ color 198.0270, 30.9010, 7.1650 looks on a black background.

## Color Contrast Check

Large Text (above 18pt) WCAG AA ✓ Pass

Any Text WCAG AA ✓ Pass

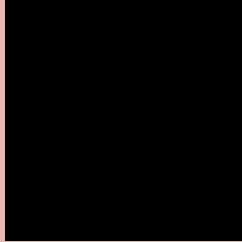
Large Text (above 18pt) WCAG AAA ✓ Pass

Any Text WCAG AAA ✓ Pass

If you want to check with other color combinations, try the [Color Contrast Checker](#).

# YIQ 198.0270, 30.9010, 7.1650

## Background



This preview shows how black text looks on a background with the YIQ color 198.0270, 30.9010, 7.1650.



This preview shows how white text looks on a background with the YIQ color 198.0270, 30.9010,

7.1650.

# Color Blindness Simulation

Color vision deficiency is a very complex topic, and I could not describe the different causes any better than Wikipedia does, so if you want to learn more, you should check out their [article about color blindness](#).

## Dichromacy



### Original Color

198.0270, 30.9010, 7.1650

### Protanopia

195.7960, 9.2620, -2.6580

### Deuteranopia

197.2710, 24.1620, 2.6420



## Tritanopia

199.1440, 26.4980, 15.3780

# Trichromacy



## Original Color

198.0270, 30.9010, 7.1650

## Protanomaly

196.5090, 17.5600, 1.1440

## Deuteranomaly

197.8800, 26.8210, 4.0130

## Tritanomaly

198.6340, 27.8740, 12.4660

# Monochromacy



## Original Color

198.0270, 30.9010, 7.1650

## Achromatopsia

198.0000, -0.0000, 0.0000

## Achromatomaly

197.7410, 11.0950, 2.6710

# CSS Examples

## Text

The CSS property to change the color of the text to YIQ 198.0270, 30.9010, 7.1650 is called "color". The color property can be set on classes, ids or directly on the HTML element.

This example shows how text in the color `rgb(232, 185, 176)` looks like.

```
.text, #text, p{  
    color:rgb(232, 185, 176)  
}
```

If you want to add a text shadow in that color use the text-shadow property, you can generate a text shadow directly with our [CSS Text Shadow Generator](#).

Here you see how black text with a 4 pixel rgb(232, 185, 176) colored shadow looks like.

```
.shadow{ text-shadow: 4px 4px 2px rgb(232, 185, 176) }
```

## Border

The CSS property to change the border of an element to YIQ 198.0270, 30.9010, 7.1650 is called "border". The border property can be set on classes, ids or directly on the HTML element.

This example shows the color as border, it can be applied via the CSS property "border" or "border-color".

```
.border, #border, table{ border:4px solid rgb(232, 185, 176) }
```



If only the border color should be changed use the property `border-color`.

```
.border{ border-color:rgb(232, 185, 176) }
```

If you want to add a box shadow in that color use:

Here you see how a box with a 4 pixel `rgb(232, 185, 176)` colored shadow looks like.

```
.boxshadow{ -moz-box-shadow:4px 4px 4px  
4px rgb(232, 185, 176); -webkit-box-  
shadow:4px 4px 4px 4px rgb(232, 185, 176);  
box-shadow:4px 4px 4px 4px rgb(232, 185,  
176) }
```

# Background

The CSS property to change the background color of an element to YIQ 198.0270, 30.9010, 7.1650 is called "background". The background property can be set on classes, ids or directly on the HTML element.

```
.background, #background, body{  
background: rgb(232, 185, 176) }
```

If only the background color should be changed can be used:

```
.background{ background-color: rgb(232,  
185, 176) }
```

This example shows the color as background, it is applied via the CSS property "background".

To optimize and compress your CSS code, you can use our [online CSS compressor and optimizer](#) based on csstidy. If you want to create a linear or radial gradient as background or border, check our [CSS Gradient Generator](#).

Hey! You found this booklet interesting? Support Converting Colors with the new Membership Option!

The pro membership hides all ads, plus gives you double the colors in the color bucket, and more awesome pro features!

**[Learn more, Memberships starting at \\$2.50/m!](#)**

**Follow me  
on Twitter!**

@ConvertingColor